

1108 ABBOT KINNEY RETAIL FOR LEASE

LAST REMAINING
SPACE AVAILABLE



CARINE MAMANN
Executive Director | Lic. 01734150
carine.mamann@cushwake.com
T. 310 595 2235

KAZUKO Y. MORGAN
Executive Vice Chairman | Lic. 01070005
kazuko.morgan@cushwake.com
T. 415 773 3546

BRANDON COHAN
Founder | Lic. 01903949
brandon@bcrc.la
T. 310 654 0200

BC BRANDON COHAN
REAL ESTATE // BCRC.LA

CUSHMAN & WAKEFIELD



THE OFFERING

THE ABBOT KINNEY SPACES SIT COURTSIDE ON THE MOST DESIRABLE STREET IN THE WORLD, SURROUNDED BY THE MOST DISTINGUISHED & WELL-KNOWN RESTAURANTS & EATERIES IN LOS ANGELES.

GQ Magazine named Abbot Kinney the coolest block in America. Located in the heart of Venice on the hard corner of California Avenue, this rare opportunity in the city's most expensive zip code faces the only stop light on all of Abbot Kinney Boulevard, making it the hottest property on the market today.

1108 ABBOT KINNEY BOULEVARD

Ground
± 1,175 SF

+

Mezzanine
± 349 SF

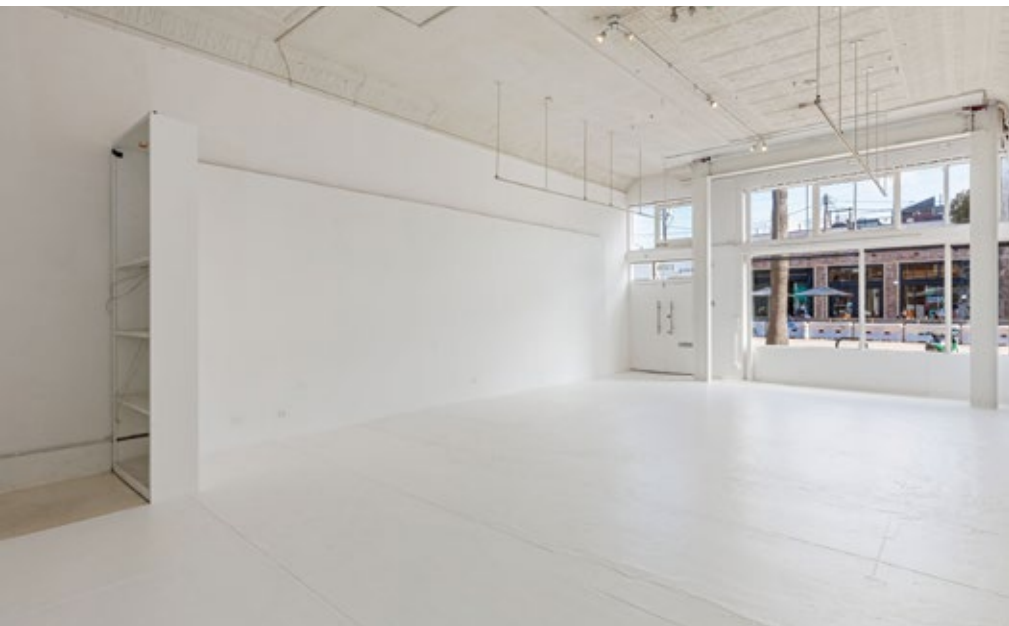
=

TOTAL AVAILABLE
± 1,534 SF

FRONTAGE
25'

CEILING HEIGHT
20' Clearance

PARKING
in Rear



1108 ABBOT KINNEY BOULEVARD

Ground
± 1,175 SF +

Mezzanine
± 349 SF =

TOTAL AVAILABLE
± 1,534 SF

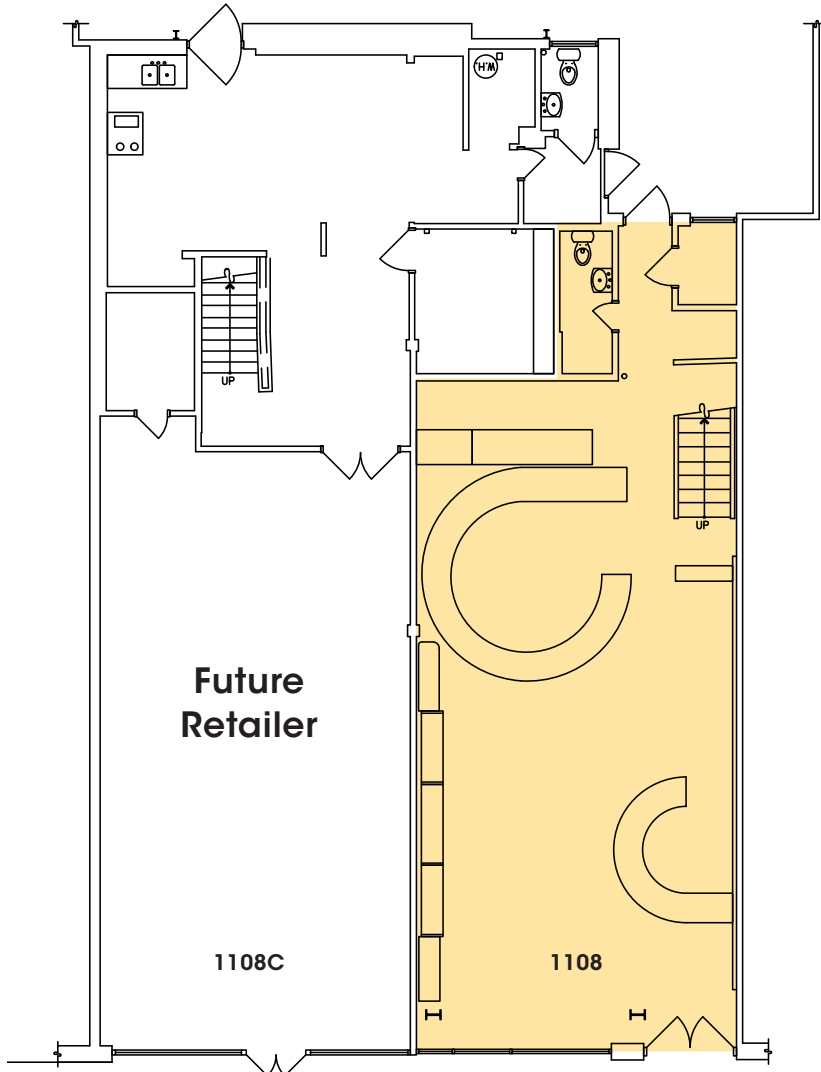
FRONTAGE
25'

CEILING HEIGHT
20' Clearance

PARKING
in Rear

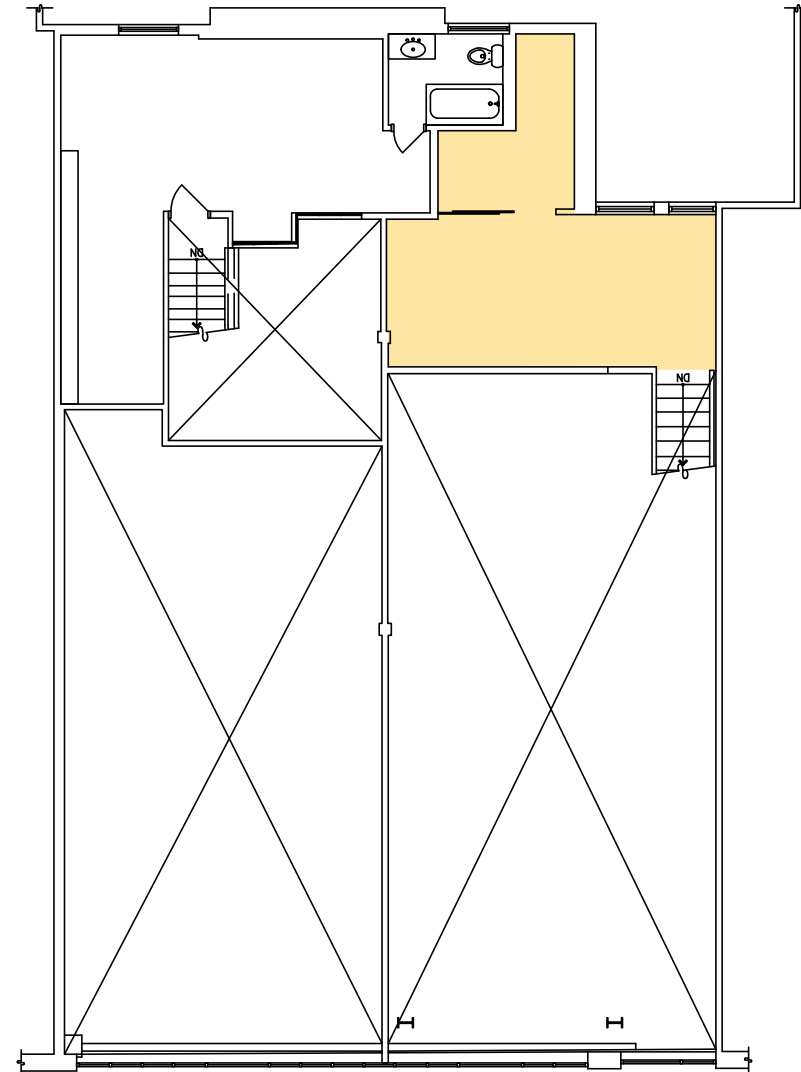
CAN BE COMBINED WITH 1108C FOR ±3,828 SF

GROUND



ABBOT KINNEY BOULEVARD

MEZZANINE



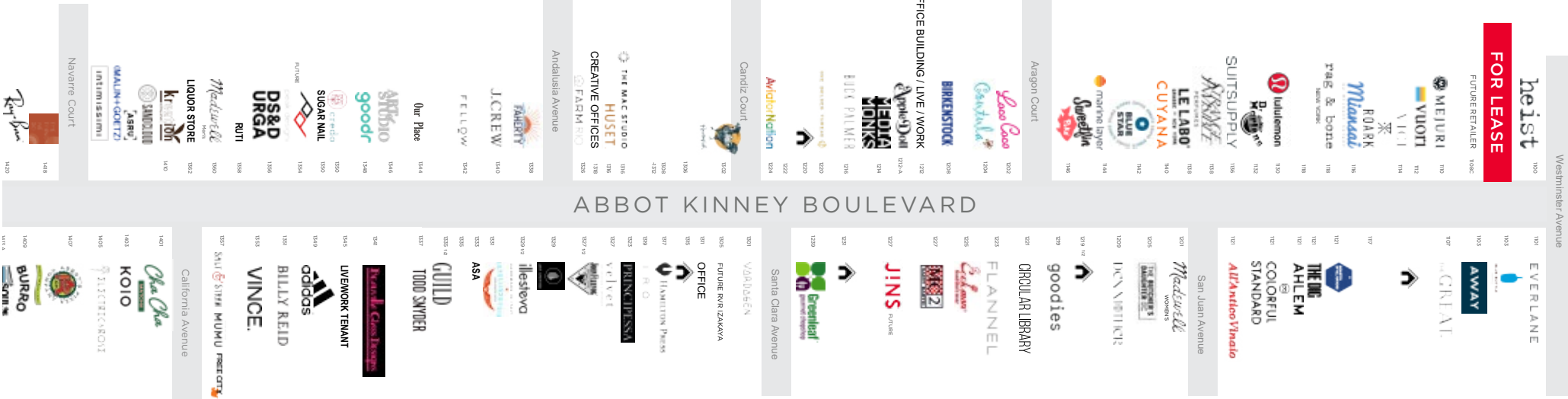
ABBOT KINNEY BOULEVARD

LOCATION



- Heist
- Mejuri, Vuori, Vici
- Roark, Miansai
- Rag & Bone
- De Buena Planta
- Lululemon
- Dr. Martens
- Suitsupply
- Strange Invisible
- Le Labo
- Cuyana
- Blue Star Donuts
- Marine Layer
- Sweetfin Poke
- Loco Coco
- Coutula
- Birkenstock
- Office / Live / Work
- Apple Doll
- Build Group
- Media Monks LA
- Everlane
- Blue Bottle Coffee
- AWAY
- The Great
- Industry of All Nations
- General Admission
- AHLEM, Mod Ref
- All' Antico Vinaio
- Madewell
- The Butcher's Daughter
- Den Mother
- Goodies
- Circular Library
- Flannel
- Cookman
- MC2 Saint Barth

RETAIL STREET MAP



1108 ABBOT KINNEY RETAIL FOR LEASE



CARINE MAMANN
Executive Director | Lic. 01734150
carine.mamann@cushwake.com
T. 310 595 2235

KAZUKO Y. MORGAN
Executive Vice Chairman | Lic. 01070005
kazuko.morgan@cushwake.com
T. 415 773 3546

BRANDON COHAN
Founder | Lic. 01903949
brandon@bcrc.la
T. 310 654 0200

BRANDON COHAN
REAL ESTATE // BCRC.LA

CUSHMAN & WAKEFIELD