

# Deerfield

# Corporate Park



602-852 South Military Trail, Deerfield Beach, FL 33442



**Flex Space  
Option**



**Prime  
Location**



**Separately  
Metered**



**Ample  
Parking**

**Greg Martin**

*Principal, Managing Director*  
(954) 903-1815

[greg.martin@avisonyoung.com](mailto:greg.martin@avisonyoung.com)

**Justin Cope, SIOR**

*Principal*  
(954) 903-3701

[justin.cope@avisonyoung.com](mailto:justin.cope@avisonyoung.com)

**Lisa Blumer, CCIM**

*Principal*  
(954) 903-3703

[lisa.blumer@avisonyoung.com](mailto:lisa.blumer@avisonyoung.com)

**AVISON  
YOUNG**



# Property



## Flex Space Option

Designed for light industrial use with layout versatility, including grade level roll up doors



## Separately Metered

Allowing for Tenant controlled AC hours



## Ample Parking

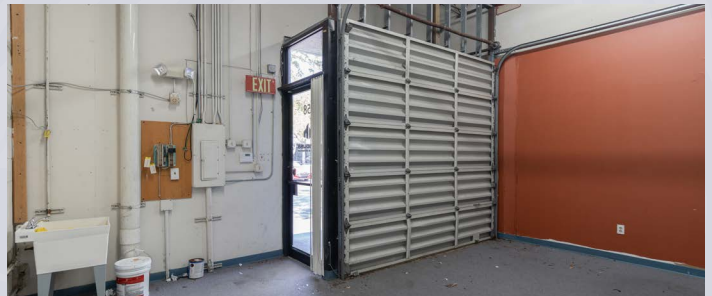
Generous parking ratio of 4.0 spaces per 1,000 square feet



## Prime Location

Located near I-95 and the Deerfield Beach Tri-Rail Station for easy commuting.

# Amenties



## Greg Martin

*Principal, Managing Director*

(954) 903-1815

[greg.martin@avisonyoung.com](mailto:greg.martin@avisonyoung.com)

## Justin Cope, SIOR

*Principal*

(954) 903-3701

[justin.cope@avisonyoung.com](mailto:justin.cope@avisonyoung.com)

## Lisa Blumer, CCIM

*Principal*

(954) 903-3703

[lisa.blumer@avisonyoung.com](mailto:lisa.blumer@avisonyoung.com)

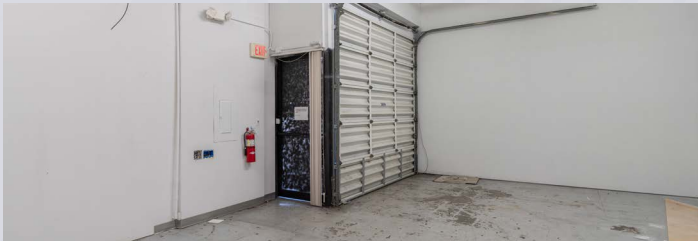
**AVISON  
YOUNG**





# Suites

## Photos



### Greg Martin

*Principal, Managing Director*  
(954) 903-1815

[greg.martin@avisonyoung.com](mailto:greg.martin@avisonyoung.com)

### Justin Cope, SIOR

*Principal*  
(954) 903-3701

[justin.cope@avisonyoung.com](mailto:justin.cope@avisonyoung.com)

### Lisa Blumer, CCIM

*Principal*  
(954) 903-3703

[lisa.blumer@avisonyoung.com](mailto:lisa.blumer@avisonyoung.com)

**AVISON  
YOUNG**





# Property

Rental  
Rate

**\$21.50** *psf NNN* | **\$8.64** *Opex psf*

## Availabilities

### BUILDING A

**Suite 612**  
**1,843 sf**

### BUILDING B

**Suite 784**  
**3,845 sf**

**\*Suite 786**  
**5,158 sf**

**Suite 796**  
**1,880 sf**

**Suite 832**  
**1,850 sf**

**Suite 834**  
**5,858 sf**

\*Available August 1, 2026

#### Greg Martin

Principal, Managing Director  
(954) 903-1815

[greg.martin@avisonyoung.com](mailto:greg.martin@avisonyoung.com)

#### Justin Cope, SIOR

Principal  
(954) 903-3701

[justin.cope@avisonyoung.com](mailto:justin.cope@avisonyoung.com)

#### Lisa Blumer, CCIM

Principal  
(954) 903-3703

[lisa.blumer@avisonyoung.com](mailto:lisa.blumer@avisonyoung.com)

**AVISON  
YOUNG**





# Suite

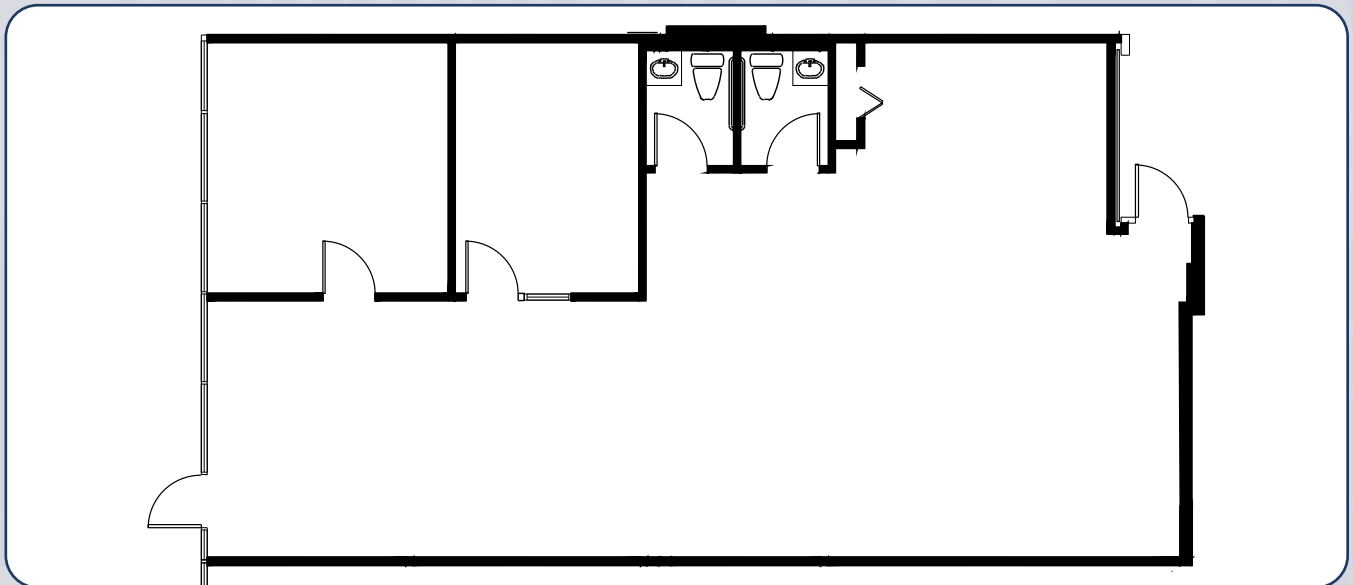


BUILDING A



1,843 SF

## 612



### Greg Martin

Principal, Managing Director  
(954) 903-1815

[greg.martin@avisonyoung.com](mailto:greg.martin@avisonyoung.com)

### Justin Cope, SIOR

Principal  
(954) 903-3701

[justin.cope@avisonyoung.com](mailto:justin.cope@avisonyoung.com)

### Lisa Blumer, CCIM

Principal  
(954) 903-3703

[lisa.blumer@avisonyoung.com](mailto:lisa.blumer@avisonyoung.com)

**AVISON  
YOUNG**





# Suite



**BUILDING B**

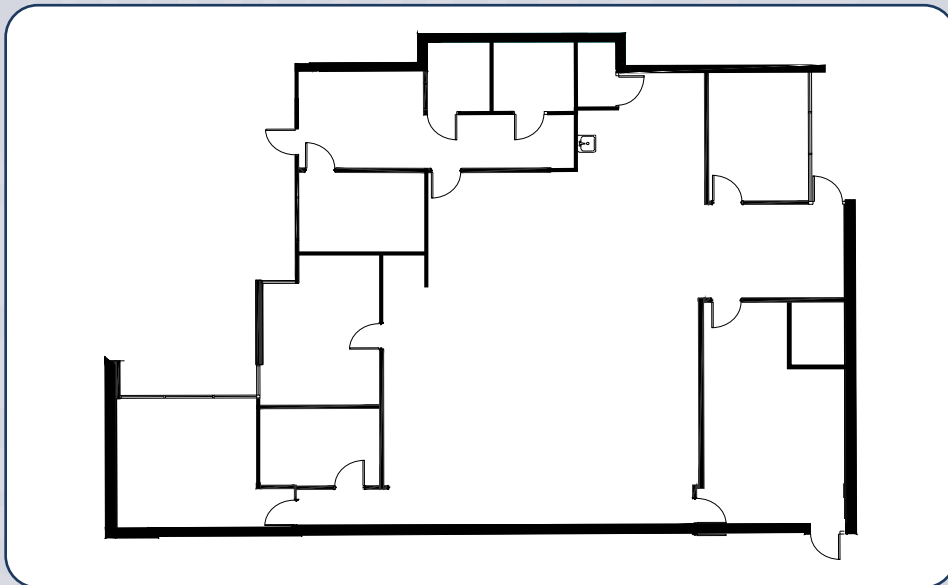


**3,845 SF**



**Office Space**

# 784



## Greg Martin

*Principal, Managing Director*

(954) 903-1815

[greg.martin@avisonyoung.com](mailto:greg.martin@avisonyoung.com)

## Justin Cope, SIOR

*Principal*

(954) 903-3701

[justin.cope@avisonyoung.com](mailto:justin.cope@avisonyoung.com)

## Lisa Blumer, CCIM

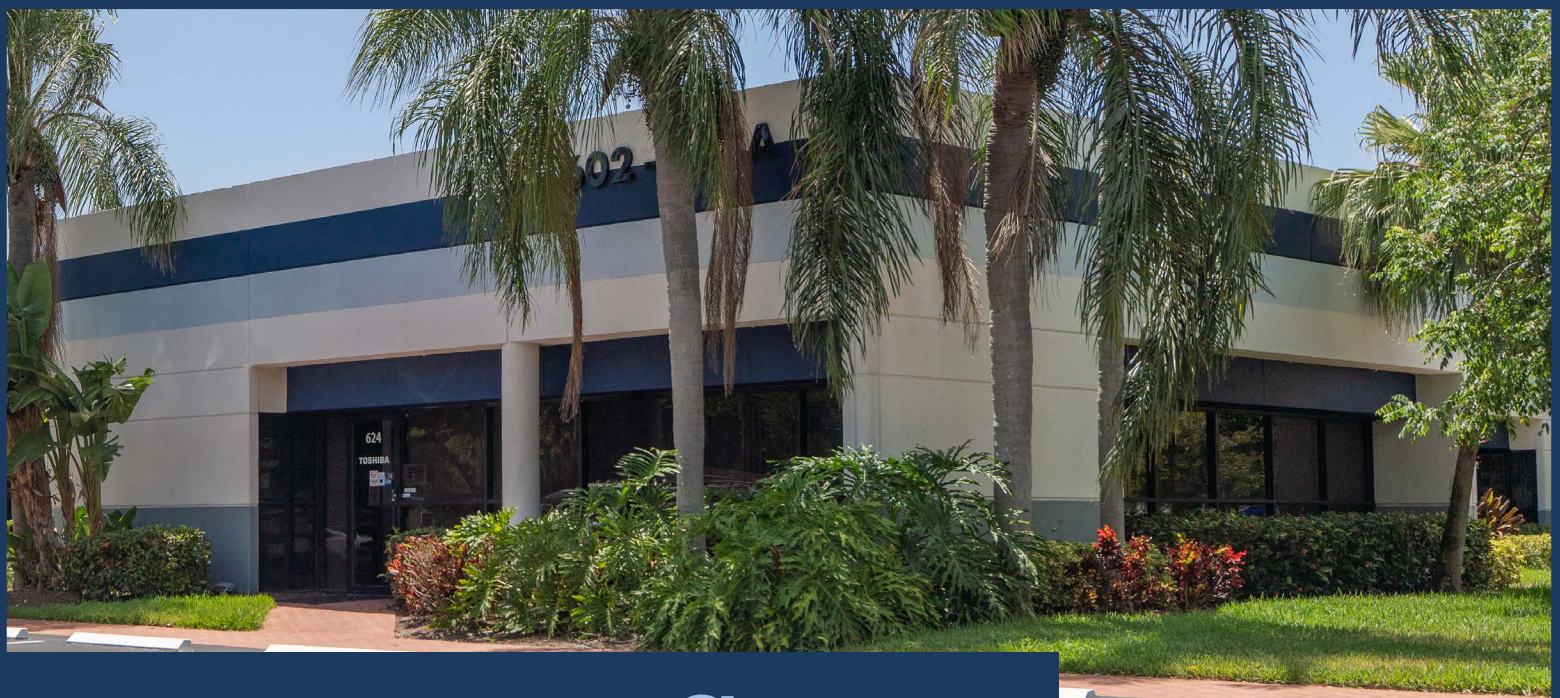
*Principal*

(954) 903-3703

[lisa.blumer@avisonyoung.com](mailto:lisa.blumer@avisonyoung.com)

**AVISON  
YOUNG**





# Suite



**BUILDING B**

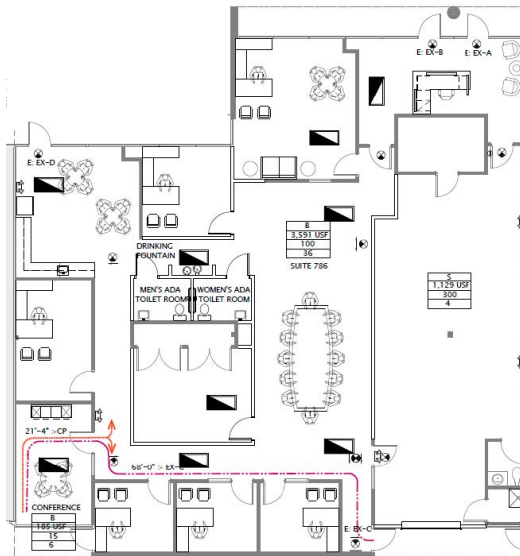


**5,158 SF**



**Flex Space**

# 786



Available August 1, 2026

## Greg Martin

*Principal, Managing Director*

(954) 903-1815

[greg.martin@avisonyoung.com](mailto:greg.martin@avisonyoung.com)

## Justin Cope, SIOR

*Principal*

(954) 903-3701

[justin.cope@avisonyoung.com](mailto:justin.cope@avisonyoung.com)

## Lisa Blumer, CCIM

*Principal*

(954) 903-3703

[lisa.blumer@avisonyoung.com](mailto:lisa.blumer@avisonyoung.com)

**AVISON  
YOUNG**





# Suite



**BUILDING B**

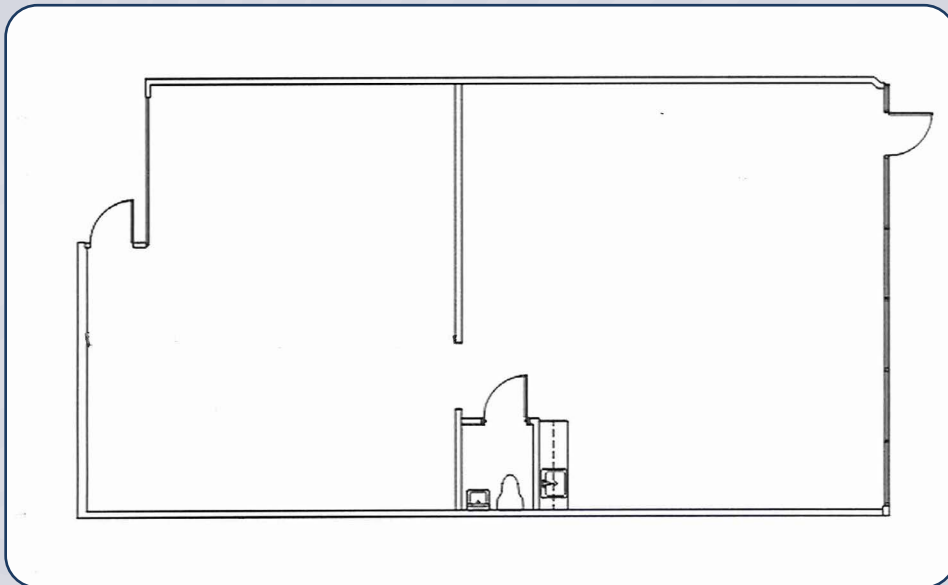


**1,880 SF**



**Flex Space**

# 796



## Greg Martin

*Principal, Managing Director*

(954) 903-1815

[greg.martin@avisonyoung.com](mailto:greg.martin@avisonyoung.com)

## Justin Cope, SIOR

*Principal*

(954) 903-3701

[justin.cope@avisonyoung.com](mailto:justin.cope@avisonyoung.com)

## Lisa Blumer, CCIM

*Principal*

(954) 903-3703

[lisa.blumer@avisonyoung.com](mailto:lisa.blumer@avisonyoung.com)

**AVISON  
YOUNG**





# Suite



**BUILDING B**

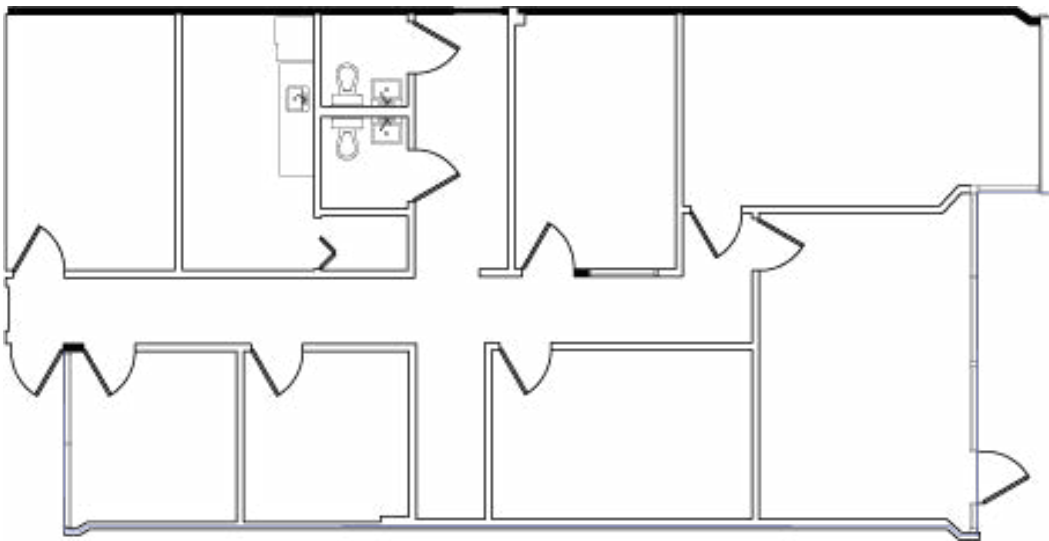


**1,850 SF**



**Office Space**

# 832



## Greg Martin

*Principal, Managing Director*

(954) 903-1815

[greg.martin@avisonyoung.com](mailto:greg.martin@avisonyoung.com)

## Justin Cope, SIOR

*Principal*

(954) 903-3701

[justin.cope@avisonyoung.com](mailto:justin.cope@avisonyoung.com)

## Lisa Blumer, CCIM

*Principal*

(954) 903-3703

[lisa.blumer@avisonyoung.com](mailto:lisa.blumer@avisonyoung.com)

**AVISON  
YOUNG**





# Suite



**BUILDING B**

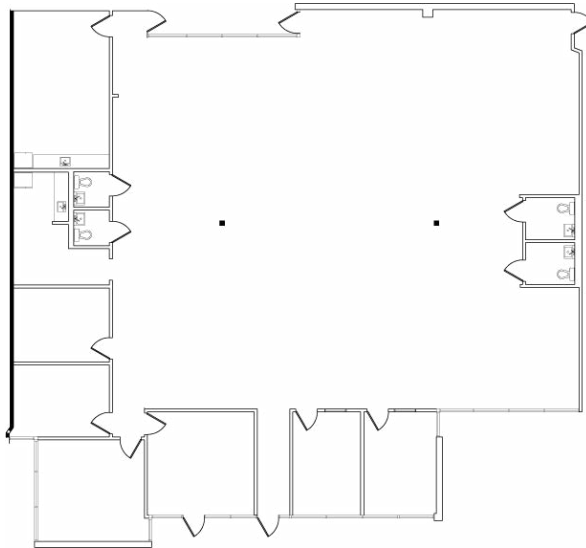


**5,858 SF**



**Office Space**

# 834



## Greg Martin

*Principal, Managing Director*

(954) 903-1815

[greg.martin@avisonyoung.com](mailto:greg.martin@avisonyoung.com)

## Justin Cope, SIOR

*Principal*

(954) 903-3701

[justin.cope@avisonyoung.com](mailto:justin.cope@avisonyoung.com)

## Lisa Blumer, CCIM

*Principal*

(954) 903-3703

[lisa.blumer@avisonyoung.com](mailto:lisa.blumer@avisonyoung.com)

**AVISON  
YOUNG**





# Property

# Location



## Restaurants

Dunkin'  
Parthenope Ristorante  
McDonald's

## Financials

Chase Bank  
Wells Fargo  
Truist  
Bank of America

## Miscellaneous

Publix  
Walmart  
BrandsMart USA

CVS  
The Home Depot  
La Quinta Inn & Suites

### Greg Martin

Principal, Managing Director  
(954) 903-1815

greg.martin@avisonyoung.com

### Justin Cope, SIOR

Principal  
(954) 903-3701

justin.cope@avisonyoung.com

### Lisa Blumer, CCIM

Principal  
(954) 903-3703

lisa.blumer@avisonyoung.com

**AVISON  
YOUNG**