

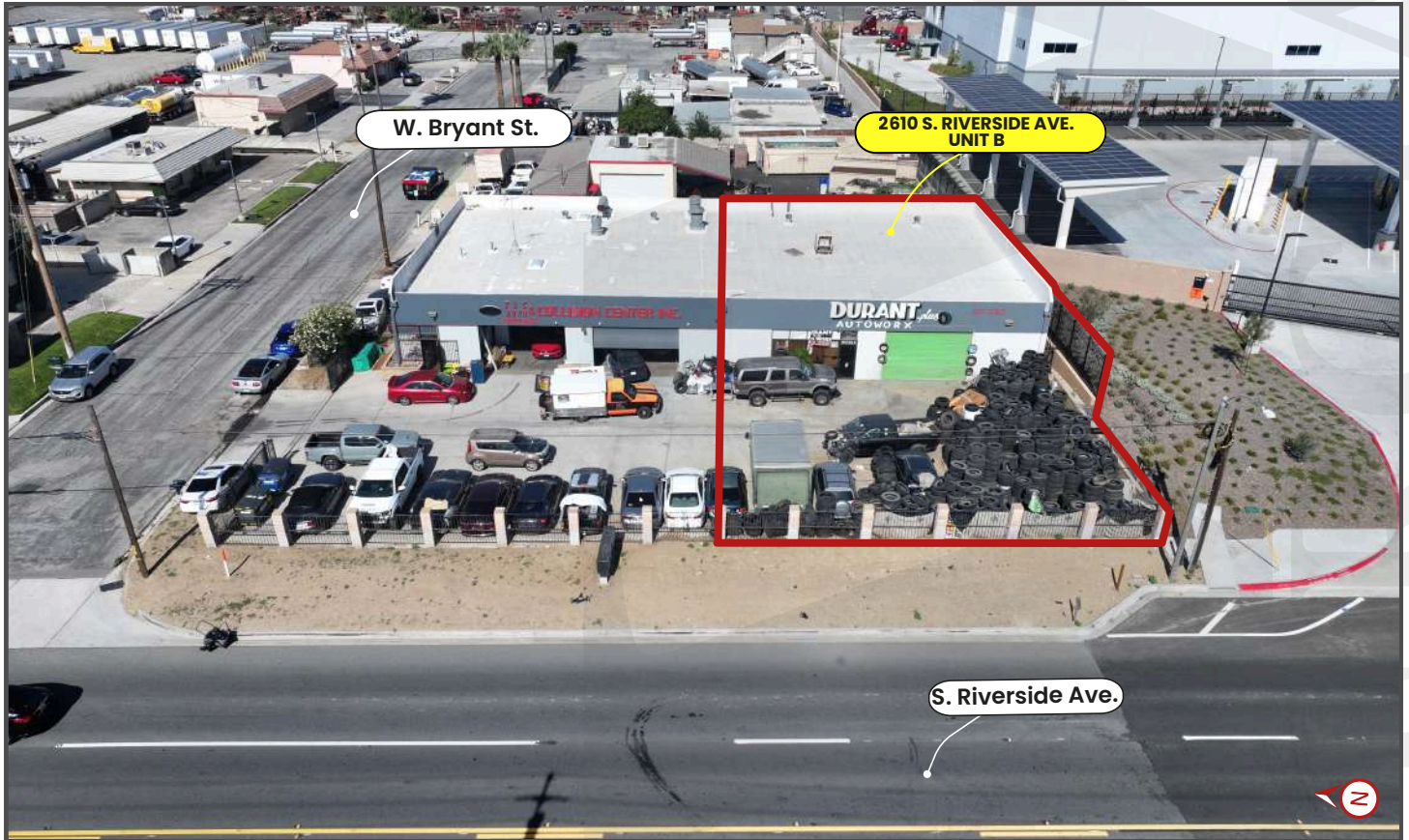
FOR LEASE



INLAND
EMPIRE

±3,200 SQ.FT. INDUSTRIAL UNIT

2610 S. RIVERSIDE AVE., BLOOMINGTON, CA 92316



PROPERTY FEATURES

Unit Size: ± 3,200 Sq.Ft

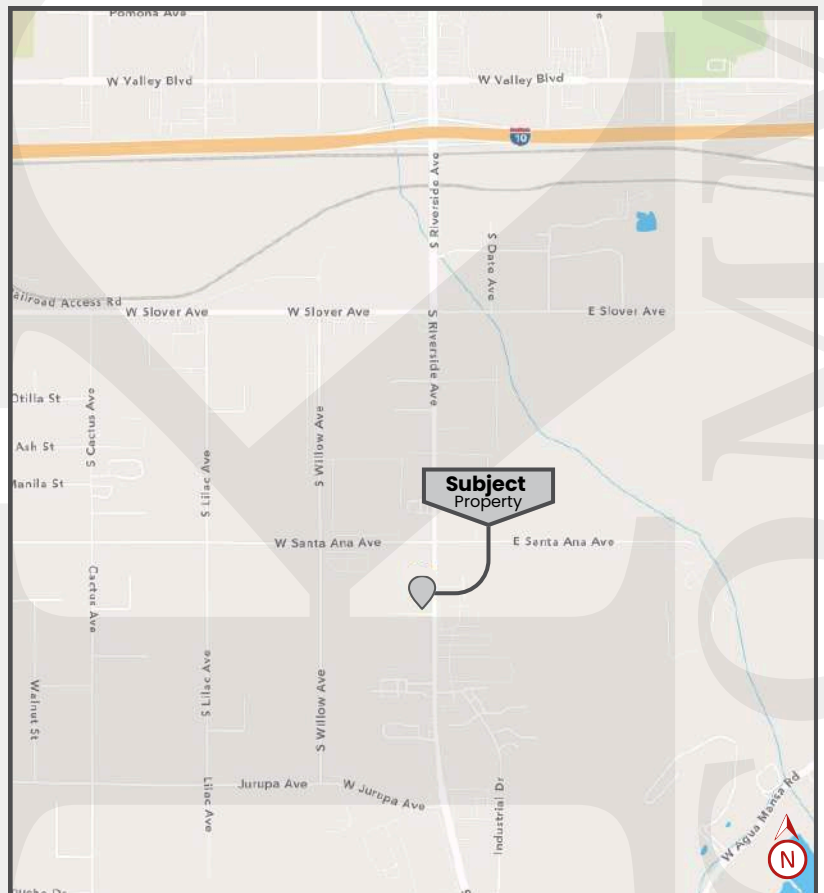
Lot Size: ± 20,570 Sq.Ft. (± 0.47 Acres)

APN: 0258-121-38-0000

Zoning: Agua Mansa Specific Plan (SP)
per the County of San Bernardino, CA

PROPERTY HIGHLIGHTS

- ±200 sq.ft. Office Space
- 1 Ground Level Door (14' x 10')
- 15' Clear Height
- 2 Restrooms
- Secured Parking
- Frontage on S. Riverside Ave.
(±24,000 VPD)
- Great Access to I-10 Freeway
from S. Riverside Ave. On/Off
Ramp



FOR LEASE

±3,200 SQ.FT. INDUSTRIAL UNIT

2610 S. RIVERSIDE AVE., BLOOMINGTON, CA 92316



INLAND
EMPIRE

ADDITIONAL PICTURES



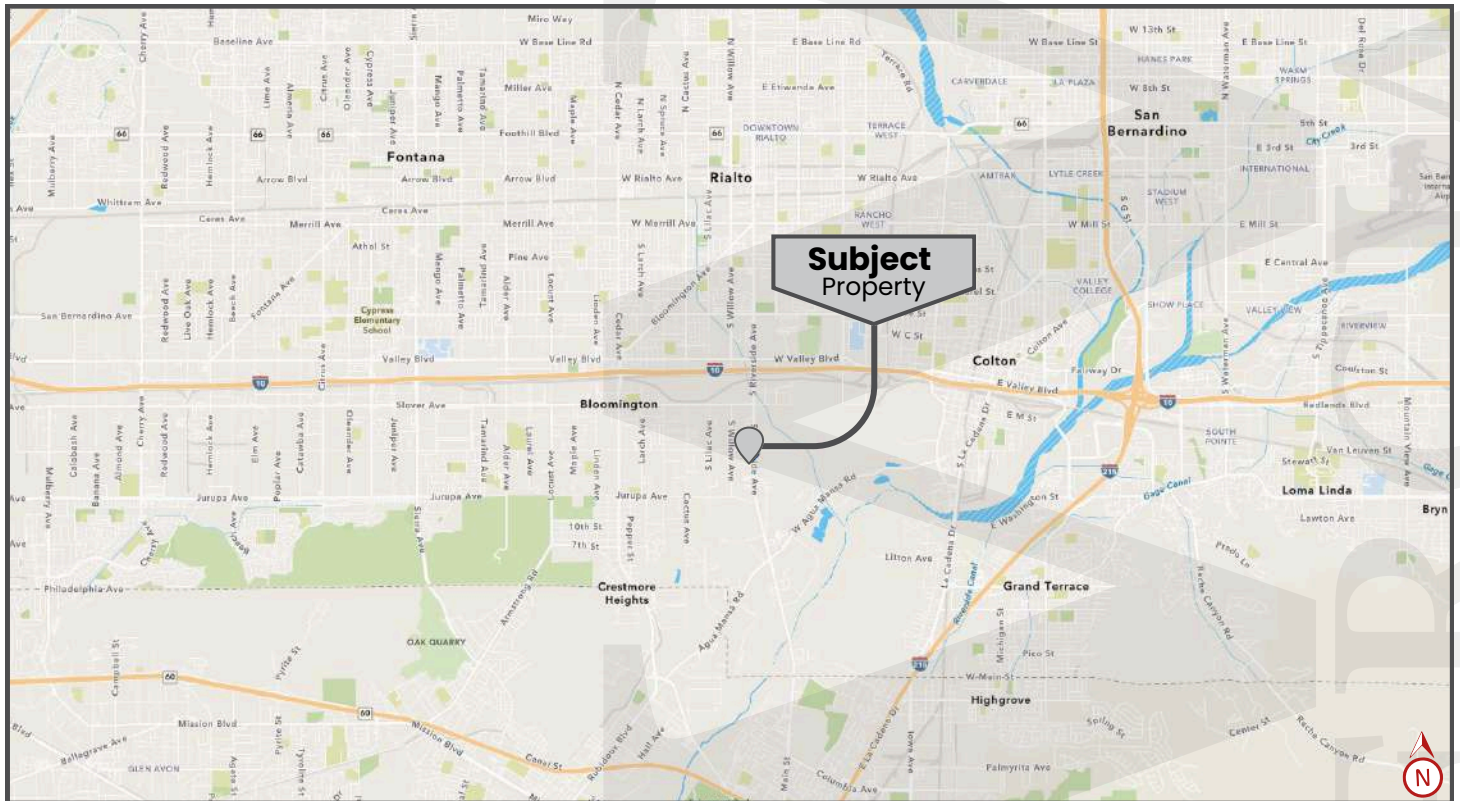
FOR LEASE

±3,200 SQ.FT. INDUSTRIAL UNIT

2610 S. RIVERSIDE AVE., BLOOMINGTON, CA 92316



**INLAND
EMPIRE**



Rene Ramos, Jr.
T(909) 980-6868
Rene.Ramos@kwcommercial.com
CaDRE Lic. #01836872

Jacob B. Bernardy
T(909) 935-0935
Jacob.Bernardy@kwcommercial.com
CaDRE Lic. #02039512

Robert D. Bagley III
T(909) 935-0938
robert.bagley@kwcommercial.com
CaDRE Lic. #02131874

Aidan J. Isaias
T(909) 935-0936
Aidan.Isaias@kwcie.com
CaDRE Lic. #02228061



WE OBTAINED THE INFORMATION ABOVE FROM SOURCES WE BELIEVE TO BE RELIABLE. HOWEVER, WE HAVE NOT VERIFIED ITS ACCURACY AND MAKE NO GUARANTEE, WARRANTY, OR REPRESENTATION ABOUT IT. IT IS SUBMITTED SUBJECT TO THE POSSIBILITY OF ERRORS, OMISSIONS, CHANGE OF PRICE, RENTAL OR OTHER CONDITIONS, PRIOR SALE, LEASE OR FINANCING, OR WITHDRAWAL WITHOUT NOTICE. WE INCLUDE PROJECTIONS, OPINIONS, ASSUMPTIONS OR ESTIMATES FOR EXAMPLE ONLY, AND THEY MAY NOT REPRESENT CURRENT OR FUTURE PERFORMANCE OF THE PROPERTY. YOU AND YOUR TAX AND LEGAL ADVISORS SHOULD CONDUCT YOUR OWN INVESTIGATION OF THE PROPERTY AND TRANSACTION.

KW COMMERCIAL- INLAND EMPIRE

3595-1 Inland Empire Blvd.

Suite 1250

Ontario, CA 91764

909.980.6868

www.kwcie.com