

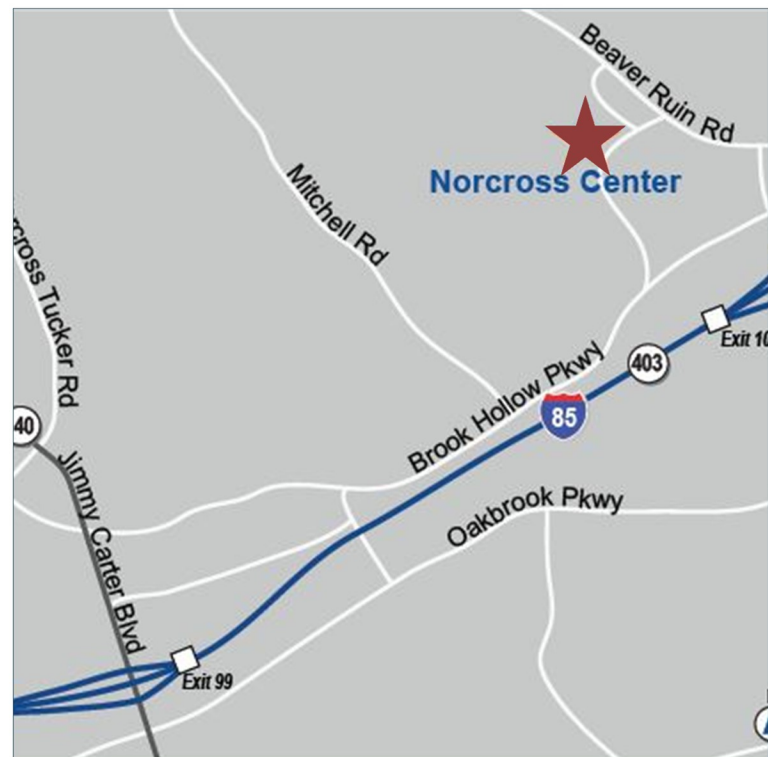
# FOR LEASE

**NORCROSS CENTER**  
2100-2200 NORCROSS PARKWAY  
NORCROSS, GA 30071



## PROPERTY INFORMATION

- 6,400 - 7,302 SF Available
- Proactive Ownership
- Move-in ready suites
- 20' minimum clear height
- LED lighting in warehouse
- Sprinklered
- Dock-High and Drive-In Loading
- Spacious Truck Courts
- Immediate access to I-85 and I-285
- Corporate Business Park Environment



**Hughes Commercial Real Estate, Inc.**  
8215 Roswell Road, Building 700  
Atlanta, GA 30350  
770-559-1099

**Matt Nelsen**  
404-431-0971  
matt@hughes-cre.com

Owned by:





# FOR LEASE

**NORCROSS CENTER**  
2100-2200 NORCROSS PARKWAY  
NORCROSS, GA 30071

## CURRENT AVAILABILITIES

Building	Suite	Available SF	Office SF	Clear Height	Dock Doors
2200 Norcross Parkway	200	6,984	±2,753	20'	1 DH, 1 DI
2200 Norcross Parkway	210	7,302	3,279	20'	1 DH, 1 DI
2200 Norcross Parkway	250	6,400	1,549	20'	1 DH

### 2100 Norcross Parkway



### 2200 Norcross Parkway



**Hughes Commercial Real Estate, Inc.**  
8215 Roswell Road, Building 700  
Atlanta, GA 30350  
770-559-1099

**Matt Nelsen**  
404-431-0971  
matt@hughes-cre.com

Owned by:



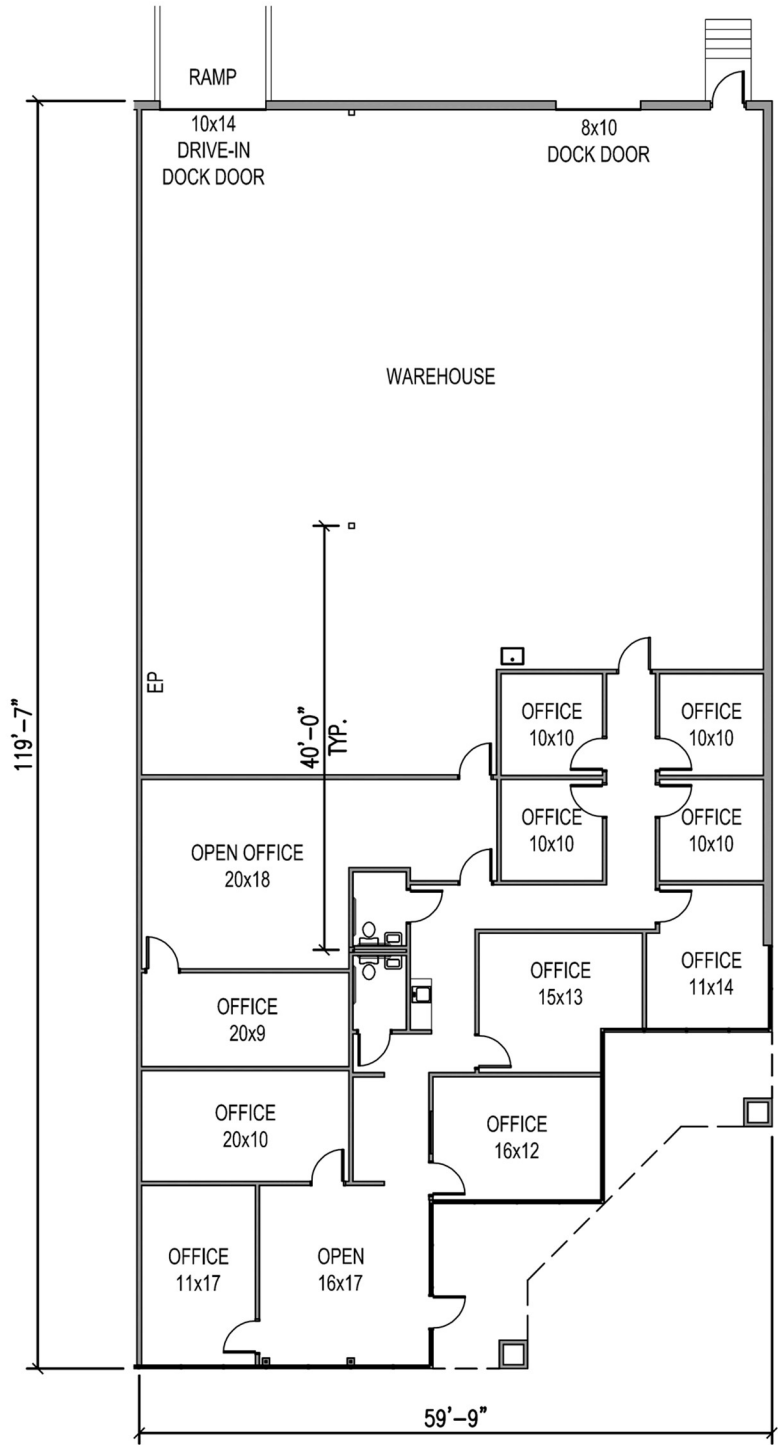
# FOR LEASE

**NORCROSS CENTER**  
2100-2200 NORCROSS PARKWAY  
NORCROSS, GA 30071

FLOOR PLAN | 2200 NORCROSS PARKWAY | SUITE 200 | 6,984 SF

## SUITE INFORMATION

6,984 SF Available  
±2,753 SF Office  
±4,231 SF Warehouse  
One (1) Dock High Door  
One (1) Drive In Door  
End Cap Suite



**Hughes Commercial Real Estate, Inc.**  
8215 Roswell Road, Building 700  
Atlanta, GA 30350  
770-559-1099

**Matt Nelsen**  
404-431-0971  
matt@hughes-cre.com

Owned by:  
**AGELLAN**  
COMMERCIAL REIT



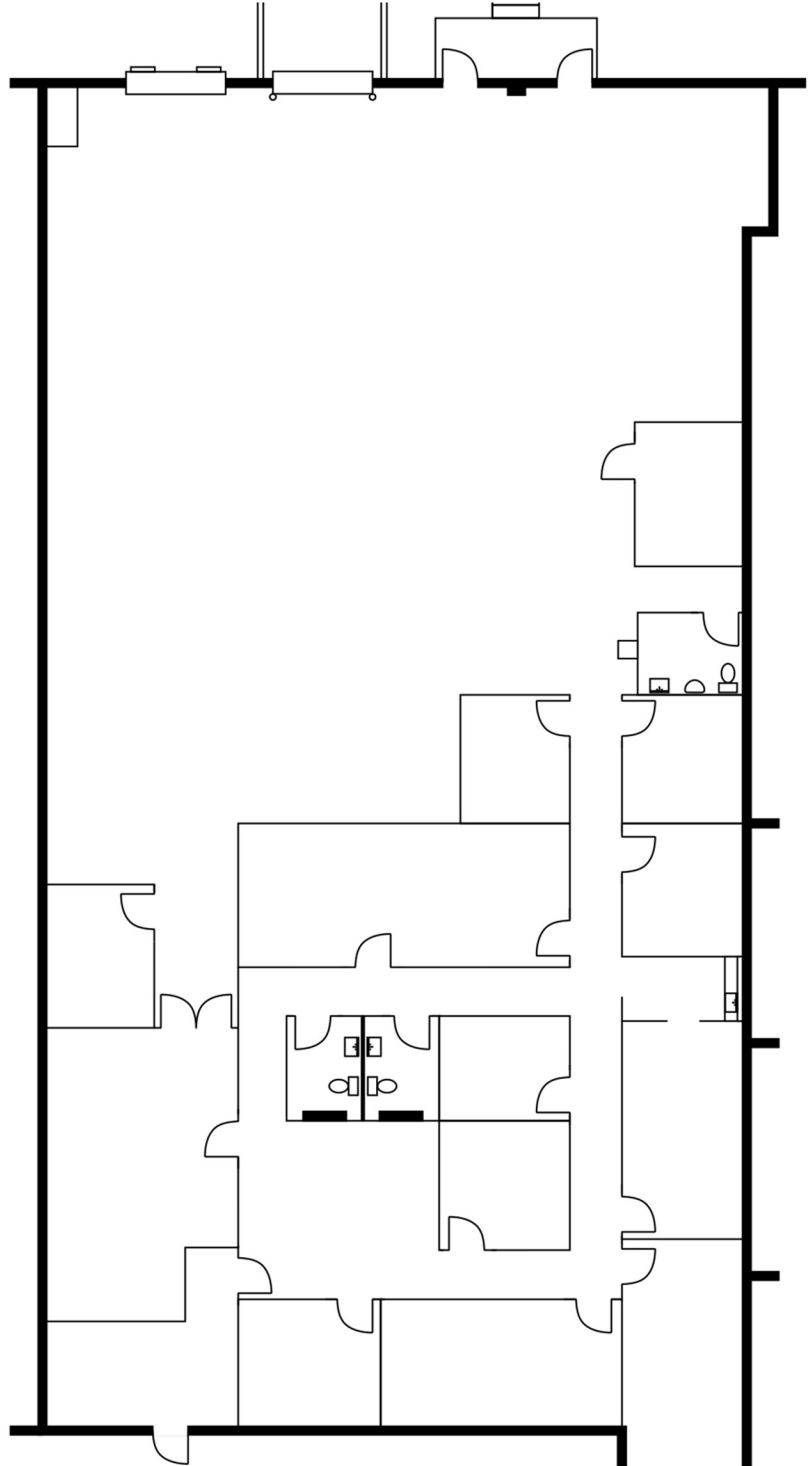
# FOR LEASE

**NORCROSS CENTER**  
2100-2200 NORCROSS PARKWAY  
NORCROSS, GA 30071

FLOOR PLAN | 2200 NORCROSS PARKWAY | SUITE 210 | 7,302 SF

## SUITE INFORMATION

7,302 SF Available  
3,279 SF Office  
4,023 SF Warehouse  
One (1) Dock High Door  
One (1) Drive In Door



**Hughes Commercial Real Estate, Inc.**  
8215 Roswell Road, Building 700  
Atlanta, GA 30350  
770-559-1099

**Matt Nelsen**  
404-431-0971  
matt@hughes-cre.com

Owned by:



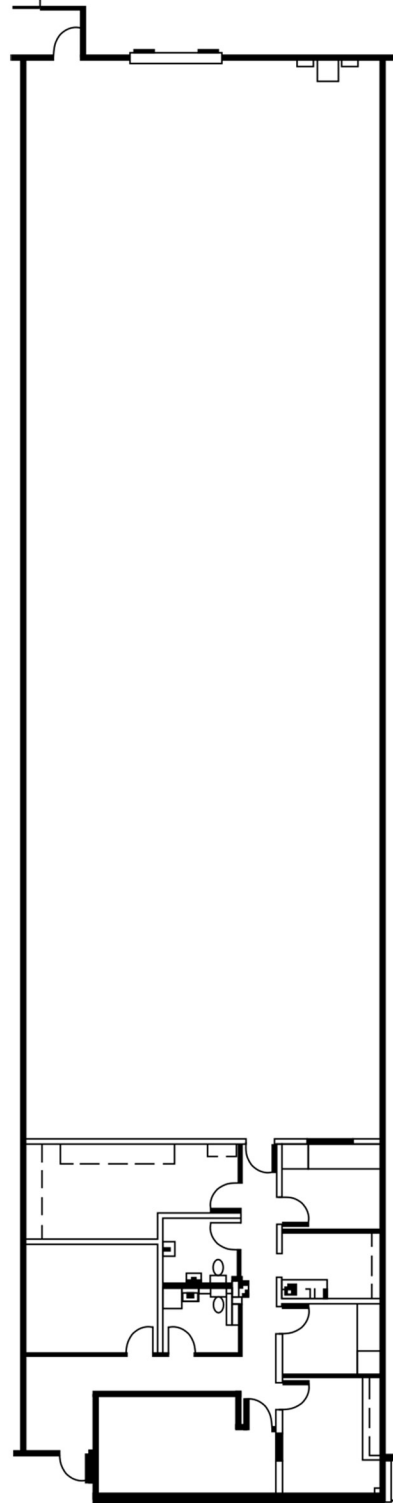
# FOR LEASE

**NORCROSS CENTER**  
2100-2200 NORCROSS PARKWAY  
NORCROSS, GA 30071

FLOOR PLAN | 2200 NORCROSS PARKWAY | SUITE 250 | 6,400 SF

## SUITE INFORMATION

6,400 SF Available  
1,549 SF Office  
4,851 SF Warehouse  
One (1) Dock High Door



**Hughes Commercial Real Estate, Inc.**  
8215 Roswell Road, Building 700  
Atlanta, GA 30350  
770-559-1099

**Matt Nelsen**  
404-431-0971  
matt@hughes-cre.com

Owned by:

