



**OFFICE SPACE FOR LEASE**  
**BUILDING 608**

**3,424 SQ. FT.**

**Address:**

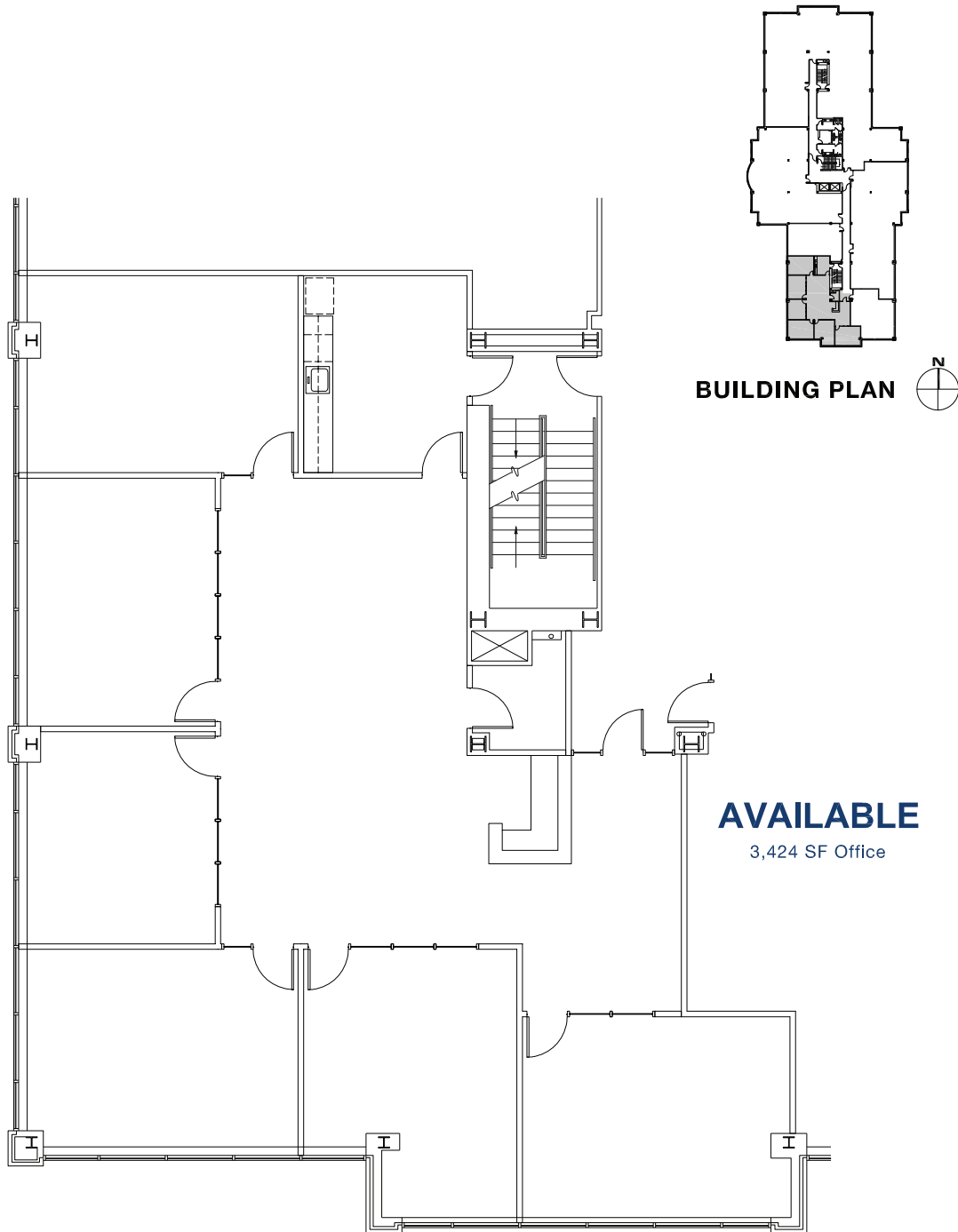
1499 SE Tech Center Drive  
Suite 270  
Vancouver, WA 98683

**Contact:**

Jake Bigby  
jakeb@pactrust.com  
Phone: 360.737.6300

**Highlights:**

- \$30.00/square foot, full service gross
- 4 /1,000 sq. ft. parking ratio
- Corner suite with excellent glass line
- Large private offices



**AVAILABLE**  
3,424 SF Office



## Where Business Grows

Established in 1996, Columbia Tech Center continues to be one of Vancouver's premier business-friendly neighborhoods. With beautifully landscaped community spaces, pedestrian and bike paths, and convenient retail shops and restaurants, companies value having amenities their employees enjoy.

Columbia Tech Center also offers modern, thoughtfully designed apartment homes as well as hotel and lodging options. Residents and visitors enjoy seasonal community events such as the farmer's market and summer concerts, as well as the year-round central park and children's nature play area.

Clark County is one of the fastest growing regions in Washington state and in the Portland, Oregon metropolitan area. With easy access to Portland International Airport; and major north-south traffic via the I-5 and I-205 freeways, getting here is easy.

Welcome to Columbia Tech Center. We're excited you're here.