



15 WORMANS MILL COURT

FREDERICK, MD 21701



AVAILABLE

Full/Partial Building Opportunity

Up to 39,966 SF

PROPERTY HIGHLIGHTS

- Easy Access to Route 26 and Highway 15
- 2 Stories
- 2.78 Acres
- M1 Zoning
- Ample Surface Parking
- Fully Sprinklered
- Multiple Private Entrances at Grade
- Close Proximity to Downtown Frederick
- Numerous Amenities in Immediate Vicinity
- Solid Employee Base
- Heavy Electrical Power & HVAC Service
- 150KW 120/208 Generator

Robert Pugh
rpugh@klnb.com
301.222.0211

Kenneth Fellows
kfellows@klnb.com
301.222.0210

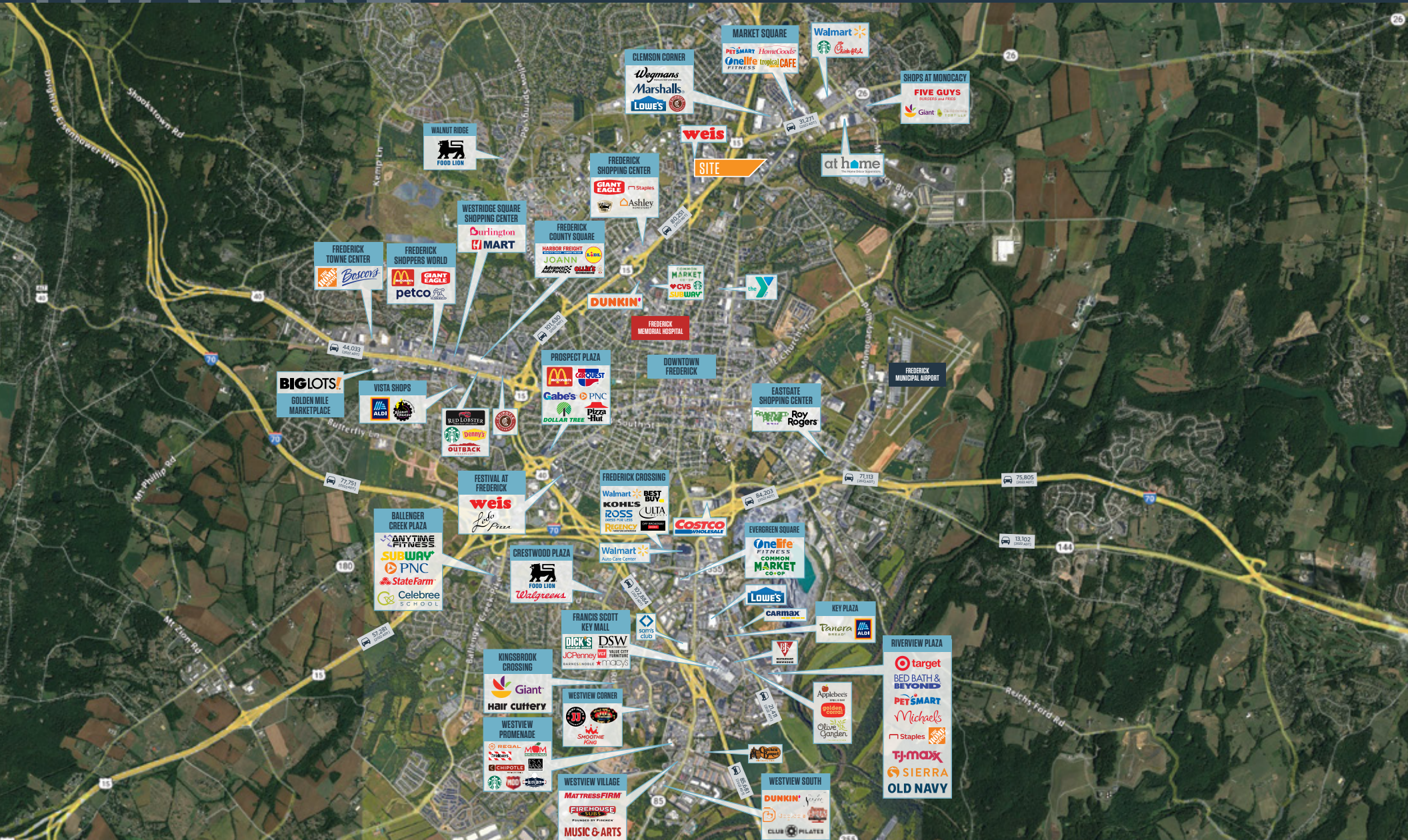
Lucas Glaeser
lglaeser@klnb.com
301.265.5614

klnb.com

MARKET

15 WORMANS COURT

FREDERICK, MD 21701



Robert Pugh
rpugh@klnb.com
301.222.0211

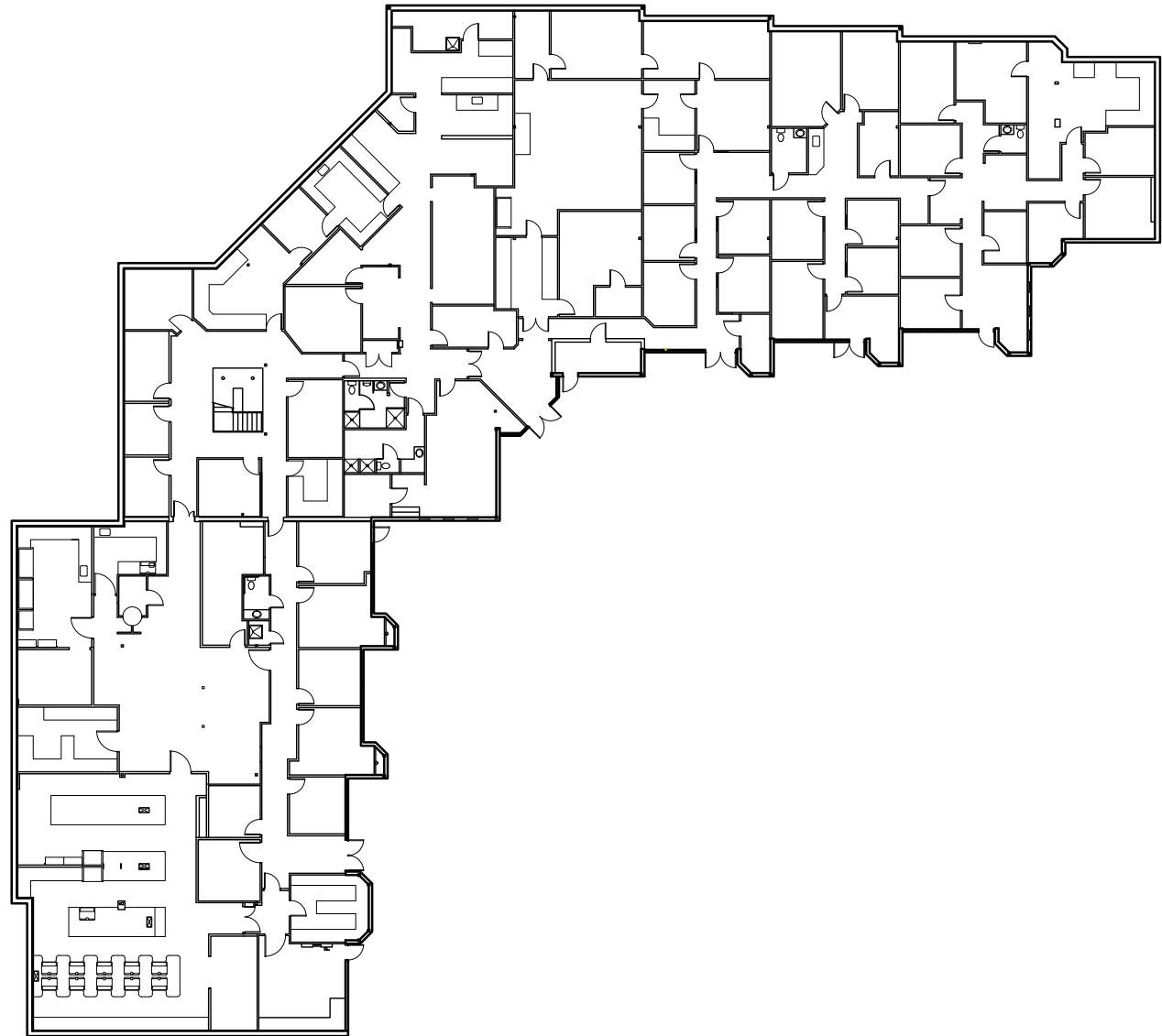
Kenneth Fellows
kfellows@klnb.com
301.222.0210

Lucas Glaeser
lglaeser@klnb.com
301.265.5614

klnb

First Floor | 19,983 SF

- Can be Divided into Various Space Sizes
- Built in 1988
- Heavy Power and HVAC Service
- 150 KW 120/208 Generator
- Increased MEP Available in Portions of the Building



SCALE 1/32"=1'-0"

PROJECT NUMBER 25-080

Robert Pugh
rpugh@klnb.com
301.222.0211

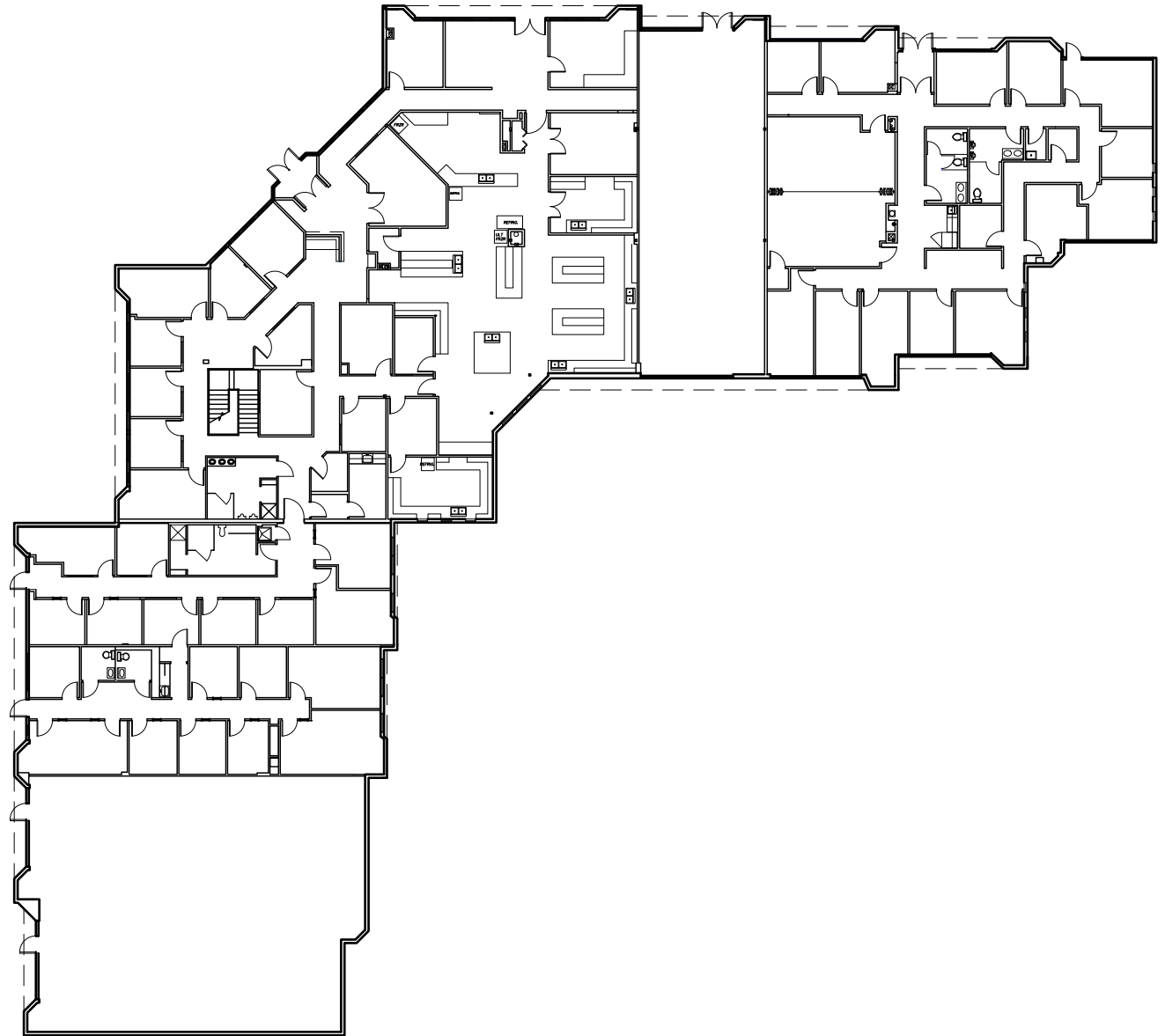
Kenneth Fellows
kfellows@klnb.com
301.222.0210

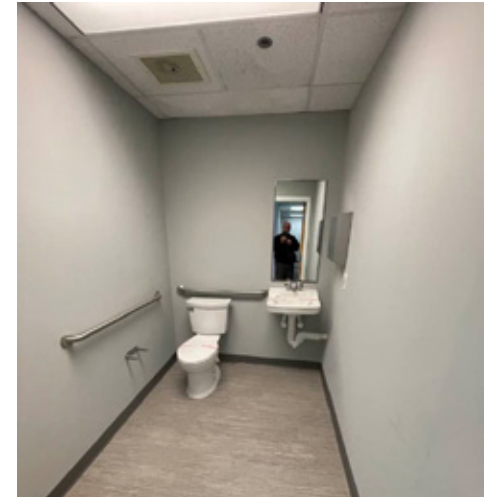
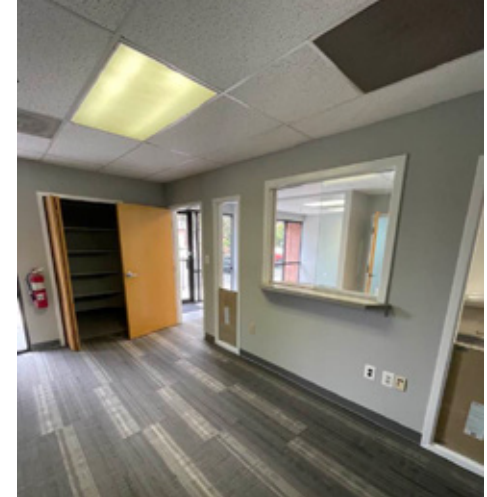
Lucas Glaeser
lglaeser@klnb.com
301.265.5614

klnb

Second Floor | 19,983 SF

- Can be Divided into Various Space Sizes
- Built in 1988
- Heavy Power and HVAC Service
- 150 KW 120/208 Generator
- Increased MEP Available in Portions of the Building





OUTSIDE

15 WORMANS COURT

FREDERICK, MD 21701



Robert Pugh
rpugh@klnb.com
301.222.0211

Kenneth Fellows
kfellows@klnb.com
301.222.0210

Lucas Glaeser
lglaeser@klnb.com
301.265.5614

klnb



15 WORMANS MILL COURT

FREDERICK, MD 21701

FOR MORE INFORMATION, PLEASE CONTACT:

Robert Pugh

rpugh@klnb.com
301.222.0211

Kenneth Fellows

kfellows@klnb.com
301.222.0210

Lucas Glaeser

lglaeser@klnb.com
301.265.5614

12435 Park Potomac Ave, Suite 250 Rockville, MD 20854

.....



[instagram.com/klnbcre](https://www.instagram.com/klnbcre)



[linkedin.com/company/klnb](https://www.linkedin.com/company/klnb)



[facebook.com/KLNBCRE](https://www.facebook.com/KLNBCRE)

CLICK TO VIEW PROPERTY WEBSITE

While we have no reason to doubt the accuracy of any of the information supplied, we cannot, and do not, guarantee its accuracy. All information should be independently verified prior to a purchase or lease of the property. We are not responsible for errors, omissions, misuse, or misinterpretation of information contained herein and make no warranty of any kind, express or implied, with respect to the property or any other matters.