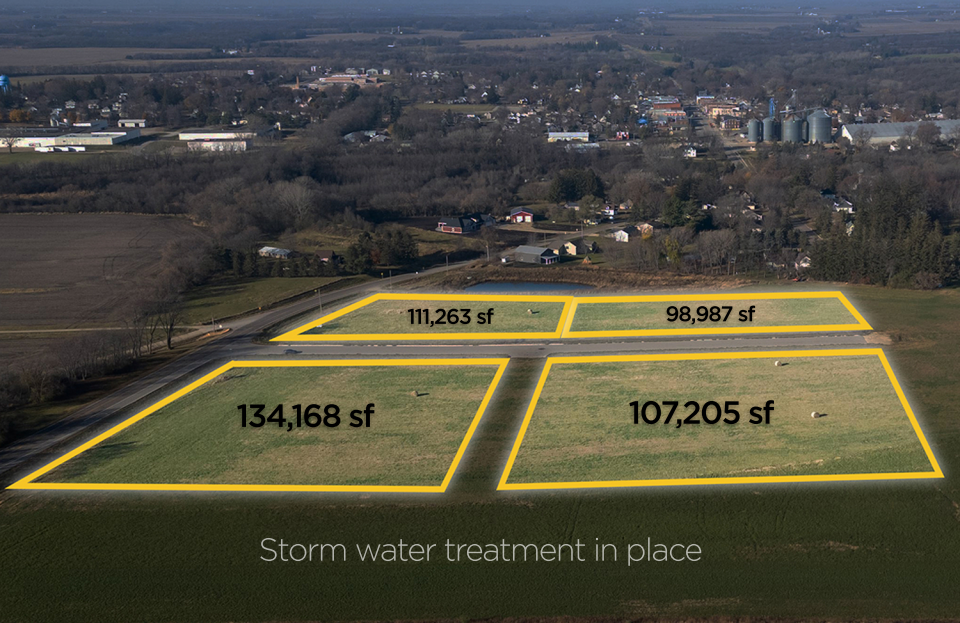


# KENYON INDUSTRIAL PARK

Land starting at \$.99 /SqFt

Land for as little as \$0/SqFt\*

\*final sale price dependent upon the estimated taxable value of the building constructed



Storm water treatment in place

**MATT GOVE**

(507) 289-8000

[matt@rgi-group.com](mailto:matt@rgi-group.com)

**BUCKY BEEMAN**

(507) 289-8000

[bucky@rgi-group.com](mailto:bucky@rgi-group.com)



Scan Me

