

333 NORTH MAIN STREET

RICHFIELD, UT 84701

RAMADA[®]
BY WYNDHAM



Located in the scenic core of Central Utah, the Ramada Inn in Richfield presents a 51-room hospitality asset offering direct access to major outdoor recreation areas, national parks, and key community attractions. This 34,135 SF hotel features an outdoor pool, spa, fitness center, banquet facilities, and an on-site ice cream shop.

Positioned just off I-70 and adjacent to Fish Lake National Forest, the property serves as a convenient and amenity-rich base for travelers exploring Southern Utah. Guests benefit from proximity to Snow College Richfield Campus, Sevier Valley Center, and the iconic Mystic Hot Springs.



34,135
GROSS SF



1.05
LOT AC



51
TOTAL ROOMS



Commercial
ZONING



1979 / 2025
YEAR BUILT / RENOVATED

Trenton Bright
Team Lead

trent@apex-cre.com
UT License: 7961776

Jon Robinson
Listing Contact

(801) 518-4491
jon@apex-cre.com

APEX
KW SOUTH VALLEY
KELLERWILLIAMS

333 NORTH
MAIN STREET

APEX

kw SOUTH VALLEY
KELLERWILLIAMS.

Amenities

- Pool
- Meeting Room
- Fitness Center
- 24-Hour Reception
- Free Wi-Fi
- Banquet Facilities
- Continental Breakfast
- Free Parking
- Sauna
- Business Center



Trenton Bright
Team Lead

trent@apex-cre.com
UT License: 7961776

Jon Robinson
Listing Contact

(801) 518-4491
jon@apex-cre.com

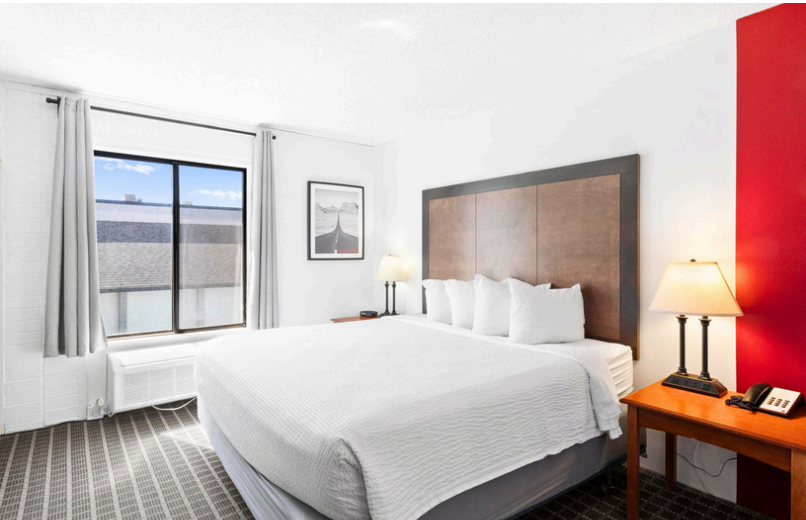
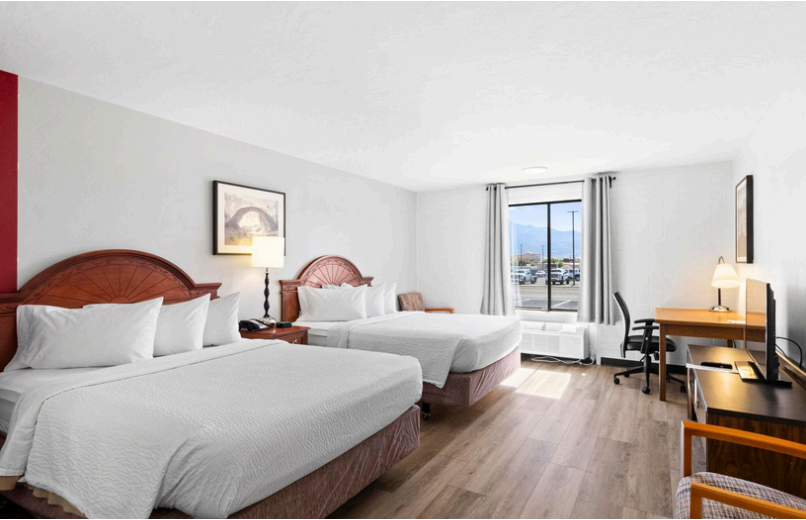
RAMADA
BY WYNDHAM



Each Keller Williams® office is
independently owned and operated.

333 NORTH
MAIN STREET

APEX **KW** SOUTH VALLEY
KELLERWILLIAMS.



Trenton Bright
Team Lead
trent@apex-cre.com
UT License: 7961776

Jon Robinson
Listing Contact
(801) 518-4491
jon@apex-cre.com

RAMADA
BY WYNDHAM



Each Keller Williams® office is
independently owned and operated.