



1660 Olympic Blvd

**1660 OLYMPIC BLVD
WALNUT CREEK, CA**

AVAILABILITIES

Suite 215 / ±1,599 RSF

- Two (2) Private offices, kitchen area and open space

Suite 315 / ±1,296 RSF

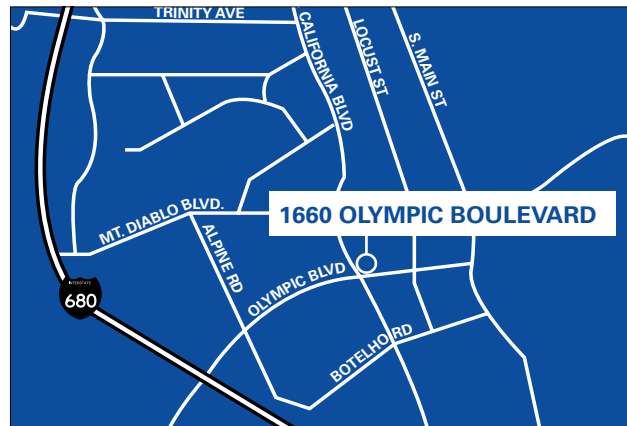
- One (1) Private office, kitchen area and open space
- Good Window Line

Suite 350 / ±1,885 RSF

- Four (4) Private offices, conf room and kitchenette

PROPERTY HIGHLIGHTS

- The best location in Walnut Creek
- Great access to I-680/Hwy 24
- Walking distance to the Broadway Plaza Shopping Center and numerous high-end restaurants
- Locally owned and operated



For information, please contact:

Rick Steffens

Senior Managing Director

t 925-974-0110

rick.steffens@nmrk.com

CA RE License #00466002

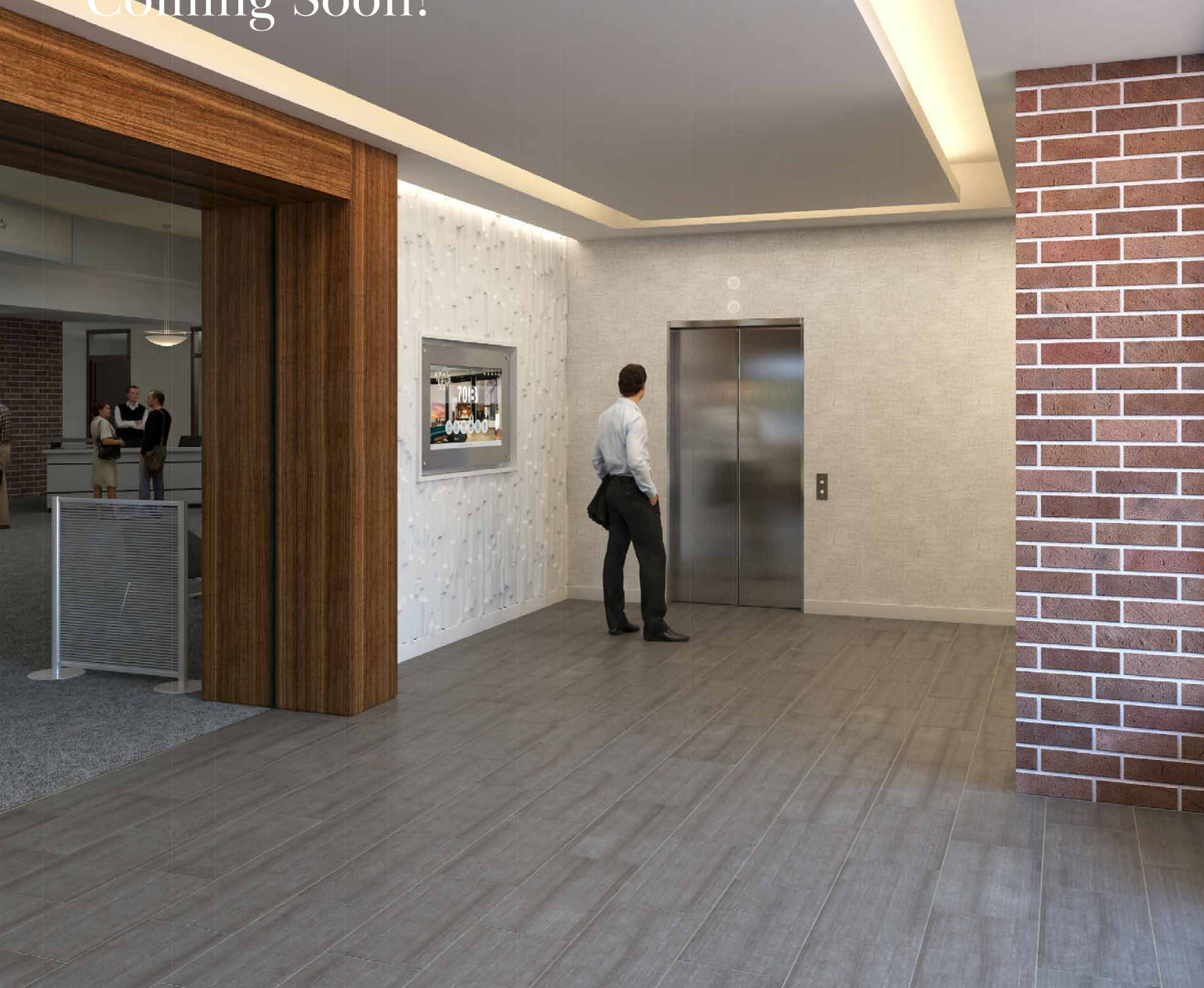
nmrk.com

NEWMARK



The distributor of this communication is performing acts for which a real estate license is required. The information contained herein has been obtained from sources deemed reliable but has not been verified and no guarantee, warranty or representation, either express or implied, is made with respect to such information. Terms of sale or lease and availability are subject to change or withdrawal without notice.

New Common Area Upgrades Coming Soon!



For information, please contact:

Rick Steffens

Senior Managing Director

t 925-974-0110

rick.steffens@nmrk.com

CA RE License #00466002

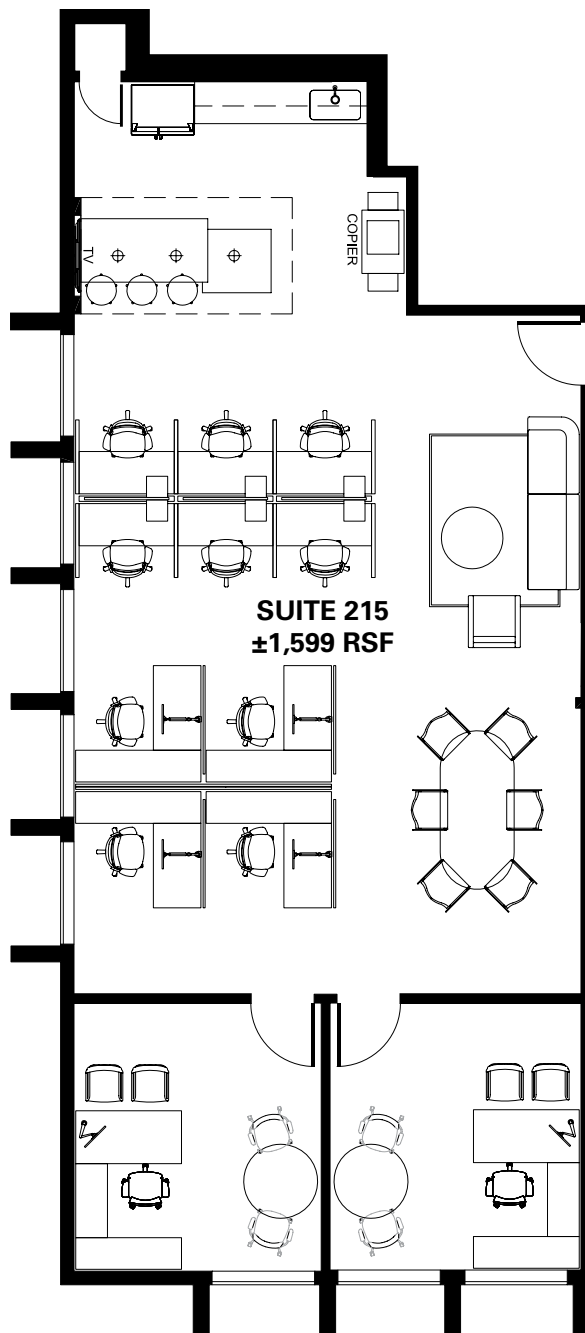
nmrk.com

NEWMARK



The distributor of this communication is performing acts for which a real estate license is required. The information contained herein has been obtained from sources deemed reliable but has not been verified and no guarantee, warranty or representation, either express or implied, is made with respect to such information. Terms of sale or lease and availability are subject to change or withdrawal without notice.

SUITE 215 *Hypothetical*



For information, please contact:

Rick Steffens

Senior Managing Director

t 925-974-0110

rick.steffens@nrmk.com

CA RE License #00466002

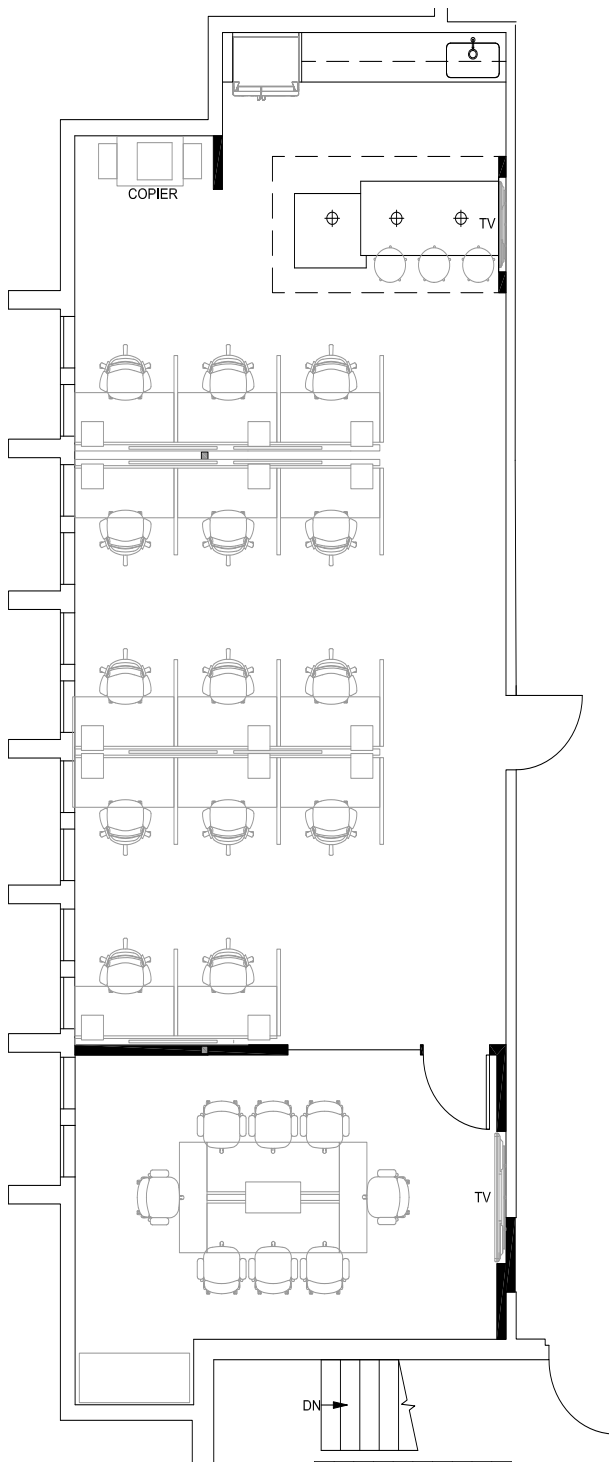
nrmk.com

NEWMARK



The distributor of this communication is performing acts for which a real estate license is required. The information contained herein has been obtained from sources deemed reliable but has not been verified and no guarantee, warranty or representation, either express or implied, is made with respect to such information. Terms of sale or lease and availability are subject to change or withdrawal without notice.

SUITE 315 *Hypothetical*



For information, please contact:

Rick Steffens

Senior Managing Director

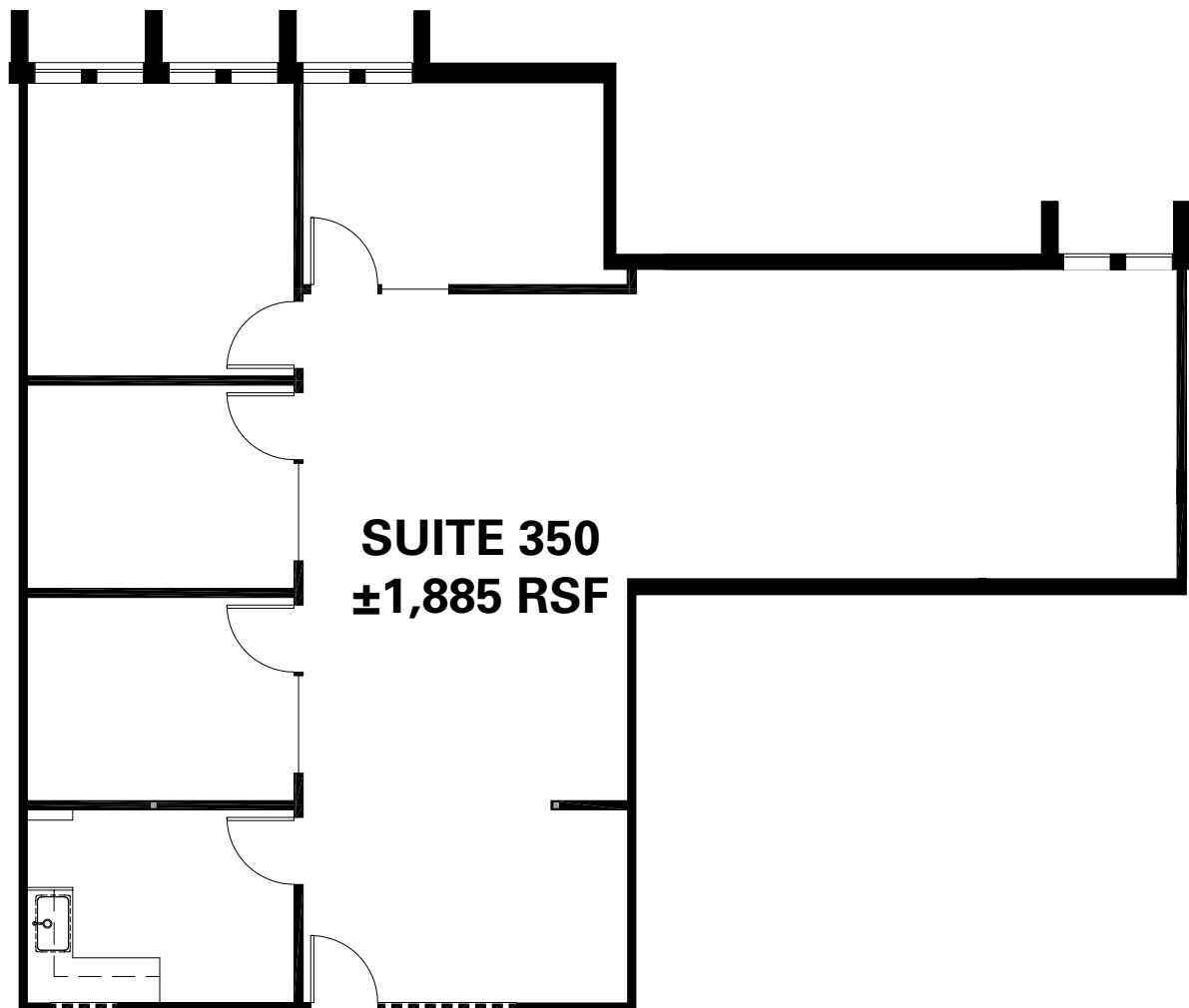
t 925-974-0110

rick.steffens@nrmk.com

CA RE License #00466002

nrmk.com

SUITE 350 *Hypothetical*



For information, please contact:

Rick Steffens

Senior Managing Director

t 925-974-0110

rick.steffens@nrmk.com

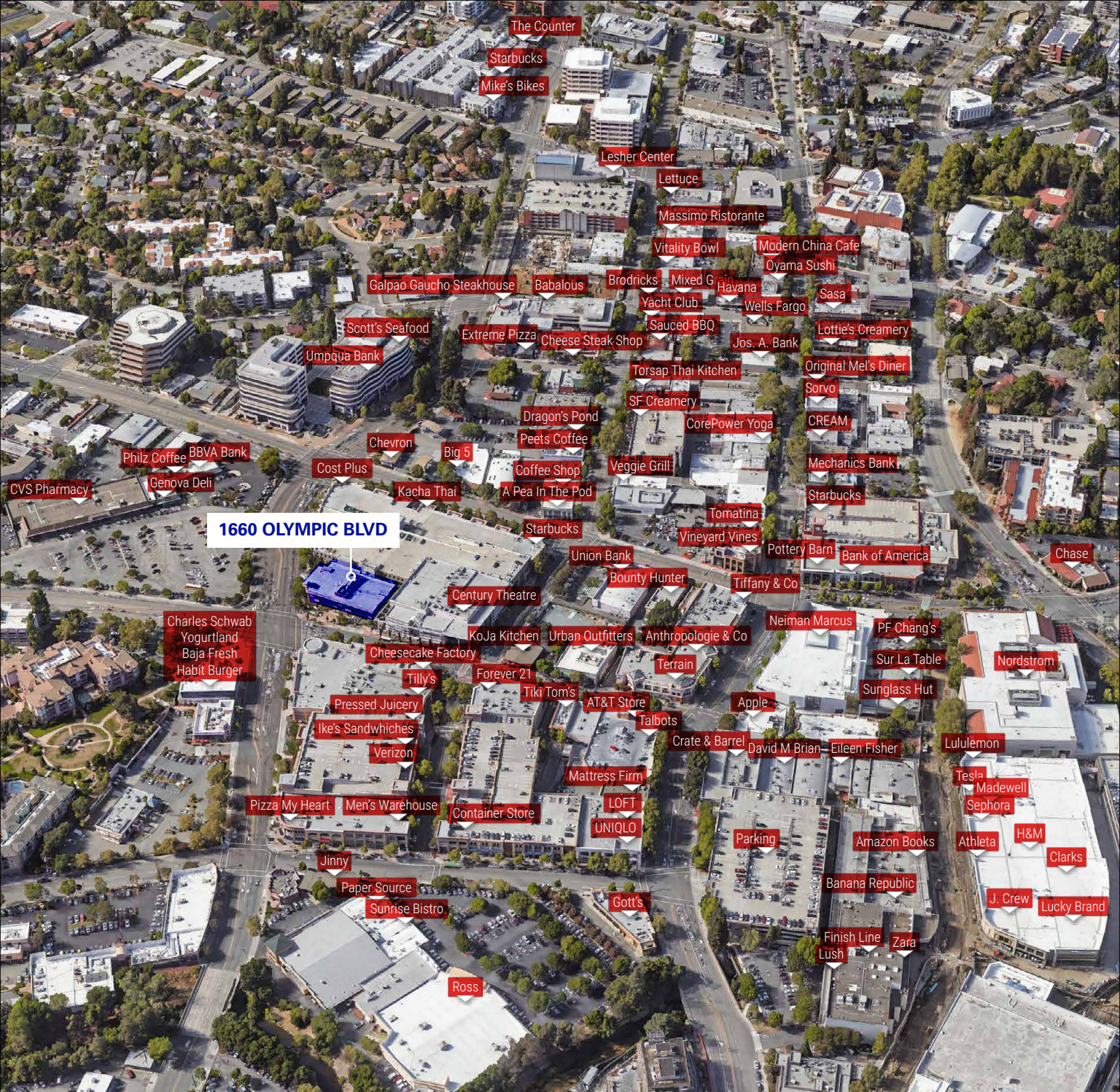
CA RE License #00466002

nrmk.com

NEWMARK



The distributor of this communication is performing acts for which a real estate license is required. The information contained herein has been obtained from sources deemed reliable but has not been verified and no guarantee, warranty or representation, either express or implied, is made with respect to such information. Terms of sale or lease and availability are subject to change or withdrawal without notice.



1660 OLYMPIC BLVD

For information, please contact:

Rick Steffens

Senior Managing Director

t 925-974-0110

rick.steffens@nrmk.com

CA RE License #00466002

nrmk.com



The distributor of this communication is performing acts for which a real estate license is required. The information contained herein has been obtained from sources deemed reliable but has not been verified and no guarantee, warranty or representation, either express or implied, is made with respect to such information. Terms of sale or lease and availability are subject to change or withdrawal without notice.