

# PROFESSIONAL OFFICE SPACE AVAILABLE

5255 Ronald Reagan Parkway, Johnstown, 80534

## AVAILABLE FOR LEASE



### AVAILABLE:

4,994± RSF or demisable to:

Suite 001-A: 2,237± RSF

Suite 001-B: 2,757± RSF

### BASE RENT:

\$17.00 / RSF NNN as-is or

\$17.50 / RSF if demised, subject to lease rate and term

### NNN:

\$16.34 / SF + utilities

### TOTAL RENT:

\$13,875.00/ month

Suite 001-A: \$6,308.34 / month

Suite 001-B: \$7,774.74 / month

### PROPERTY HIGHLIGHTS

- Class A office space in 2534
- Private offices, conference rooms (2) open work area
- Abundant parking
- Close to Scheels, gun range, many restaurants and services
- Walk out ground level
- Plenty of windows and natural light
- ADA Accessible
- Elevator Access

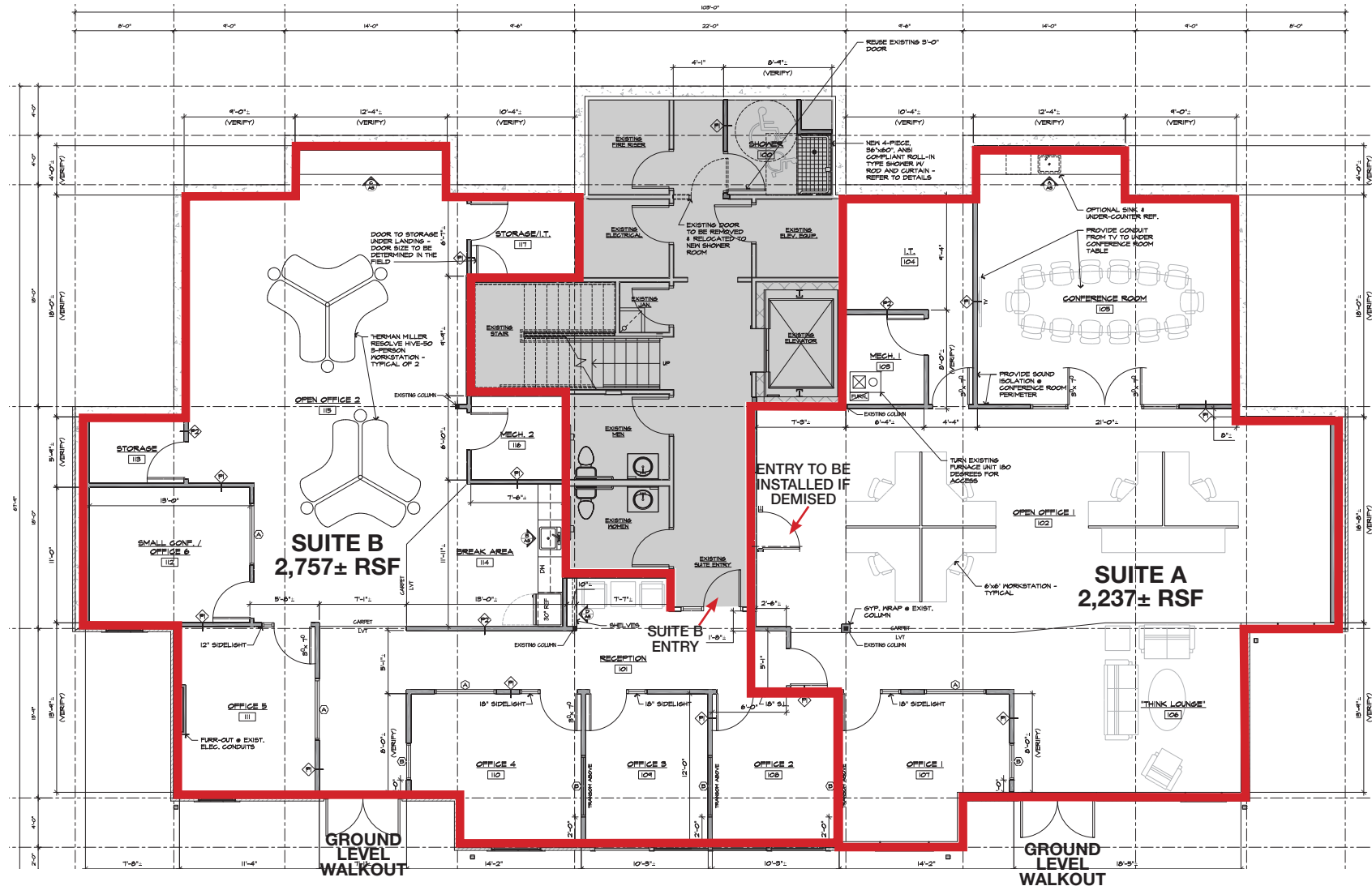
# FLOOR PLAN

5255 RONALD REAGAN BOULEVARD, JOHNSTOWN, CO 80534

SUITE A - 2,237± RSF

SUITE B - 2,757± RSF

TOTAL - 4,994± RSF



The information contained herein, while from sources believed reliable, is not guaranteed and is subject to change without notice. NAI Affinity makes no warranties or representations as to the accuracy of this information. This brochure is the exclusive property of NAI Affinity. Any duplication without NAI Affinity's express written consent is prohibited.



# PROPERTY PHOTOS

5255 RONALD REAGAN BOULEVARD, JOHNSTOWN, CO 80534



The information contained herein, while from sources believed reliable, is not guaranteed and is subject to change without notice. NAI Affinity makes no warranties or representations as to the accuracy of this information. This brochure is the exclusive property of NAI Affinity. Any duplication without NAI Affinity's express written consent is prohibited.



# LOCATION MAP



The information contained herein, while from sources believed reliable, is not guaranteed and is subject to change without notice. NAI Affinity makes no warranties or representations as to the accuracy of this information. This brochure is the exclusive property of NAI Affinity. Any duplication without NAI Affinity's express written consent is prohibited.



# EXECUTIVE SUMMARY

## DEMOGRAPHICS

	1-MILE	3-MILES	5-MILES
2024 Est. Population	3,365	19,556	61,821
2029 Projected Population	4,514	23,205	69,485
2024 Avg. Household Income	\$140,031	\$147,507	\$139,806
Bachelor's Degree or Higher	70.6%	60.1%	53.1%
Median Age	34.7	36.3	39.0
Daytime Employment	4,608	21,614	44,885

Source: Site To Do Business, October 2024

## NEARBY ATTRACTIONS/DRIVERS



## NORTHERN COLORADO ACCOLADES

Continually being recognized on “top and best of” lists.

- Fort Collins ranked No.11 The best U.S. cities to live in 2022: MarketWatch - Aug 2022
- Larimer and Weld counties populations are projected to increase by 45% by 2040, Denver Post, July 2022
- Fort Collins ranks #5, ‘Best Places to Live 2020-21’, U.S. News. October 2020
- Fort Collins-Loveland area ranked No. 6, ‘Best Housing Markets for Growth and Stability’ in 2020, SmartAsset - June, 2020
- Windsor ranks #1, ‘Colorado’s Safest Cities of 2020’, SafeWise. June 2020
- Greeley ranks #3 nationwide for one-year population growth rate. U.S. Census Bureau. March, 2020

The information contained herein, while from sources believed reliable, is not guaranteed and is subject to change without notice. NAI Affinity makes no warranties or representations as to the accuracy of this information. This brochure is the exclusive property of NAI Affinity. Any duplication without NAI Affinity's express written consent is prohibited.

## DRIVE TIMES

US Hwy 34 **3 MINS**

Interstate 25 **4 MINS**

Medical Center of Rockies **6 MINS**

Northern Colorado Regional Airport **9 MINS**

Windsor **12 MINS**

Fort Collins **13 MINS**

Greeley **14 MINS**

Cheyenne, WY **45 MINS**

Denver/DIA **49 MINS**

