

Plug & Play Office Sublease

17,302 - 46,654 SF on the First & Third Floors

215 First Street
Cambridge, Massachusetts



Opportunity Details

- + 46,654 SF
 - 17,302 SF on the 1st floor
 - 29,352 SF on the 3rd floor
- + Available Immediately
- + Term Through 9/30/2025
- + Furniture Available in Brand-New Condition

Onsite Amenities

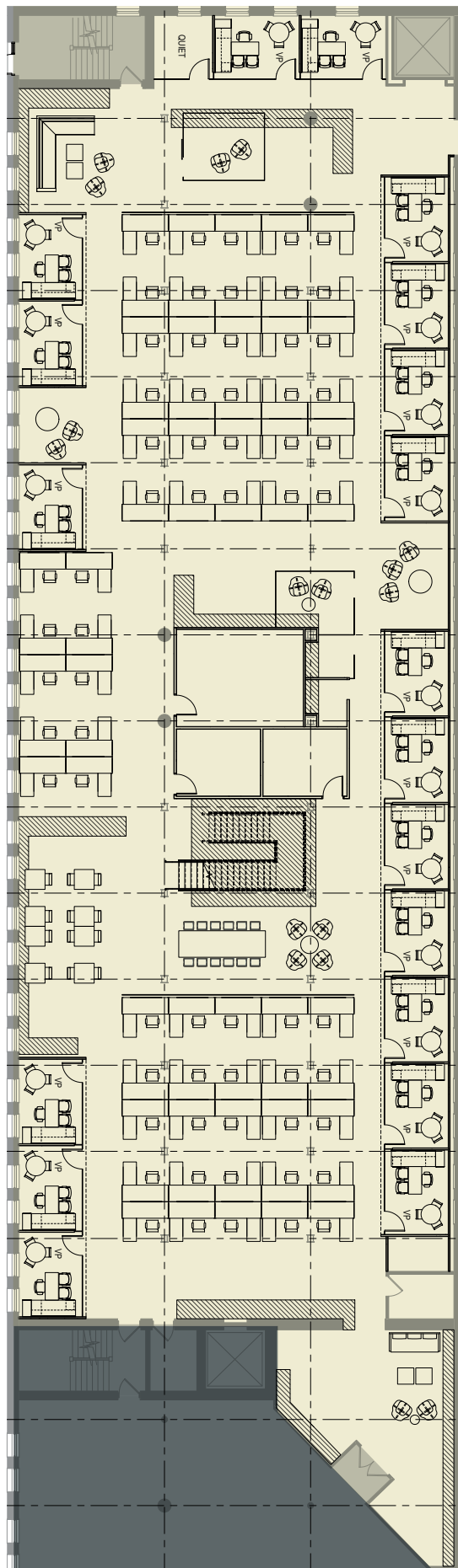
- + 1st Floor Seminar Room
- + Two Large Conference Rooms on Lower Level
- + Cambridge Athletic Club
- + Large Lobby with Seating Area

17,302 SF

First Floor

Plan Breakdown

- + 19 Private Offices
- + 3 Open Collaboration Areas
- + 65 Open Workstations
- + Reception Directly Off Lobby

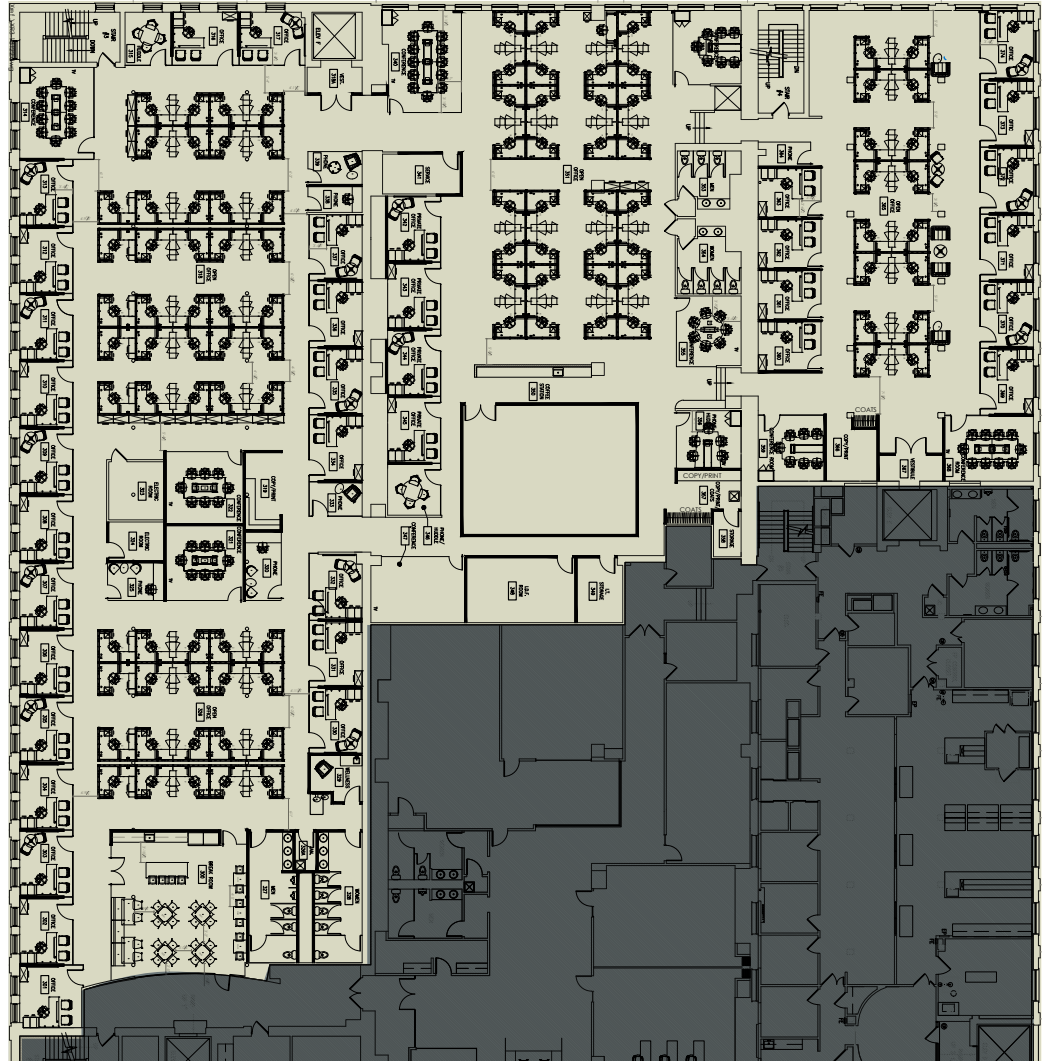


29,352 SF

Third Floor

Plan Breakdown

- + 101 Workstations
- + 36 Private Offices
- + 9 Conference Rooms
- + 7 Phone/Huddle Rooms
- + 1 Kitchen/Break Room
- + 1 Coffee bar



Access & Amenities



Contact Us

Jon Varholak
Vice Chairman
+1 617 439 8688
jon.varholak@cbre.com

Eric Smith
Executive Vice President
+1 617 933 0176
eric.smith2@cbre.com

Tess Chandler
Senior Associate
+1 617 429 7812
tess.chandler@cbre.com

Lauren Drakeley
Associate
+1 617 912 6944
lauren.drakeley@cbre.com

© 2023 CBRE, Inc. All rights reserved. This information has been obtained from sources believed reliable, but has not been verified for accuracy or completeness. You should conduct a careful, independent investigation of the property and verify all information. Any reliance on this information is solely at your own risk. CBRE and the CBRE logo are service marks of CBRE, Inc. All other marks displayed on this document are the property of their respective owners, and the use of such logos does not imply any affiliation with or endorsement of CBRE. Photos herein are the property of their respective owners. Use of these images without the express written consent of the owner is prohibited.