

NEWPORT TOWER & MARINA

3333 W COAST HWY, NEWPORT BEACH



NOW LEASING

W Coast Hwy Waterfront Medical Offices

LEASED BY:

RW REDWOOD
WEST

WELCOME TO

NEWPORT TOWER & MARINA

Newport Tower and Marina is centrally located on Pacific Coast Highway adjacent to Hoag Memorial Presbyterian Hospital within the affluent coastal community of Newport Beach. The five story 34,386 SF Class A medical office tower overlooks Newport Harbor and the Pacific Ocean providing a unique tenant experience with its floor to ceiling glass, accessible location and ample parking. Immersed within a range of high end residential, upscale retail and dining, Newport Tower & Marina truly embodies the Newport Beach lifestyle offering a best in class experience for physicians and office users alike.





BILLY'S AT THE BEACH



THE AMENITIES

The Features & Amenities



FEATURED LOCATION

Billy's at the Beach has been serving the freshest Hawaiian - inspired cuisine on the picturesque Newport Bay for over two decades. Enjoy fresh seafood, classic steaks, island-inspired favorites, world famous Mai Tais and endless waterfront views.

- Adjacent to Hoag Memorial Presbyterian Hospital of Newport Beach
- Highly visible location on Pacific Coast Highway with prominent signage
- Panoramic views of Newport Harbor and the Pacific Ocean
- 5:1,000 surface parking
- Convenient access to Orange County via the 55, 73, 405 and 5 freeways



BILLY'S AT THE BEACH



TAVERN HOUSE KITCHEN + BAR

NEIGHBORHOOD HOT SPOTS



C'EST SI BON BAKERY



LIDO MARINA VILLAGE



LOUIE'S BY THE BAY

AREA OVERVIEW

FASHION ISLAND

BACK BAY

BALBOA ISLAND

LIDO ISLAND

BILLY'S AT THE BEACH

NEWPORT TOWER & MARINA

LIDO MARINA VILLAGE

LIDO VILLAS

LIDO HOUSE HOTEL

NEWPORT TOWER & MARINA

NEWPORT TOWER & MARINA

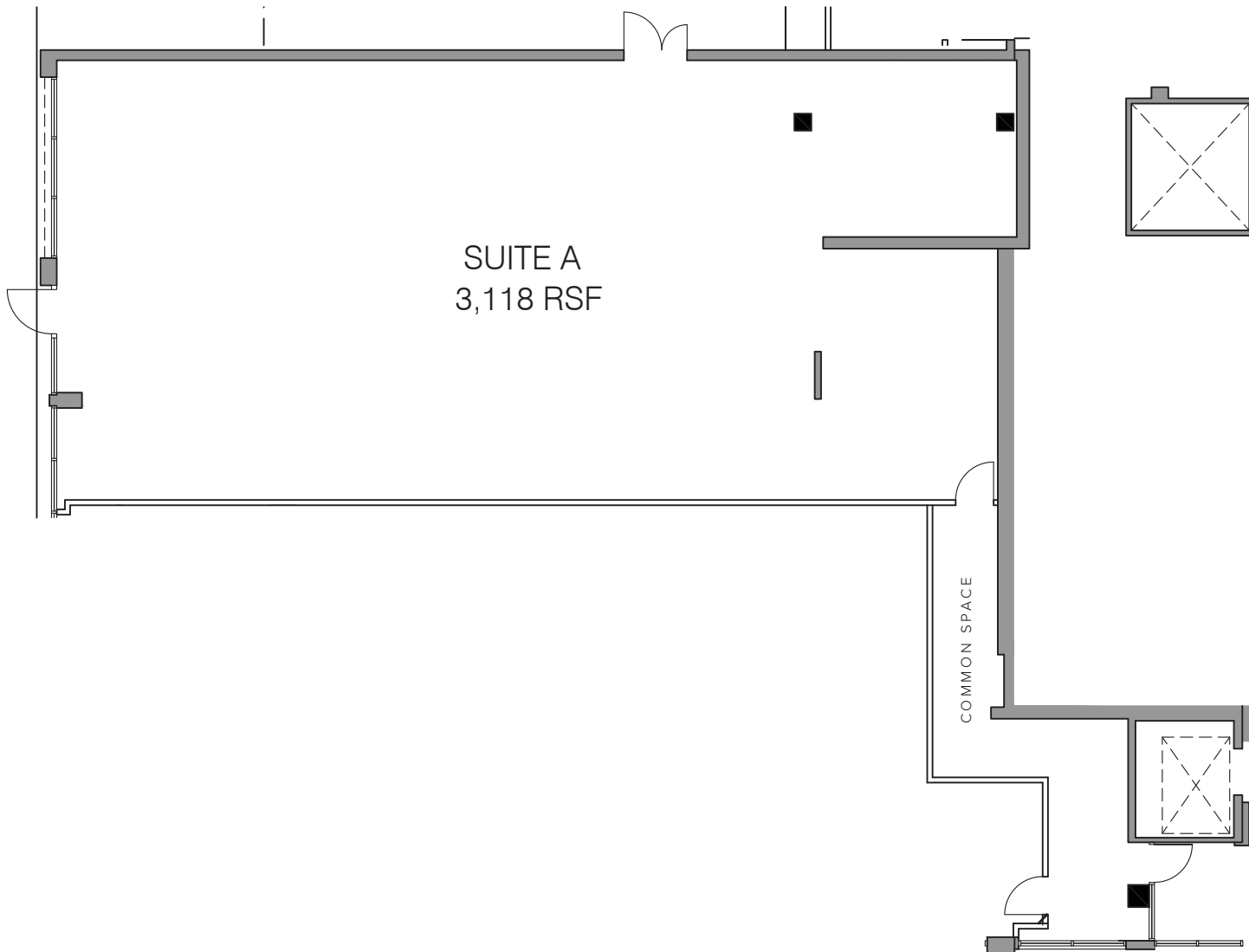
NEWPORT TOWER & MARINA

NEWPORT TOWER & MARINA

SUITE 101

+/- 3,118 SF

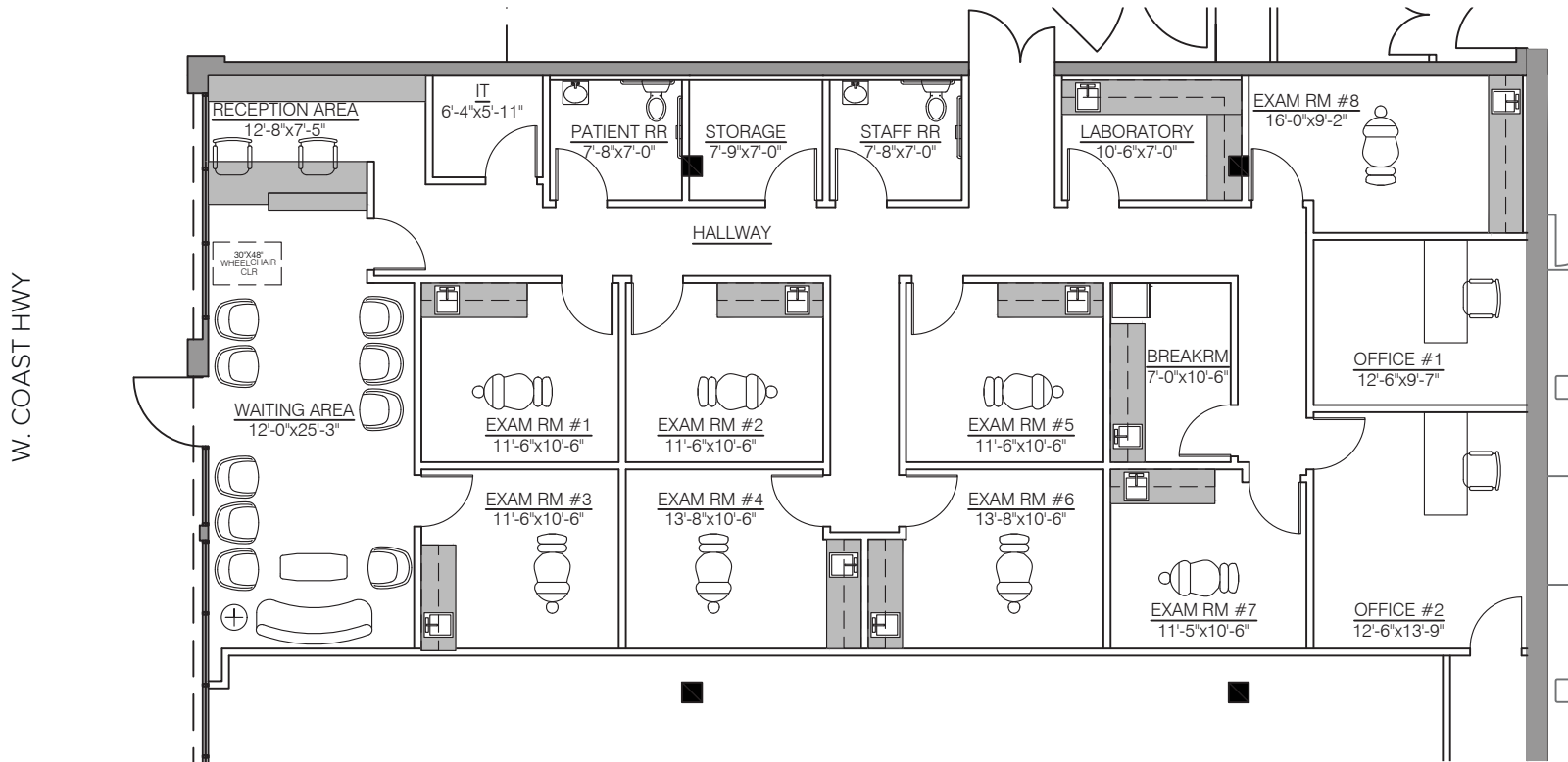
W. COAST HWY



SUITE 101

+/- 3,118 SF

HYPOTHETICAL FLOORPLAN



NEWPORT TOWER & MARINA

3333 W COAST HWY, NEWPORT BEACH

For more information, please contact:

John Pomer

949.945.2649

john@redwoodwest.com

Lic. #01440689

Ben Gott

949.945.2648

ben@redwoodwest.com

Lic. #01724507

Christian Heffelman

949.945.2645

christian@redwoodwest.com

Lic. #02101426

Julie Johnson

949.945.2644

julie@redwoodwest.com

Lic. #02156626

LEASED BY:
RW | REDWOOD
WEST

The information contained in this document has been obtained from sources believed reliable. While Redwood West does not doubt its accuracy, Redwood West has not verified it and makes no guarantee, warranty or representation about it. It is your responsibility to independently confirm its accuracy and completeness. You and your advisors should conduct a careful, independent investigation of the property to determine your satisfaction to the suitability of the property for your needs.