

# THE MARKETPLACE AT CARNES CROSSROADS OUTPARCELS



2700 N. Main Street, Summerville, SC

**NAI**Charleston

Will Sherrod, CCIM  
843.364.3796

[wsherrod@naicharleston.com](mailto:wsherrod@naicharleston.com)

Welles Worthen  
770.905.9918

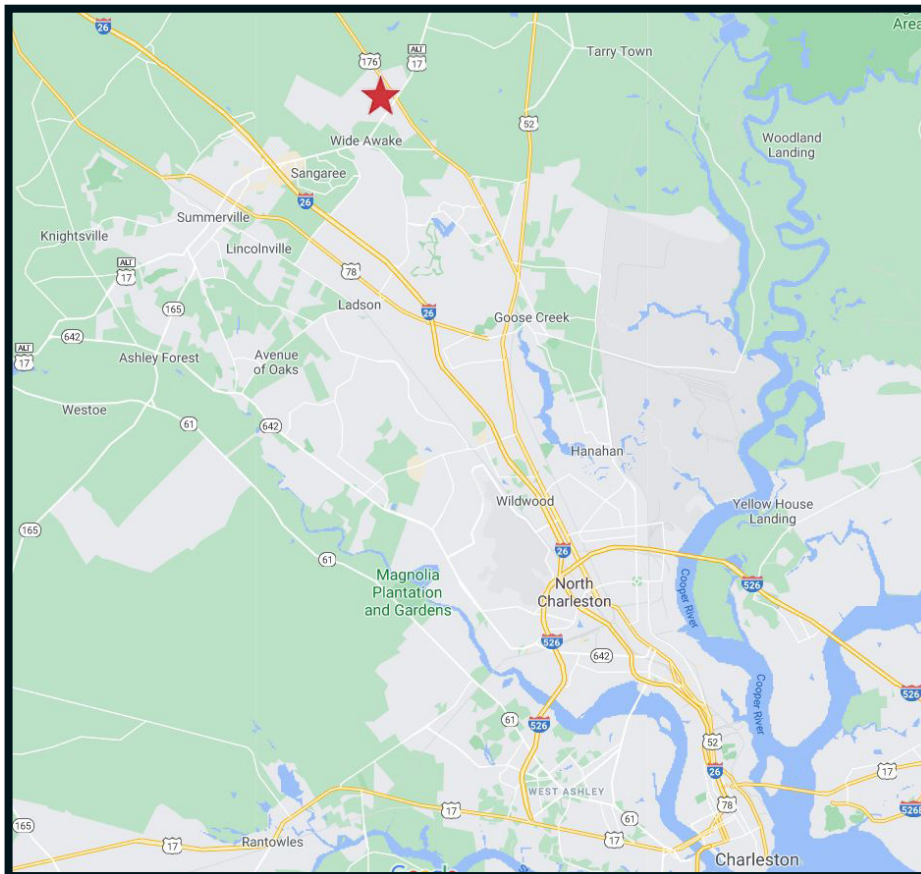
[wworthen@naicharleston.com](mailto:wworthen@naicharleston.com)



# PROPERTY SUMMARY

The intersection of N. Main (Hwy 17-A) and State Road (Hwy 176), known as Carnes Crossroads, is rapidly emerging as the epicenter of growth in the Summerville and Goose Creek markets. The Marketplace at Carnes Crossroads will be the retail focal point of the area, creating a true sense of place for the residents in the surrounding neighborhoods. It will be anchored by a ±48,910 square foot Publix grocer and provide over 41,000 square feet of retail space. With numerous restaurant opportunities overlooking the lake with exceptional outside dining experiences and over 10 acres of outparcel pads, The Marketplace at Carnes Crossroads will be a destination point for years to come.

**\*\*Call agents for outparcel pricing and details.\*\***



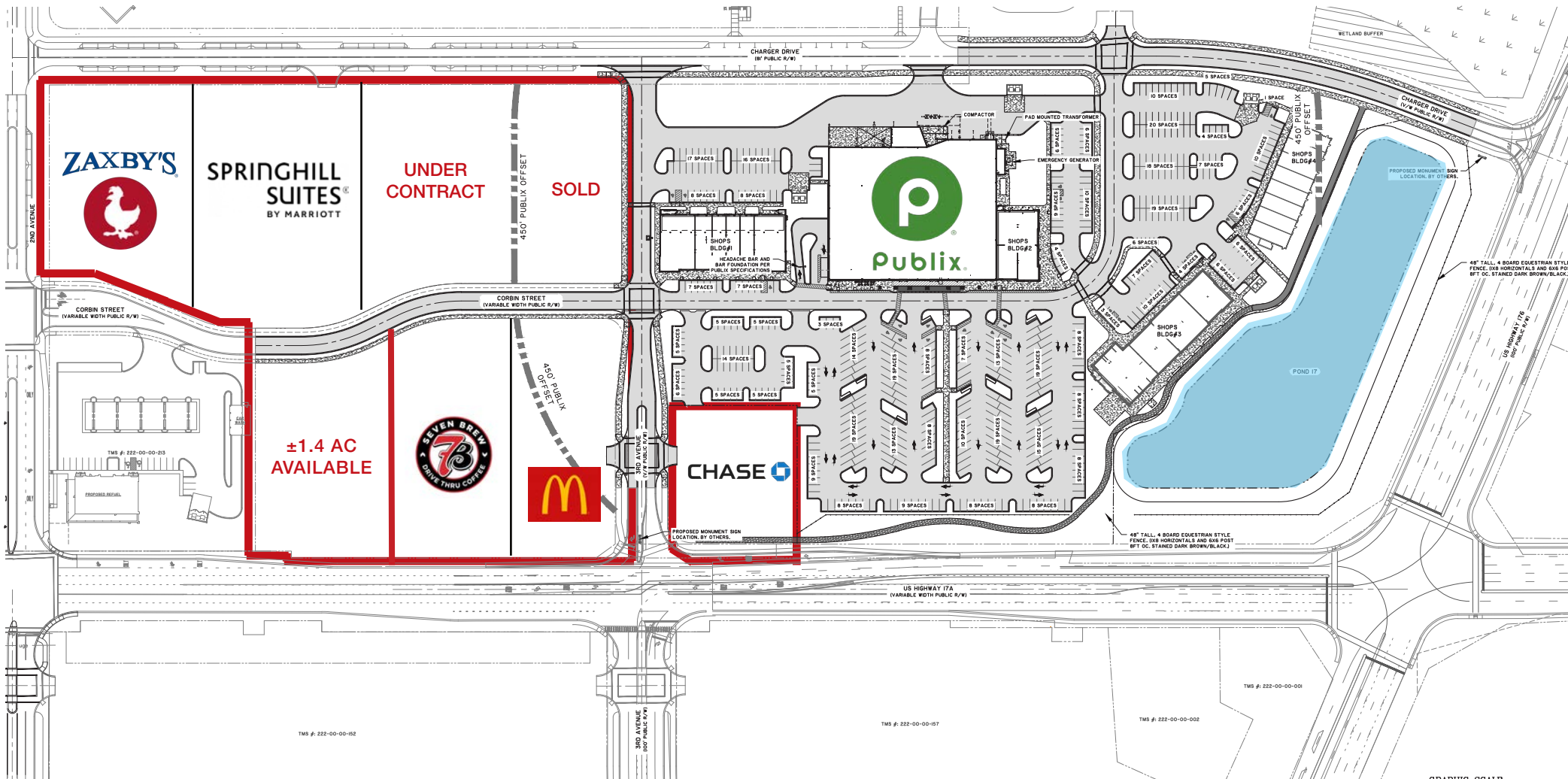
## Highlights & Demographics

- Prime location at apex of Carnes, Nexton, and Cane Bay mega developments
- ±1,500 - 3,000 SF retail space available
- ±41,000 SF Publix anchored retail/restaurant shop space
- 10+ AC of commercial outparcels available
- In front of Northwood Academy (K-12)
- Across from new Roper Hospital

## MARKET DEMOGRAPHICS:

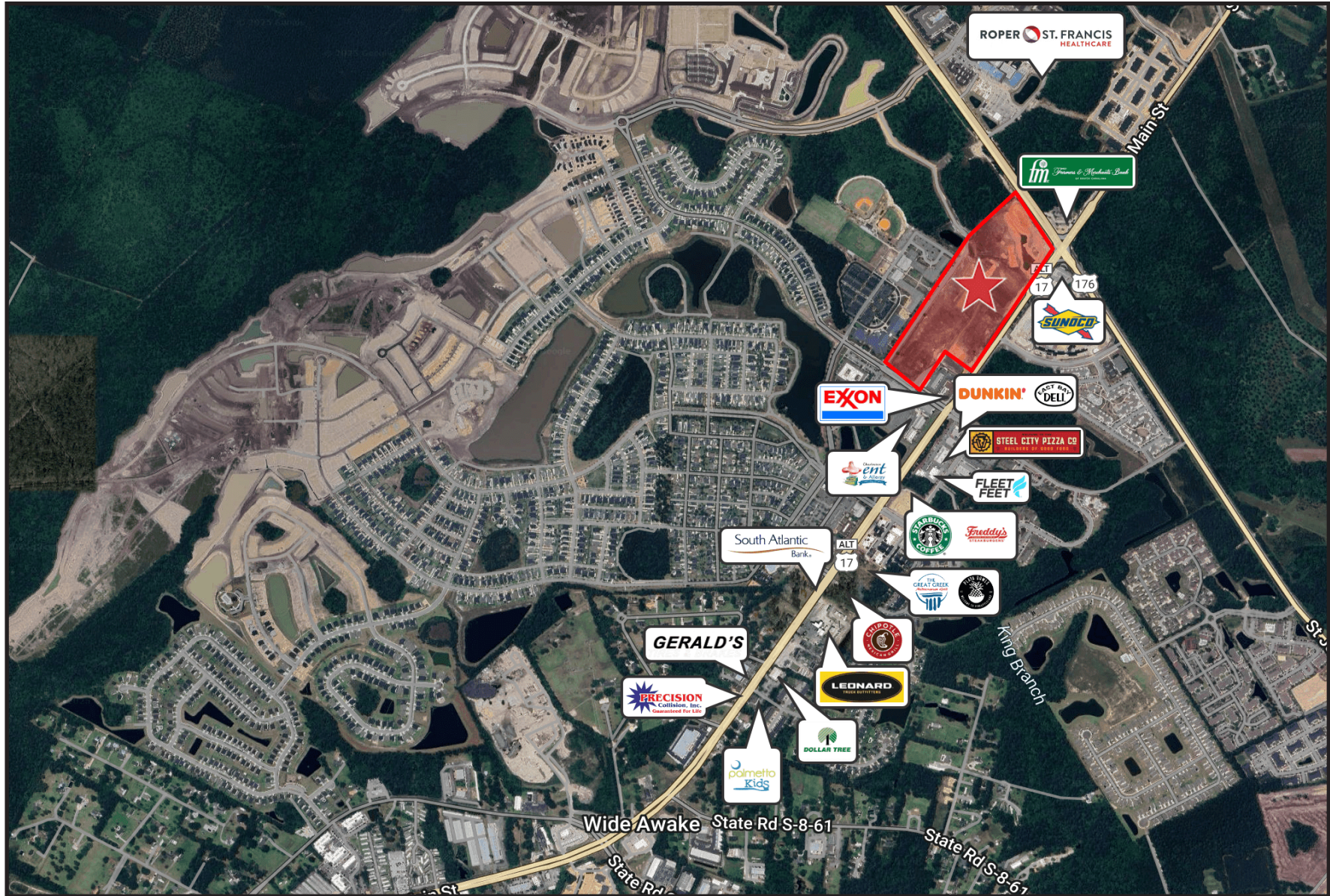
	1 mile	3 mile	5 mile
Population	3,766	39,015	99,171
Household Income	\$68,484	\$70,203	\$74,682

# AVAILABLE OUTPARCELS



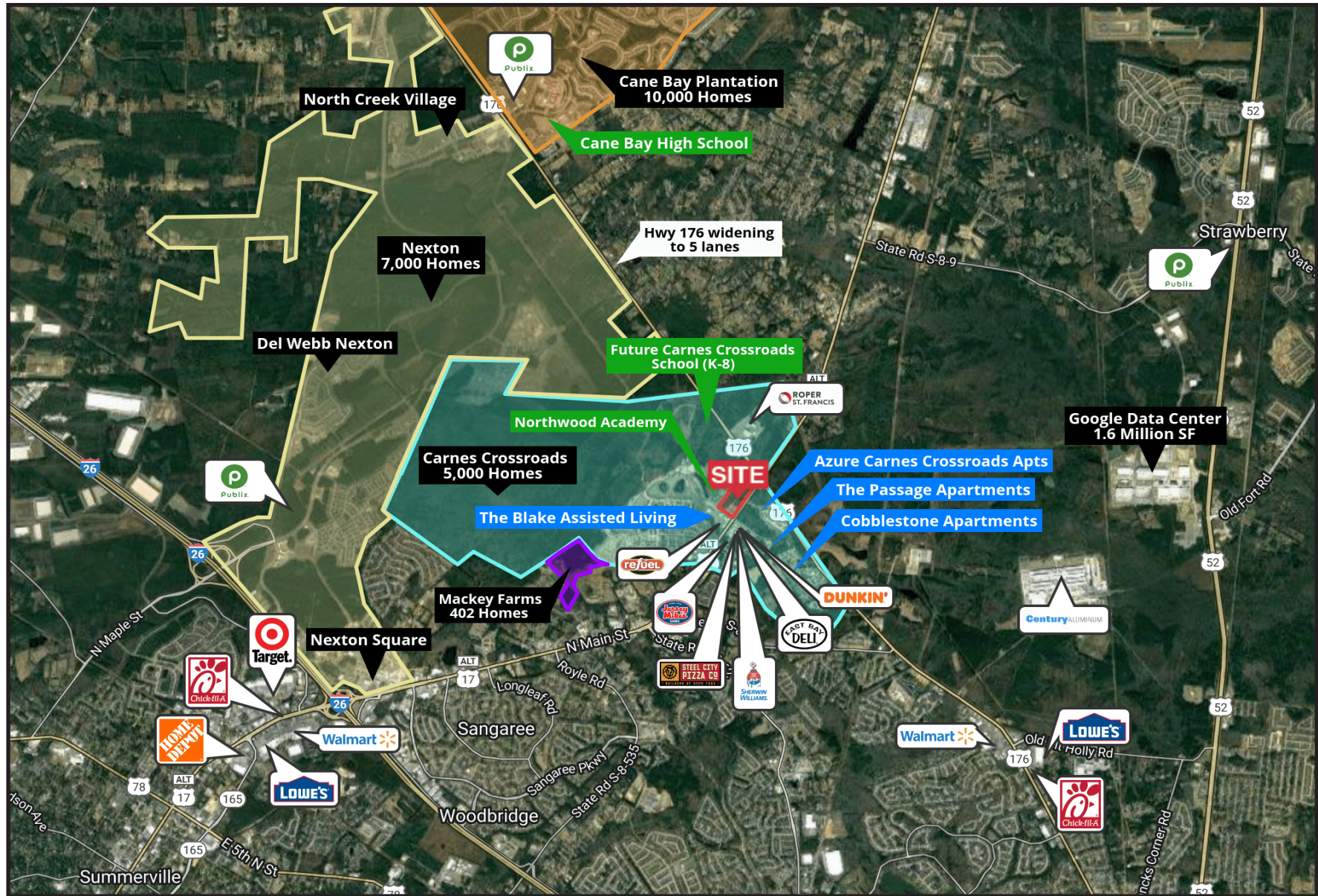


# AREA MAP





# AREA MAP





# CONTACT:

**WILL SHERROD, CCIM**

**843.364.3796**

**wsherrod@naicharleston.com**

**WELLES WORTHEN**

**770.905.9918**

**wworthen@naicharleston.com**

*DISCLAIMER: The information contained herein has been given to us by the owner of the property or other sources we deem reliable. We have no reason to doubt its accuracy, but we do not guarantee it. All information should be verified prior to purchase or lease.*



Exclusively marketed by:

**NAI Charleston**