

# 600 S Public Lafayette, CO

Affordable Enclosed Yard Space

1,000—64,380 SF

## Enclosed Yard Space For Lease!

### Expansive Enclosed Space:

Flexible configurations for a wide variety of storage or light assembly uses like landscaping, equipment storage, garden supplies, construction materials, RV/Boat, vehicles, etc.

### Easy Accessibility:

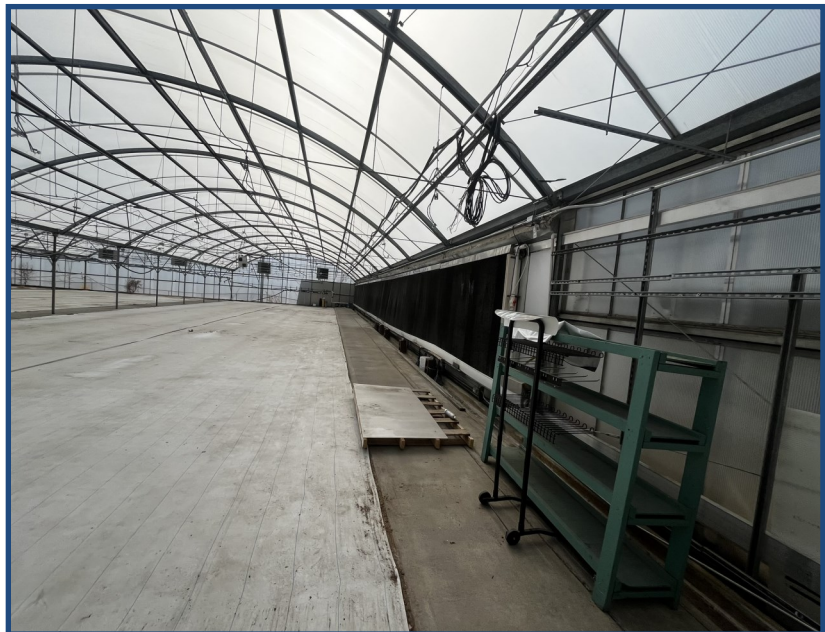
Quick access to major roads, including Highway 287 and Baseline Road

### Flexible Terms:

Month-to-month or longer term leases available

### Specifications:

Concrete floors, overhead door, and high greenhouse ceilings, make for secure enclosed yard storage or light assembly uses



**TEBO**  
PROPERTIES

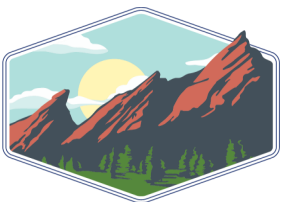
Contact us for more information:  
[leasing@teboproperties.com](mailto:leasing@teboproperties.com)  
303-447-8326  
[www.TEBOproperties.com](http://www.TEBOproperties.com)



**600 S Public Road, Lafayette, CO**



Square Footage	Asking Price
1,000—64,380	Call for Pricing!



**TEBO**  
PROPERTIES

Contact us for more information:  
[leasing@teboproperties.com](mailto:leasing@teboproperties.com)  
303-447-8326