

Office | For Lease

**CBRE**

# Laidley Tower

OFFICE SUITES AVAILABLE



500 Lee Street East  
Charleston, WV 25301

Laidley Tower

500 Lee Street East, Charleston, WV 25301



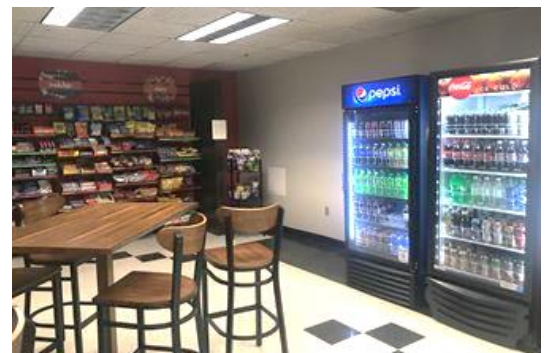
# Class A Office Space

## Located in Charleston's CBD

Multiple tenancy high rise tower with banking facility on site.

Amenities include:

- High-speed internet access
- 24/7 onsite security & keycard entry system
- Micro market
- 549 space parking facility
- Five modernized high-speed elevators
- Elegant atrium lobby renovated in 2020
- Banking facility on site
- Chillers replaced in 2024
- \$1.5 M exterior building upgrades in process (2025)



# 18

Stories of Class A Office Space

# 1984

Year Built

# 2020

Lobby & Market Renovated

## Class A Office Suites Available

2<sup>nd</sup> Floor 1,120 USF

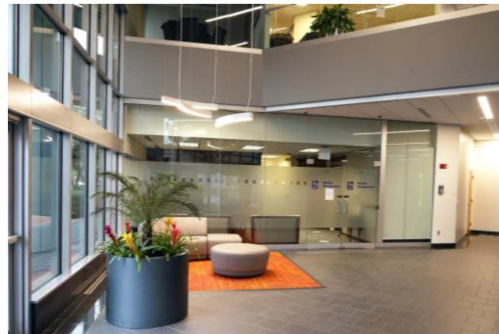
5<sup>th</sup> Floor 12,317 USF

6<sup>th</sup> Floor 12,317 USF

8<sup>th</sup> Floor 6,326 USF

9<sup>th</sup> Floor, Suite 950 3,145 USF

11<sup>th</sup> Floor, Suite 1140 1,394 USF

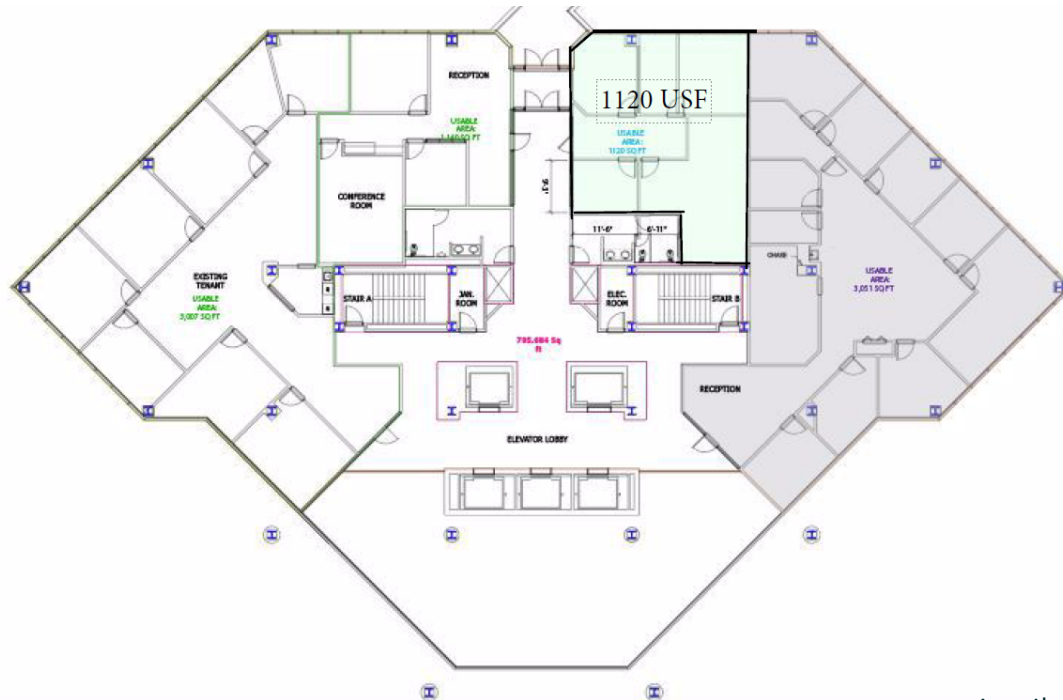


2024 Demographics	One Mile	Three Miles	Five Miles
Population	6,141	43,123	63,669
Households	3,227	19,582	29,260
Average Household Income	\$66,698	\$92,359	\$93,665
Businesses	1,775	3,075	4,205



## Class A Suites Available

Available 2<sup>nd</sup> Floor  
1,120 USF



Available 5th Floor:  
12,317 USF

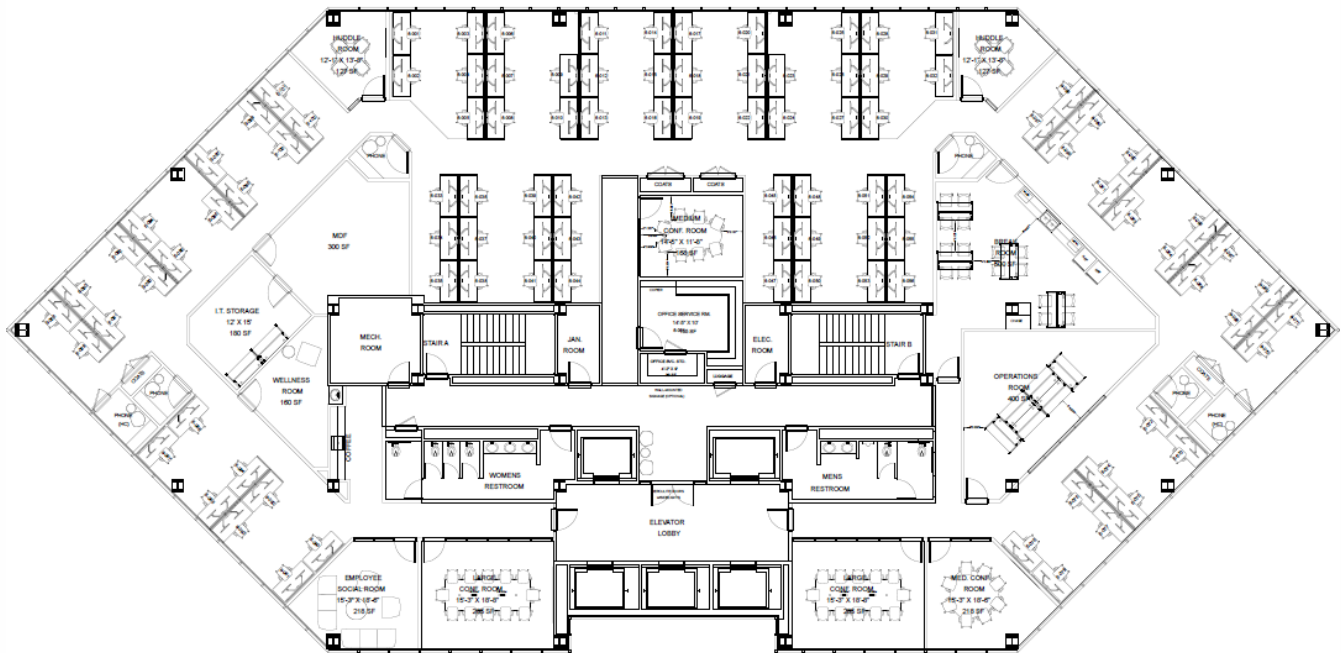


## Laidley Tower

### Class A Suites Available

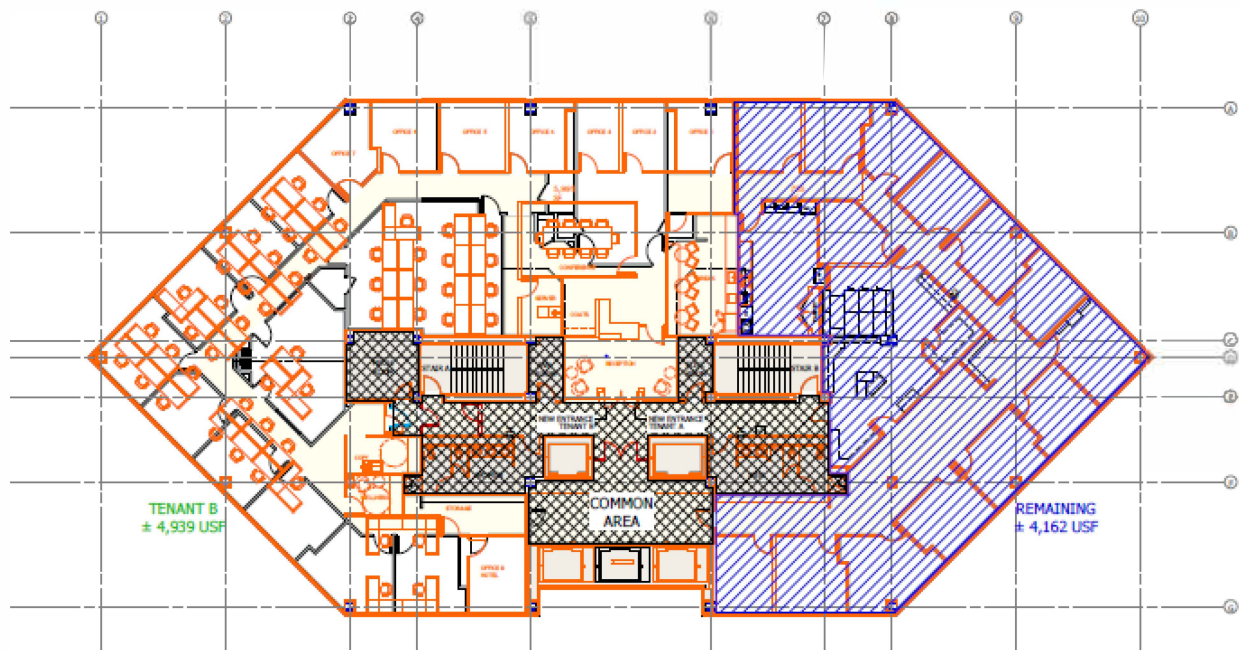
Available 6<sup>th</sup> Floor:

12,317 USF



Available 8th Floor:

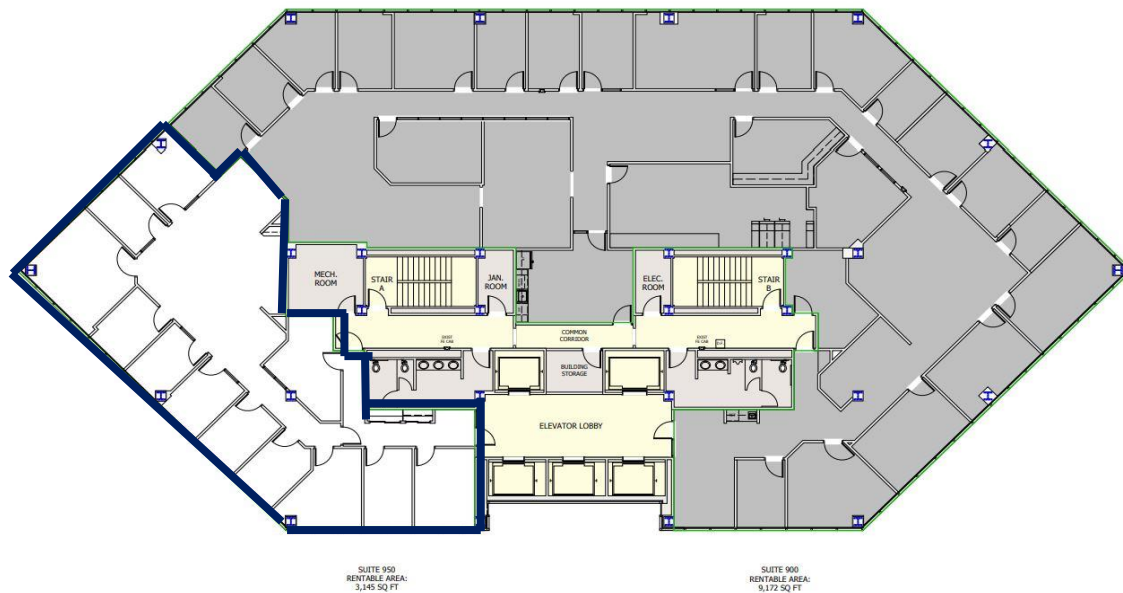
6,326 USF



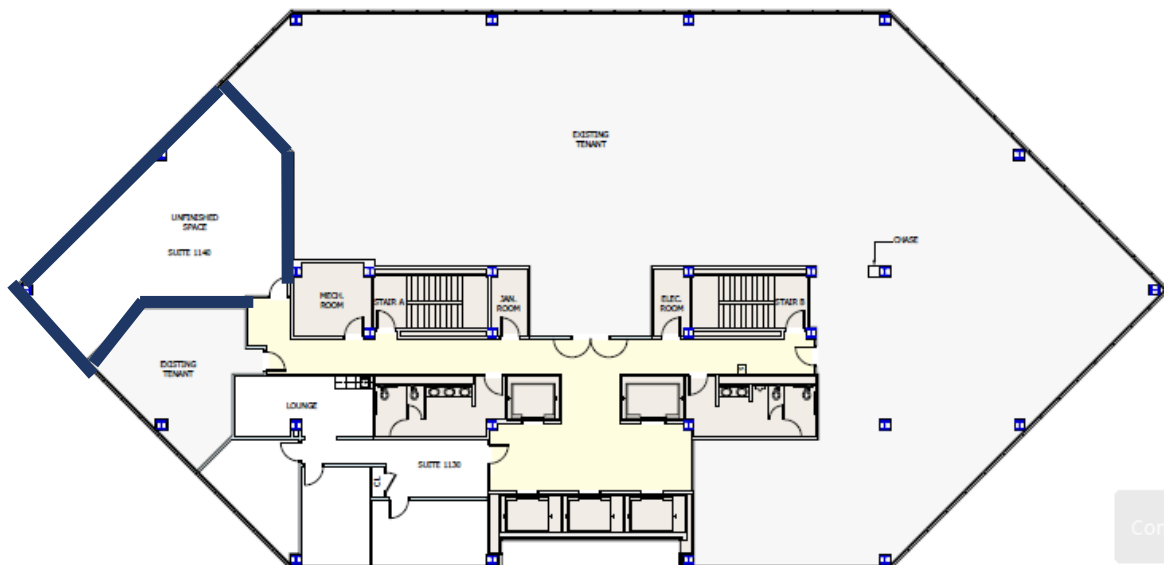
## Laidley Tower

### Class A Suites Available

Available 9<sup>th</sup> Floor:  
Suite 950 3,145 USF



Available 11<sup>th</sup> Floor:  
Suite # 1140- 1,394 USF (Shell)



Comm



## Laidley Tower

Class A Suites Available





## Laidley Tower

### Class A Suites Available



**DeWitt Blundon**  
Associate Broker  
+1 304 546 2581  
[dewitt.blundon@cbre.com](mailto:dewitt.blundon@cbre.com)

**David Durbin**  
Broker  
+1 304 720 8497  
[david.durbin@cbre.com](mailto:david.durbin@cbre.com)  
707 Virginia Street East  
Charleston, WV 25301

© 2024 CBRE, Inc. All rights reserved. This information has been obtained from sources believed reliable but has not been verified for accuracy or completeness. You should conduct a careful, independent investigation of the property and verify all information. Any reliance on this information is solely at your own risk.

