

FOR LEASE



+/- 258 - 2,424 SF OF PRIME OFFICE SPACES AVAILABLE!



**910 FLORIN RD,
SACRAMENTO, CA**

CHASE BURKE
916.705.8132
CHASE@ROMECRE.COM
DRE: 01879336

ANDY JONSSON
916.813.8409
ANDY@ROMECRE.COM
DRE: 02076108

ROME
REAL ESTATE GROUP

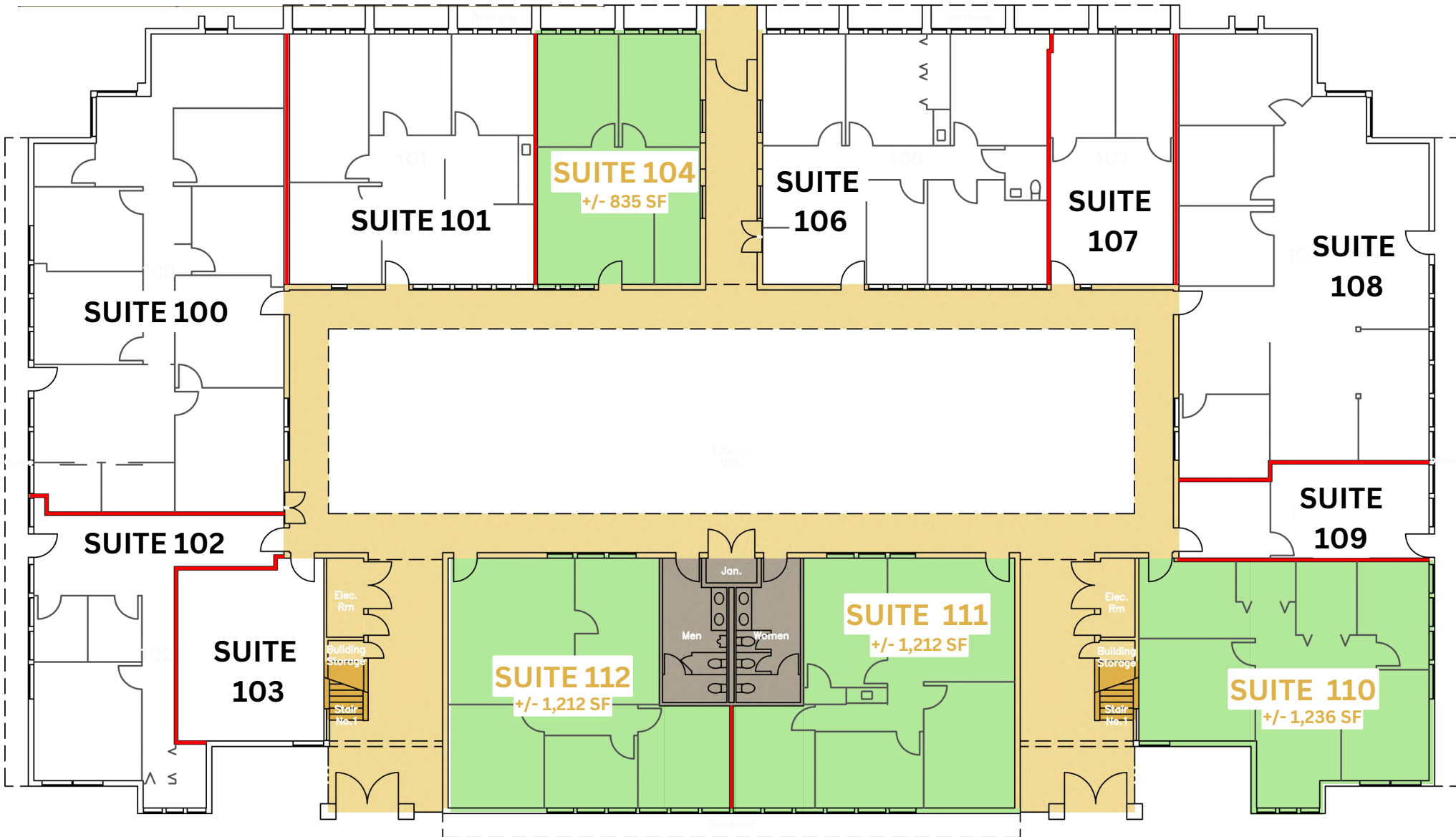
AVAILABLE SUITES

**+/- 258 - 2,424 SF
AVAILABLE**

- **Strategically Located Office Building:** Situated in the Greenhaven community of Sacramento, this office building offers convenient access to major transportation routes, making it an ideal location for businesses.
- **Professional Park-Like Setting:** The property is part of the Greenhaven Office/Medical Plaza, which provides a serene and professional environment, enhancing the work atmosphere for tenants.
- **Medical/Dental Office Specialization:** The building is part of a complex that includes medical office spaces, making it suitable for health and wellness services.
- **Ample Surface Parking:** The complex offers extensive surface parking facilities, ensuring convenience for both tenants and visitors.
- **Convenient Multi-Building Layout:** The property is part of a three-building complex, providing a variety of office space options to suit different business needs.

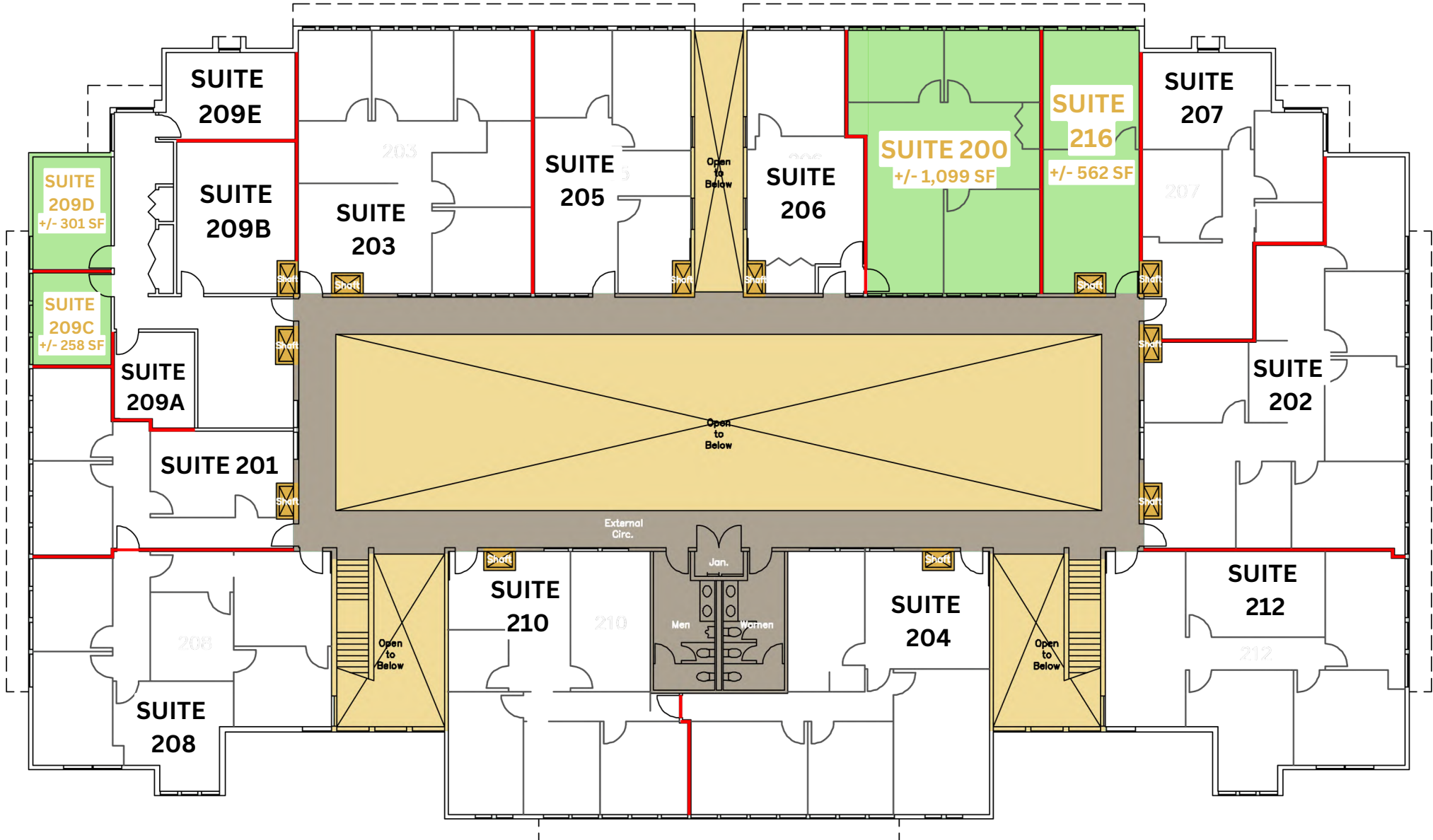
FIRST FLOOR - GREENHAVEN PLAZA

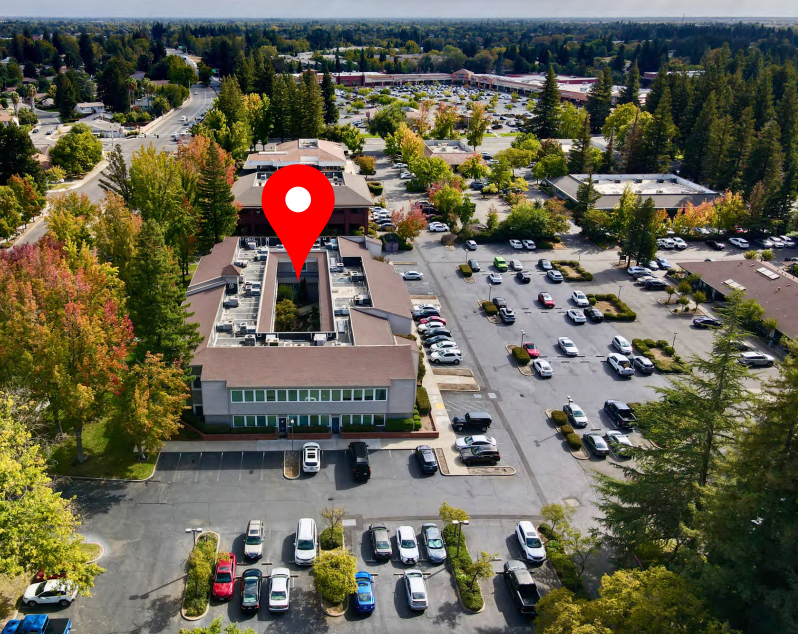
SUITE	SIZE	LEASE RATE
104	835 SF	\$1.95 PSF, FSG
110	1,236 SF	\$1.85 PSF, FSG
111	1,212 SF	\$1.85 PSF, FSG
112	1,212 SF	\$1.85 PSF, FSG



SECOND FLOOR - GREENHAVEN PLAZA

SUITE	SIZE	LEASE RATE
200	1,099 SF	\$1.50 PSF, FSG
209C	258 SF	\$600/mo, FSG
209D	301 SF	\$600/mo, FSG
216	562 SF	\$1,000/mo, FSG





EXTERIOR PICTURES



AERIAL OF NEARBY RETAIL

Sacramento River

AMARPREET S SAINI, DDS INC.
FAMILY AND COSMETIC DENTISTRY

TwoTwenty PHOTOS

Sacramento Delta
Property Management, Inc.
Someone to count on.

M&P
Family Dentistry

VENTING & GAMES

SACRAMENTO RIVER DENTAL GROUP

greenhaven insurance agency

greenhaven DENTAL CARE

Bing Maloney
GOLF COMPLEX

Chevron

BEL AIR

DOLLAR TREE

O'Reilly AUTO PARTS

Starbucks

CALIFORNIA Family Fitness

John F. Kennedy
High School

PROPERTY
LOCATION

Florin Rd.



Smart & Final

CVS pharmacy

Freeport Blvd.

BEL AIR

CVS pharmacy

Nugget MARKETS

9ROUND SPORTS FITNESS

Great Clips

Marshalls

BIG 5 SPORTING GOODS

SUBWAY

RITE AID

THE HOME DEPOT

STAPLES

BR BASKIN-ROBBINS

Tires **LES SCHWAB**

IHOP

DOLLAR TREE

DEMOGRAPHIC SUMMARY REPORT

910 FLORIN RD, SACRAMENTO, CA 95831



POPULATION 2024 ESTIMATE

1-MILE RADIUS 19,895
3-MILE RADIUS 93,387
5-MILE RADIUS 231,436

POPULATION 2029 PROJECTION

1-MILE RADIUS 19,974
3-MILE RADIUS 93,853
5-MILE RADIUS 233,209



HOUSEHOLD INCOME 2024 AVERAGE

1-MILE RADIUS \$123,379.00
3-MILE RADIUS \$106,639.00
5-MILE RADIUS \$99,729.00

HOUSEHOLD INCOME 2024 MEDIAN

1-MILE RADIUS \$96,543.00
3-MILE RADIUS \$82,735.00
5-MILE RADIUS \$74,957.00



POPULATION 2024 BY ORIGIN

	1-MILE RADIUS	3-MILE RADIUS	5-MILE RADIUS
WHITE	6,558	27,410	69,152
BLACK	2,520	13,096	30,110
HISPANIC ORIGIN	3,785	25,132	73,301
AM.INDIAN & ALASKAN	184	1,188	3,367
ASIAN	5,879	23,206	48,948
HAWAIIAN/PACIFIC ISLAND	138	1,707	4,391
OTHER	4,616	26,780	75,467

CONTACT US!

TO LEARN MORE ABOUT THESE OFFICE SUITES



Chase Burke

**PARTNER | RETAIL BROKERAGE
AND INVESTMENT SALES**

916.705.8132

chase@romecre.com

DRE: 01879336



(916) 932-2199



ANDY@ROMECPRE.COM

CHASE@ROMECPRE.COM



@ROMECPREGROUP



101 PARKSHORE DRIVE, SUITE 100, FOLSOM, CA 95630

2901 K STREET, SUITE 306, SACRAMENTO, CA 95816



Andy Jonsson

**PARTNER | RETAIL BROKERAGE
AND INVESTMENT SALES**

916.813.8409

andy@romecre.com

DRE: 02076108

