



**1122** WASHINGTON BLVD  
LOS ANGELES, CA

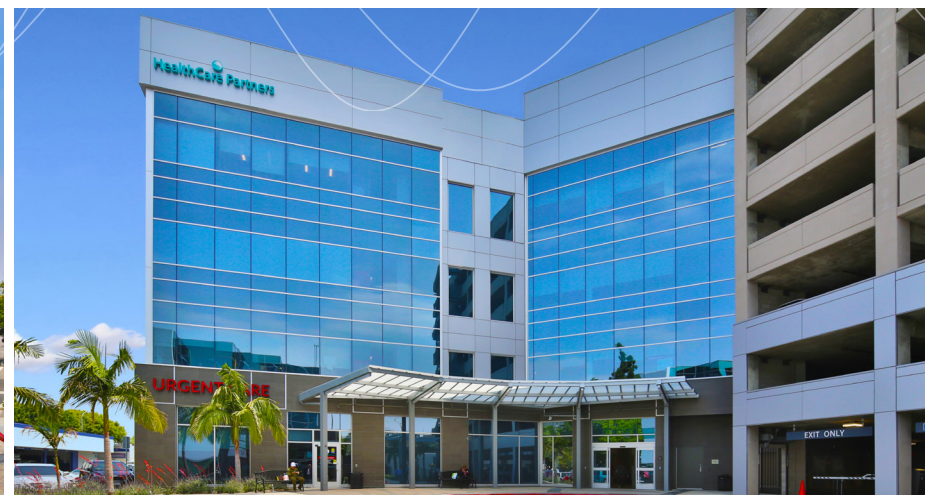


**CBRE**



# PROPERTY HIGHLIGHTS

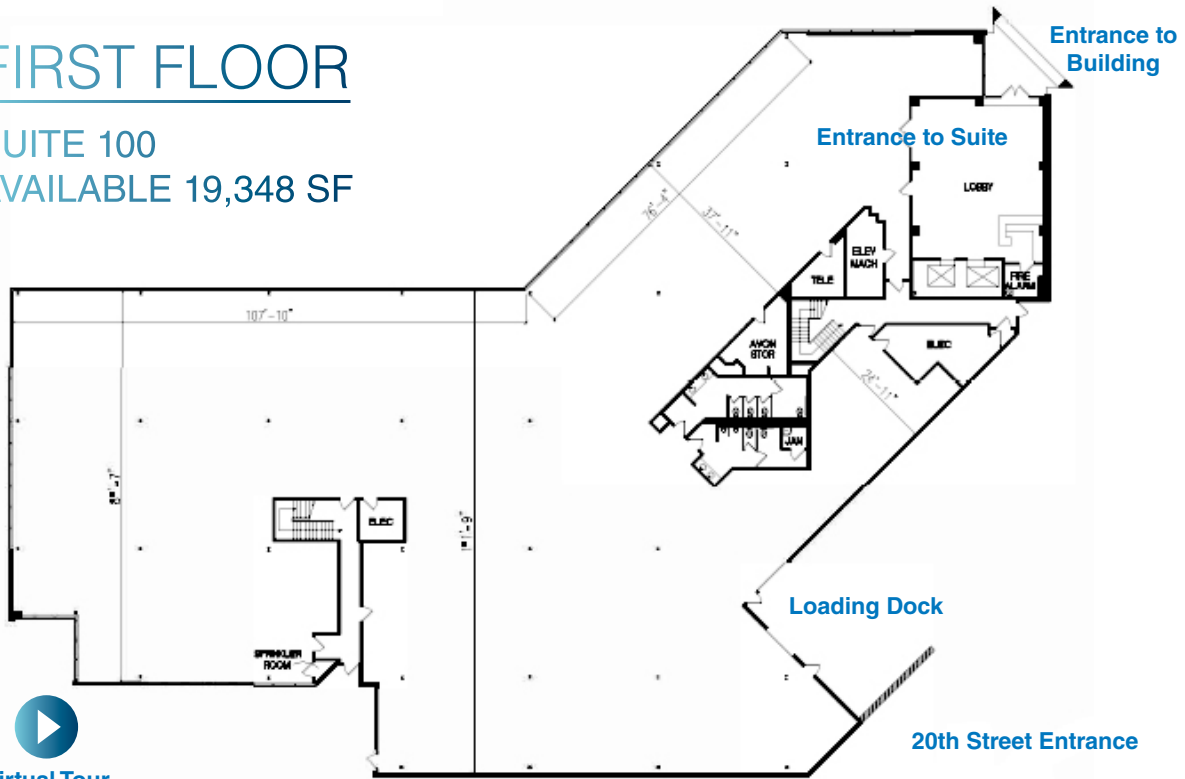
- Suite 100  
±19,348 rentable square feet of area
- Suite 340  
±2,188 SF rentable square feet of area
- Entire ground floor space available
- Modern steel frame construction
- Efficient design and building systems
- Part of the Ostium Medical Campus
- Expansion possibilities
- Located in an enterprise zone
- Easy access to 10 & 110 Freeways
- Building signage opportunity against 10 Freeway
- Adjacent to Interstate 10, allowing for prime visibility with a 340,000 daily car count
- Walk Score 90 / Transit Score 70 / Bike Score 73
- Located ±2 miles from DTLA
- Onsite parking available (4:1,000) with covered parking available in 9 level, ±450 stall parking garage



# FLOOR PLANS

## FIRST FLOOR

SUITE 100  
AVAILABLE 19,348 SF



Virtual Tour

## SECOND FLOOR

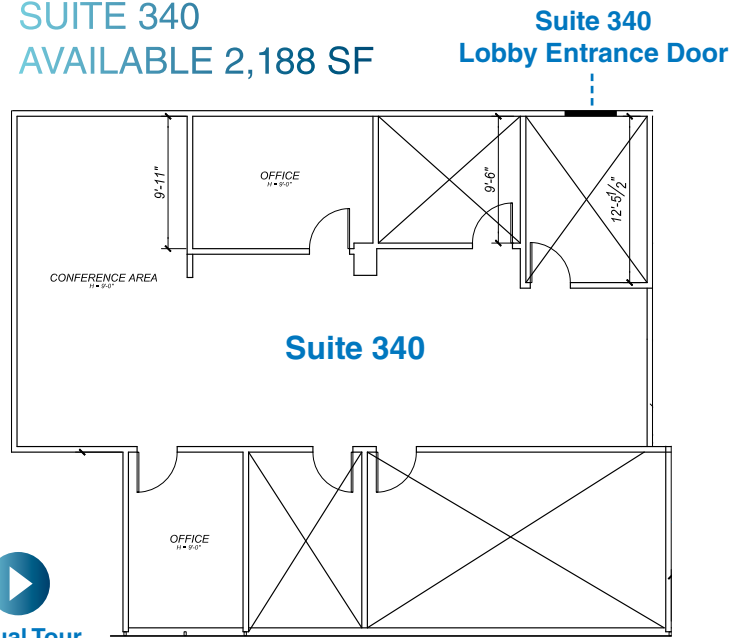
SUITE 202  
AVAILABLE 1,200 SF



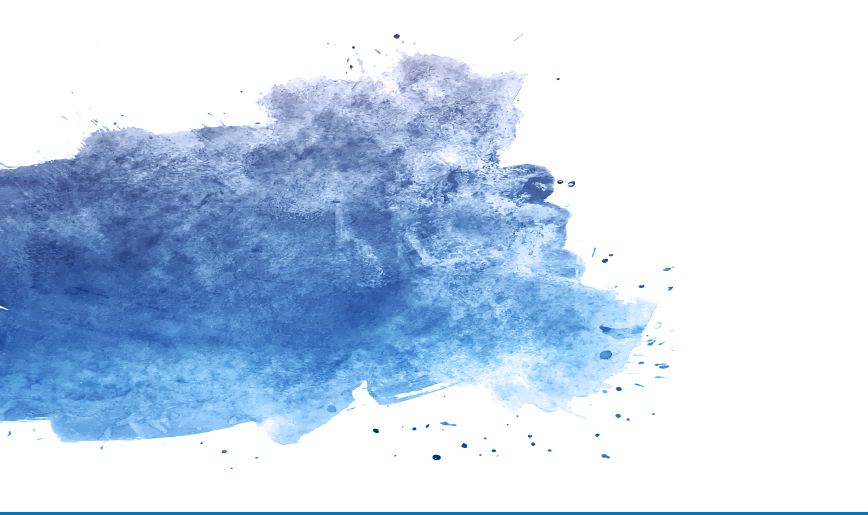
Virtual Tour

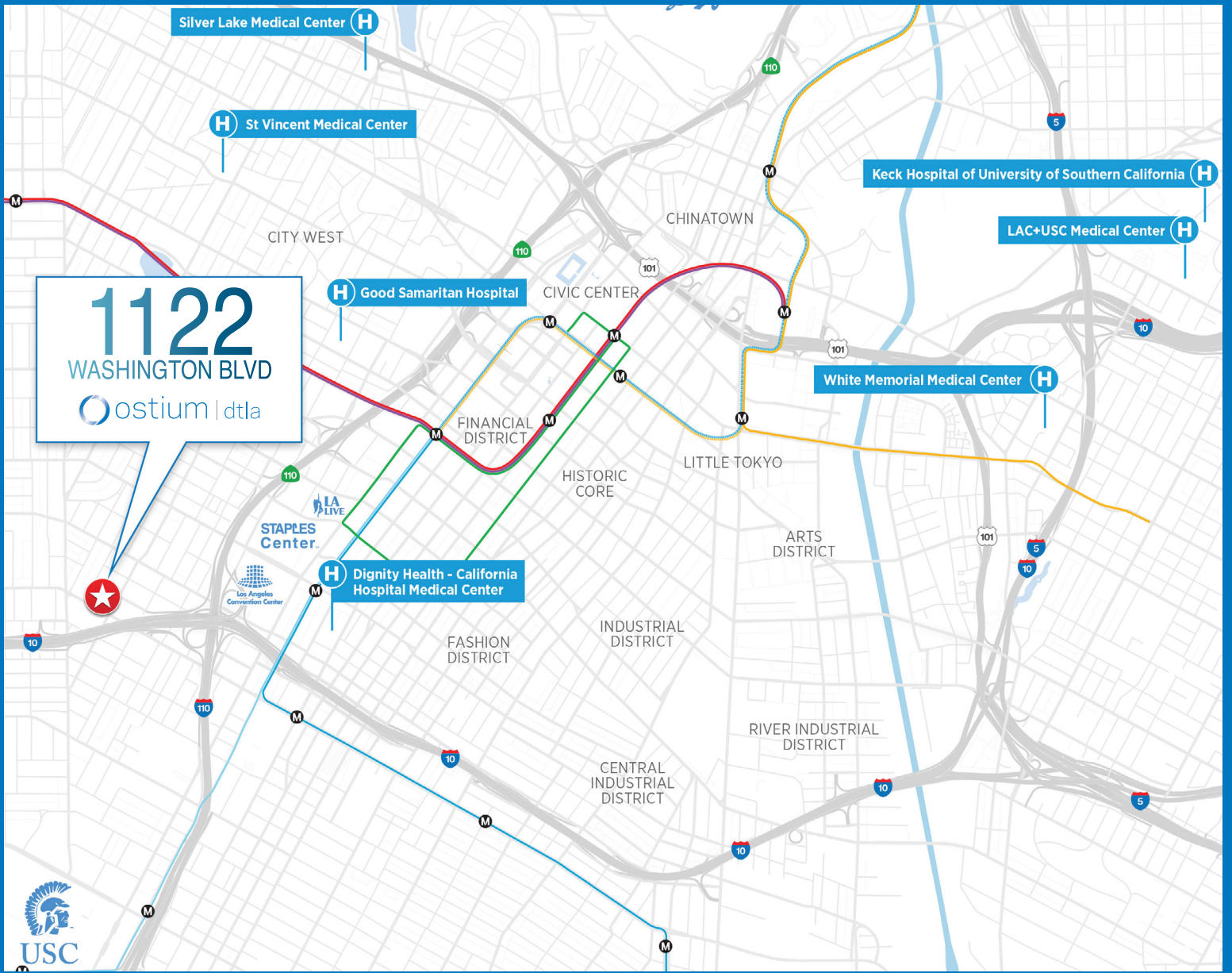
## THIRD FLOOR

SUITE 340  
AVAILABLE 2,188 SF



Virtual Tour







Part of the



ostium | dtla

MEDICAL CAMPUS

[VIEW THE WEBSITE](#)

[DOWNLOAD BROCHURE](#)

**CBRE**

**ANGIE WEBER**

+1 818 502 6750  
angie.weber@cbre.com  
Lic. 01015031

**DANA NIALIS**

+1 818 502 6774  
dana.nialis@cbre.com  
Lic. 01947265



**SID P. EWING**

+1 213 861 3322  
sid.ewing@colliers.com  
Lic. 01179264

© 2020 CBRE, Inc. All rights reserved. This information has been obtained from sources believed reliable, but has not been verified for accuracy or completeness. You should conduct a careful, independent investigation of the property and verify all information. Any reliance on this information is solely at your own risk. CBRE and the CBRE logo are service marks of CBRE, Inc. All other marks displayed on this document are the property of their respective owners, and the use of such logos does not imply any affiliation with or endorsement of CBRE. Photos herein are the property of their respective owners. Use of these images without the express written consent of the owner is prohibited.