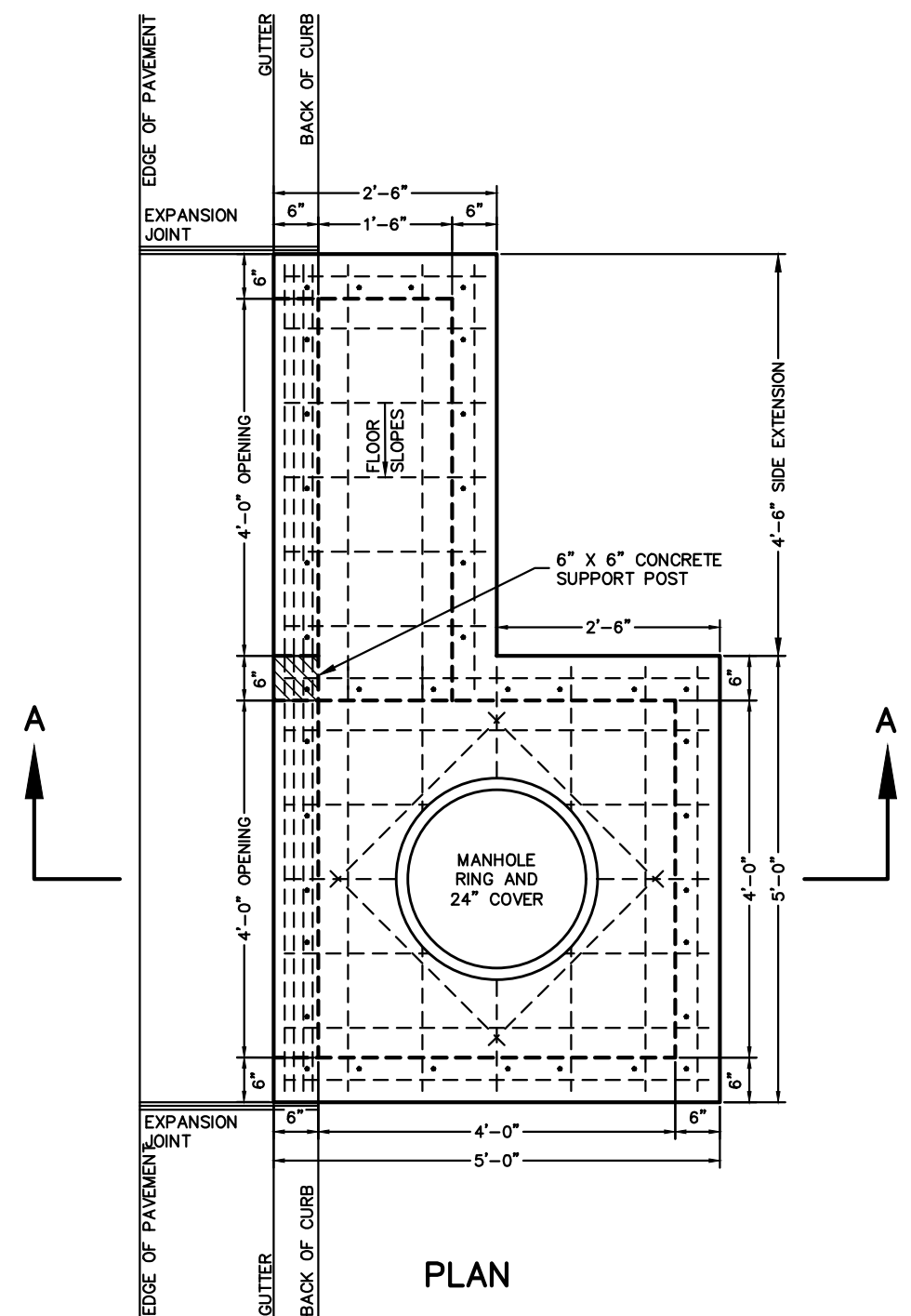
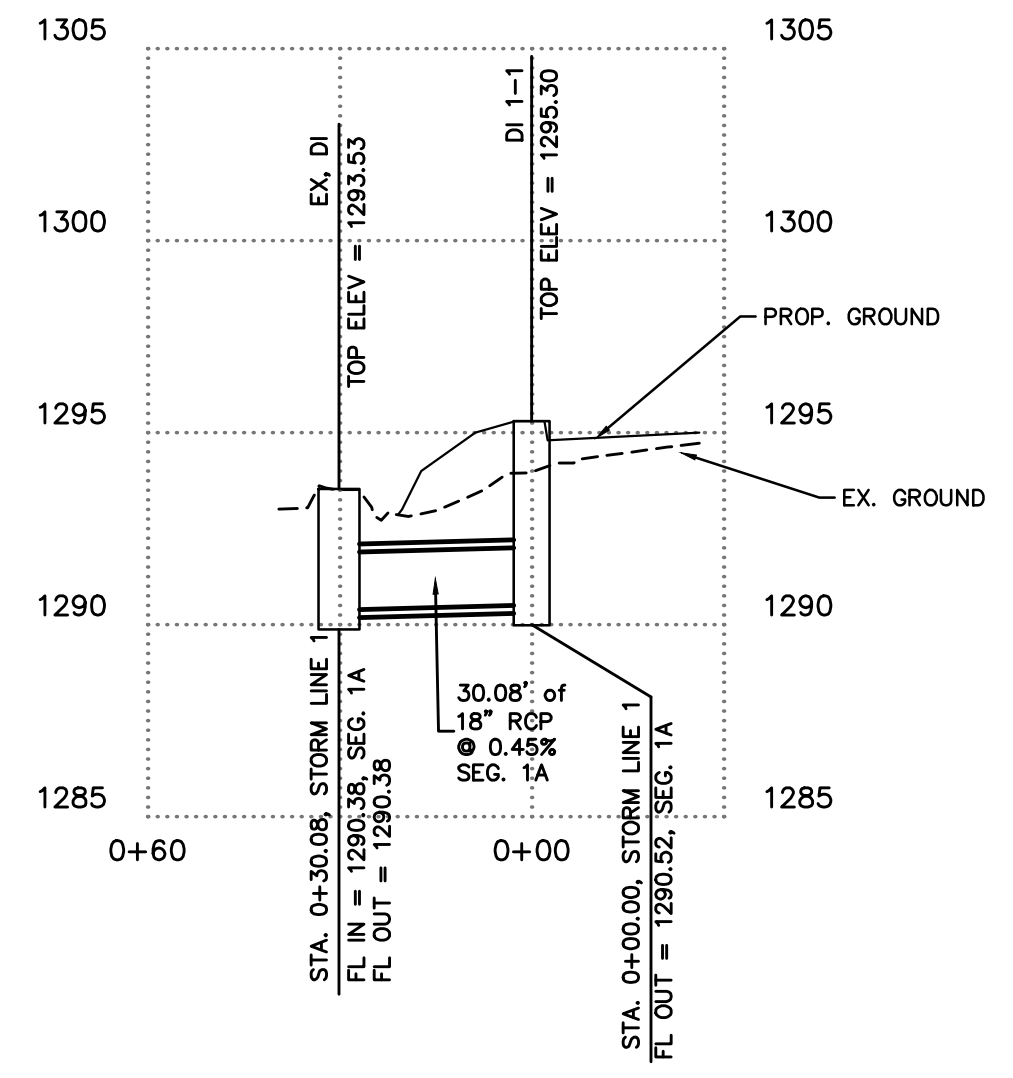
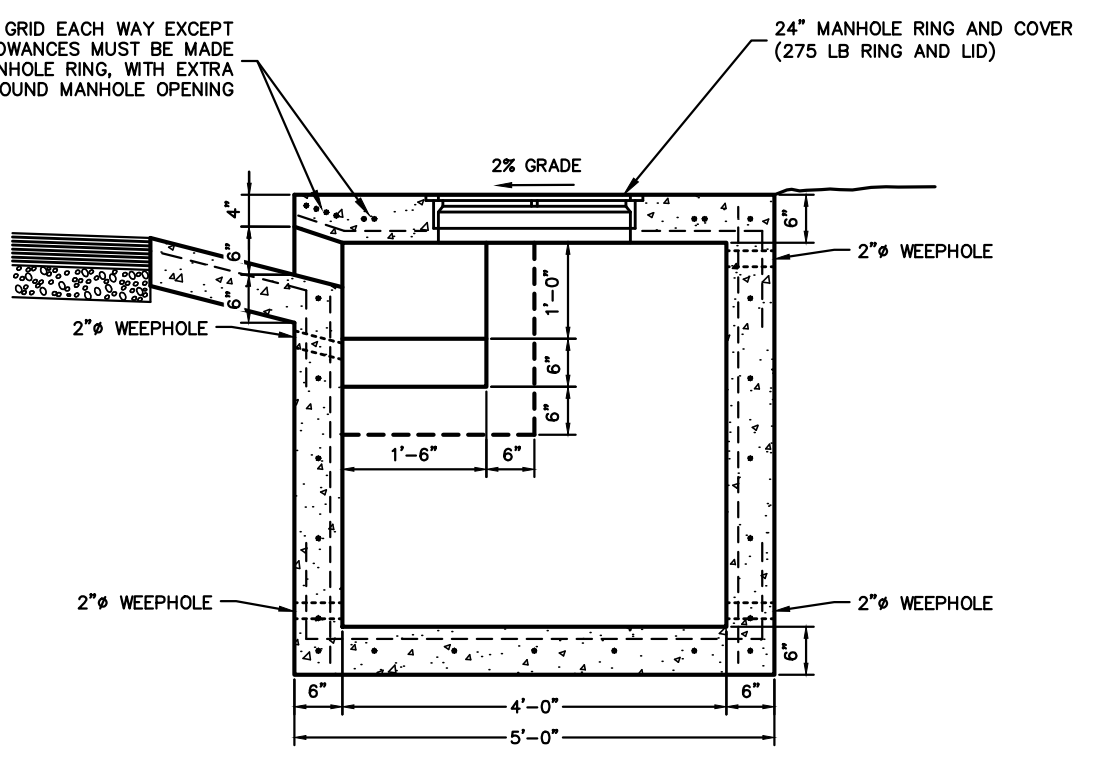
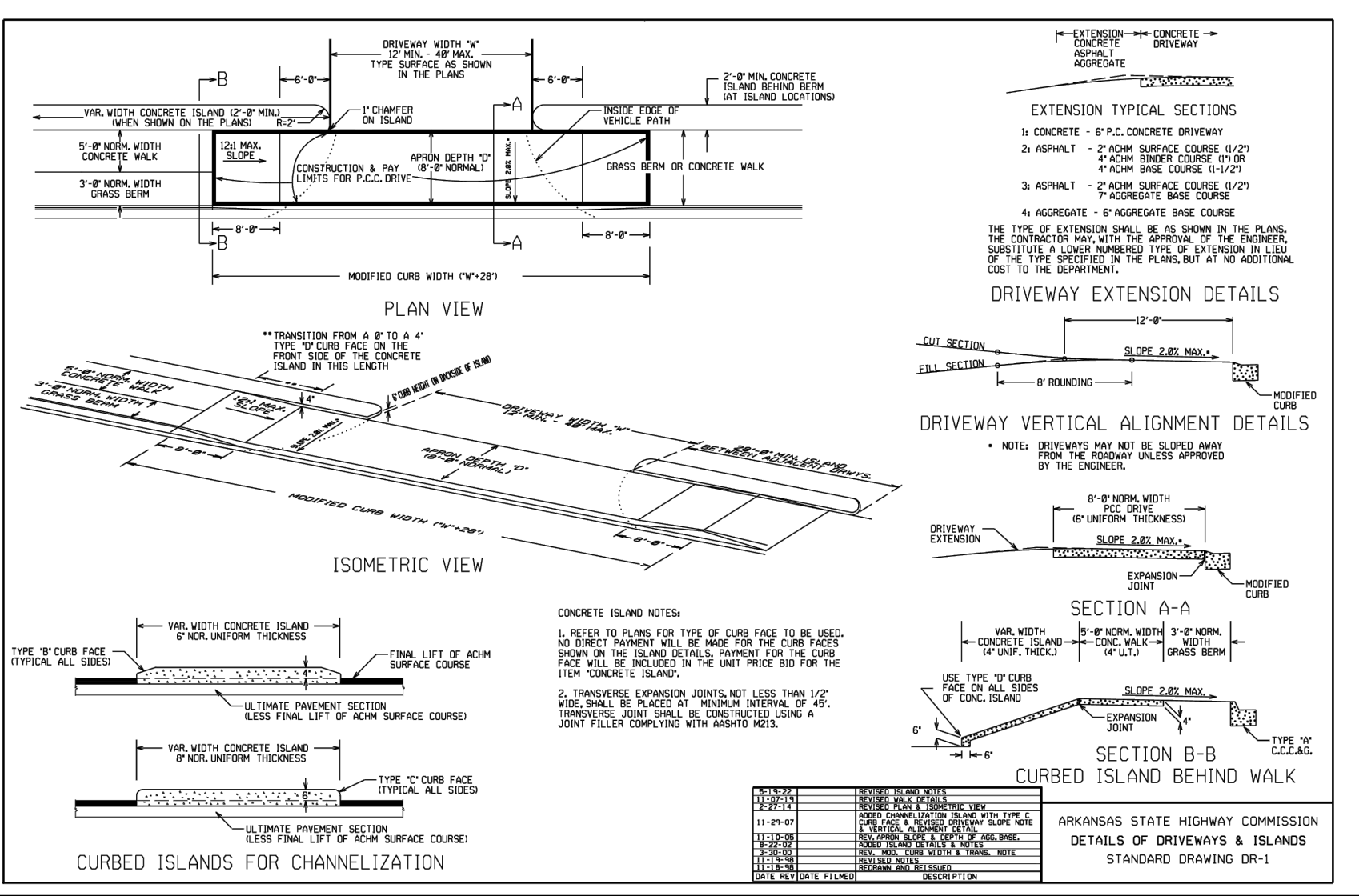


STORM LINE 1

SCALES:
HORIZONTAL: 1" = 30'
VERTICAL: 1" = 5'

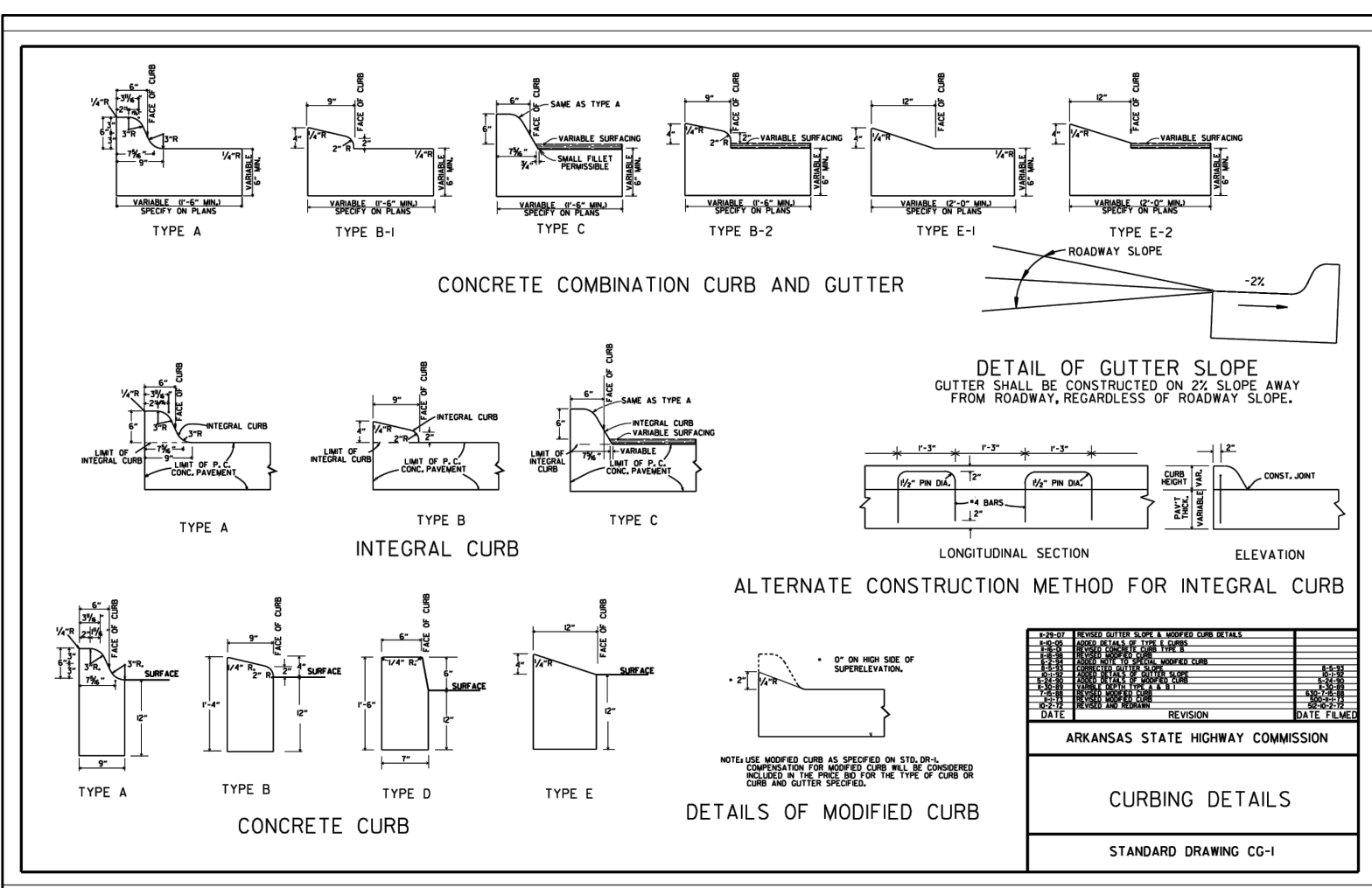
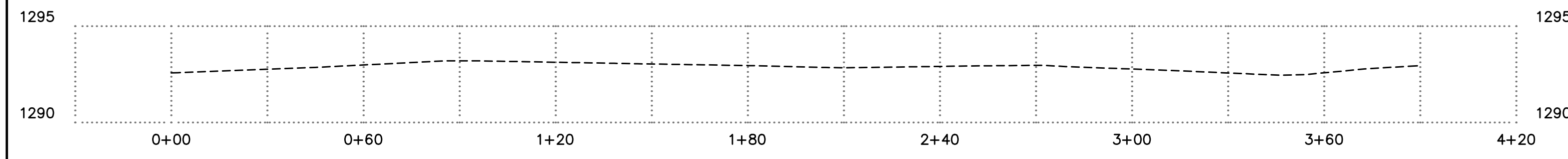


- NOTES:**
1. ALL EXPOSED CORNERS TO HAVE 3/4" CHAMFER.
 2. ALL REINFORCEMENT BARS SHALL BE GRADE 60 AND SHALL HAVE A MINIMUM 1-1/2" COVER UNLESS OTHERWISE NOTED.
 3. CURB INLET BACK OPENING LOCATIONS SHALL BE DETERMINED IN THE FIELD BY THE ENGINEER.
 4. WHEN AN INLET IS PLACED ADJACENT TO CONCRETE PAVEMENT, THE GUTTER DEPRESSION SHALL BE FORMED IN CONCRETE PAVEMENT.
 5. PIPES MAY ENTER BOX FROM ANY ANGLE OF ELEVATION AS DIRECTED BY THE ENGINEER; REINFORCING BARS SHALL BE CUT TO CLEAR PIPE BY 1-1/2".
 6. THE EXPANSION JOINT SHALL HAVE A THICKNESS OF 1-1/2" AND CONFORM TO AASHTO M213.
 7. REFER TO PLAN AND PROFILE SHEETS TO DETERMINE EXTENSIONS AND SIZE (IF ANY) ACCOMPANYING DROP INLETS.
 8. EXTENSIONS WITH LENGTHS DESIGNATED ON THE PLANS EXCEEDING 8'-0" SHALL HAVE THE SAME INLET DEPTH DIMENSIONS AS STATED ON DETAILS UNLESS OTHERWISE NOTED.
 9. CONCRETE FOR RECTANGULAR DROP INLETS SHALL BE CLASS A, 3000 PSI, 5.5 BAG MIX WITH 4-7% AIR ENTRAINMENT.
 10. ALL REINFORCING TO BE #5 BAR GRID @ 10" O.C., E-W, EXCEPT WHERE ALLOWANCES MUST BE MADE FOR PIPES, OPENING, OR MANHOLE RINGS.
 11. MECHANICALLY COATED STEEL STEPS ARE TO BE INSTALLED IN ALL DROP INLETS AND JUNCTION BOXES WITH A DEPTH OF 4'-0" OR GREATER. STEP SPACING TO BE 12".
 12. BOTTOM OF DRAINAGE BOX TO BE AT 0.5% MINIMUM SLOPE FROM INLET TO OUTLET.



SECTION A-A
TYPICAL DROP INLET
NOT TO SCALE

EXISTING GRADE



LEGEND	
JB	= JUNCTION BOX
DI	= DROP INLET
GI	= GRATED INLET
AI	= AREA INLET
OS	= OUTLET STRUCTURE
FES	= FLARED END SECTION
HW	= HEADWALL
AS	= AQUA SWIRL
RCP	= REINFORCED CONCRETE PIPE
HERCP	= HORIZONTAL ELLIPTICAL REINFORCED CONCRETE PIPE
HDP	= HIGH DENSITY POLYETHYLENE

GRADING LEGEND	
---	EXISTING CONTOUR
---	PROPOSED CONTOUR
●	EXISTING SPOT ELEVATION
●	PROPOSED SPOT ELEVATION

NOTES:

- 1) ALL SPOT ELEVATIONS ARE AT THE FLOWLINE OF THE GUTTER UNLESS OTHERWISE NOTED.

*ALL RCP SHALL BE CLASS 3 UNLESS OTHERWISE SPECIFIED