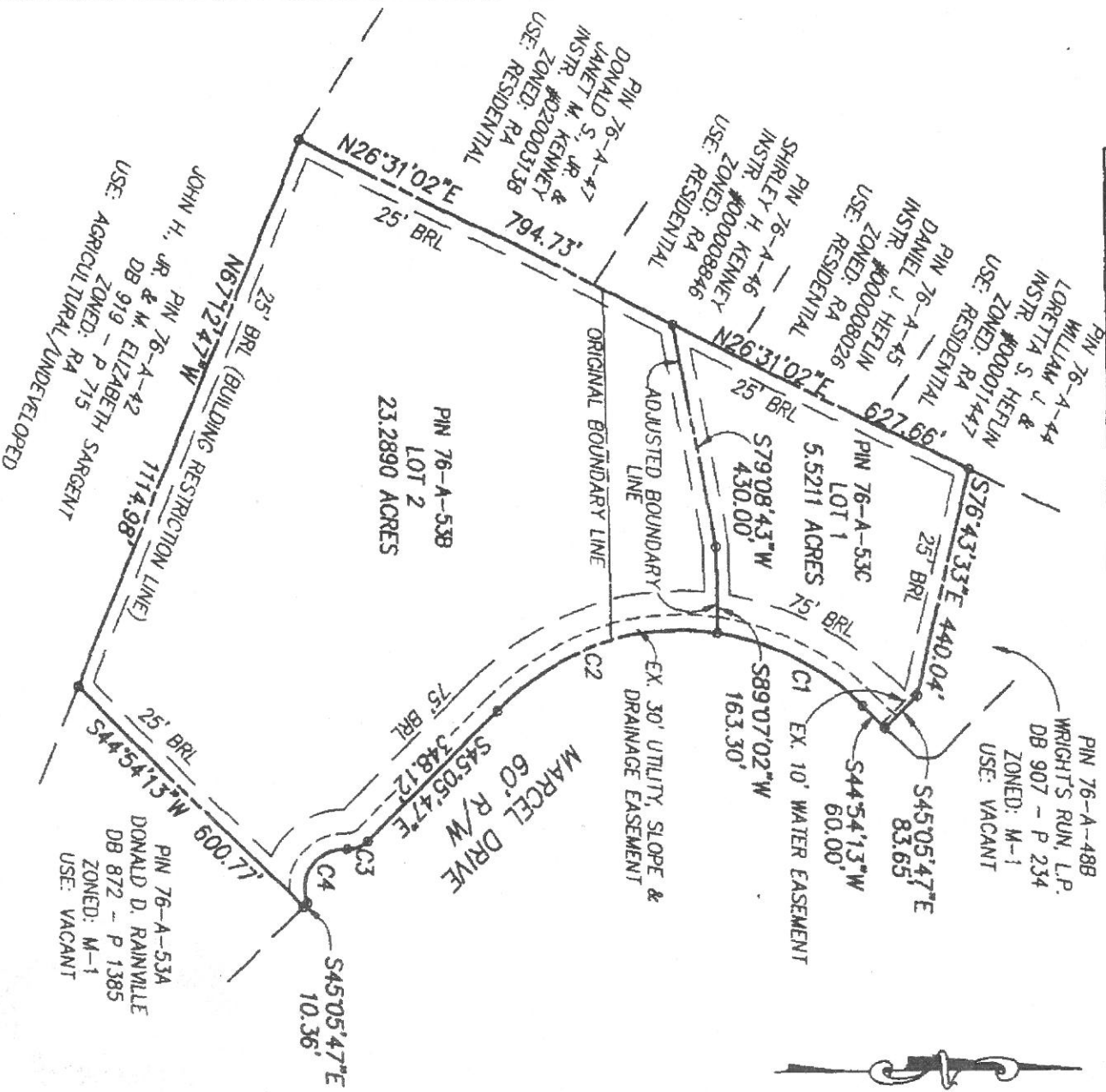


CURVE	RADIUS	LENGTH	TANGENT	CHORD	BEARING	DELTA
C1	500.00'	314.14'	162.45'	309.00'	S26°54'18"W	35°59'50"
C2	500.00'	471.26'	254.78'	454.01'	S18°05'42"E	54°00'10"
C3	50.00'	43.81'	23.43'	42.43'	S19°59'32"E	50°12'29"
C4	75.00'	152.67'	121.51'	127.64'	S53°12'12"E	116°37'48"

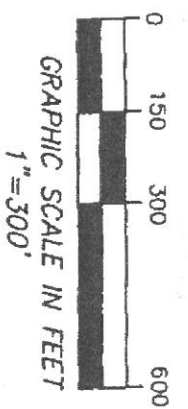


DB 876 - - P 1068

PIN 76-A-53C
 LOT 1
 WRIGHT'S RUN, L.P.
 5.5211 ACRES (ADJUSTED AREA) 23.2890 ACRES (ADJUSTED AREA)
 8.0542 ACRES (ORIGINAL AREA) 20.7559 ACRES (ORIGINAL AREA)
 DB 876 - P 1064
 ZONED: M-1
 USE: VACANT

PIN 76-A-53B
 LOT 2
 JOUAN, INC.
 5.5211 ACRES (ADJUSTED AREA) 23.2890 ACRES (ADJUSTED AREA)
 8.0542 ACRES (ORIGINAL AREA) 20.7559 ACRES (ORIGINAL AREA)
 DB 872 - P 657
 ZONED: M-1
 USE: INDUSTRIAL

BOUNDARY LINE ADJUSTMENT
 BETWEEN THE LANDS OF
 WRIGHT'S RUN, L.P.
 AND
 JOUAN, INC.
 SHAWNEE MAGISTERIAL DISTRICT
 FREDERICK COUNTY, VIRGINIA



DATE: 21 MAY 2002 SCALE: 1"=300' SHEET 2 OF 2

Marsh & Legge Land Surveyors, P.L.C.
 560 NORTH LOUDOUN STREET ~ WINCHESTER, VIRGINIA 22601
 PHONE (540) 667-0488 ~ FAX (540) 667-0489 ~ office@marshandlegge.com

DRAWN BY: HH
 DWG NAME: 104127

0266