



4765 Spring Ave., Clearwater, FL 33762

For Sale or Lease | Functional Warehouse
with Secure Yard – Pinellas Park, FL

±4,559 SF freestanding warehouse features approximately 1,500 SF of clear-span warehouse space, with an additional 2,559 SF of covered canopy/loading area—ideal for sheltered operations or storage.

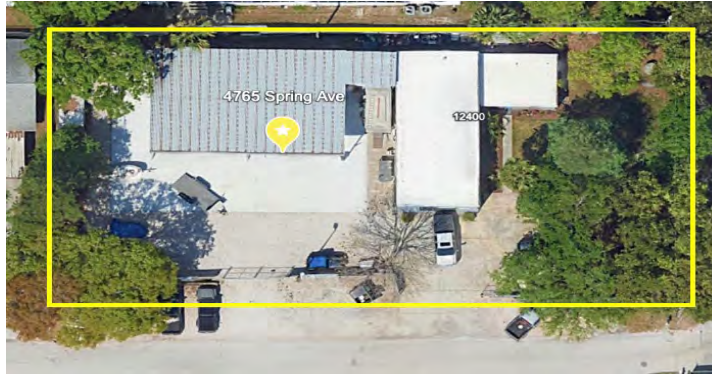
The building sits on a fully fenced 0.45-acre lot, offering ample concrete-paved yard space for outdoor storage, equipment staging, or fleet parking. A new roof was installed in 2022, and the pre-engineered metal construction ensures long-term durability and low maintenance

Thomas B. Grandoff
813.299.0399
tgrandoff@mahrcompany.com



TMC | Based in Tampa Bay Florida | Statewide Emphasis | National Network

Highlights



Key Features:

- ±1,500 SF clear-span warehouse
- ±2,559 SF covered canopy/loading area
- 0.45-acre lot with gated, secured yard
- Fully fenced with concrete paving throughout
- Roll-up access for easy loading/unloading
- Restrooms
- Zoned for light industrial use
- Excellent access to US-19, I-275, and major distribution routes
- Central Pinellas County location in established industrial zone

Ideal for contractors, trades, logistics, or any business in need of secure yard space and functional warehouse capabilities.

Map



Available for Immediate Sale or Lease Contact for Details and Tour Scheduling

Thomas B. Grandoff

813.299.0399

tgrandoff@mahrcompany.com



Based in Tampa Bay Florida | Statewide Emphasis | National Network

The presentation of this property is subject to errors, omission, change of price or withdrawal without notice.