



The Office Park of Palatine

Office Space for Rent
200 to 20,000 Square Feet

The office park of Palatine is comprised of several beautiful office buildings perfect for any business needing office space.

Property Amenities

- Elevator
- ADA Accessible
- Recycling Service
- Security Cameras
- Easy Access to IL-53
- Windows that Open
- 24 Hour - 7 Day Access
- Great Cell Phone Reception
- Energy Efficient Improvements
- High Speed Internet Options [DSL, Cable, Comcast, Fiber]
- Tenant Controlled Temperature
- Walking distance to Palatine Public Library, Chamber of Commerce, Police Station & Mariano's

For over twenty years, Moats Office Properties has owned and operated office buildings in Chicago's Northwest Suburbs. We are a family owned and operated business and strive for the best in customer satisfaction.

**Amenities Vary by Building*



PO Box 1189
Palatine, IL 60078

MOATS
OFFICE PROPERTIES

Office: 847-359-2121
Cell: 847-363-9700



The Office Park of Palatine



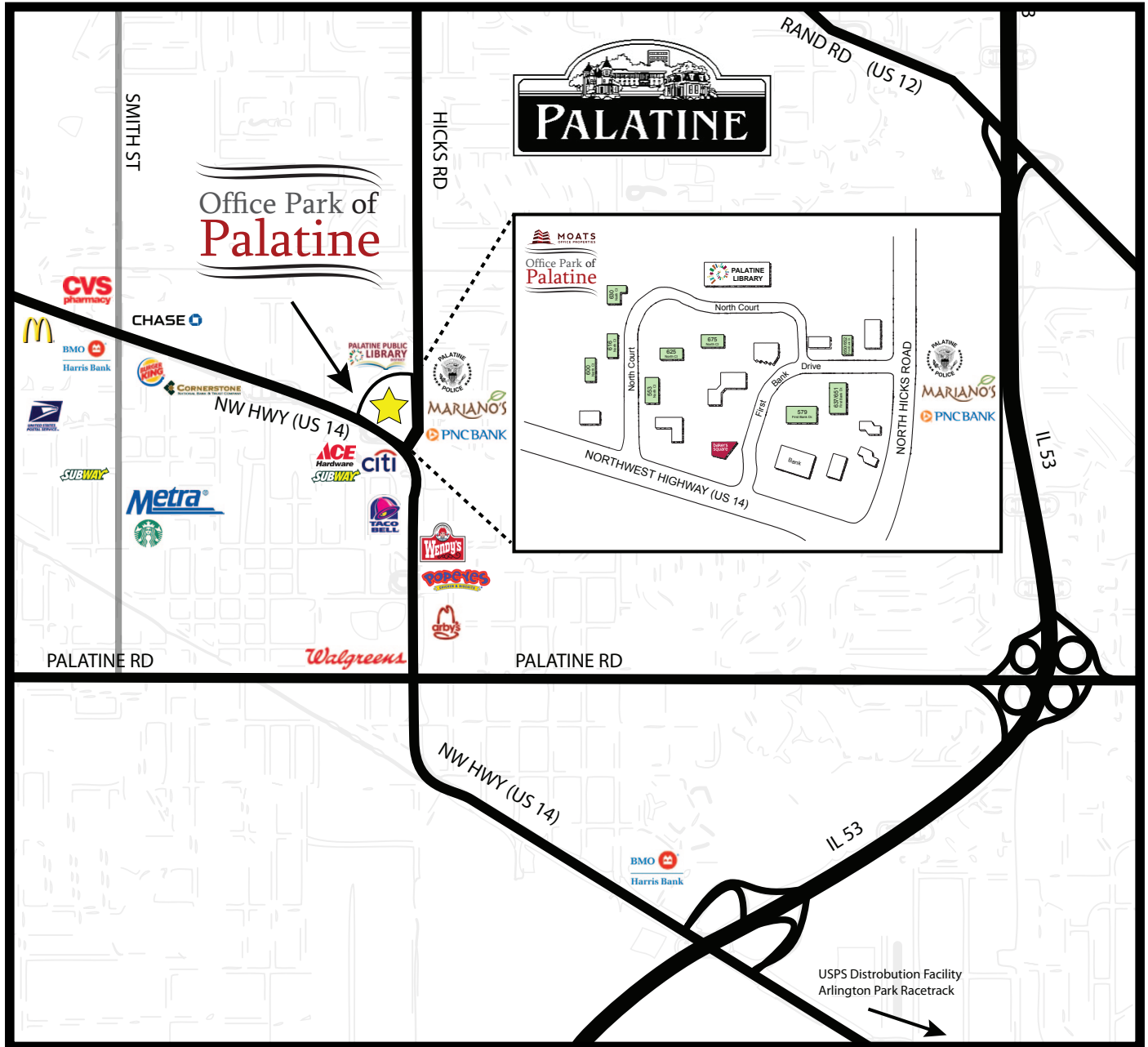
PO Box 1189
Palatine, IL 60078

MOATS
OFFICE PROPERTIES

Office: 847-359-2121
Cell: 847-363-9700



The Office Park of Palatine



PO Box 1189
Palatine, IL 60078

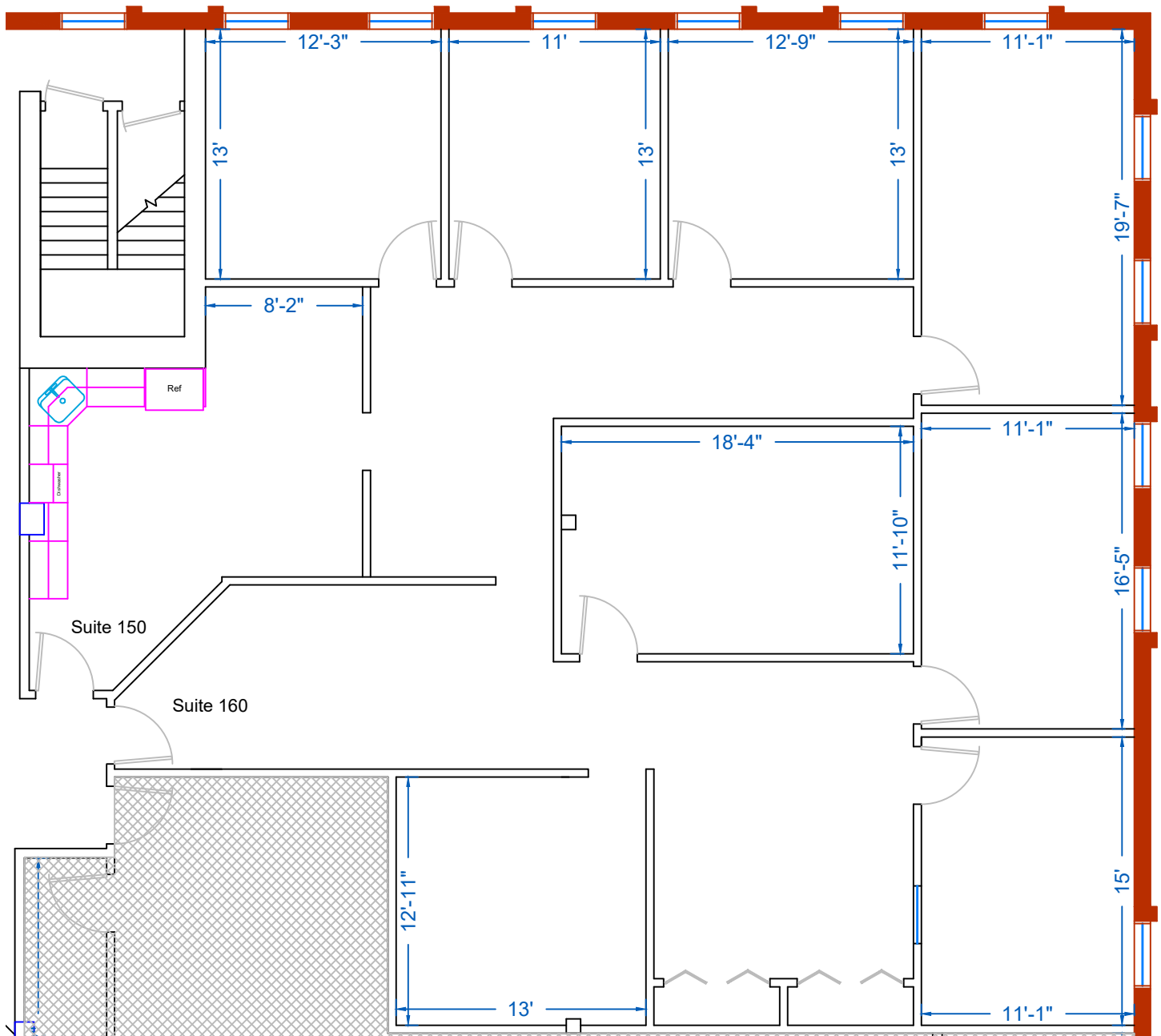
MOATS
OFFICE PROPERTIES

Office: 847-359-2121
Cell: 847-363-9700



The Office Park of Palatine

553 N North Ct, Suite 150 & 160
3,050 Rentable Square Feet



Scale: 1/8" = 1'-0"

PO Box 1189
Palatine, IL 60078

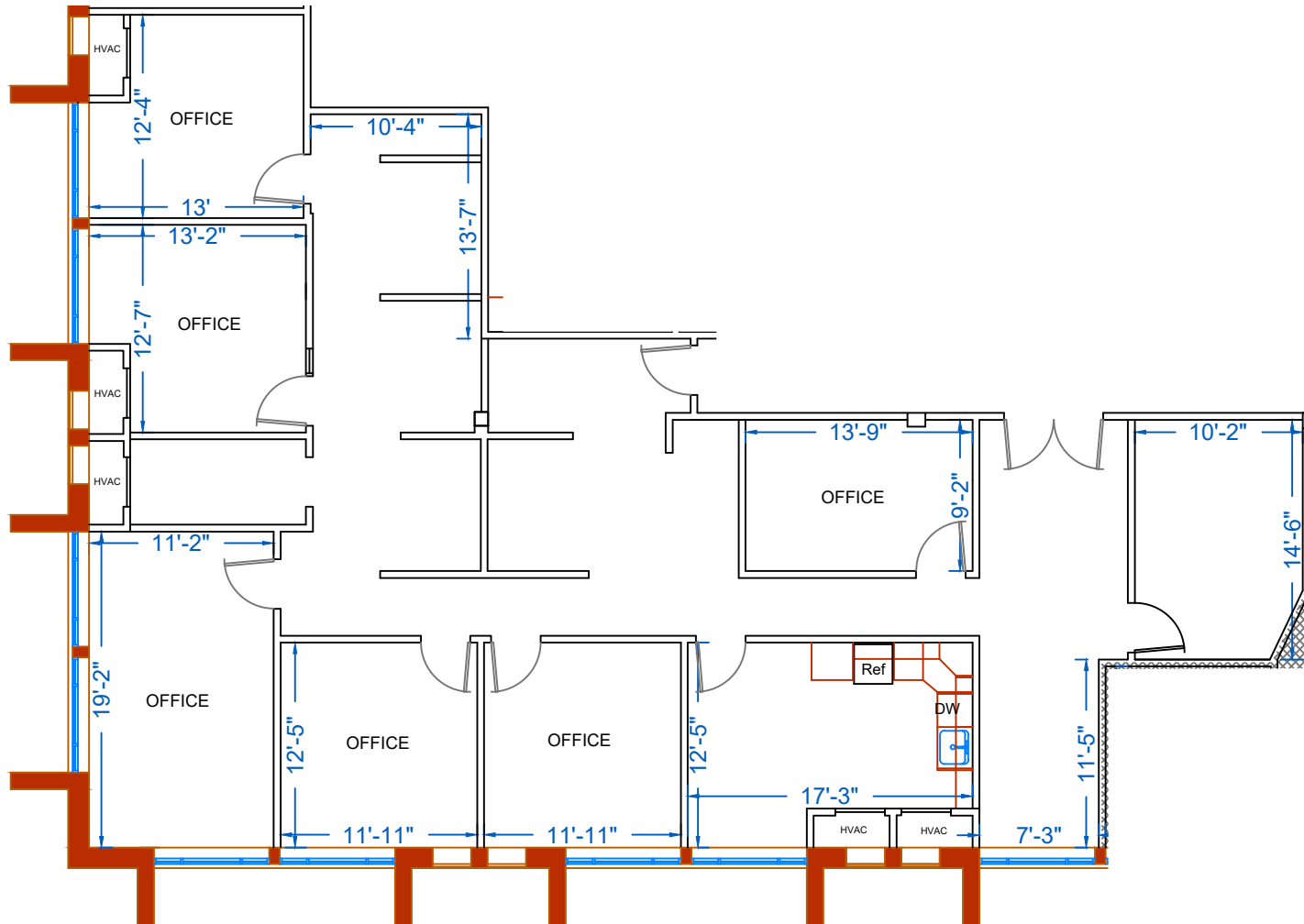
MOATS
OFFICE PROPERTIES

Office: 847-359-2121
Ryan: 847-363-9700
Larry: 847-630-1700



The Office Park of Palatine

579 N North Ct, Suite 260
2,930 Rentable Square Feet



Scale: 3/32" = 1'-0"

PO Box 1189
Palatine, IL 60078

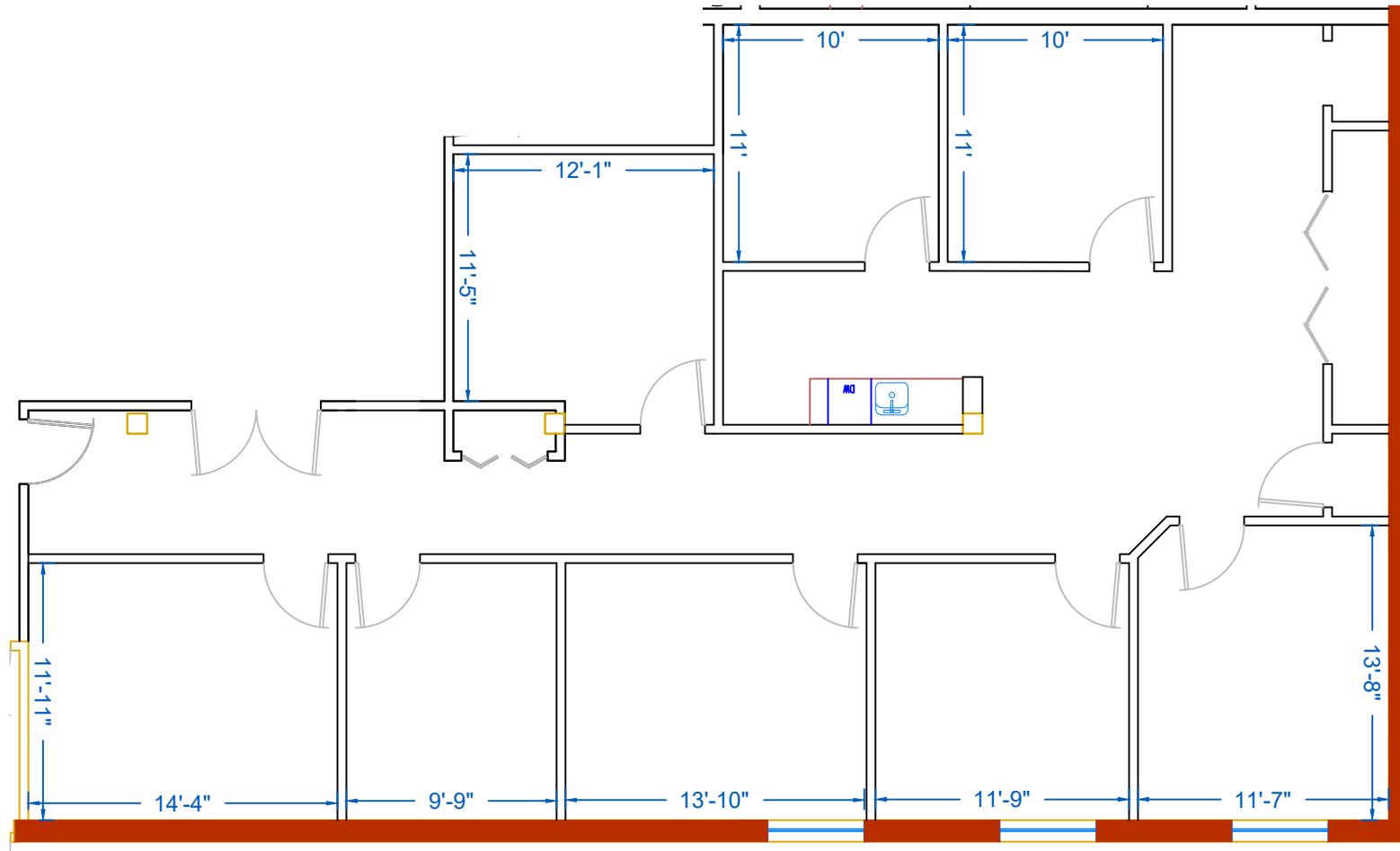
MOATS
OFFICE PROPERTIES

Office: 847-359-2121
Ryan: 847-363-9700
Larry: 847-630-1700



The Office Park of Palatine

630 N North Ct., Suite 180
2,329 Rentable Square Feet



Scale: 1/8" = 1'-0"

PO Box 1189
Palatine, IL 60078

MOATS
OFFICE PROPERTIES

Office: 847-359-2121
Ryan: 847-363-9700
Larry: 847-630-1700



The Office Park of Palatine

Notes
