



Located in Orion Township, Michigan, on the southeast corner of Baldwin & Waldon Roads

Space Available

- Join Kroger, ACO Hardware, Hallmark and other local retailers
- Just two miles north of I-75 and the Great Lakes Crossing regional mall
- Great exposure to heavily traveled Baldwin Road and Waldon Road; Excellent demographics
- Class "A" retail plaza with abundant parking

For more detailed information regarding this and other properties, including site plans, lease plans and demographics, go to

<http://adamscreg.com/properties/waldonpond/>

REPRESENTED BY:



For more information and availability contact:

Loretta Adams

laa@adamscreg.com

Office: 248-475-9100 Ext. 2069

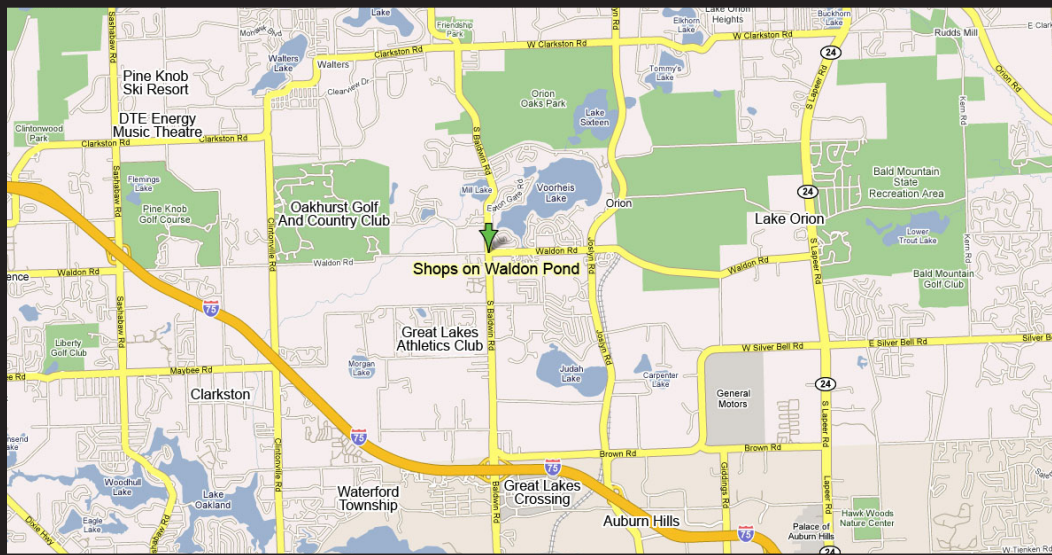
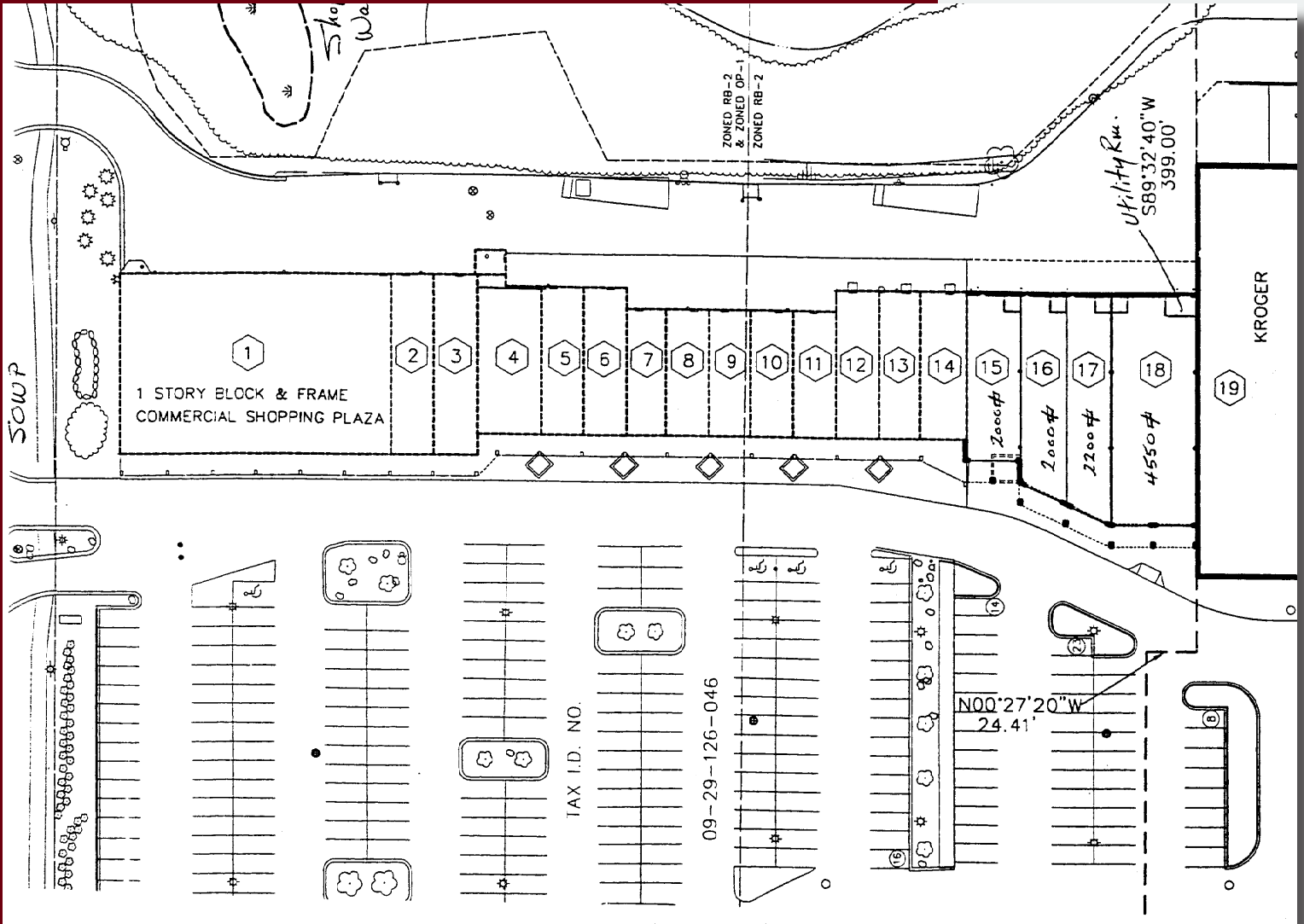
Cell: 586-201-5100

or visit our website at:

www.adamscreg.com

SHOPS ON WALDON POND

SPACE AVAILABLE



REPRESENTED BY:



***For more information and
availability contact:***

Loretta Adams

laa@adamscreg.com

Office: 248-475-9100 Ext. 2069

Cell: 586-201-5100