



# WHERE LEGACY MEETS LUXURY

124 Bentley Court, Troutman, NC 28166

FOR SALE | 4,923 Total SF

\*Images for illustrative purposes only; actual home may vary based on final design, features, and finishes selected.



Welcome home to Honeycutt Flats, an exclusive, high-end haven of luxury barndominiums custom-built by Spivey Construction Company. Part of the Spivey Signature Series, this elegant Lake Norman residence blends rural tranquility with expansive garage space for cars, boats, RVs, and everything else you need to live the life you've dreamed.

**BECAUSE AT HONEYCUTT FLATS, IT'S NOT JUST  
A BARNDOMINIUM. IT'S A SPIVEY.**

**HoneycuttFlats.com**

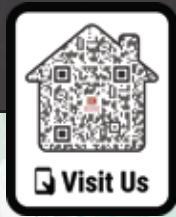


FOR MORE INFO CONTACT: LEWIS D. SPIVEY  
EQUITY COMMERCIAL PROPERTIES, LLC | REALTOR/BROKER

704-363-1401 | [LSPIVEY@EQUITYCP.COM](mailto:LSPIVEY@EQUITYCP.COM)



# LUXURY BARNDOMINIUM LIVING, THE WAY IT WAS MEANT TO BE



Learn more: [honeycuttflats.com](http://honeycuttflats.com)

Conveniently located off Perth Road, just minutes from Lake Norman State Park, Troutman, Mooresville, and I-77, don't miss this rare opportunity to experience Luxury Barndominium Living at its finest.

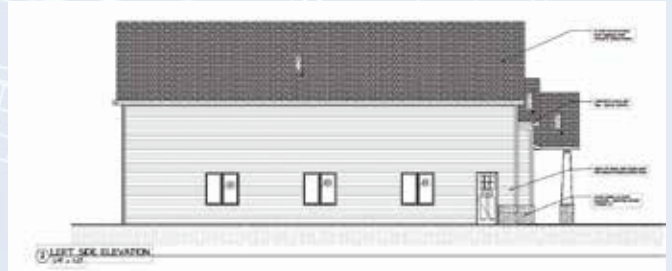


FOR MORE INFO CONTACT: LEWIS D. SPIVEY  
EQUITY COMMERCIAL PROPERTIES, LLC | REALTOR/BROKER

704-363-1401 | [LSPIVEY@EQUITYCP.COM](mailto:LSPIVEY@EQUITYCP.COM)

4,923  
Total SF  
\$1,295,000

Garage 3,272 SF  
Living Area 1,267 SF  
Porch 384 SF



\*Images for illustrative purposes only; actual home may vary based on final design, features, and finishes selected.