



Nearby Businesses

**cantoni**  
BY DESIGN

**Clifton**

**MILTON & KING**  
WALLPAPER AND FABRIC CO.

**LULU  
BRIDAL**

**PROPERTY HIGHLIGHTS**

Creative Office/Storage Floorplan

2,500 SF to 12,140 SF Available

Abundant Fenced-In Parking

1 Dock & Grade High Loading Zone

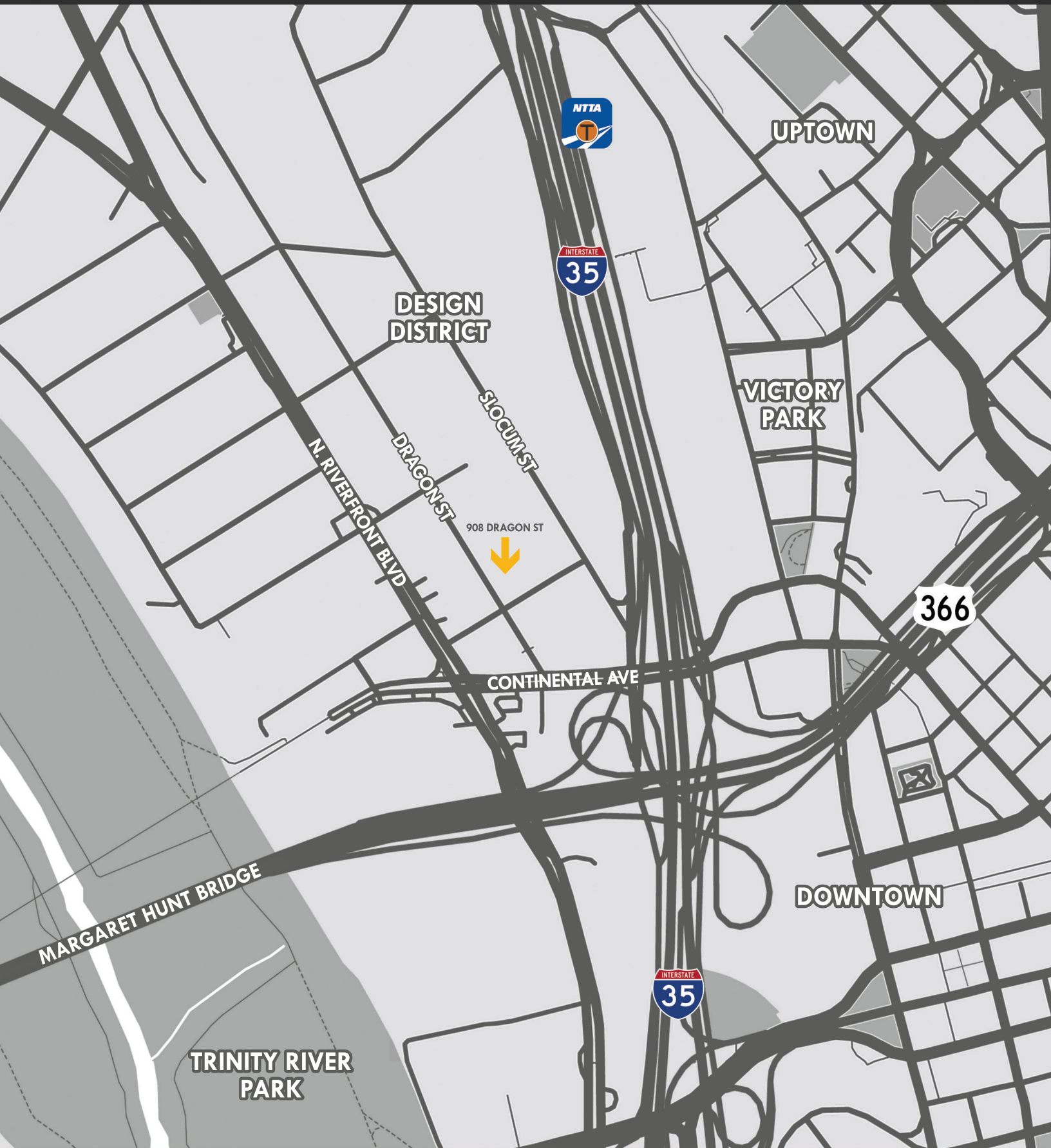
Clear Span 14' Ceilings

Energy Efficient TPO Roof

Easy Access To I-35, I-30 & Tollway

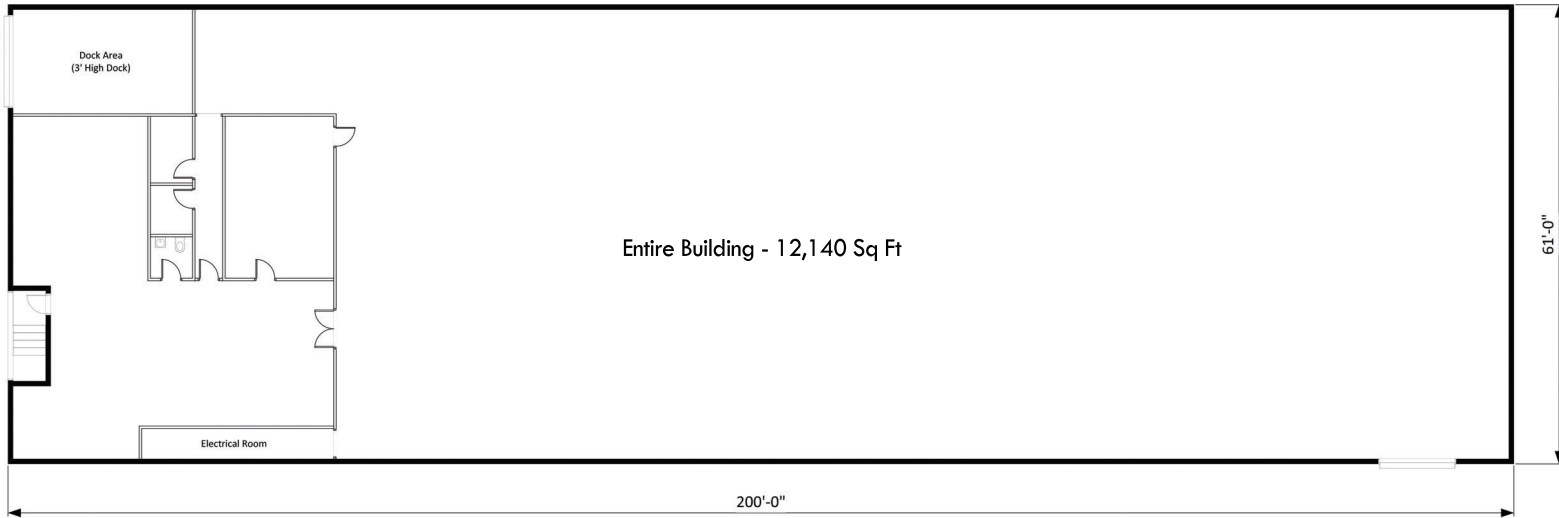
Zoning PD-621







## CURRENT FLOORPLAN



## PROPOSED FLOORPLAN (Subject To Tenant's Specific Needs)

