

# SCHOOL BUILDING FOR SALE

## 330 SOUTH AVENUE

FANWOOD, NJ 07023



## PROPERTY OVERVIEW

**BUILDING SF:** ±36,000 SF

**ASKING PRICE:** Please Call Brokers

**PARKING:** Abundant

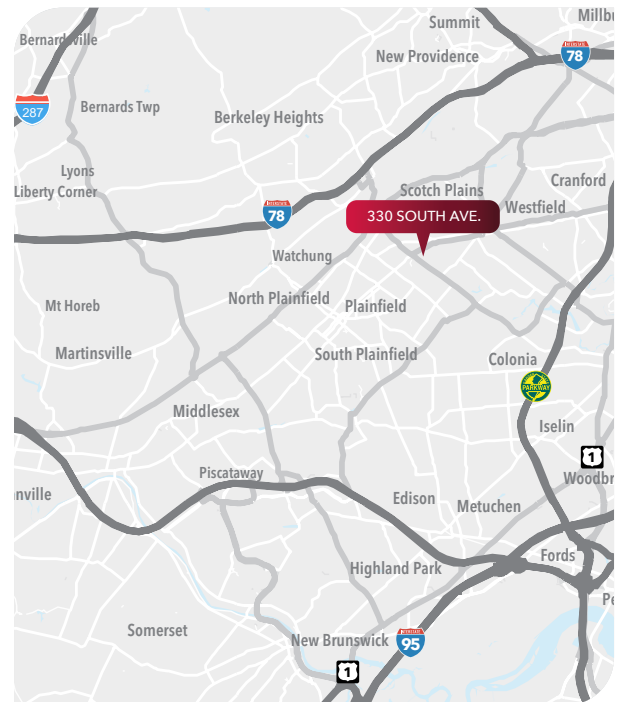
**ZONING:** Commercial Corridor East Zone

**COMMENTS:**

- Existing School
- ±3.7868 Acres

**LOCATION:**

- Union County
- Nearby I-78 & Garden State Parkway
- Near shopping, dining, financial, transit, and other services



## FOR MORE INFORMATION CONTACT EXCLUSIVE BROKERS:

**Beth Chezmar**  
beth.chezmar@lee-associates.com  
C 908.477.0291

**Erica Davidson**  
erica.davidson@lee-associates.com  
C 973.214.9733



**CLICK TO VIEW  
PROPERTY VIDEO**

**INTERIOR PHOTOS**



**RECEPTION AREA WITH ELEVATORS**



**LARGE GYMNASIUM/THERAPY AREA**



**HALLWAY**



**OFFICE**

**FOR MORE INFORMATION CONTACT EXCLUSIVE BROKERS:**

**Beth Chezmar**  
beth.chezmar@lee-associates.com  
C 908.477.0291

**Erica Davidson**  
erica.davidson@lee-associates.com  
C 973.214.9733

All information furnished regarding property for sale, rental or financing is from sources deemed reliable, but no warranty or representation is made to the accuracy thereof and same is submitted to errors, omissions, change of price, rental or other conditions prior to sale, lease or financing or withdrawal without notice. Buyer acknowledges that Lee & Associates of New Jersey, LLC ("Broker") has not verified the information contained herein and does not make any representation about its accuracy. Buyer should confirm information contained in the Offering using its own sources. No liability of any kind is to be imposed on Broker herein.

**INTERIOR PHOTOS**



**CLASSROOM**



**NURSE'S OFFICE**



**CAFETERIA**



**COMPUTER AREA**

**FOR MORE INFORMATION CONTACT EXCLUSIVE BROKERS:**

**Beth Chezmar**  
beth.chezmar@lee-associates.com  
C 908.477.0291

**Erica Davidson**  
erica.davidson@lee-associates.com  
C 973.214.9733

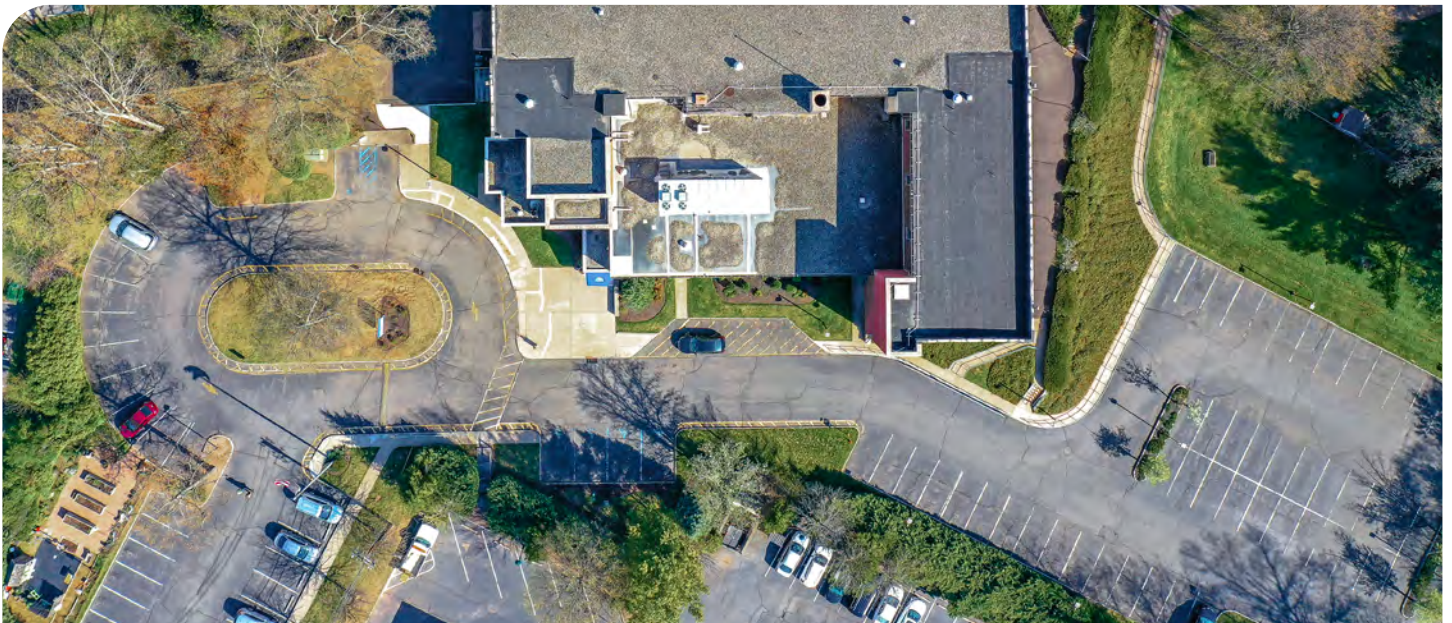
All information furnished regarding property for sale, rental or financing is from sources deemed reliable, but no warranty or representation is made to the accuracy thereof and same is submitted to errors, omissions, change of price, rental or other conditions prior to sale, lease or financing or withdrawal without notice. Buyer acknowledges that Lee & Associates of New Jersey, LLC ("Broker") has not verified the information contained herein and does not make any representation about its accuracy. Buyer should confirm information contained in the Offering using its own sources. No liability of any kind is to be imposed on Broker herein.

**SCHOOL BUILDING FOR SALE**  
**330 SOUTH AVENUE**  
FANWOOD, NJ 07023

**EXTERIOR PHOTOS**



**PLAYGROUND**



**AERIAL VIEW OF BUILDING AND PARKING LOTS**

**FOR MORE INFORMATION CONTACT EXCLUSIVE BROKERS:**

**Beth Chezmar**  
beth.chezmar@lee-associates.com  
C 908.477.0291

**Erica Davidson**  
erica.davidson@lee-associates.com  
C 973.214.9733

All information furnished regarding property for sale, rental or financing is from sources deemed reliable, but no warranty or representation is made to the accuracy thereof and same is submitted to errors, omissions, change of price, rental or other conditions prior to sale, lease or financing or withdrawal without notice. Buyer acknowledges that Lee & Associates of New Jersey, LLC ("Broker") has not verified the information contained herein and does not make any representation about its accuracy. Buyer should confirm information contained in the Offering using its own sources. No liability of any kind is to be imposed on Broker herein.