

For

Lease

16TH FLOOR
540 – 2,151 R.S.F.

SUITE R.S.F.

PH 7	540
PH 14	1,384
PH 1	1,390
PH 11	2,151

- \$28.50 / R.S.F., full service
- 5-10 year term
- Available immediately
- Parking ratio 4 / 1,000 R.S.F.
- 24-hour HVAC

*For more details
or to arrange a tour
please contact:*

301.961.9696
Mark Rittenberg
Ext. 204
mark@amrcommercial.com

Triangle Towers

**4853 Cordell Avenue
Bethesda, Maryland**



Triangle Towers is located in the heart of the Woodmont Triangle. Surrounded by restaurants and shops, this space is just a short walk to the Bethesda Metro Station.

Although all information furnished is from sources we deem reliable, such information has not been verified and no express representation is made, nor is any to be implied, as to the accuracy thereof, and it is submitted subject to errors, omissions, changes of price/rental or other conditions prior to sale or lease, and subject to withdrawal without notice.



ALEXANDER, MONTROSE, RITTENBERG
Commercial Real Estate Brokerage
Est. 1994

Celebrating
29
Years
1994-2023

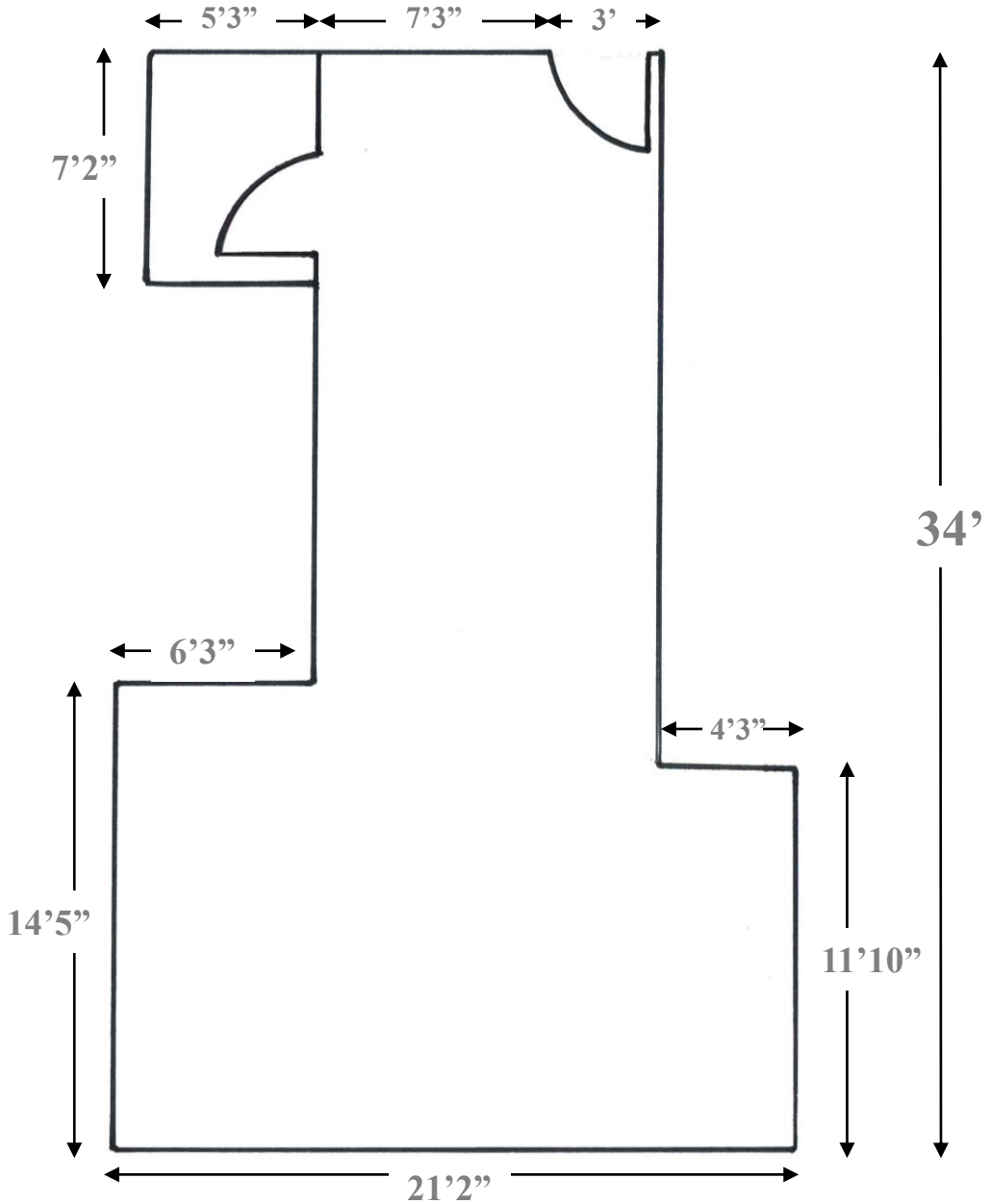
A Member of **CORE**
NETWORK

4849 Rugby Avenue ♦ Suite 200 ♦ Bethesda, Maryland 20814 ♦ 301.961.9696 ♦ Fax 301.656.7551 ♦ www.amrcommercial.com

TRIANGLE TOWERS

4853 Cordell Avenue
Bethesda, MD 20814

PH 7
540 R.S.F.



NOT TO SCALE | MEASUREMENTS APPROXIMATE

Although all information furnished is from sources we deem reliable, such information has not been verified and no express representation is made, nor is any to be implied, as to the accuracy thereof, and it is submitted subject to errors, omissions, changes of price/rental or other conditions prior to sale or lease, and subject to withdrawal without notice.



ALEXANDER, MONTROSE, RITTENBERG
Commercial Real Estate Brokerage
Est. 1994

Celebrating
29
Years
1994-2023

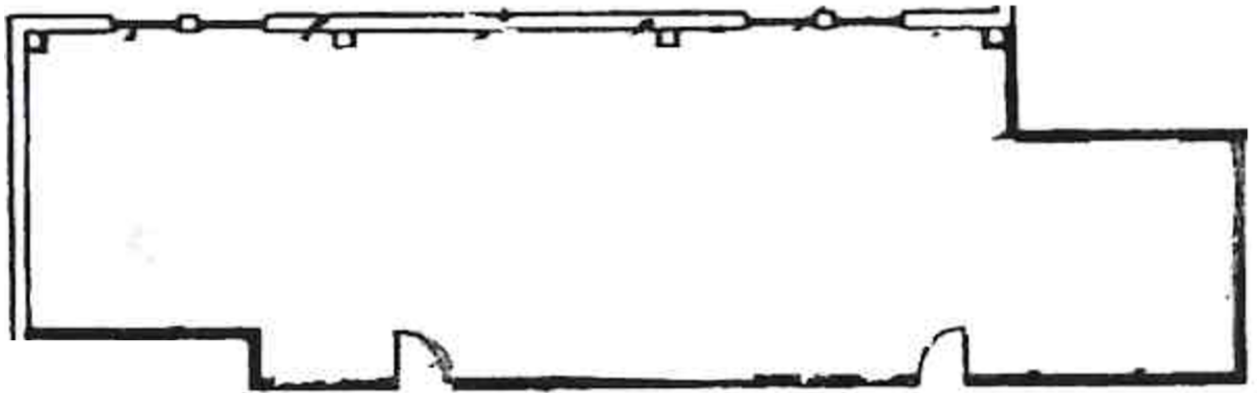
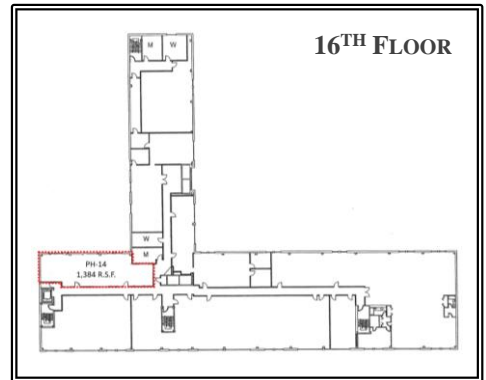
A Member of **CORE**
NETWORK

4849 Rugby Avenue ♦ Suite 200 ♦ Bethesda, Maryland 20814 ♦ 301.961.9696 ♦ Fax 301.656.7551 ♦ www.amrcommercial.com

TRIANGLE TOWERS

4853 Cordell Avenue
Bethesda, MD 20814

PH 14
1,384 R.S.F.



NOT TO SCALE | MEASUREMENTS APPROXIMATE

Although all information furnished is from sources we deem reliable, such information has not been verified and no express representation is made, nor is any to be implied, as to the accuracy thereof, and it is submitted subject to errors, omissions, changes of price/rental or other conditions prior to sale or lease, and subject to withdrawal without notice.



ALEXANDER, MONTROSE, RITTENBERG
Commercial Real Estate Brokerage
Est. 1994

Celebrating
29
Years
1994-2023

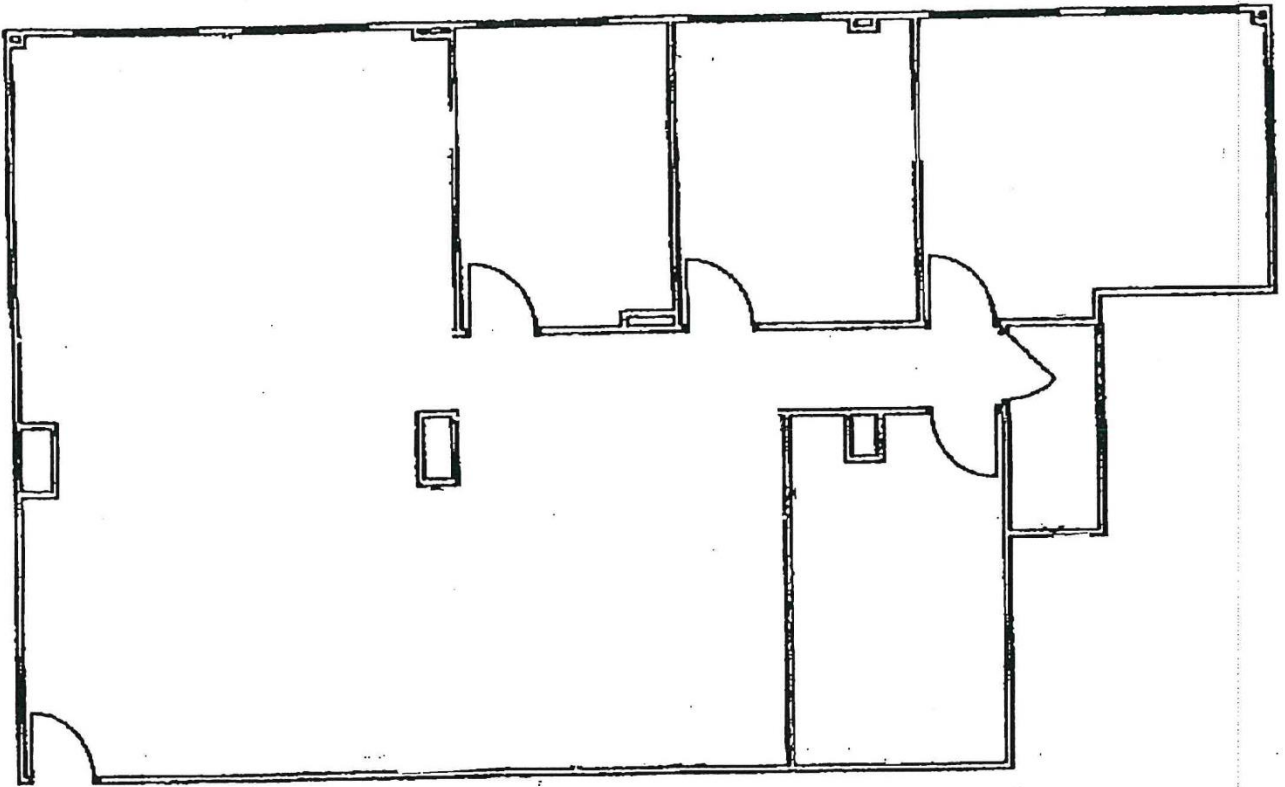
A Member of **CORE**
NETWORK

4849 Rugby Avenue ♦ Suite 200 ♦ Bethesda, Maryland 20814 ♦ 301.961.9696 ♦ Fax 301.656.7551 ♦ www.amrcommercial.com

TRIANGLE TOWERS

4853 Cordell Avenue
Bethesda, MD 20814

PH 11
2,151 R.S.F.



NOT TO SCALE | MEASUREMENTS APPROXIMATE

Although all information furnished is from sources we deem reliable, such information has not been verified and no express representation is made, nor is any to be implied, as to the accuracy thereof, and it is submitted subject to errors, omissions, changes of price/rental or other conditions prior to sale or lease, and subject to withdrawal without notice.



ALEXANDER, MONTROSE, RITTENBERG
Commercial Real Estate Brokerage
Est. 1994

Celebrating
29
Years
1994-2023

A Member of **CORE**
NETWORK

4849 Rugby Avenue ♦ Suite 200 ♦ Bethesda, Maryland 20814 ♦ 301.961.9696 ♦ Fax 301.656.7551 ♦ www.amrcommercial.com

WOODMONT TRIANGLE

