

PARK PLAZA 215 SHUMAN BLVD | NAPERVILLE

Office Space for Lease

Best Value for Class A Space | 1,275 SF to 173,000 SF Available

HIGHLIGHTS

Suites Ranging from 1,275 SF up to 173,000 SF

Abundant Parking:
4 Spaces per 1,000 SF and
Heated Parking Garage

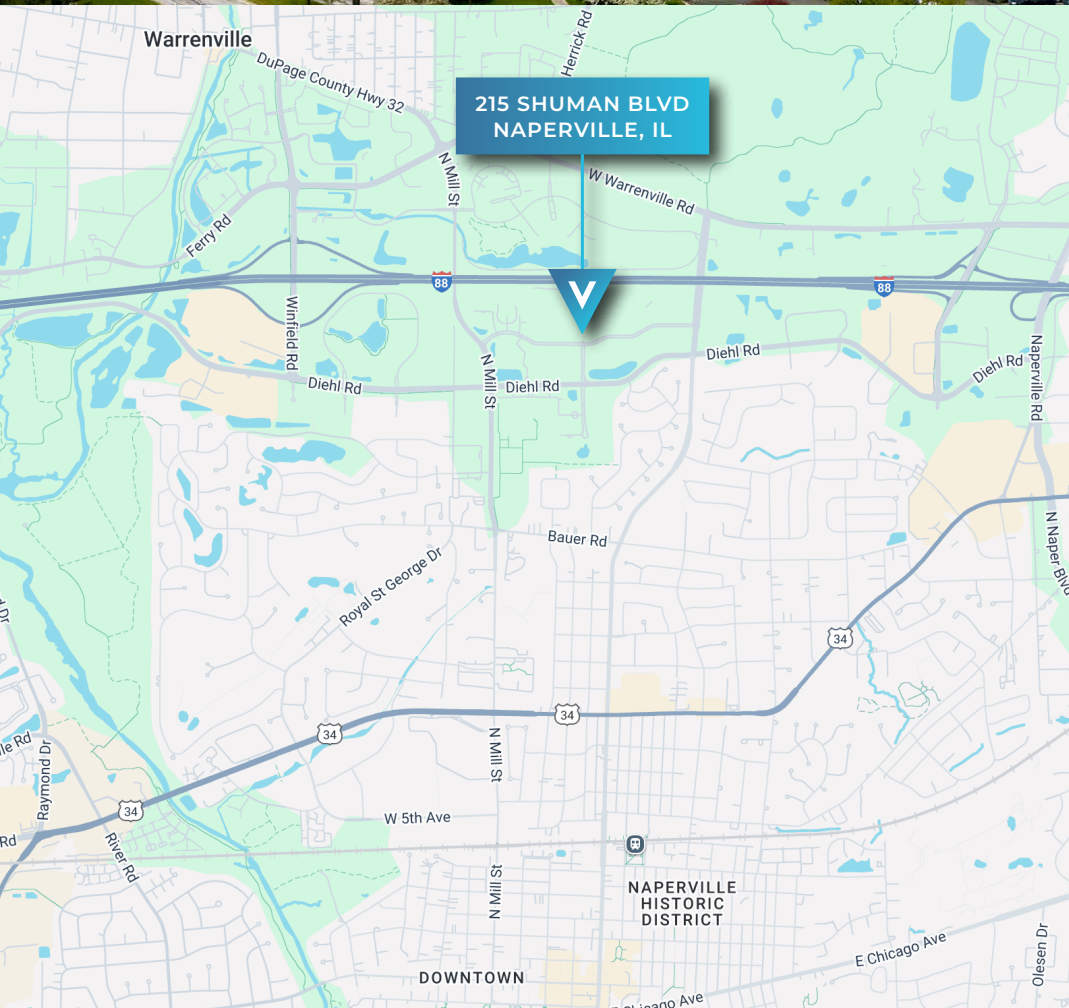
Fully-Equipped Fitness
Center



VersaRES.com

**Farbman
Group®**
FULL SERVICE REAL ESTATE SOLUTIONS

VERSA
REAL ESTATE SERVICES



PROPERTY SUMMARY

ASKING LEASE RATE	\$12.50 PSF NNN
AVAILABLE SQUARE FEET	174,503 SF
BUILDING SQUARE FEET	210,774 SF
PARKING RATIO	4.03 / 1,000 SF
YEAR BUILT	1982

AREA AMENITIES

- » Easy Access to I-88
- » Numerous Restaurants and Hotels Nearby

BUILDING HIGHLIGHTS

- » Indoor Executive Heated Garage
- » Fitness Center
- » 52,500 SF Floorplates
- » Up to 173,000 SF Available for Lease
- » Beautifully Landscaped Park-like Setting with Fountain



RYAN MOEN, SIOR
PRINCIPAL
DESIGNATED MANAGING BROKER
630.480.6346
rmoen@VersaRES.com

JOHN MILLNER, CCIM
PRINCIPAL
630.480.6342
jmillner@VersaRES.com

KYLE HARRIS
ASSOCIATE
630.716.3147
kharris@VersaRES.com

GREG AIKENS
BROKER
224.373.4481
aikens@farbman.com

