

For Lease- Dock High and Ground Level Warehouse

828 South 500 West, Salt Lake City, Utah



SLC Granary District

Property Details

- Total Size: 17,076 SF
Office: 800 SF
Warehouse: 16,276 SF
Doors: (1) 10'x10' Dock High
(1) 14'x16' Ground Level
(1) 12'x12' Ground Level
Ceiling: 20' Clear
Power: 200 A, 480 V, 3 Phase
- New Office, LED Lighting, Fresh Paint, and Glass Storefront
 - Free Mezzanine above the office (not included in SF)
 - Large glass windows throughout providing abundant natural light
 - Fire Sprinkled
 - Great location in downtown SLC Granary District
 - Freeway access within less than one minute from the site

**LEASE RATE \$.85 PSF,
NNN**



Bob Mills

385.988.6477

bob@adventut.com

Riley Mills

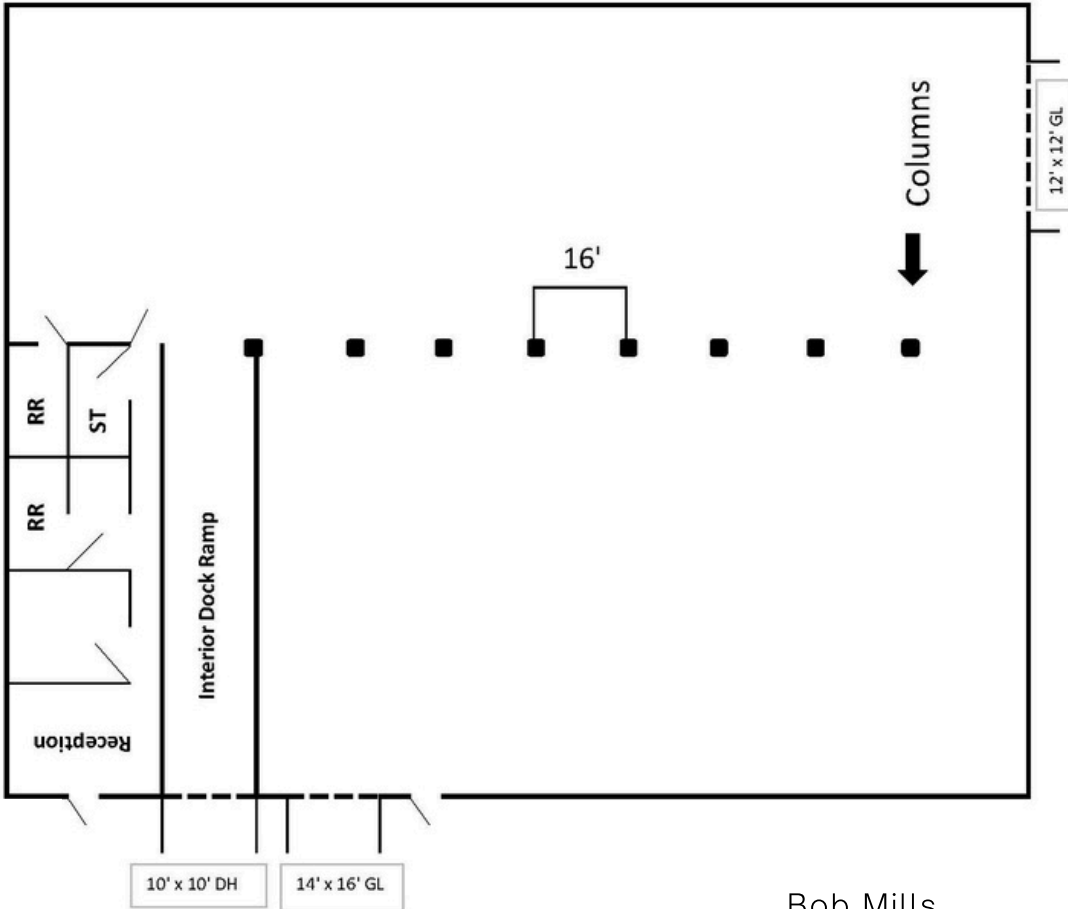
385.988.6478

riley@adventut.com

Advent Property Advisors: 5284 S. Commerce Drive, #C-274, Murray, Ut

For Lease- Dock High and Ground Level Warehouse

828 South 500 West, Salt Lake City, Utah



Bob Mills
385.988.6477
bob@adventut.com

Riley Mills
385.988.6478
riley@adventut.com