



35
CORPORATE DRIVE
PORTSMOUTH, NH

FORMER REDHOOK BREWERY

AVAILABLE FOR SALE/LEASE



**CUSHMAN &
WAKEFIELD**



WHERE CRAFT MEETS COMMERCIAL

BUILDINGS AND EQUIPMENT AVAILABLE FOR SALE

An integrated F&B production hub with the infrastructure to scale and the space to connect with consumers

KEY HIGHLIGHTS

±110,000 SF
PURPOSE-BUILT
BEVERAGE FACILITY
ON TWO LEVELS

±80,000 SF
PRODUCTION
AND MEZZANINE
AREA

210,000
HECTOLITERS/
YEAR BREWING
CAPACITY

±15,041 SF
SECOND FLOOR
OFFICE

±15,041 SF
FORMER PUB
& EVENT SPACE
WITH PATIO



SF:	±110,000 SF Brewery
	±2,800 SF Single-story waste-water treatment plant
SITE SIZE:	±23.54 acres (ground lease)
	GROUND LEASE: Expires 04/13/2047 with two 7-year renewal options (additional extensions negotiable)
	Current ground rent is \$304,555, increasing every 5 years, by 5% starting November 2026.
YEAR BUILT:	1996
LOADING:	12 tailboard docks, 1 drive-in door
POWER:	3,000 Amps 480/277 volt 3-phase 4 wire
UTILITIES:	Municipal water & sewer
ZONING:	Airport Business Commercial (ABC)
	Foreign Trade Zone (FTZ#81)
	Pease Tradeport Economic Revitalization Zone (ERZ)
CLEAR HEIGHT:	PRODUCTION: 26'8" to joist
	CELLARS: 38'4" to joist

3
CORPORATE DRIVE

SCALABLE PRODUCTION SEAMLESS PACKAGING

VERSATILE INFRASTRUCTURE
READY FOR CO-PACKING OR
DIRECT BRAND OPERATIONS

BREWING &
LIQUID PROCESSING

PACKAGING LINES

1 BREWHOUSE WITH ADVANCED CAPABILITIES INCLUDING:

Dry hopping, unitanks, centrifuge,
K-filter, sheet filter

Flavor integration and seltzer base
readiness

CANS (12oz / 16oz):
Krones Craftmate | Up to 265 cans/min

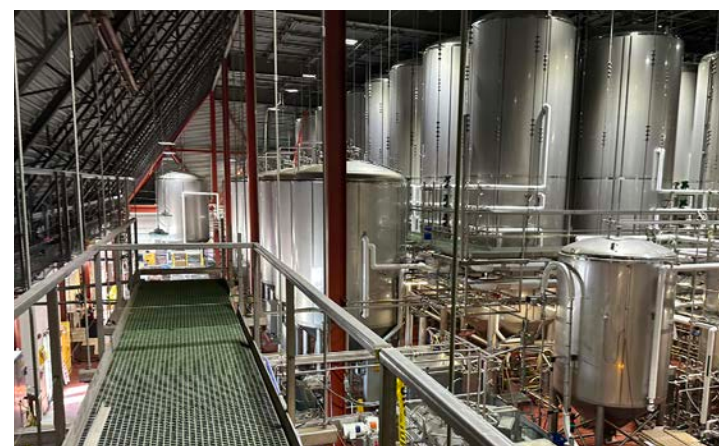
GLASS BOTTLES (12oz):
Krones Solomatic | Up to 380 bpm

KEGS:
Half, quarter, and sixtel options | 1 keg/
min line

CURRENT PACKAGING FORMATS SUPPORTED:

6-packs, 12-packs, 18-packs, 24-packs
(can & bottle)

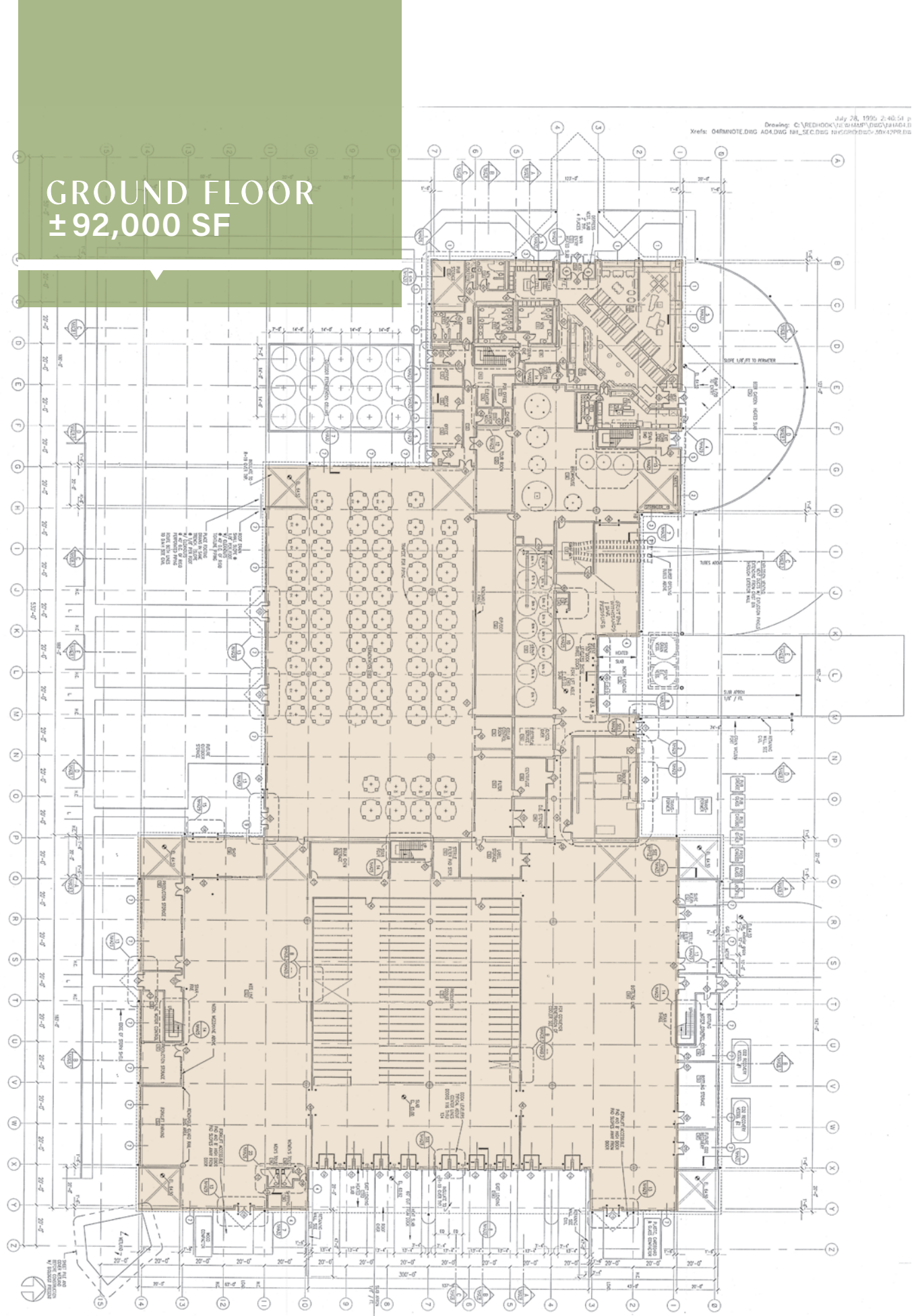
Specialty formats including branded
bottles and packed glass SKUs





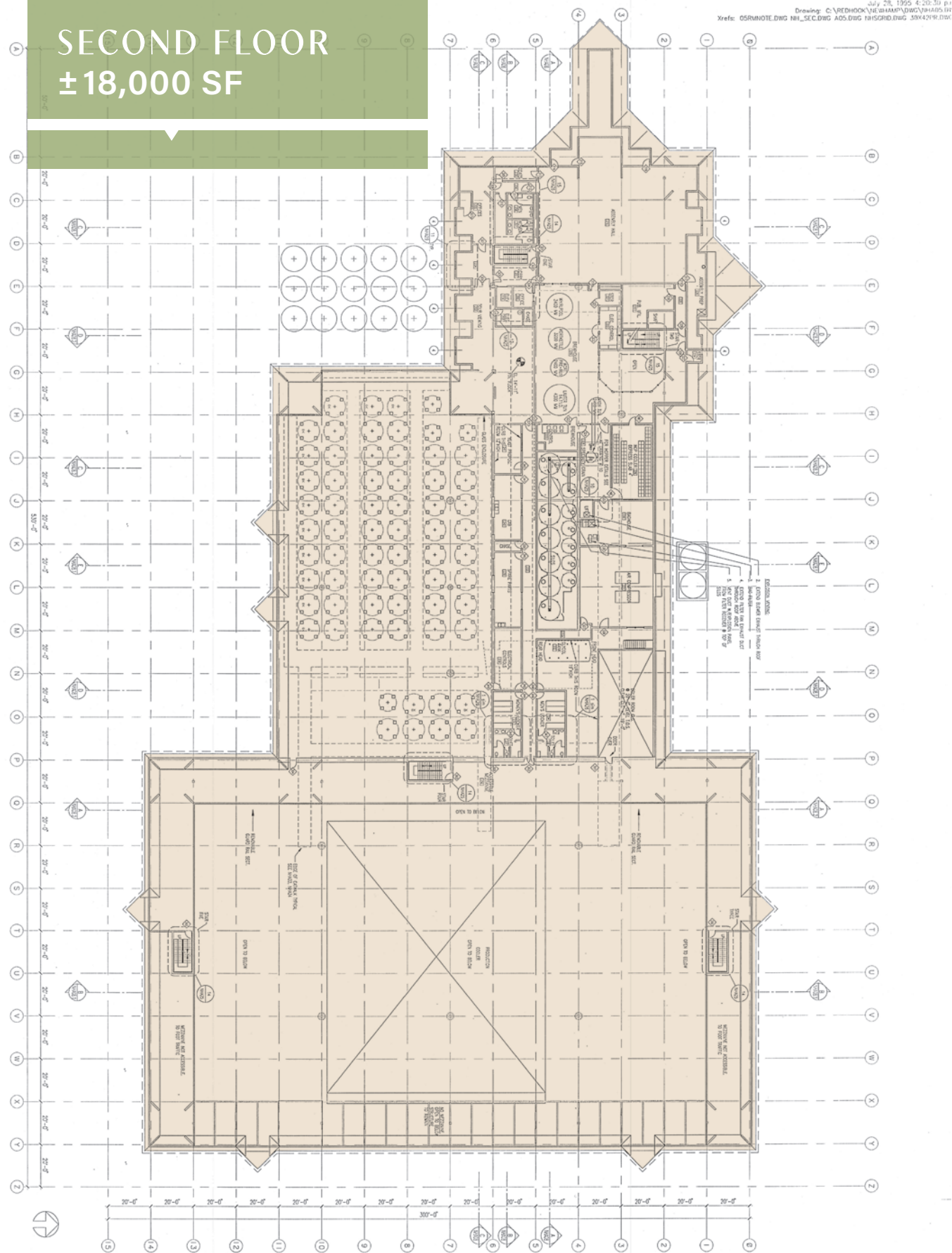
5
CORPORATE DRIVE

THE FACILITY IN DETAIL

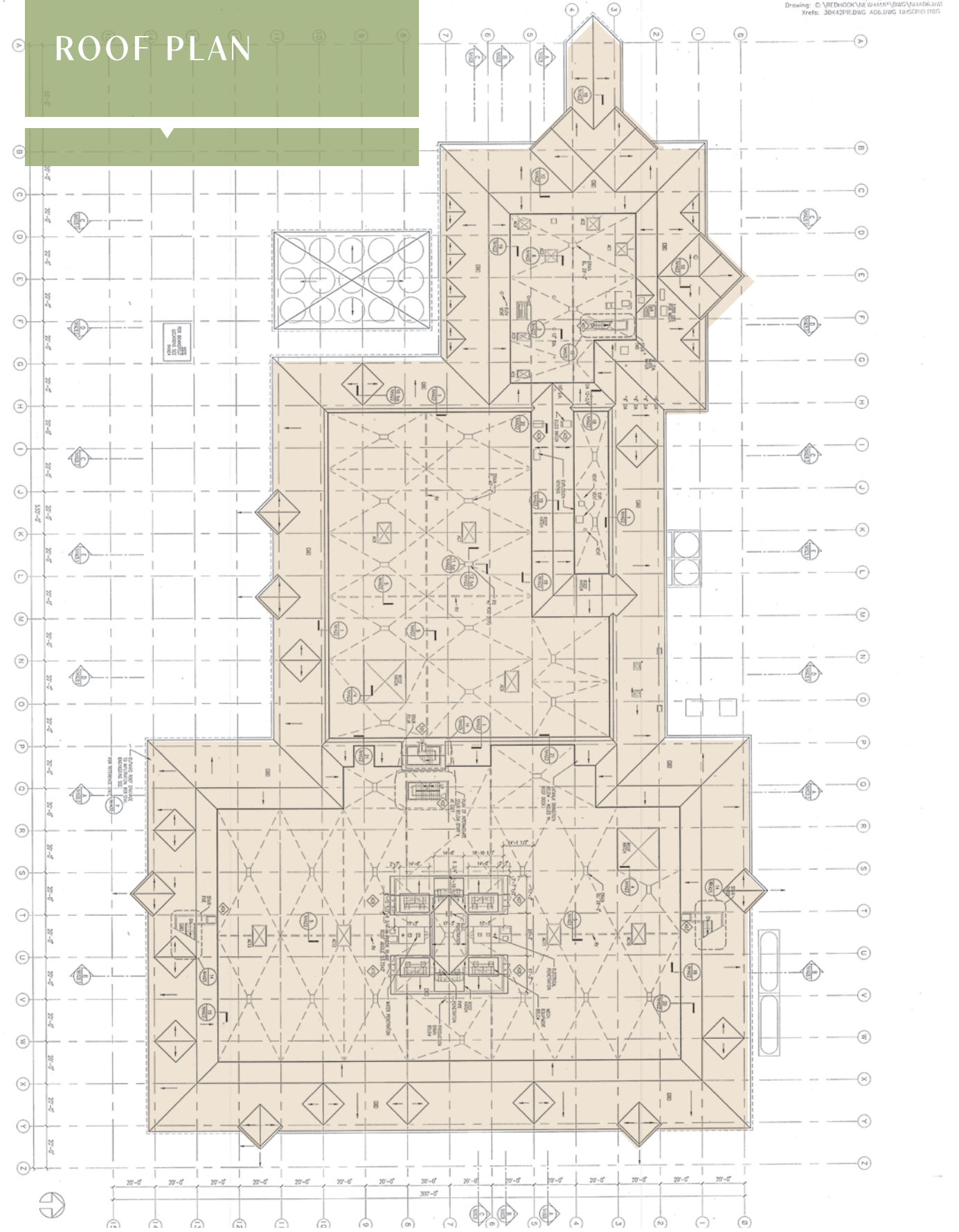


GROUND FLOOR
± 92,000 SF

SECOND FLOOR ±18,000 SF



ROOF PLAN



STRATEGICALLY SITUATED FOR GROWTH

RELIABLE ACCESS TO
KEY MARKETS AND
LOCAL AMENITIES



LOCATION

- Situated in Portsmouth, NH an established suburban business hub with a strong workforce
- Business-friendly environment ideal for food & beverage operations
- New Hampshire's favorable business climate, no capital gains, sales, or income or millionaire's tax.



ACCESS

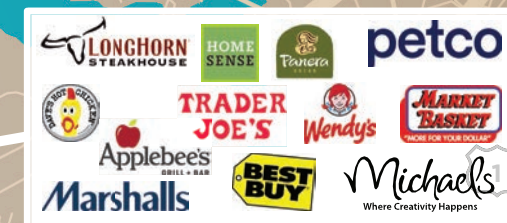
- Minutes from Portsmouth International Airport (PSM)
- Superior highway access and visibility
 - 2/10 of a mile to Route 4
 - 2.5 miles to I-95
 - 4 miles to Maine
 - 10 miles to Route 101

3
CORPORATE DRIVE

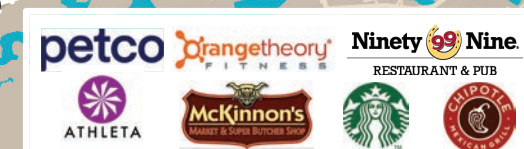
CONNECTED TO AMENITIES

RETAIL & AMENITIES

- Surrounded by dining, retail, and everyday conveniences
- Local services support employee needs and client visits

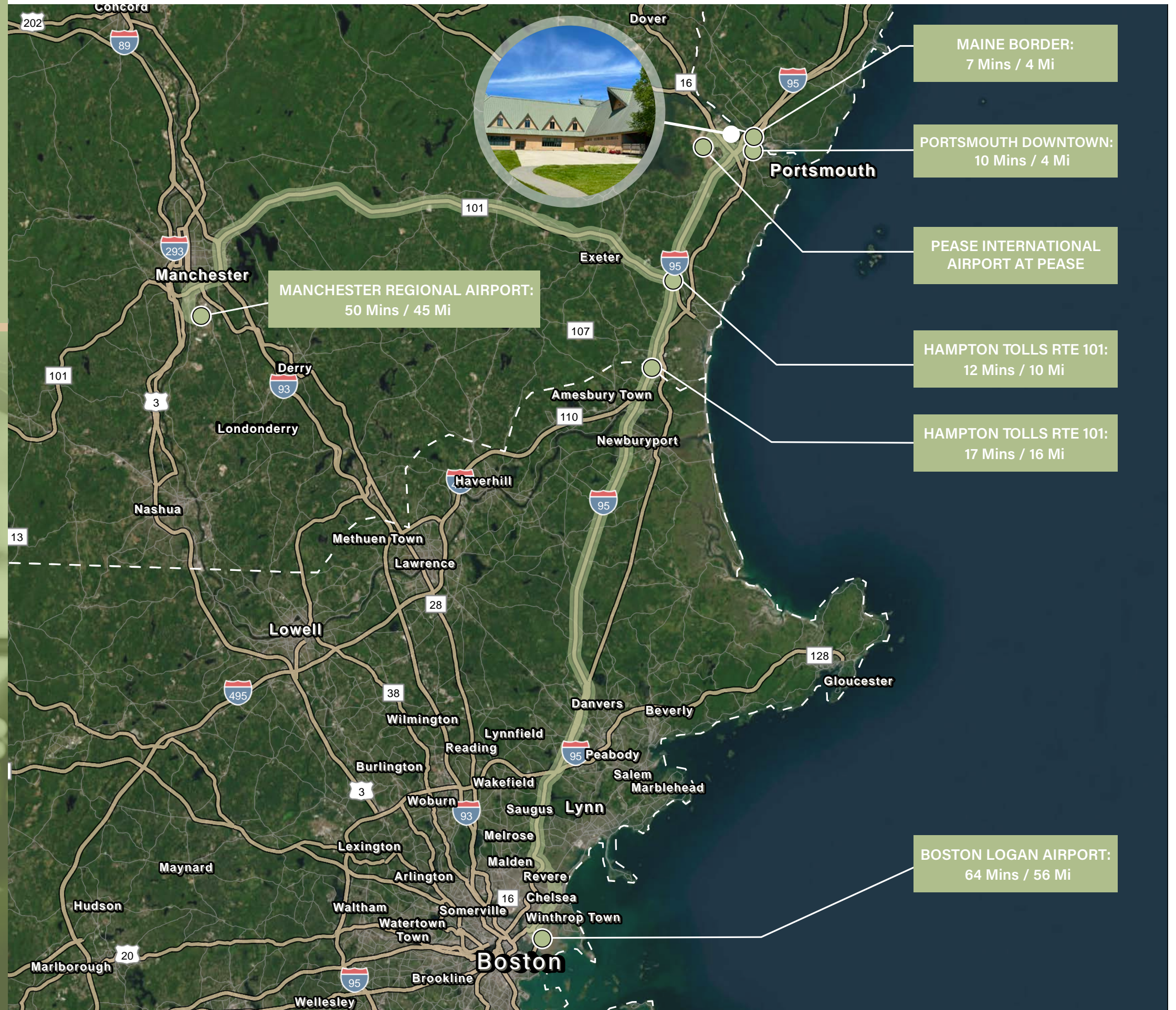


3
CORPORATE DRIVE





DRIVE TIMES



35 CORPORATE DRIVE



FOR MORE INFORMATION, CONTACT:

THOMAS P. FARRELLY, SIOR
Executive Managing Director
+1 603 661 4854
thomas.farrelly@cushwake.com

DENIS C.J. DANCOES II
Executive Director
+1 603 661 3854
denis.dancoes@cushwake.com

TOM FARRELLY
Associate
+1 603 828 3072
tom.farrelly@cushwake.com



Cushman & Wakefield of New Hampshire, Inc.
900 Elm Street, Suite 1301. Manchester, NH 03101
+603 628 2800
cushmanwakefield.com

©2025 Cushman & Wakefield. All rights reserved. The information contained in this communication is strictly confidential. This information has been obtained from sources believed to be reliable but has not been verified. NO WARRANTY OR REPRESENTATION, EXPRESS OR IMPLIED, IS MADE AS TO THE CONDITION OF THE PROPERTY (OR PROPERTIES) REFERENCED HEREIN OR AS TO THE ACCURACY OR COMPLETENESS OF THE INFORMATION CONTAINED HEREIN, AND SAME IS SUBMITTED SUBJECT TO ERRORS, OMISSIONS, CHANGE OF PRICE, RENTAL OR OTHER CONDITIONS, WITHDRAWAL WITHOUT NOTICE, AND TO ANY SPECIAL LISTING CONDITIONS IMPOSED BY THE PROPERTY OWNER(S). ANY PROJECTIONS, OPINIONS OR ESTIMATES ARE SUBJECT TO UNCERTAINTY AND DO NOT SIGNIFY CURRENT OR FUTURE PROPERTY PERFORMANCE.