

OFFICE SPACE FOR LEASE

455 SHERMAN STREET

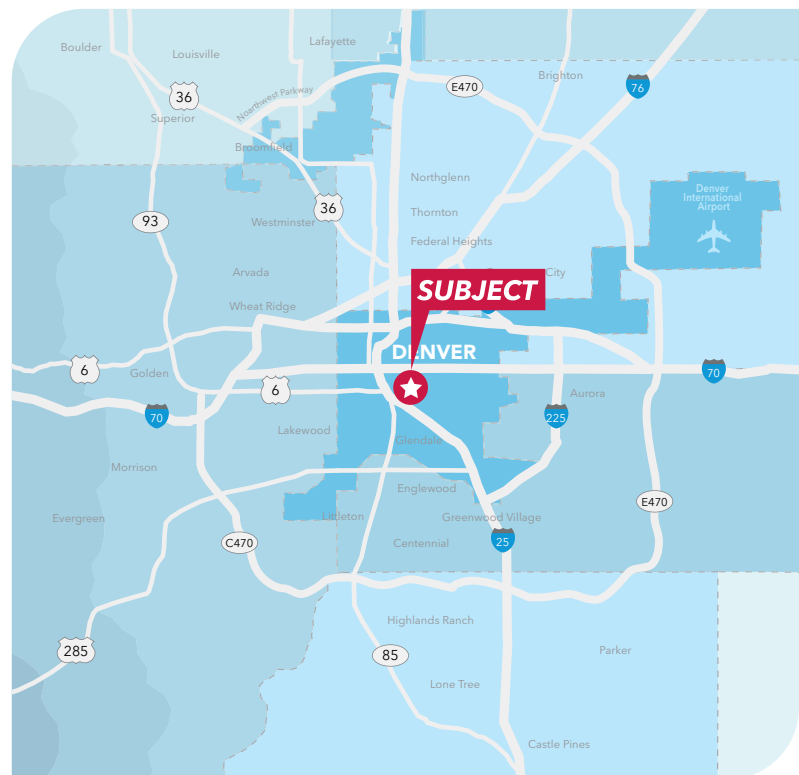
DENVER, COLORADO 80203

LEE & ASSOCIATES
COMMERCIAL REAL ESTATE SERVICES



PROPERTY OVERVIEW

SIZE	± 117,305
YEAR BUILT / RENOVATED	1983 / 2008
BUILDING CLASS	A
NUMBER OF FLOORS	5
PARKING COSTS	\$105/Month covered, reserved \$85/Month surface, reserved
PARKING RATIO	1 : 384 SF
STARTING LEASE RATE	\$26.50/SF Full Service Gross



JR BITZER

303 501 8778

jrbitzer@lee-associates.com

OFFICE SPACE FOR LEASE

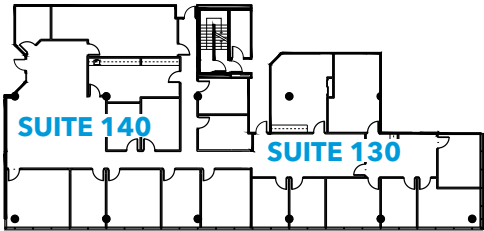
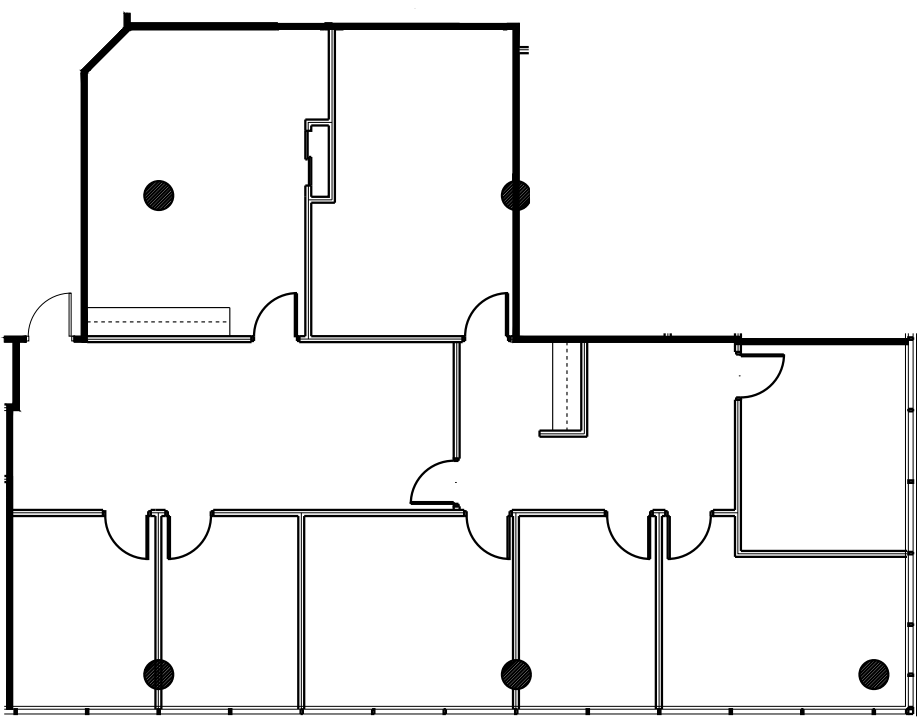
455 SHERMAN STREET

DENVER, COLORADO 80203



SUITE 130
±2,720 RSF
CONTIGUOUS WITH SUITE 140

AVAILABLE NOW



SUITE	SIZE	LAYOUT	AVAILABILITY
130	±2,720 RSF	6 exterior offices, 1 conference room, reception/lobby area, access to restrooms, elevator and stairs	Available Now

JR BITZER
303 501 8778
jrbitzer@lee-associates.com

OFFICE SPACE FOR LEASE

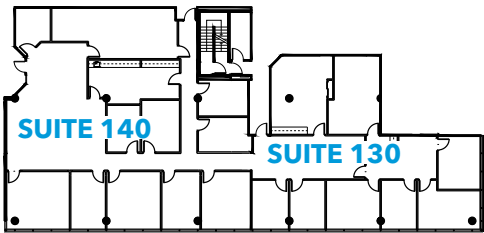
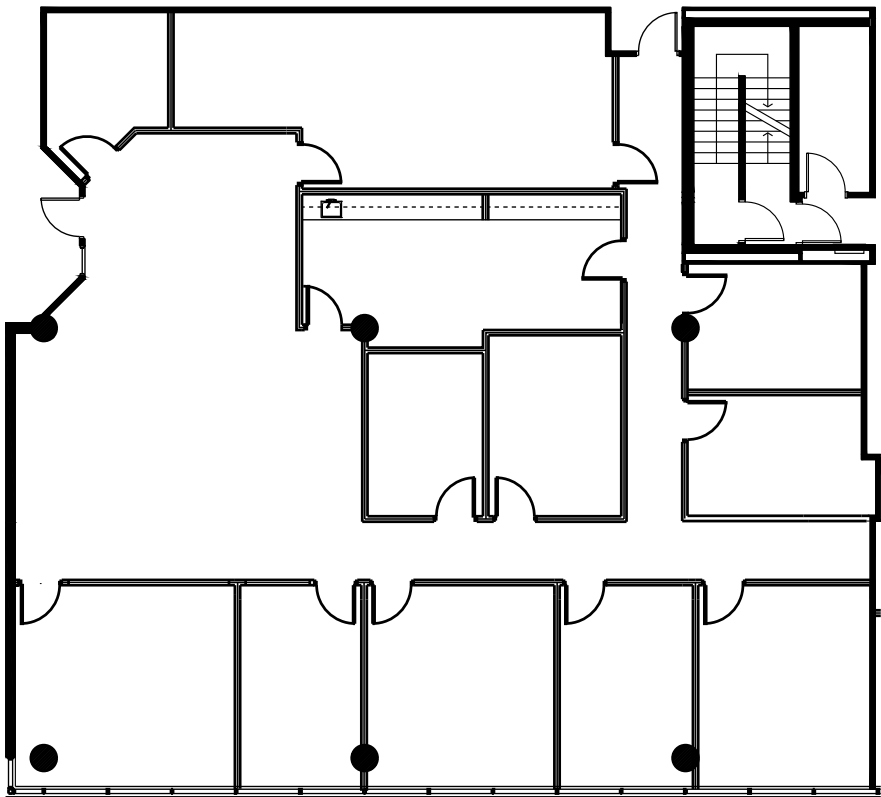
455 SHERMAN STREET

DENVER, COLORADO 80203



SUITE 140
±4,382 RSF
CONTIGUOUS WITH SUITE 130

AVAILABLE
MARCH 1, 2026



SUITE	SIZE	LAYOUT	AVAILABILITY
140	±4,382 RSF	10 offices (5 exterior) 1 conference room, reception/lobby area, kitchen/break room, access to restrooms, elevator and stairs	March 1, 2026

JR BITZER
303 501 8778
jrbitzer@lee-associates.com

OFFICE SPACE FOR LEASE

455 SHERMAN STREET

DENVER, COLORADO 80203

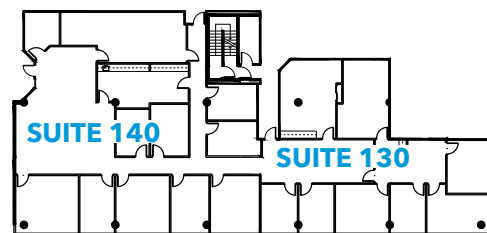
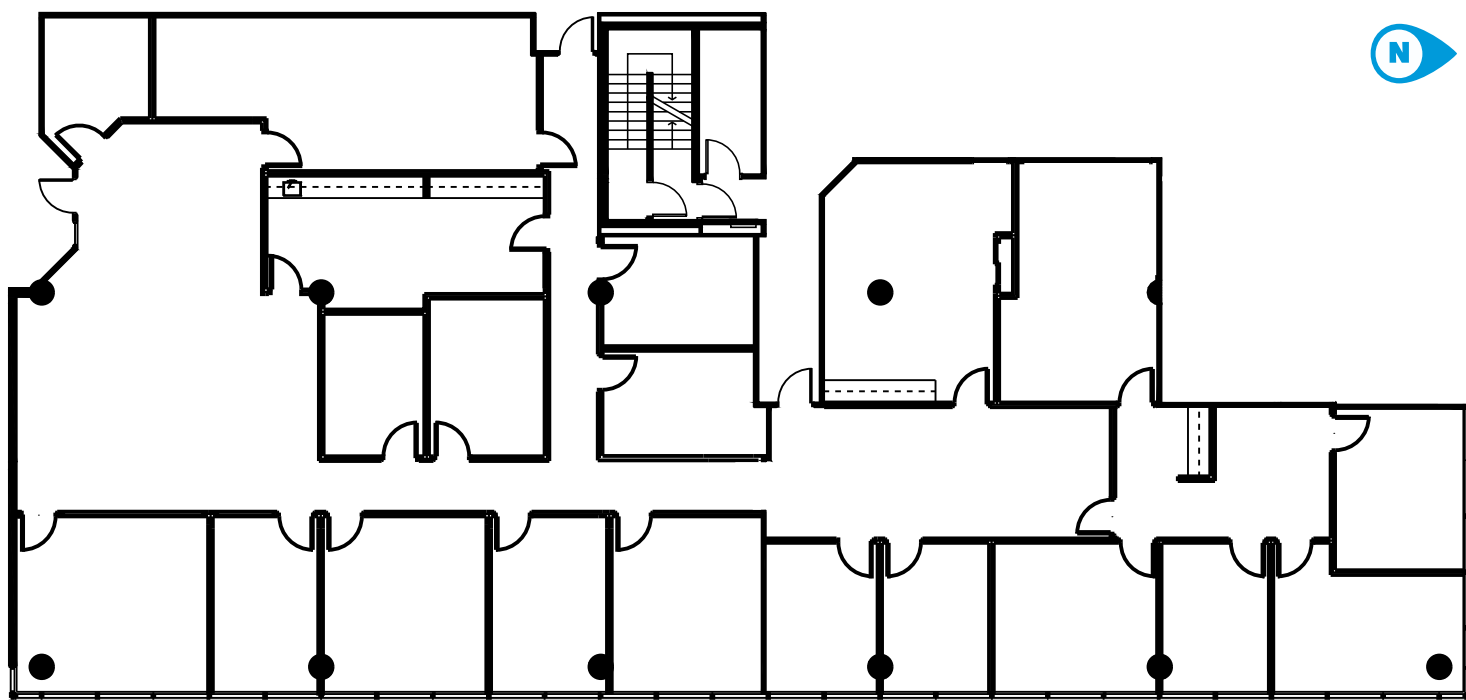


SUITE 130 & 140

±7,102 RSF

CONTIGUOUS SPACE

AVAILABLE
MARCH 1, 2026



SUITE	SIZE	LAYOUT	AVAILABILITY
130 & 140	±7,102 RSF	16 offices (11 exterior) 2 conference rooms, reception/lobby area, kitchen/break room, access to restrooms, elevator and stairs	March 1, 2026

JR BITZER

303 501 8778

jrbitzer@lee-associates.com

OFFICE SPACE FOR LEASE

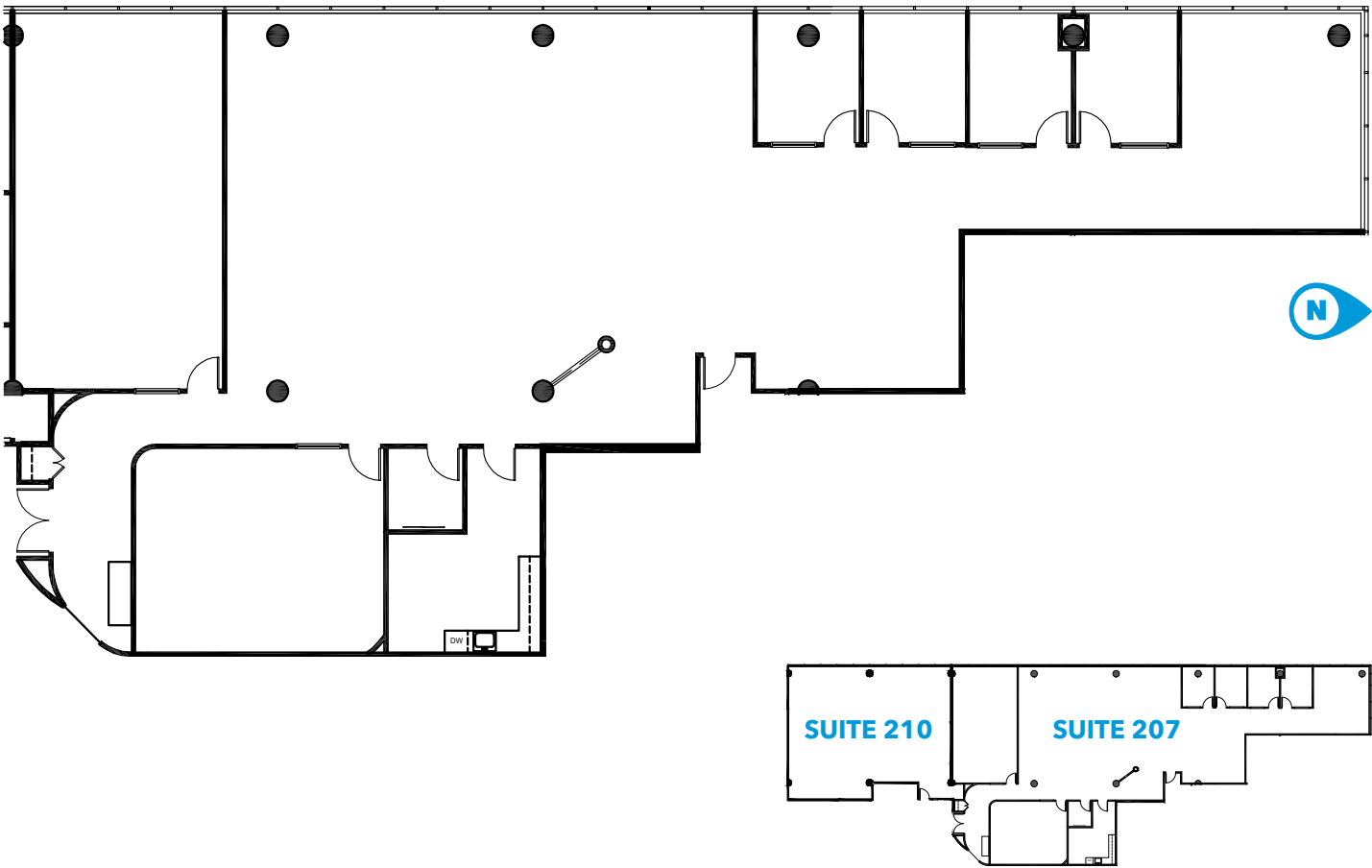
455 SHERMAN STREET

DENVER, COLORADO 80203



SUITE 207
±4,368 RSF
CONTIGUOUS WITH SUITE 210

AVAILABLE NOW



SUITE	SIZE	LAYOUT	AVAILABILITY
207	±4,368 RSF	1 office, 1 conference room, reception area, kitchen & break area, open workstation area, storage, access to restrooms, elevator and stairs	Available Now

JR BITZER
303 501 8778
jrbitzer@lee-associates.com

OFFICE SPACE FOR LEASE

455 SHERMAN STREET

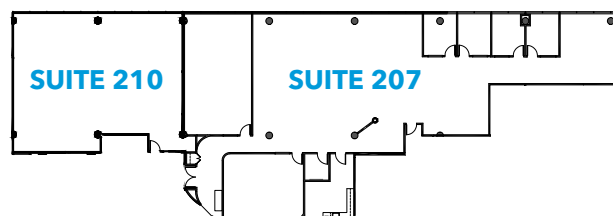
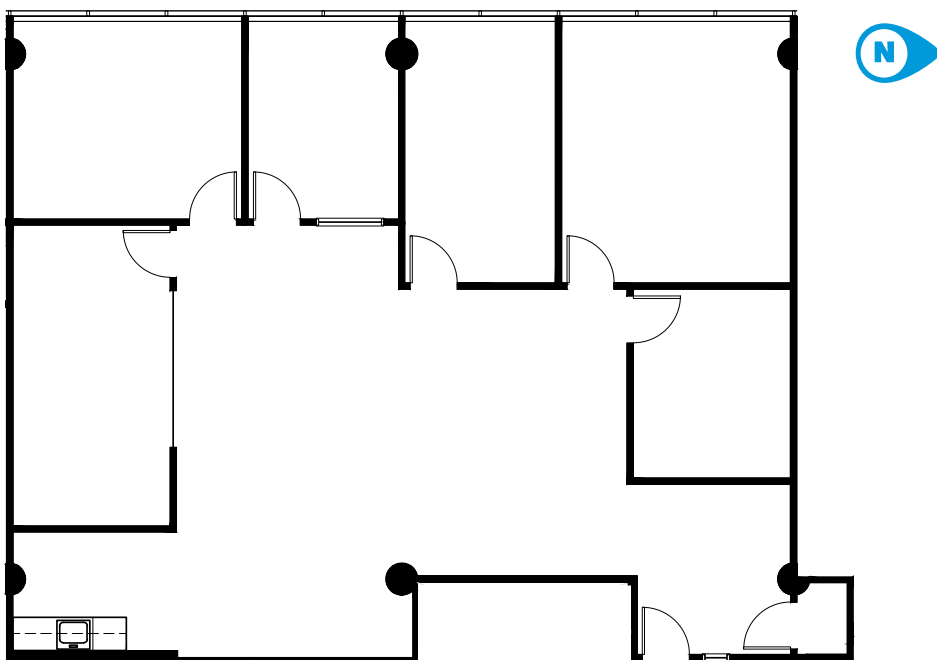
DENVER, COLORADO 80203



SUITE 210 ±2,370 RSF

CONTIGUOUS WITH SUITE 207

AVAILABLE
Q2 2026



SUITE	SIZE	LAYOUT	AVAILABILITY
210	±2,370 RSF	5 offices, conference room, reception area, kitchen & break area, open workstation area, access to restrooms, elevator and stairs	Available Q2 2026

JR BITZER

303 501 8778

jrbitzer@lee-associates.com

OFFICE SPACE FOR LEASE

455 SHERMAN STREET

DENVER, COLORADO 80203

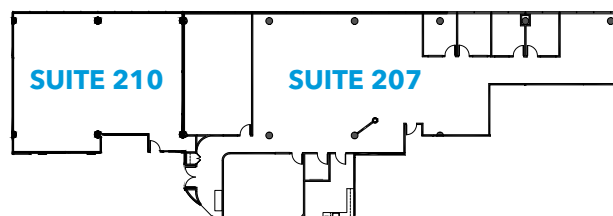
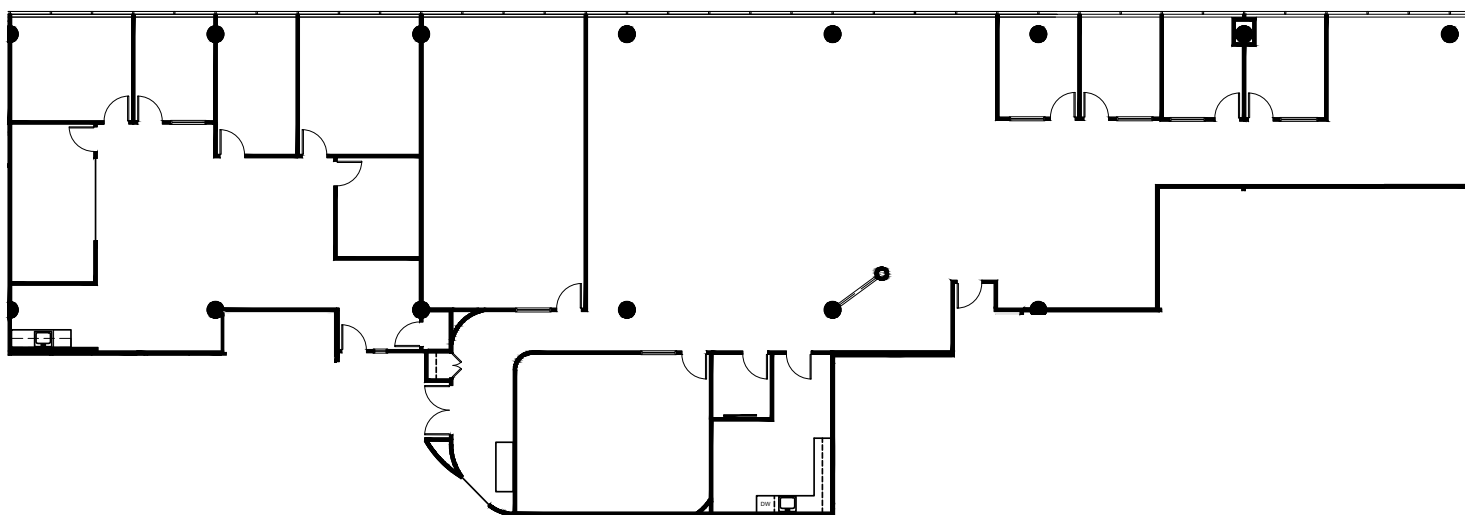


SUITE 207 & 210

±6,738 RSF

CONTIGUOUS SPACE

AVAILABLE
Q2 2026



SUITE	SIZE	LAYOUT	AVAILABILITY
207 & 210	±6,738 RSF	6 offices, 2 conference rooms, reception area, kitchen & break area, open workstation area, access to restrooms, elevator and stairs	Available Q2 2026

JR BITZER

303 501 8778

jrbitzer@lee-associates.com

OFFICE SPACE FOR LEASE

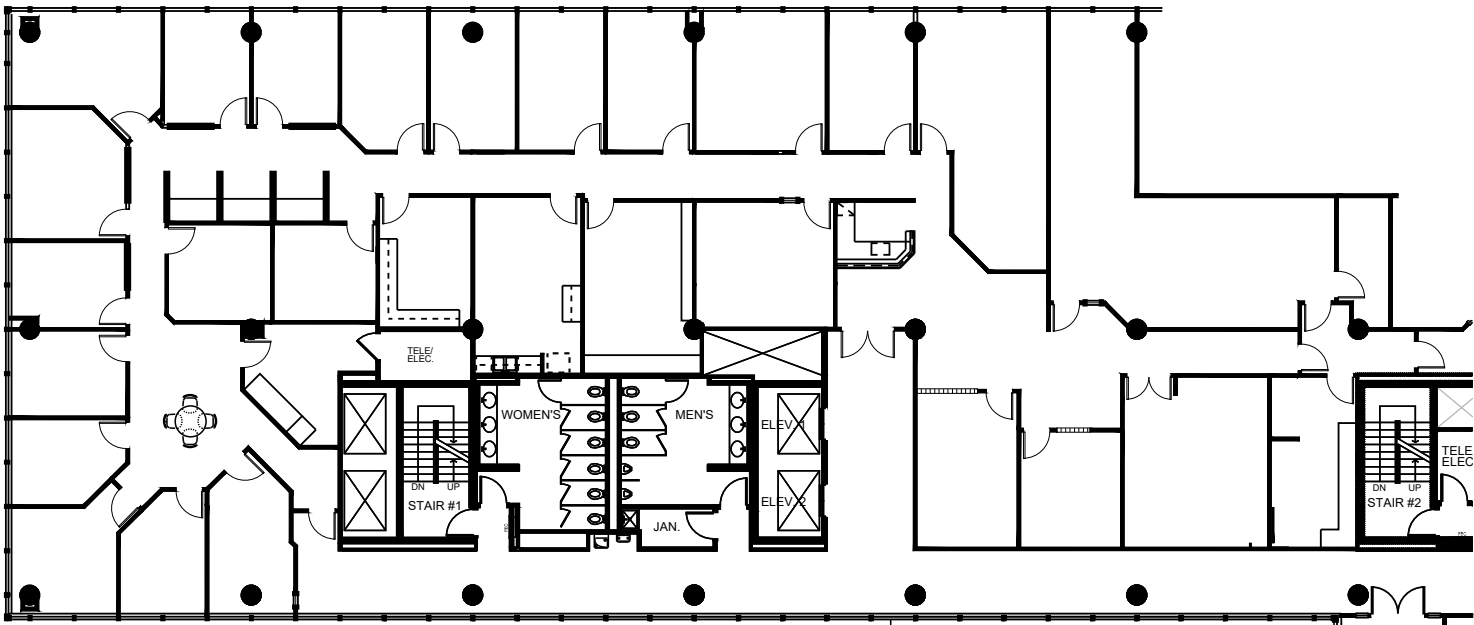
455 SHERMAN STREET

DENVER, COLORADO 80203



SUITE 500
±9,027 RSF

AVAILABLE NOW



SUITE	SIZE	LAYOUT	AVAILABILITY
500	±9,027 SF	Office intensive buildout with all offices on glass	Available Now

JR BITZER
303 501 8778
jrbitzer@lee-associates.com

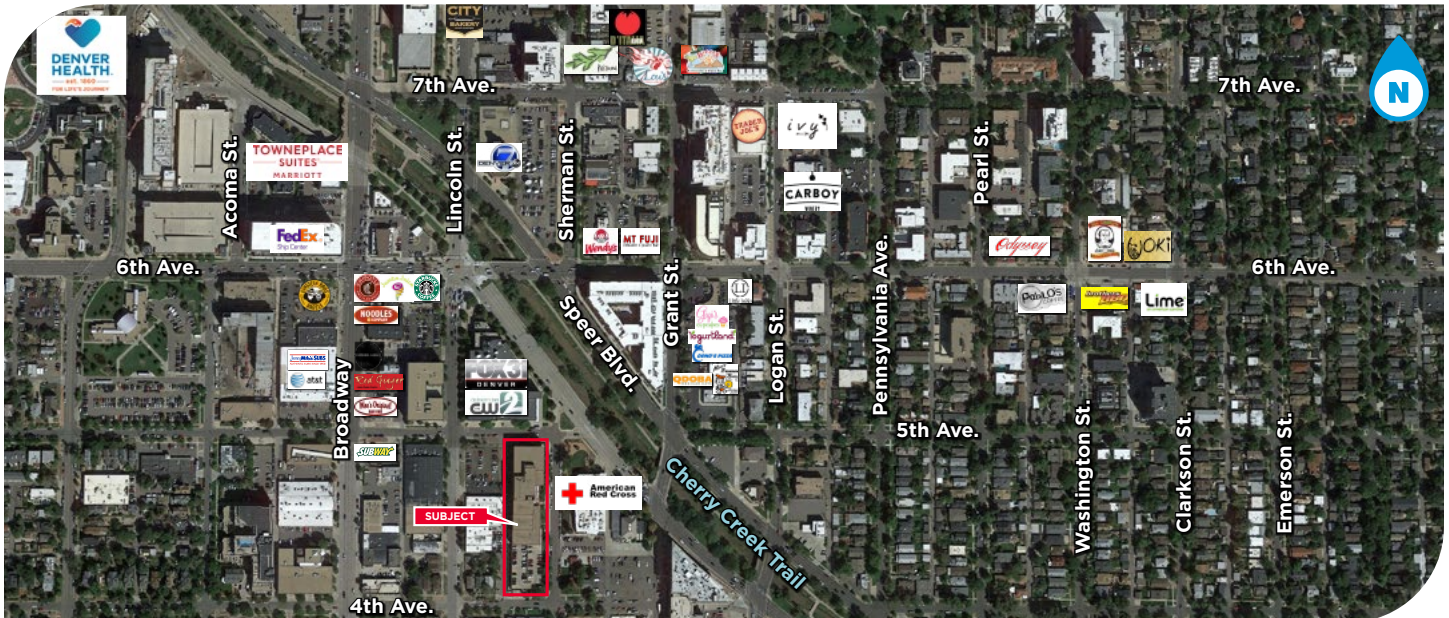
OFFICE SPACE FOR LEASE

455 SHERMAN STREET

DENVER, COLORADO 80203

LEE & ASSOCIATES
COMMERCIAL REAL ESTATE SERVICES

AERIAL



STREET PARKING OPTIONS



JR BITZER

303 501 8778

jrbitzer@lee-associates.com

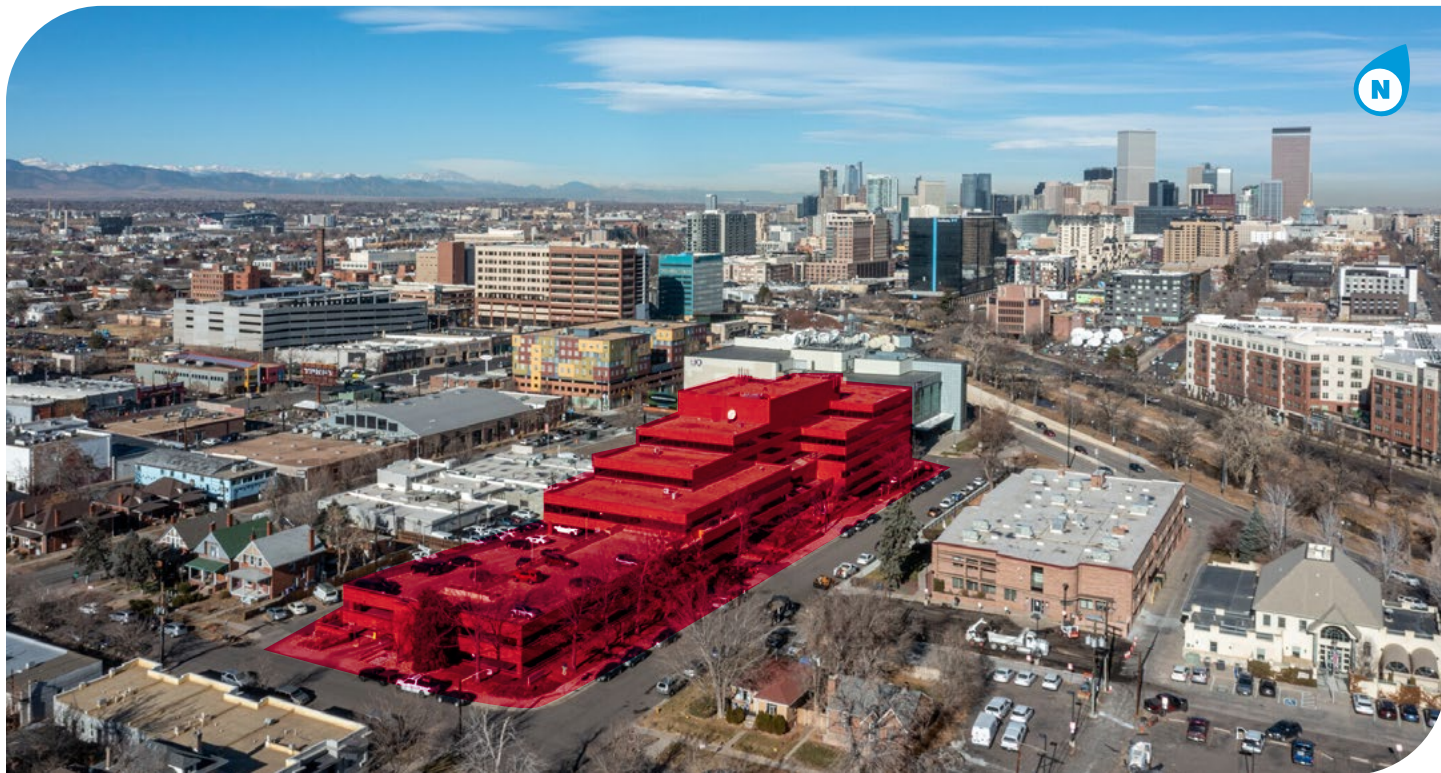
OFFICE SPACE FOR LEASE

455 SHERMAN STREET

DENVER, COLORADO 80203

LEE & ASSOCIATES
COMMERCIAL REAL ESTATE SERVICES

PROPERTY PHOTOS



EXTERIOR



LOBBY

JR BITZER

303 501 8778

jrbitzer@lee-associates.com