



SAN FRANCISCO, CA 94104

564 Market St.

FOR LEASE

**Renovated Historic
Office Building**
With 1920's Charm

TREVOR GUDIM

Executive Vice President
Email: trevor@calco-sf.com
Cell: 858.922.2632
DRE #01979980

JOHAN QUIE

Senior Vice President
Email: johan@calco-sf.com
Cell: 952.454.6763
DRE #01948103



We're Here to Help – Reach Out Today!

425 2nd St. Suite 450, San Francisco, CA 94107 | info@calcosf.com | (415) 970-0000 | calcosf.com

PROPERTY SUMMARY

| 564 Market St.

SUITE	RSF	AVAILABLE	RATE	NOTES
250	2,392	Immediately	\$55 / SF, Industrial Gross	Kitchenette, Wall To Wall Window Line, Operable Windows Elevator Access
305	1,922	Immediately	\$55 / SF, Industrial Gross	Kitchenette, Wall To Wall Window Line, Furnished, Operable Windows, Elevator Access



BUILDING ATTRIBUTES

| 564 Market St.

 **CALCO**
COMMERCIAL, INC.



**DOORMAN /
RECEPTIONIST**



**24/7 KEY CARD
ACCESS**



**SUTTER STREET & MARKET
STREET ENTRANCE**



**COMMON AREA
ROOFTOP GARDEN**



**ACROSS STREET FROM
ONE SANSOME PUBLIC
SPACE & HOLBROOK
HOUSE**



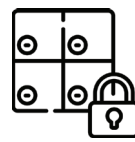
**SIX BLOCKS
FROM THE
FERRY BUILDING**



**CAFE AND
RESTAURANT ON
GROUND FLOOR**



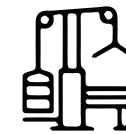
**IN-SUITE CATERING
FROM PER DIEM**



**BIKE ROOM, LOCKERS,
& PRIVATE STORAGE
AVAILABLE**



**FULLY RENOVATED
RESTROOMS & COMMON
AREAS**



**HEALTH CLUB COMING
SOON ON-SITE**



**TRANSIT ACCESSIBLE,
NEXT TO
MONTGOMERY
BART STATION**



PRIVATE PENTHOUSE GARDEN

| 564 Market St.

 CALCO
COMMERCIAL, INC.



SUITE ATTRIBUTES

| 564 Market St.

SUITE 250

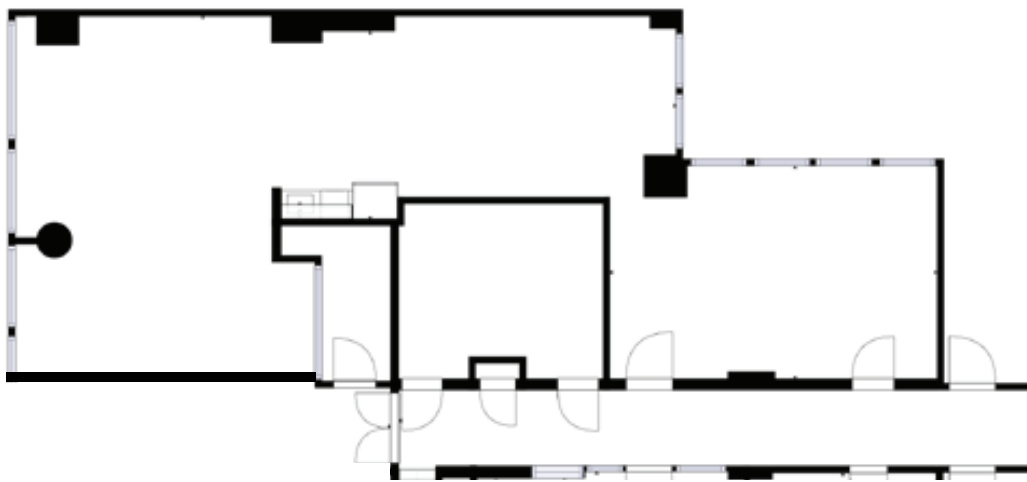
AVAILABLE SPACE | 2,329 Square Feet

RENTAL RATE | \$55, PSF, Industrial Gross

AVAILABLE | Immediately

SUITE NOTES

- Open Office Area to Accommodate up to 12 Workstations
- One Meeting Room
- Full Kitchenette (Dishwasher, Sink, Refrigerator)
- Lots of Natural Light
- LVT Flooring
- High Ceilings



SUITE ATTRIBUTES

| 564 Market St.

SUITE 305

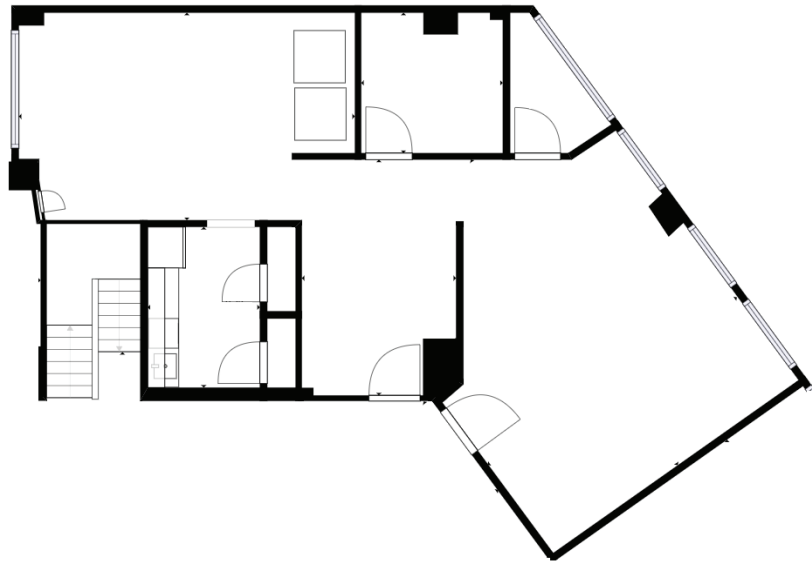
AVAILABLE SPACE | 1,922 Square Feet

RENTAL RATE | \$55, PSF, Industrial Gross

AVAILABLE | Immediately

SUITE NOTES

- Kitchenette
- Wall To Wall Window Line
- Furnished
- Operable Windows
- Elevator Access



 **CALCO**
COMMERCIAL, INC.



LOCATION OVERVIEW

| 564 Market St.



NEARBY AMENITIES

- 1 Yank Sing
- 2 Holbrook House
- 3 Bank of America
- 4 Palace Hotel
- 5 The Ritz-Carlton Club
- 6 Citibank
- 7 Indochino
- 8 Post Montgomery Garage
- 9 24 Hour Fitness
- 10 Starbucks
- 11 SF Marriot Marquis
- 12 Union Square
- 13 Sutter Stockton Garage
- 14 The Ritz-Carlton
- 15 Pine Street Garage
- 16 Mister Jiu's
- 17 Wayfare Tavern
- 18 Transamerica Pyramid
- 19 345 California Center Garage
- 20 Embarcadero Center Garage
- 21 24 Hour Fitness
- 22 Wells Fargo
- 23 Ace Parking
- 24 Salesforce Tower
- 25 LinkedIn
- 26 Slack
- 27 Quip, Inc
- 28 Facebook
- 29 Fitbit
- 30 Gap Headquarters
- 31 Waterbar
- 32 EPIC Steakhouse
- 33 Rincon Park
- 34 Yank Sing (Rincon)
- 35 Ferry Building



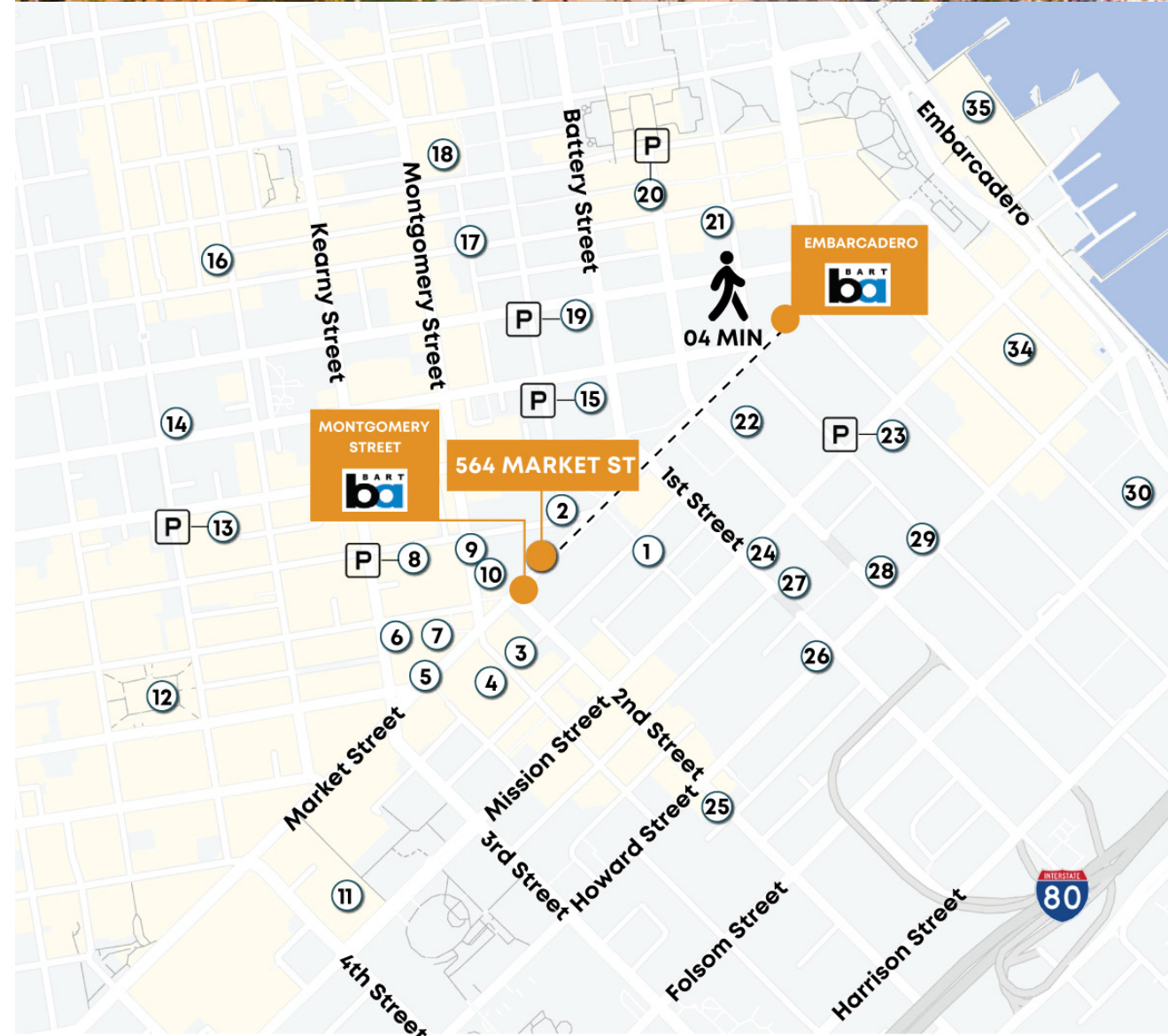
01 MIN to Montgomery Bart
05 MIN to Salesforce Park
10 MIN to Ferry Building



05 MIN to Union Square
05 MIN to North Beach
10 MIN to Mission Bay



08 MIN to Bay Bridge
08 MIN to 80-W



**TREVOR GUDIM**

Executive Vice President
Email: trevor@calco-sf.com
Cell: 858.922.2632
DRE #01979980

JOHAN QUIE

Senior Vice President
Email: johan@calco-sf.com
Cell: 952.454.6763
DRE #01948103

PIONEERING REAL ESTATE SOLUTIONS WITH PROVEN EXPERTISE

Calco Commercial, founded in 2011 by Scott Mason, brings over 35 years of experience and 2,500+ transactions, totaling over \$2.2 billion in sales and leases. Specializing in leasing and sales of commercial real estate in the San Francisco Bay Area and nationwide, we consistently rank as a top-producing firm. With deep knowledge of the Bay Area market, our team offers clients over three decades of expertise and exceptional customer service, providing the tools and guidance to navigate the ever-changing commercial real estate landscape.