

NEW OFFICE/WAREHOUSE LISTING



2-YEAR TERM REMAINING

SUBLEASE OPPORTUNITY

807 W. PROFESSIONAL PLACE

Chesapeake, Virginia, 23320



**CUSHMAN &
WAKEFIELD**

THALHIMER

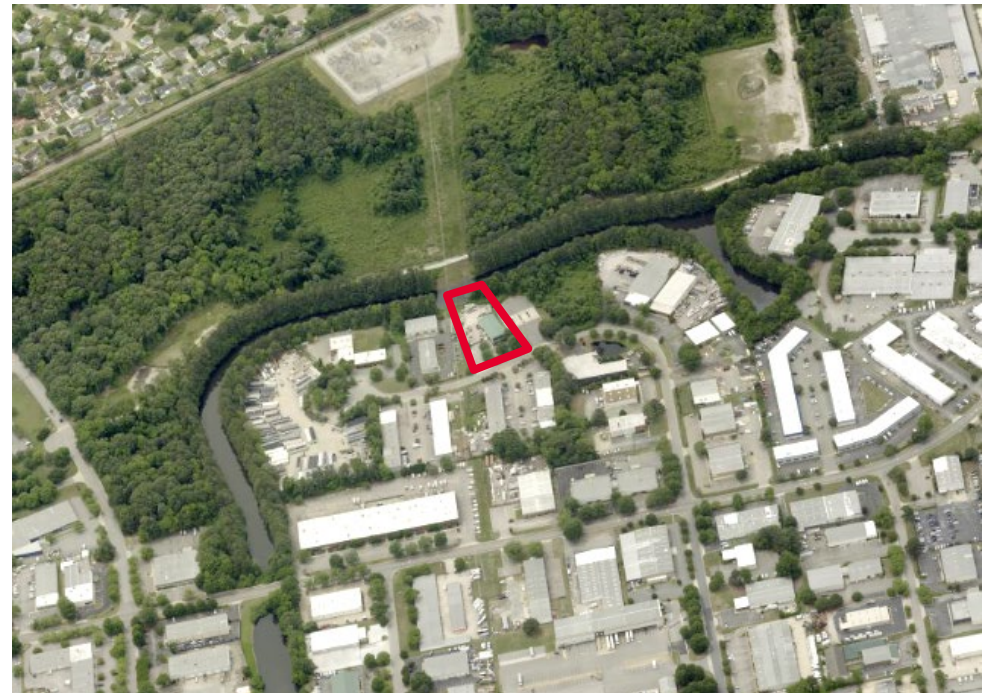
SPECIFICATIONS

Property Details

Year Built:	2004
Acres:	1.26 Acres
Building Size:	8,000 SF
Office Area:	4,720 SF 1 ST Floor: 2,720 SF 2nd Floor 2,000 SF
Warehouse:	3,280 SF Includes 720 SF mezzanine
Zoning:	PUD - Light Industrial
Clear Height:	20' peak - 16' eaves
Power:	Single-phase, 400 AMPS
Loading:	Two (2) 10' x 12' grade-level doors
Lease Rate:	\$9,470.30 / month, NNN (\$2.09)
Available:	For Sublease through May 31 st , 2027

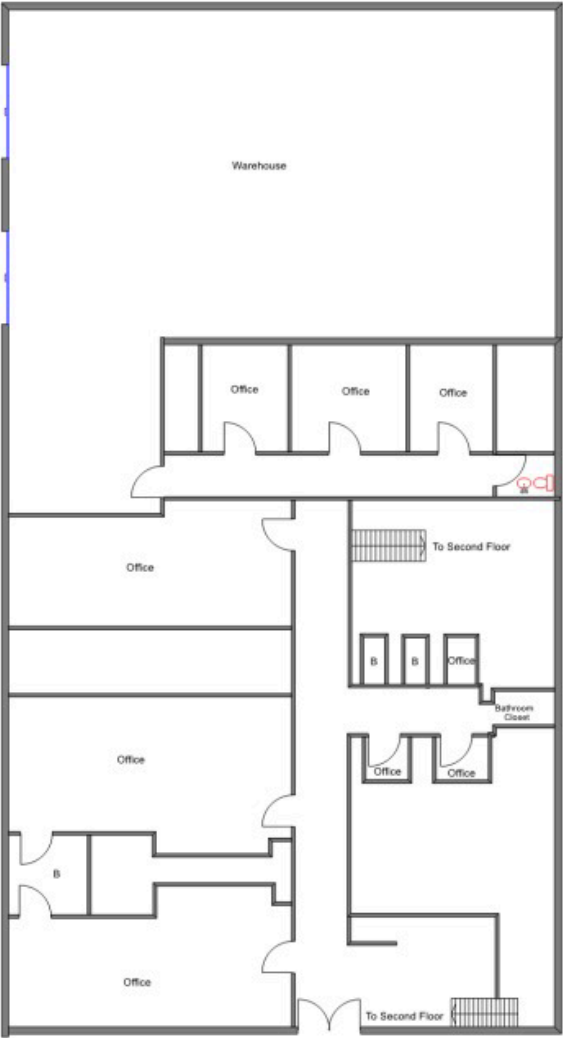
Highlights

- Fenced yard area
- Easy access to Greenbrier Parkway
- 2.2 miles to I-64 and 4.4 miles to I-464
- Ideal mix of warehouse, yard and dedicated office
- Masonry construction

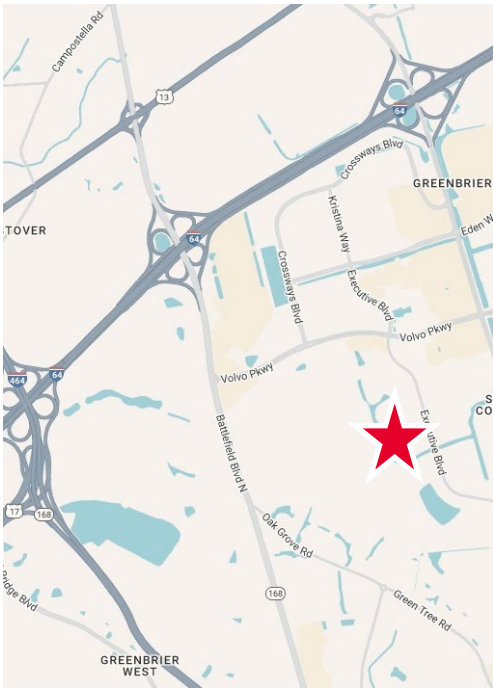
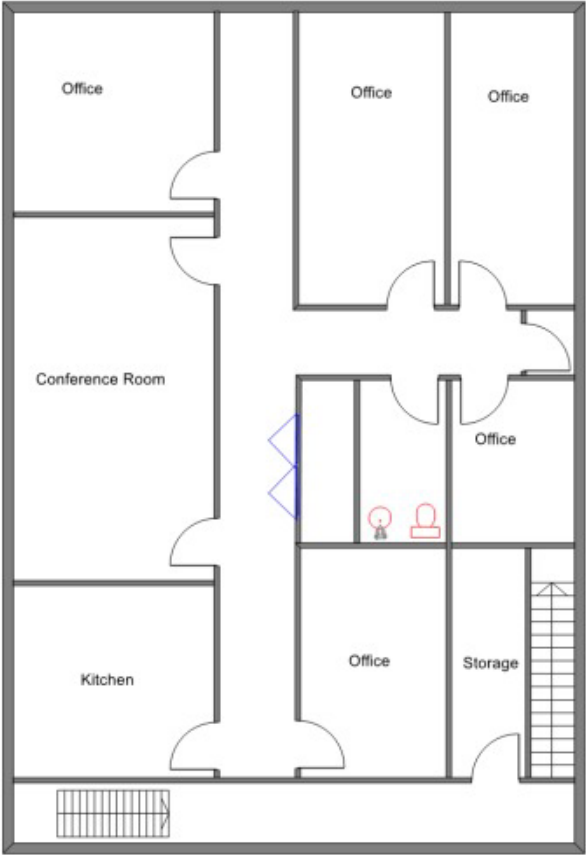


FLOOR PLANS

FIRST FLOOR
2,720 SF



SECOND FLOOR
2,000 SF



*NOT TO SCALE



**CUSHMAN &
WAKEFIELD**

THALHIMER

CONTACT

JANET WHITBECK

Senior Vice President

757 213 4147

janet.whitbeck@thalhimer.com

The Town Center of Virginia Beach
222 Central Park Avenue, Suite 1500
Virginia Beach, Virginia 23462
757 499 2900 | thalhimer.com



Independently Owned and Operated / A Member of the Cushman & Wakefield Alliance

Cushman & Wakefield | Thalhimer © 2025. No warranty or representation, express or implied, is made to the accuracy or completeness of the information contained herein, and same is submitted subject to errors, omissions, change of price, rental or other conditions, withdrawal without notice, and to any special listing conditions imposed by the property owner(s). As applicable, we make no representation as to the condition of the property (or properties) in question.