

201 NORTH MOUNTAIN RD.

PLAINVILLE, CONNECTICUT



AVAILABLE FOR LEASE

3,795 RSF SUITE IN A PREMIER OUTPATIENT MEDICAL FACILITY



GOMAN+YORK is pleased to offer a 3,795 Rentable SF suite in central CT's premier medical outpatient facility, located just 15 minutes west of Hartford and 20 minutes east of Waterbury. This suite, currently occupied for administrative use by a regional practice, can be modified to suit a variety of medical specialties. The property offers excellent accessibility from Interstate 84 as well as Routes 9, 72 and 372.



FOR MORE INFORMATION CONTACT

Rob Montesi | 860.866.7572 | rmontesi@gomanyork.com

©2024 GOMAN+YORK Property Advisors, LLC. The information above has been obtained from sources believed reliable. While we do not doubt its accuracy, we have not verified it and make no guarantee, warranty or representation about it. It is your responsibility to independently confirm its accuracy and completeness. You and your advisors should conduct a careful, independent investigation of the property to determine to your satisfaction the suitability of the property for your needs.

201 NORTH MOUNTAIN RD.

PLAINVILLE, CONNECTICUT



BUILDING DETAILS

THE PREMIER MEDICAL OUTPATIENT FACILITY IN CENTRAL CT

FEATURES

- State-of-the-art construction that recently opened in 2015, and is Energy Star rated
- “Class-A” environment, with world-class care serving a variety of healthcare specialties in the building
- Conveniently located near numerous shops and restaurants
- A warm and welcoming grand atrium, featuring a stone-inlaid fireplace and staircase, modern lighting, and seating for patients
- Ample and convenient parking, featuring a tenant drop-off area at the entrance with valet parking available
- The building offers a serene reflection garden for tenants and patients, which includes a walking path and a small pond to enjoy
- Proudly and professionally managed by the owner



PROPERTY ADVISORS

FOR MORE INFORMATION CONTACT

Rob Montesi | 860.866.7572 | rmontesi@gomanyork.com

©2024 GOMAN+YORK Property Advisors, LLC. The information above has been obtained from sources believed reliable. While we do not doubt its accuracy, we have not verified it and make no guarantee, warranty or representation about it. It is your responsibility to independently confirm its accuracy and completeness. You and your advisors should conduct a careful, independent investigation of the property to determine to your satisfaction the suitability of the property for your needs.

201 NORTH MOUNTAIN RD.

PLAINVILLE, CONNECTICUT



SUITE DETAILS

MEDICAL/ADMIN SPACE FOR LEASE: SUITE 302 - 3,795 RSF

AVAILABLE: February 1, 2025

LEASE RATE: TBD

FACILITY SIZE: 72,022 SF

FLOORS: 3 – Suite located on third floor

BUILDING CLASS: A

PARKING: 5.5/1,000 SF

ENERGY STAR RATING

& IREM: Certified

FEATURES

- 6 Offices along window line
- Conference Room for 10-12
- Large File Storage or Training Room
- Admin Space for 5-6
- Printer/Storage
- IT/Server Room
- 2 ADA Bathrooms

State-of-the-art construction, opened in 2015
Very strong referral base, final suite remaining.



PROPERTY ADVISORS

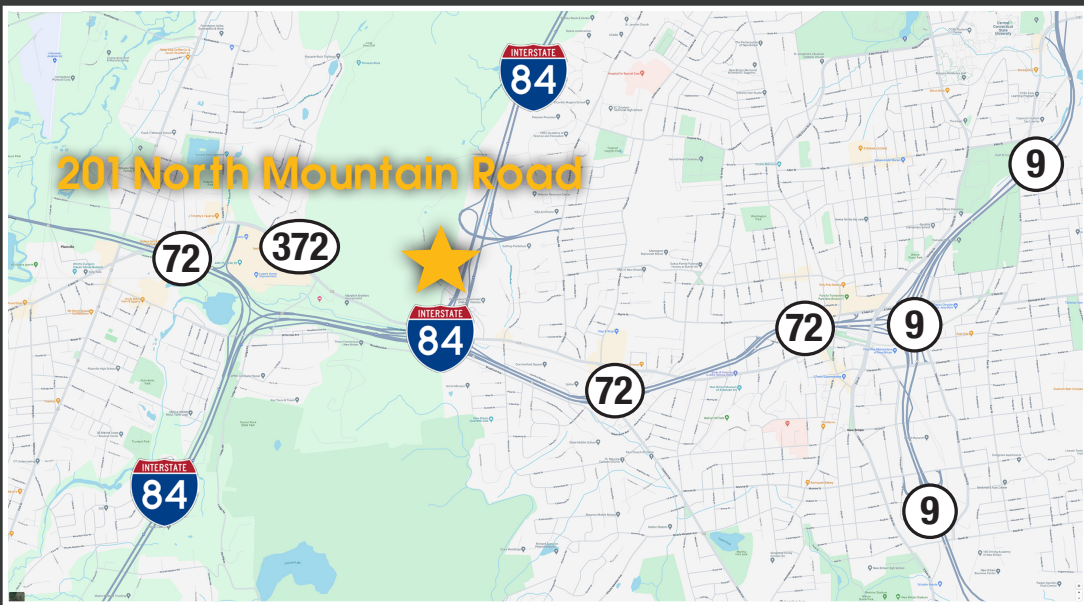
FOR MORE INFORMATION CONTACT

Rob Montesi | 860.866.7572 | rmontesi@gomanyork.com

©2024 GOMAN+YORK Property Advisors, LLC. The information above has been obtained from sources believed reliable. While we do not doubt its accuracy, we have not verified it and make no guarantee, warranty or representation about it. It is your responsibility to independently confirm its accuracy and completeness. You and your advisors should conduct a careful, independent investigation of the property to determine to your satisfaction the suitability of the property for your needs.

201 NORTH MOUNTAIN RD.

PLAINVILLE, CONNECTICUT



DRIVE TIMES

HARTFORD: 18 Minutes

BRADLEY INTERNATIONAL

AIRPORT: 35 Minutes

NEW HAVEN: 35 Minutes

WATERBURY: 20 Minutes

**Located adjacent to
Route 72, Route 372,
and just minutes from
Route 9, I-84, & I-91**



FOR MORE INFORMATION CONTACT

Rob Montesi | 860.866.7572 | rmontesi@gomanyork.com

©2024 GOMAN+YORK Property Advisors, LLC. The information above has been obtained from sources believed reliable. While we do not doubt its accuracy, we have not verified it and make no guarantee, warranty or representation about it. It is your responsibility to independently confirm its accuracy and completeness. You and your advisors should conduct a careful, independent investigation of the property to determine to your satisfaction the suitability of the property for your needs.

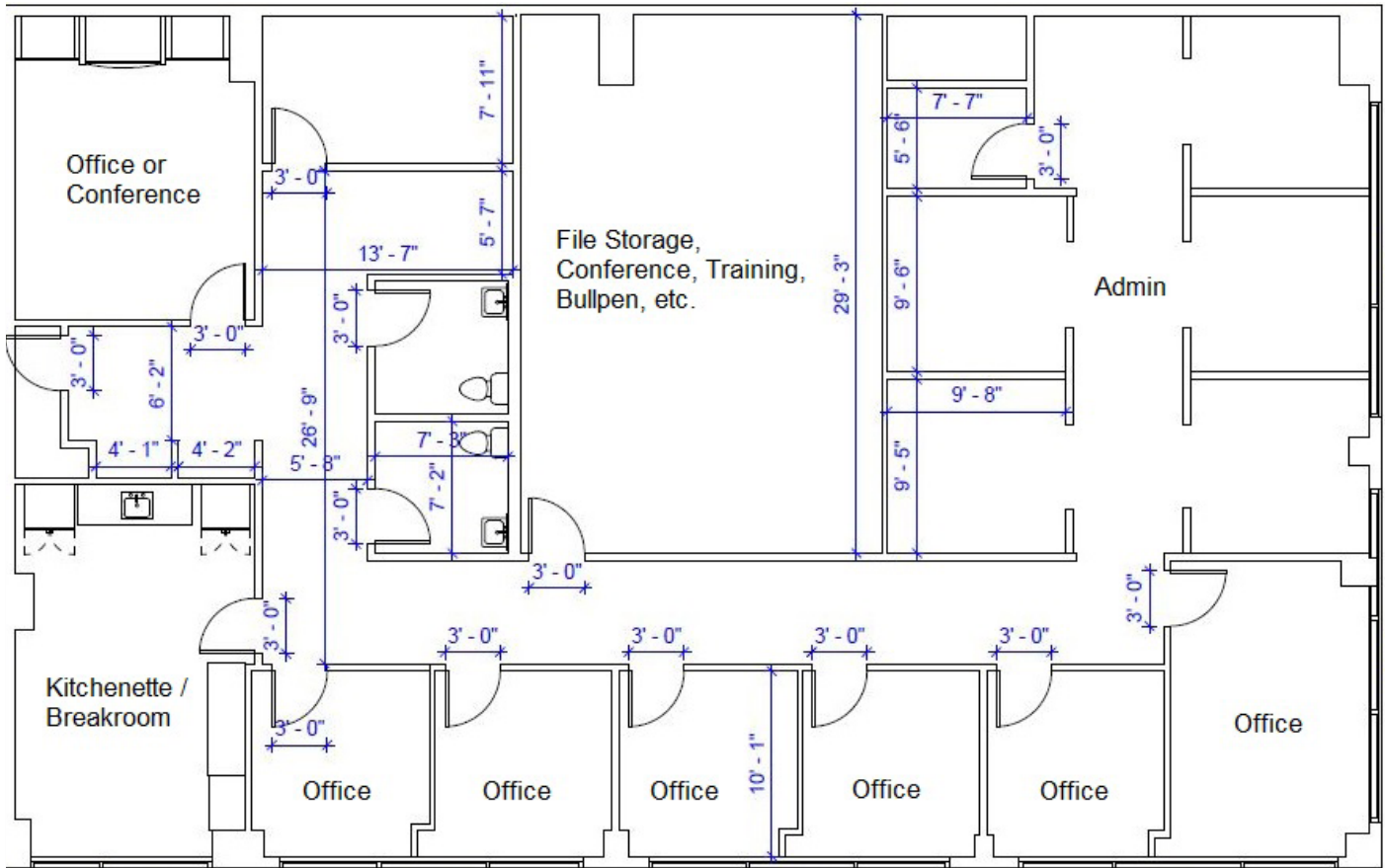
201 NORTH MOUNTAIN RD.

PLAINVILLE, CONNECTICUT

FLOOR PLAN

Suite 302: 3,795 RSF

AVAILABLE MEDICAL/MEDICAL ADMIN SPACE



IREM Certified Sustainable Property - 2022

Energy Star Certified - 2021, 2022, and 2023



[Click Here To See Virtual 3D Tour](#)

or Scan in QR Code



FOR MORE INFORMATION CONTACT

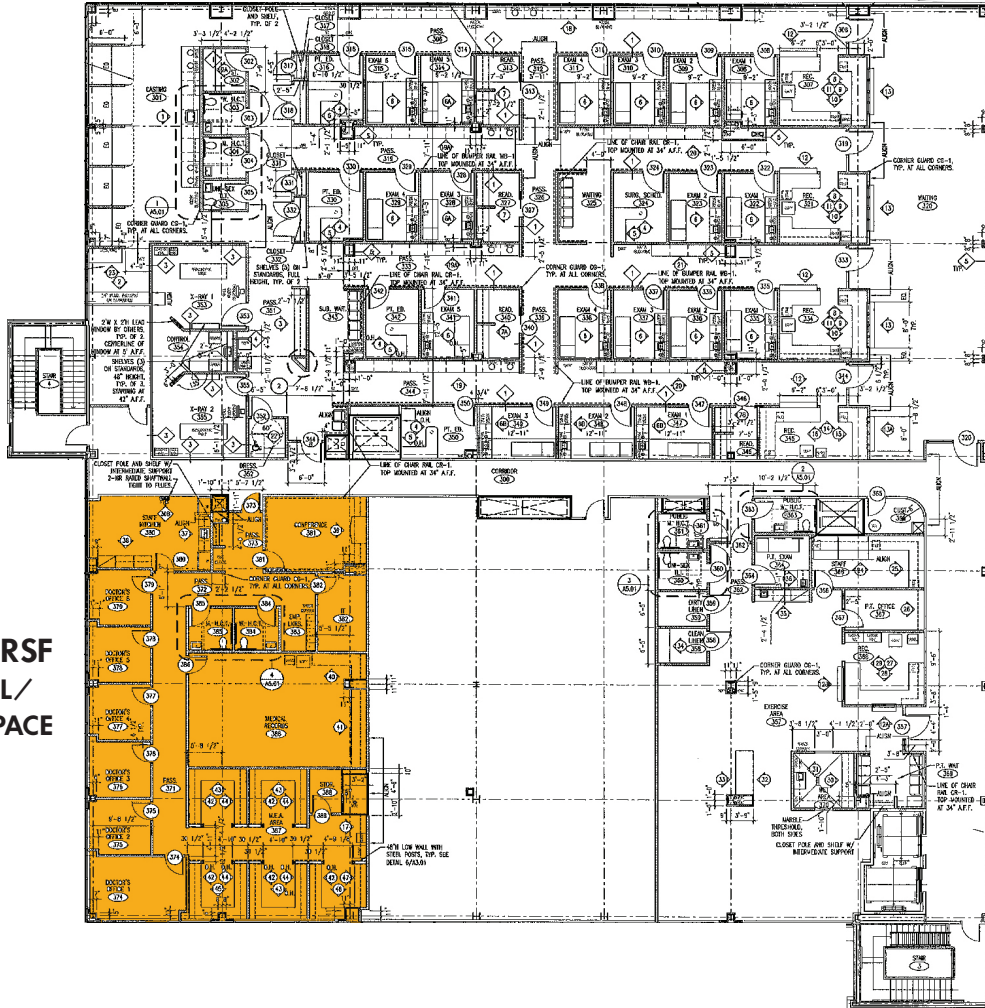
Rob Montesi | 860.866.7572 | rmontesi@gomanyork.com

©2024 GOMAN+YORK Property Advisors, LLC. The information above has been obtained from sources believed reliable. While we do not doubt its accuracy, we have not verified it and make no guarantee, warranty or representation about it. It is your responsibility to independently confirm its accuracy and completeness. You and your advisors should conduct a careful, independent investigation of the property to determine to your satisfaction the suitability of the property for your needs.

201 NORTH MOUNTAIN RD.

PLAINVILLE, CONNECTICUT

FLOORPLATE



Suite 302: 3,795 RSF
AVAILABLE MEDICAL/
MEDICAL ADMIN SPACE

Owned and Managed by
Healthpeak[®] | DOC LISTED NYSE

GOMAN+YORK
PROPERTY ADVISORS

FOR MORE INFORMATION CONTACT
Rob Montesi
rmontesi@gomanyork.com
860.866.7572

©2024 GOMAN+YORK Property Advisors, LLC. The information above has been obtained from sources believed reliable. While we do not doubt its accuracy, we have not verified it and make no guarantee, warranty or representation about it. It is your responsibility to independently confirm its accuracy and completeness. You and your advisors should conduct a careful, independent investigation of the property to determine to your satisfaction the suitability of the property for your needs.