



OFFICE FOR LEASE

135 GEORGE STREET NORTH
CAMBRIDGE, ON.

KEITH SCHAPPERT

Sales Representative

O: 519.743.5211 x 3030

C: 226 791 4230

kschappert@coldwellbankerpbr.com



ELISABETH KING

Broker of Record

O: 519.742.5800

C: 519-496-4720

ekingrealtor@bell.net



FOR LEASE

135 GEORGE STREET N.
CAMBRIDGE, ON.



OFFERING SUMMARY

UNIT 200:	668 SF \$22.00/SF
-----------	----------------------

UNIT 202:	1,304 SF \$22.00/SF
-----------	------------------------

UNIT 204:	1,900 SF \$24.00/SF
-----------	------------------------

UNITS 202-204:	3,204 SF \$24.00/SF
----------------	------------------------

ADDITIONAL RENT:	\$8.65/SQ. FT.
------------------	----------------

OCCUPANCY:	FLEXIBLE
------------	----------

ZONING:	C1
---------	----

PARKING:	AMPLE. ON-SITE
----------	----------------

LOFT OFFICE ON THE GRAND RIVER

Discover a unique brick-and-beam loft office situated directly across from the historic Cambridge Mill.

This charming space is a combination of open office space and private offices.

Location offers convenient access to scenic walking trails, ample parking, and all the amenities of downtown just steps away.

Join the community of Downtown Galt!

- Only 10 minutes from Highway 401
- Access to a shared kitchen
- Ground-floor dining with the soon-to-open Willibald Pizza

Be part of the vibrant Downtown Galt community—where history, convenience, and modern workspace meet.

KEITH SCHAPPERT

Sales Representative

O: 519.743.5211 x 3030

C: 226 791 4230

kschappert@coldwellbankerpbr.com



**COLDWELL BANKER
COMMERCIAL**

PETER BENNINGER
REALTY, BROKERAGE

ELISABETH KING

Broker of Record

O: 519.742.5800

C: 519-496-4720

ekingrealtor@bell.net



COLDWELL BANKER

PETER BENNINGER
REALTY, BROKERAGE

FOR LEASE

135 GEORGE STREET N.
CAMBRIDGE, ON.

UNIT 200



VIRTUAL
TOUR



KEITH SCHAPPERT

Sales Representative

O: 519.743.5211 x 3030

C: 226 791 4230

kschappert@coldwellbankerpbr.com



**COLDWELL BANKER
COMMERCIAL**

PETER BENNINGER
REALTY, BROKERAGE

ELISABETH KING

Broker of Record

O: 519.742.5800

C: 519-496-4720

ekingrealtor@bell.net



COLDWELL BANKER

PETER BENNINGER
REALTY, BROKERAGE

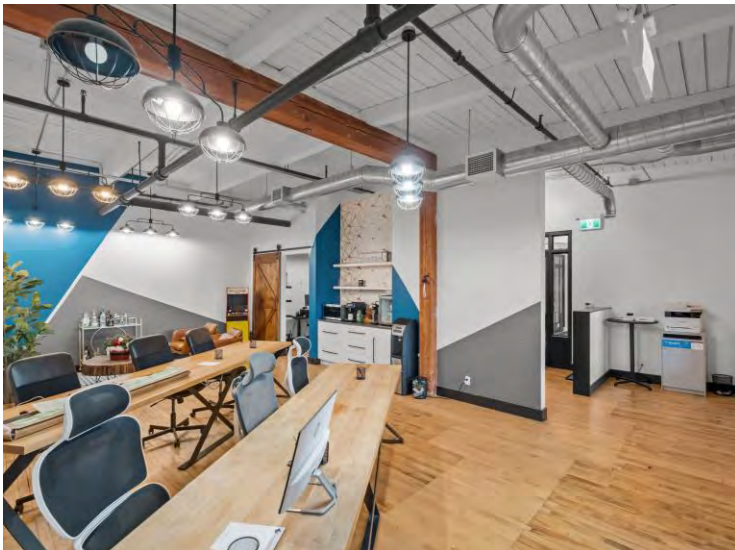
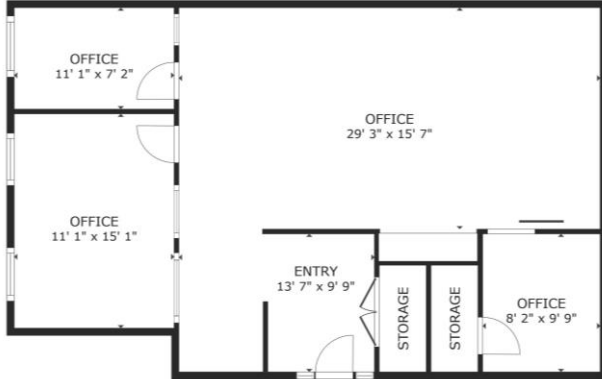
FOR LEASE

135 GEORGE STREET N.
CAMBRIDGE, ON.

UNIT 202



VIRTUAL
TOUR



KEITH SCHAPPERT

Sales Representative

O: 519.743.5211 x 3030

C: 226 791 4230

kschappert@coldwellbankerpbr.com



COLDWELL BANKER
COMMERCIAL

PETER BENNINGER
REALTY, BROKERAGE

ELISABETH KING

Broker of Record

O: 519.742.5800

C: 519-496-4720

ekingrealtor@bell.net



COLDWELL BANKER

PETER BENNINGER
REALTY, BROKERAGE

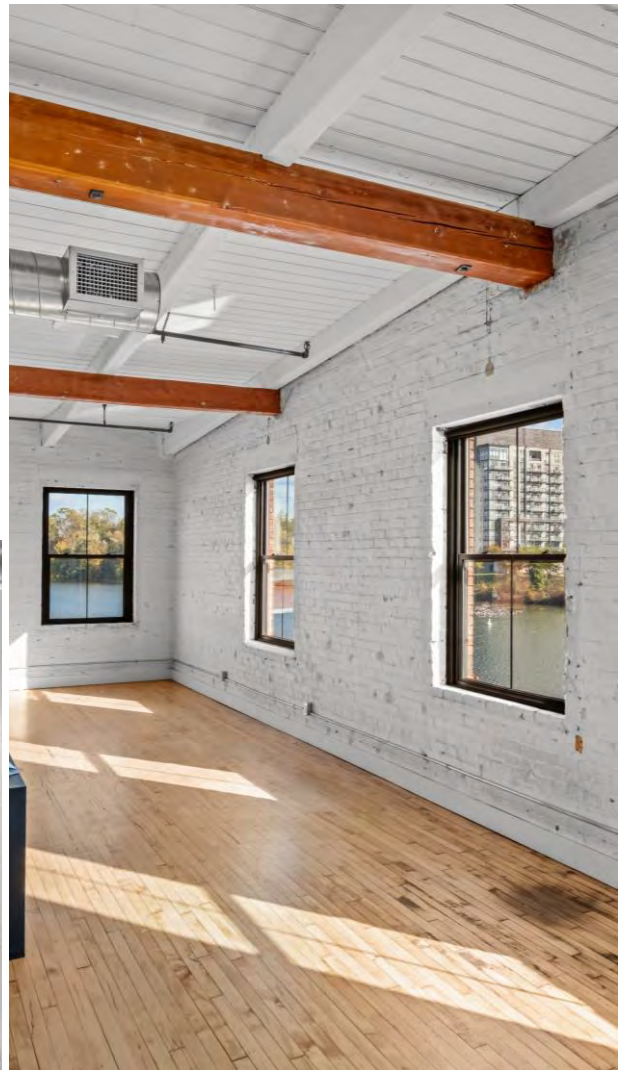
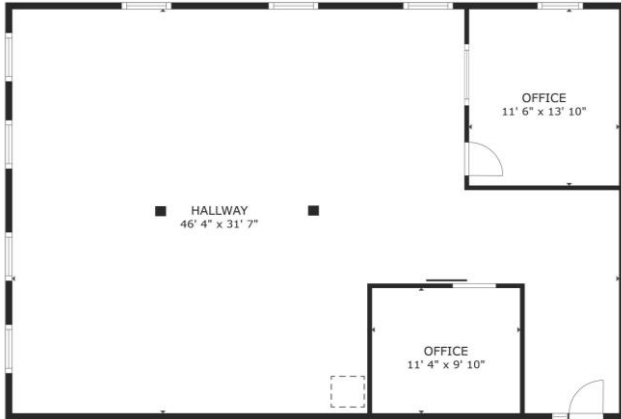
FOR LEASE

135 GEORGE STREET N.
CAMBRIDGE, ON.

UNIT 204



VIRTUAL
TOUR



KEITH SCHAPPERT

Sales Representative

O: 519.743.5211 x 3030

C: 226 791 4230

kschappert@coldwellbankerpbr.com



**COLDWELL BANKER
COMMERCIAL**

PETER BENNINGER
REALTY, BROKERAGE

ELISABETH KING

Broker of Record

O: 519.742.5800

C: 519-496-4720

ekingrealtor@bell.net

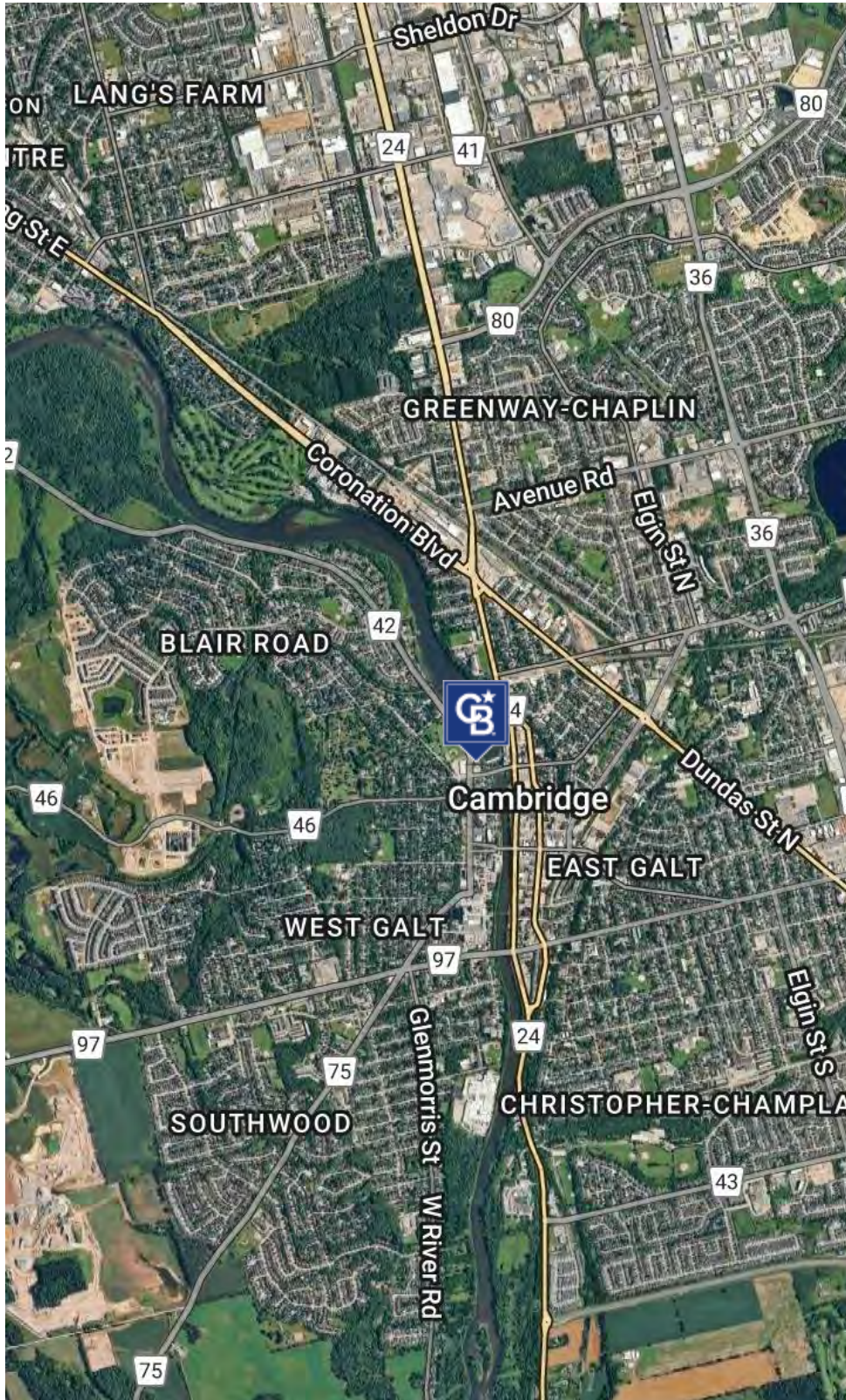


COLDWELL BANKER

PETER BENNINGER
REALTY, BROKERAGE

FOR LEASE

135 GEORGE STREET N.
CAMBRIDGE, ON.



135 GEORGE STREET N. CAMBRIDGE, ON.

Perfectly situated in the heart of Downtown Galt, offering a unique mix of historic charm and modern convenience. Just steps from the scenic Grand River and walking trails, this vibrant location puts you close to everything your business needs.

LOCATION HIGHLIGHTS:

- Across from the historic Cambridge Mill
- Surrounded by cafes, restaurants, and boutique shops
- Easy access to Highway 401 (just 10 minutes away)
- Close to public transit, with stops nearby
- Ample on-site parking for staff and clients
- Walking distance to local amenities and riverside trails

Experience a workspace that combines character, accessibility, and community in Downtown Galt.

KEITH SCHAPPERT

Sales Representative

O: 519.743.5211 x 3030

C: 226 791 4230

kschappert@coldwellbankerpbr.com



**COLDWELL BANKER
COMMERCIAL**

PETER BENNINGER
REALTY, BROKERAGE

ELISABETH KING

Broker of Record

O: 519.742.5800

C: 519-496-4720

ekingrealtor@bell.net



COLDWELL BANKER

PETER BENNINGER
REALTY, BROKERAGE