

# 3201 Lebanon Road

Danville, KY | 40422

[www.cbre.com/louisville](http://www.cbre.com/louisville)

821,000+/- SF | 100+/- Acres



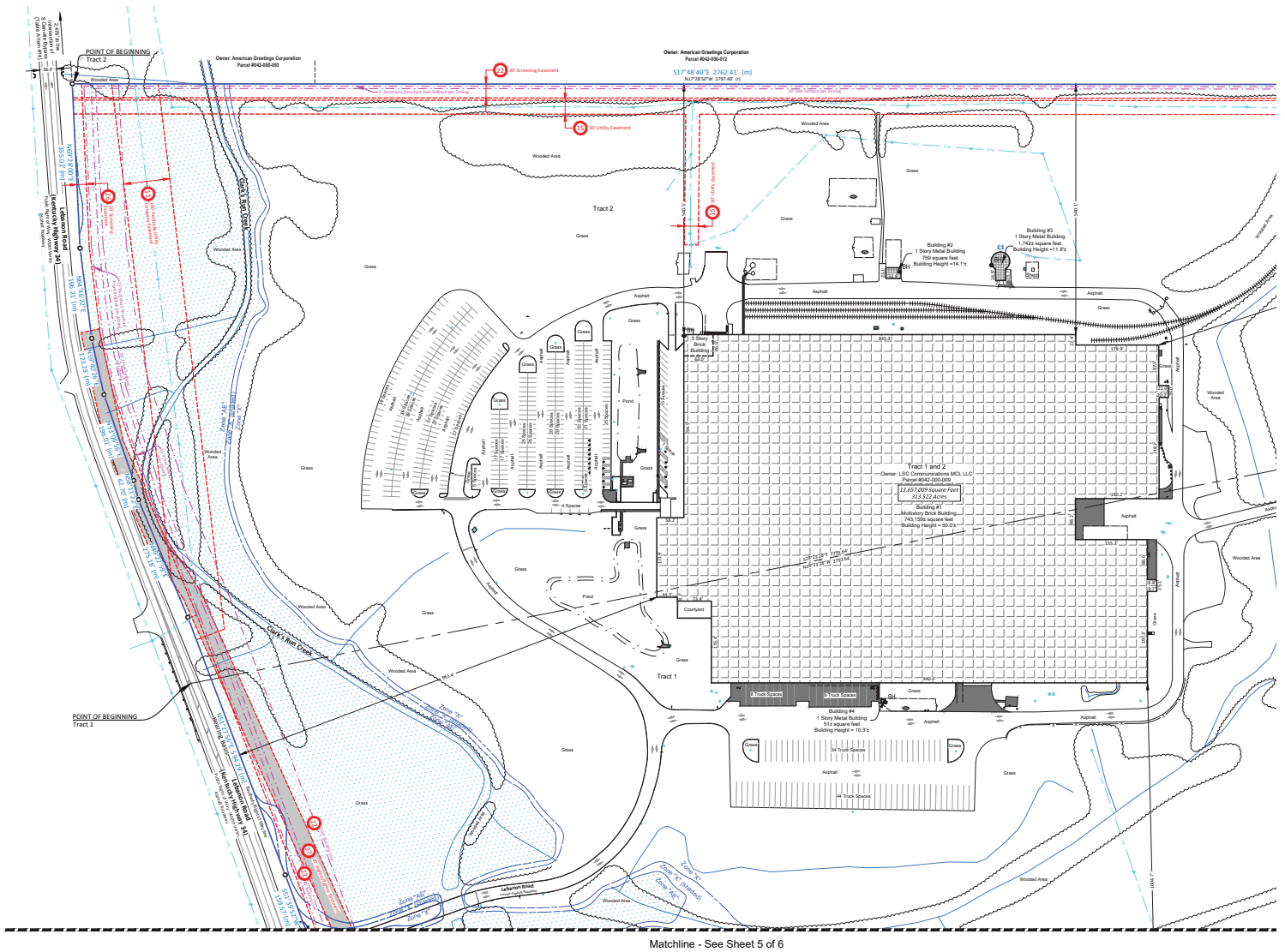
## Property Highlights

- 821,000+/- SF
- 100+/- acres
- 215+/- additional acres available for purchase
- 32' - 57' clear height
- 27 dock doors
- 1 drive-in door
- Rail available (interior and exterior)
- 15 megawatts
- 12,370 volts
- (12) 480V substations
- 12 substations each w/ 2,000 amps
- Constructed in 1985 with updates in 2007 & 2008
- 34 miles to Lexington, KY
- 83 miles to Louisville, KY
- 120 miles to Cincinnati, OH
- For Lease: \$4.25/SF/YR, NNN
- For Sale: \$29,500,000.00

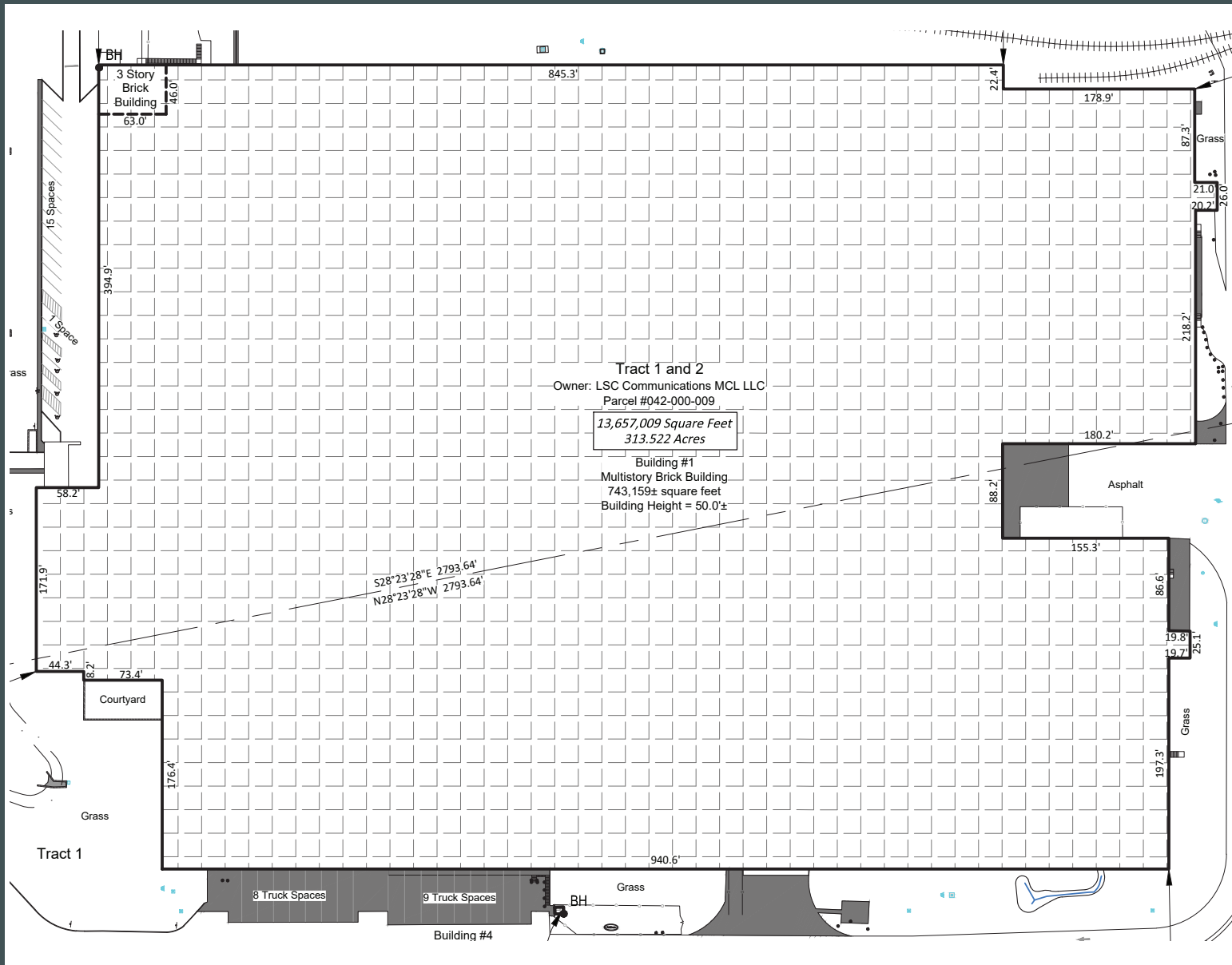
## Contact Us

Doug Butcher, SIOR  
Executive Vice President  
+1 502 412 7641  
[doug.butcher@cbre.com](mailto:doug.butcher@cbre.com)

Site Plan

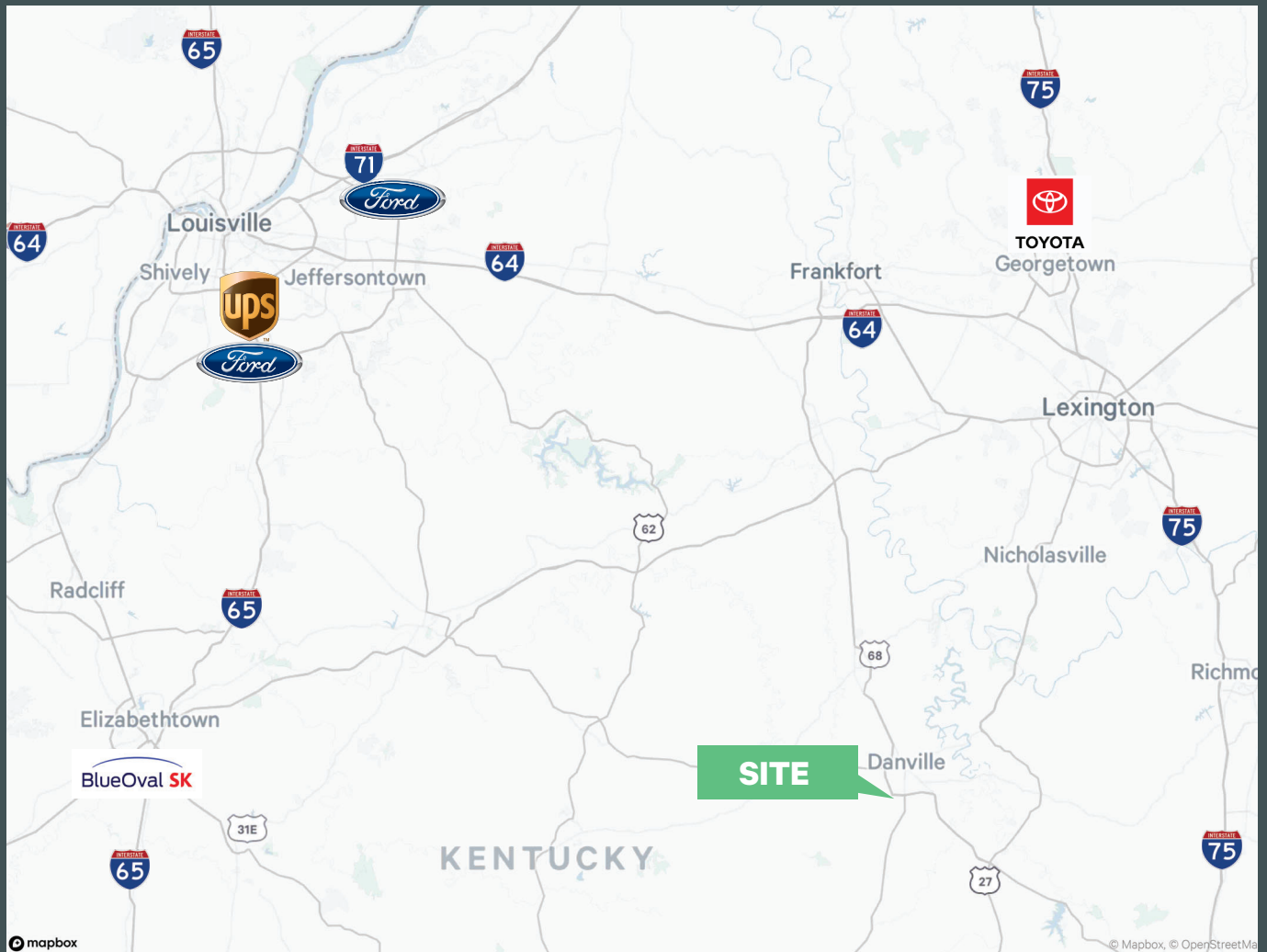


## Floor Plan



3201 Lebanon Road

Danville, KY 40422



## Contact Us

**Doug Butcher, SIOR**  
Executive Vice President  
+1 502 412 7641  
doug.butcher@cbre.com



© 2024 CBRE, Inc. All rights reserved. This information has been obtained from sources believed reliable, but has not been verified for accuracy or completeness. You should conduct a careful, independent investigation of the property and verify all information. Any reliance on this information is solely at your own risk. CBRE and the CBRE logo are service marks of CBRE, Inc. All other marks displayed on this document are the property of their respective owners, and the use of such logos does not imply any affiliation with or endorsement of CBRE. Photos herein are the property of their respective owners. Use of these images without the express written consent of the owner is prohibited.