



COMMERCIAL

EVENT VENUE WITH A WIDE VARIETY OF COMMERCIAL USES

1212 Packing House Rd. | Graham, TX



Williamstrew 
A DIVISION OF EBBY HALLIDAY REAL ESTATE, INC.

LISTED BY STEPHEN REICH GROUP OF WILLIAMS TREW REAL ESTATE

PROPERTY SUMMARY

DESCRIPTION

Discover this beautifully designed 6,000 sq. ft. air-conditioned event venue situated on 2 acres just outside the city limits of Graham, TX. Built in 2013, this versatile property offers an ideal setting for weddings, corporate events, private parties, or a wide variety of commercial uses. The main building features a spacious open floor plan with high ceilings and ample natural light, creating an inviting atmosphere for gatherings large or small. A commercial kitchen is in place for catering. The covered 2,000 sq. ft. patio provides additional space for outdoor entertaining, dining, or live music — all while showcasing stunning hill country views that make every event memorable. Music can be piped throughout the space. With approximately 85 designated parking spaces, guests will appreciate the easy access and convenience. Located outside city limits, the property allows for more flexible business operations while remaining close to town amenities and lodging. Whether you're an investor seeking a turnkey event center or an entrepreneur looking to bring a new vision to life, this property offers endless potential in a scenic and sought-after North Texas location.

LOCATION

CITY	Graham
County	Young
Driving Directions	From downtown Graham, go South on Hwy 16, veer to the right on Packing House Road, past Buchanan's Hardware.

OFFER SUMMARY

List Price	\$699,500
Lot Size	2 acres

HIGHLIGHTS

6,000 SF BUILDING	85 PARKING SPACES
COMMERCIAL KITCHEN	2 ACRES OUTSIDE THE CITY LIMITS
2,000 SF COVERED PATIO	TURNKEY EVENT CENTER

LISTING PRESENTED BY:



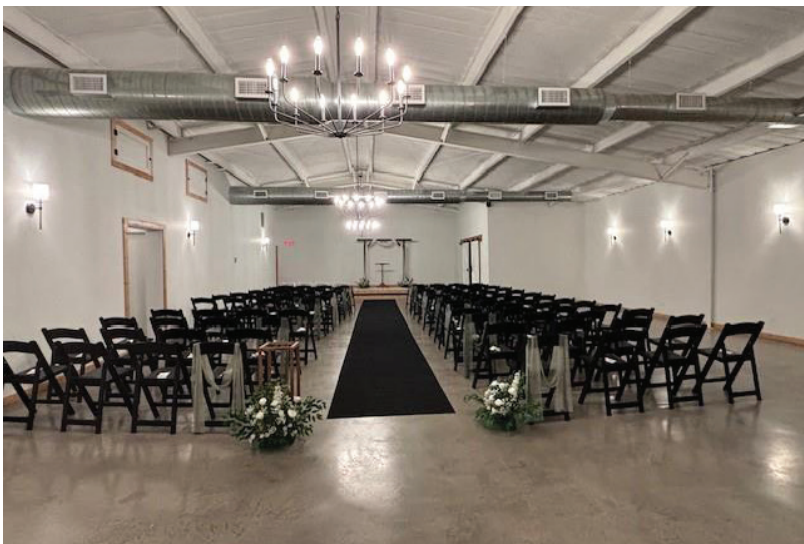
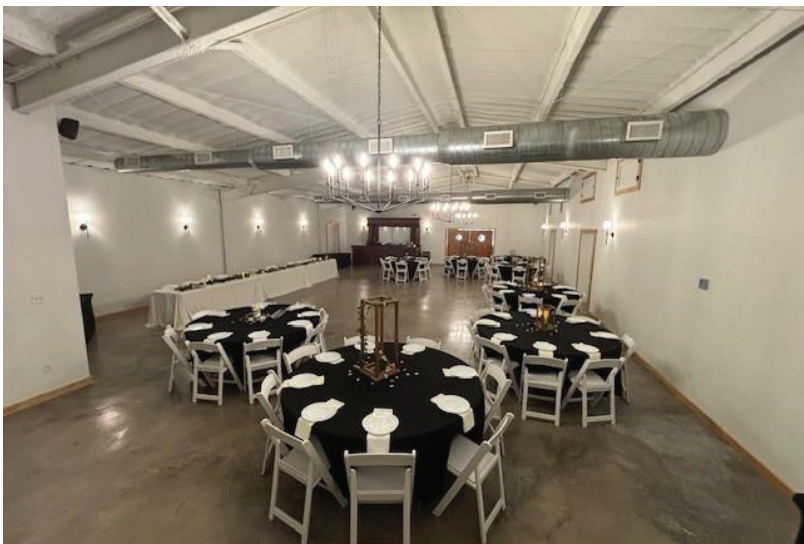
STEPHEN REICH
817-597-8884
stephen.reich@williamstrew.com



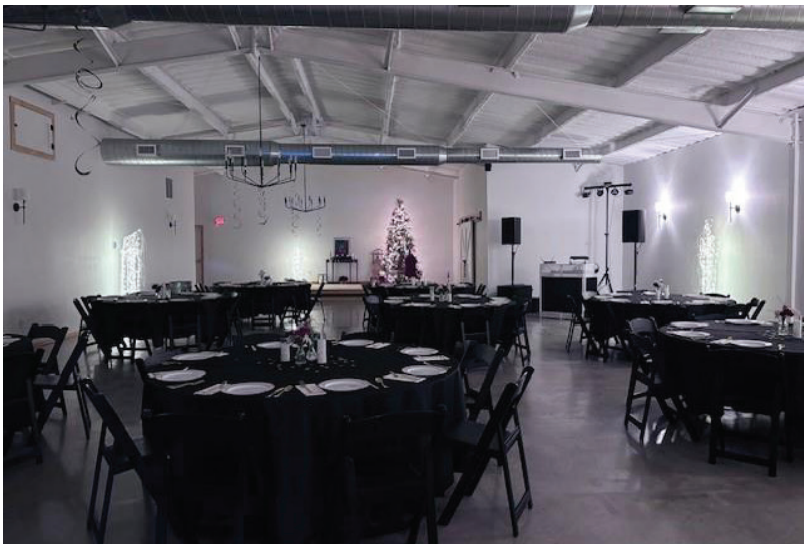
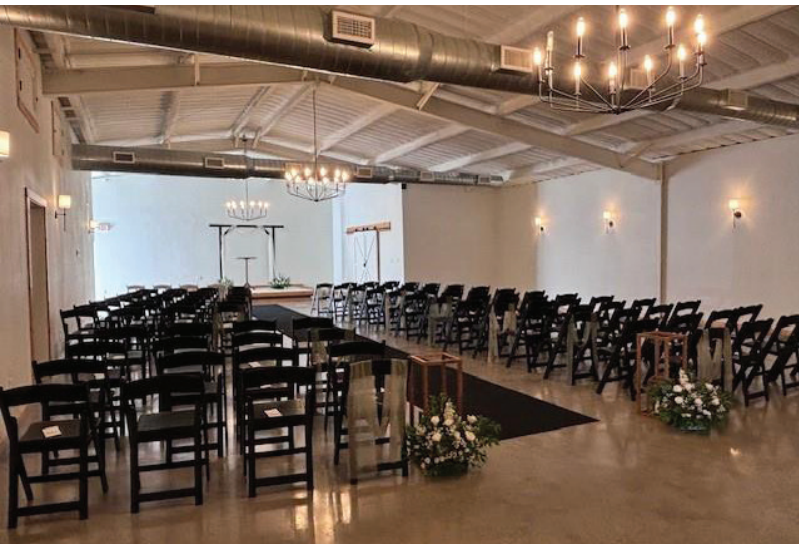
PROPERTY WEBSITE LINK:
stephenreichgroup.com/21089806



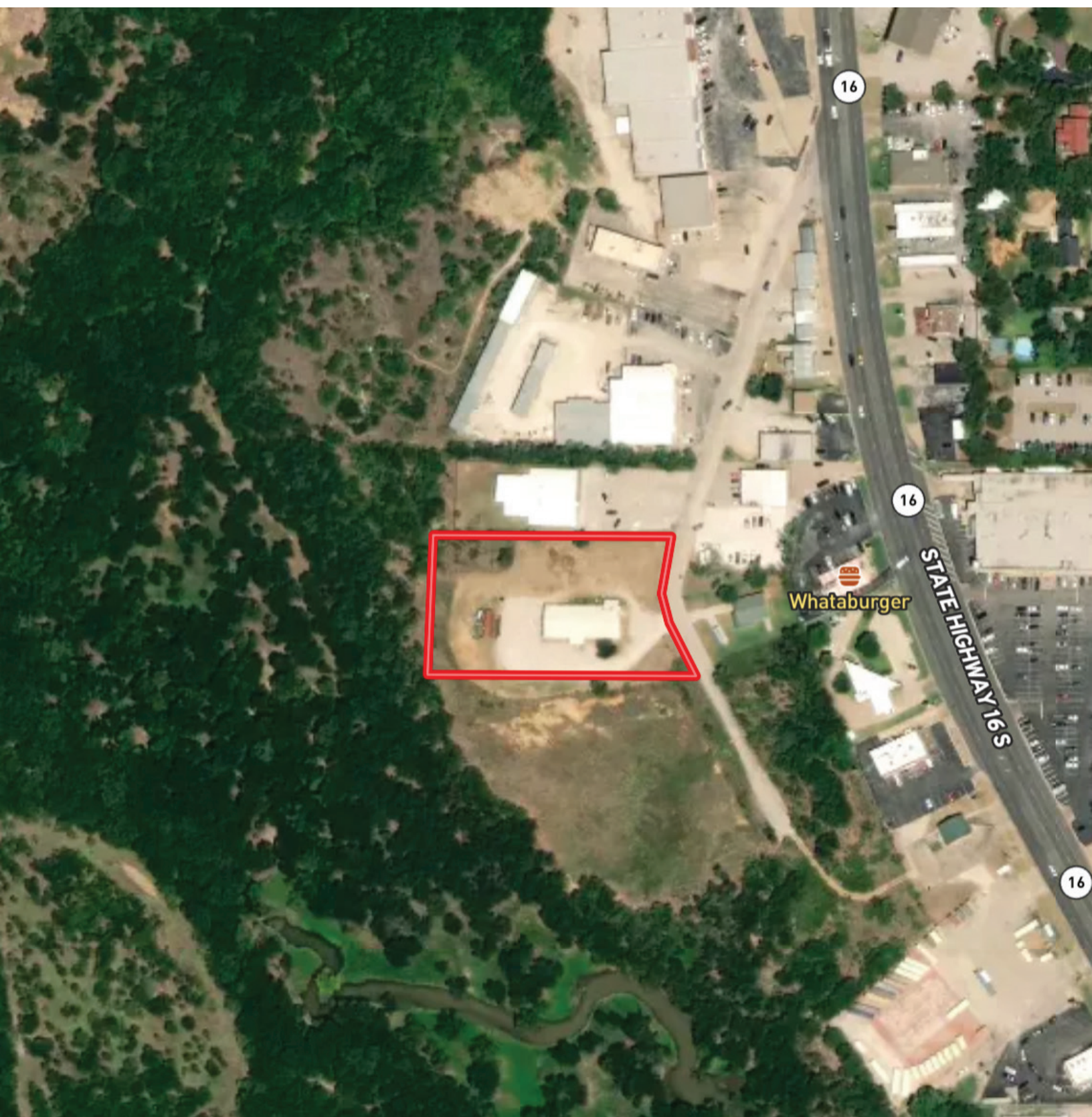
PROPERTY PHOTOS



PROPERTY PHOTOS



AERIAL MAP



CONTOUR LINES & FLOODPLAIN

