

Boones Ferry Business Park, Building B

12,492 SF FREESTANDING BUILDING

17858 SW UPPER BOONES FERRY RD | DURHAM, OR 97224



Stu Peterson, SIOR
503.972.7288
stu@macadamforbes.com
Licensed in OR & WA

2 Centerpointe Drive, Suite 500 | Lake Oswego, OR 97035 | WWW.MACADAMFORBES.COM | 503.227.2500

All of the information contained herein was obtained either from the owner or other parties we consider reliable. We have no reason to doubt its accuracy, however we do not guarantee it.

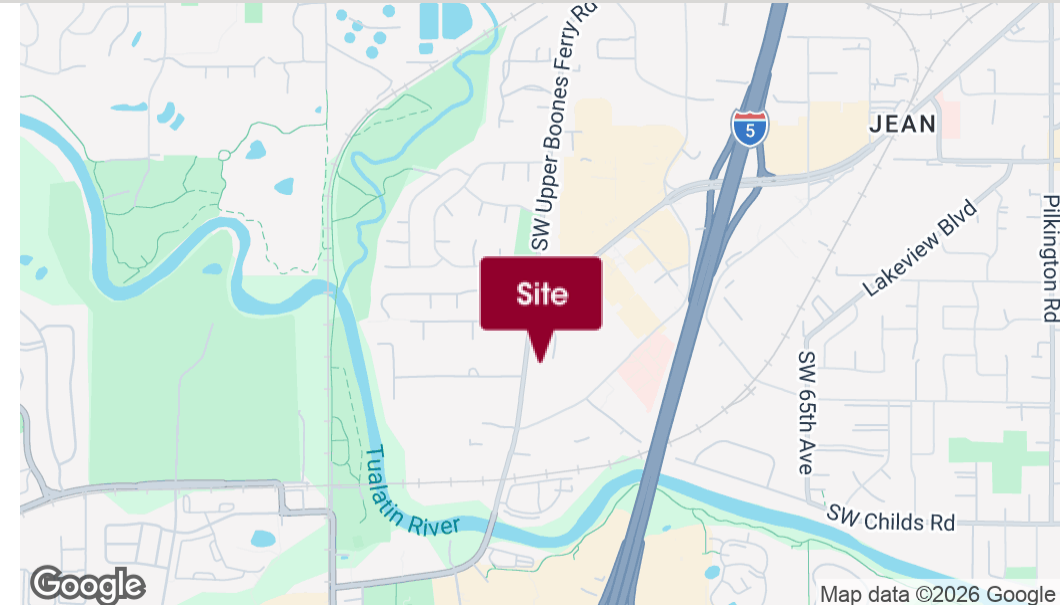


FOR LEASE

MACADAM FORBES
COMMERCIAL REAL ESTATE SERVICES

FOR LEASE

17858 SW Upper Boones Ferry Rd, Durham, OR 97224



PROPERTY DESCRIPTION

Boones Ferry Business Park, Building B is a stand-alone flex building with dock and grade-level loading adjacent to Bridgeport Village and two minutes to interstate 5 at the Lake Oswego exit.

PROPERTY HIGHLIGHTS

- Concrete tilt with brick masonry
- Dock High & Grade Level Doors: 1 of each
- Clear height : 16'
- Parking: 41 spaces

LOCATION DESCRIPTION

Immediate access to I-5 at the Lake Oswego exit. Located within walking distance from Bridgeport Mall, Whole Foods, REI and numerous restaurants.

OFFERING SUMMARY

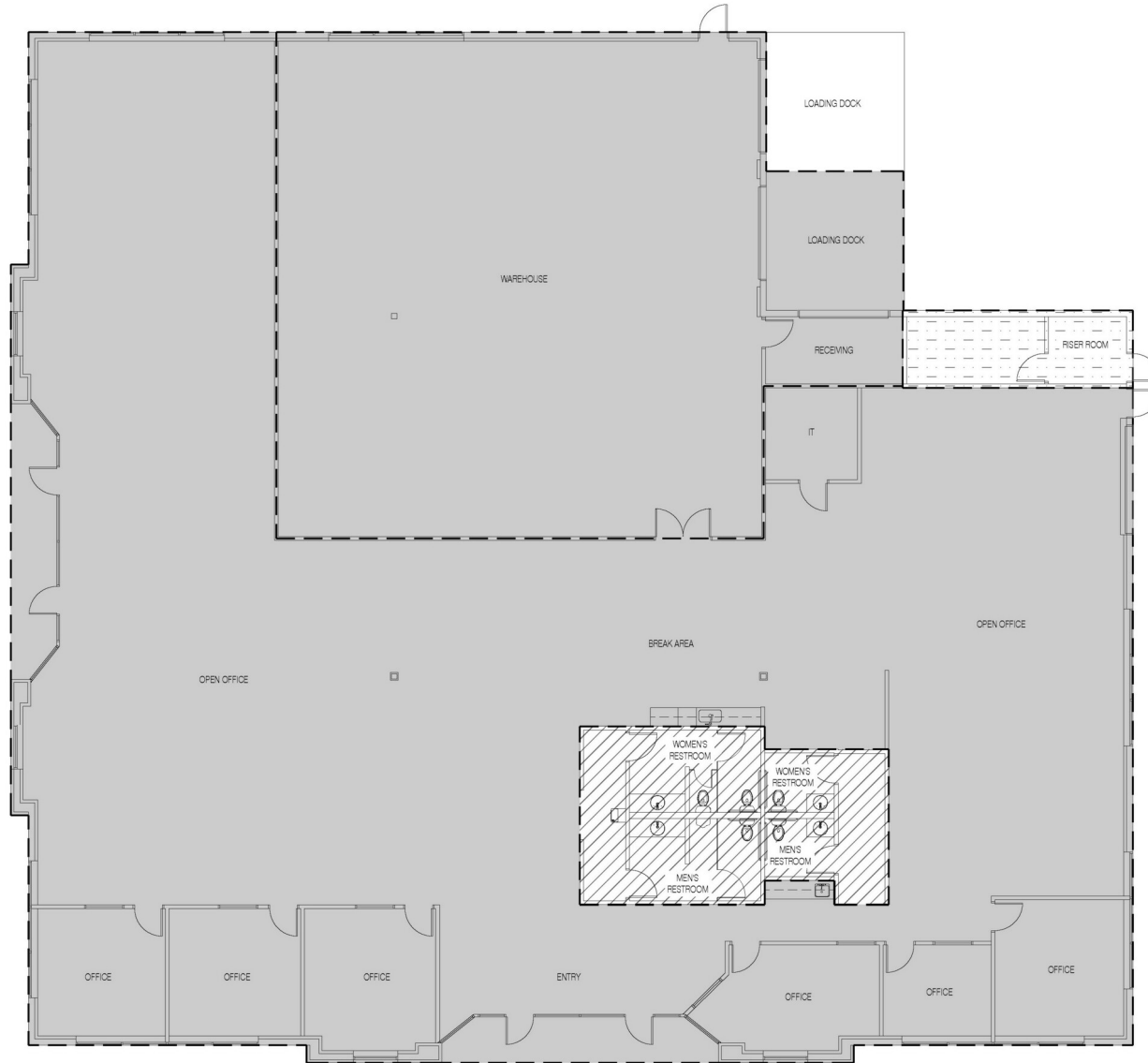
Lease Rate:	\$17.25 SF/yr (NNN)
NNN:	\$0.39/SF/month
Available SF:	12,492 SF
Office:	9,213 SF
Warehouse:	3,279 SF
Building Size:	12,492 SF



Stu Peterson, SIOR
503.972.7288
stu@macadamforbes.com
Licensed in OR & WA

FOR LEASE

17858 SW Upper Boones Ferry Rd, Durham, OR 97224



Stu Peterson, SIOR
503.972.7288
stu@macadamforbes.com
Licensed in OR & WA