

5935 WOODLAND AVE

PHILADELPHIA, PA 19143

FOOD MANUFACTURING FACILITY FOR SALE



REPRESENTED BY
THE FLYNN COMPANY

COLIN FLYNN , SIOR
CFLYNN@FLYNNCO.COM
215-561-6565 X 123

BEN CONWAY
BCONWAY@FLYNNCO.COM
215-561-6565 X 124

SCOTT DELPHEY
SCOTT.DELPHEY@FOODPROPERTIESGROUP.COM
626-590-0490

The
Flynn
Company



AVAILABLE FOR SALE

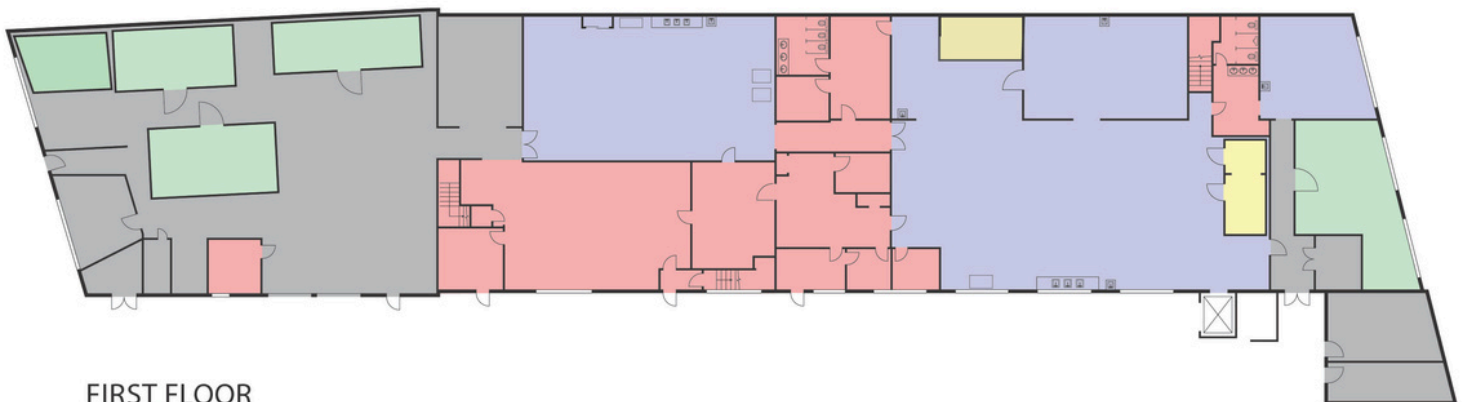
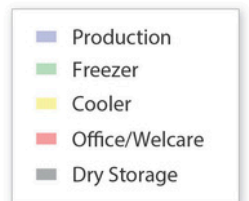
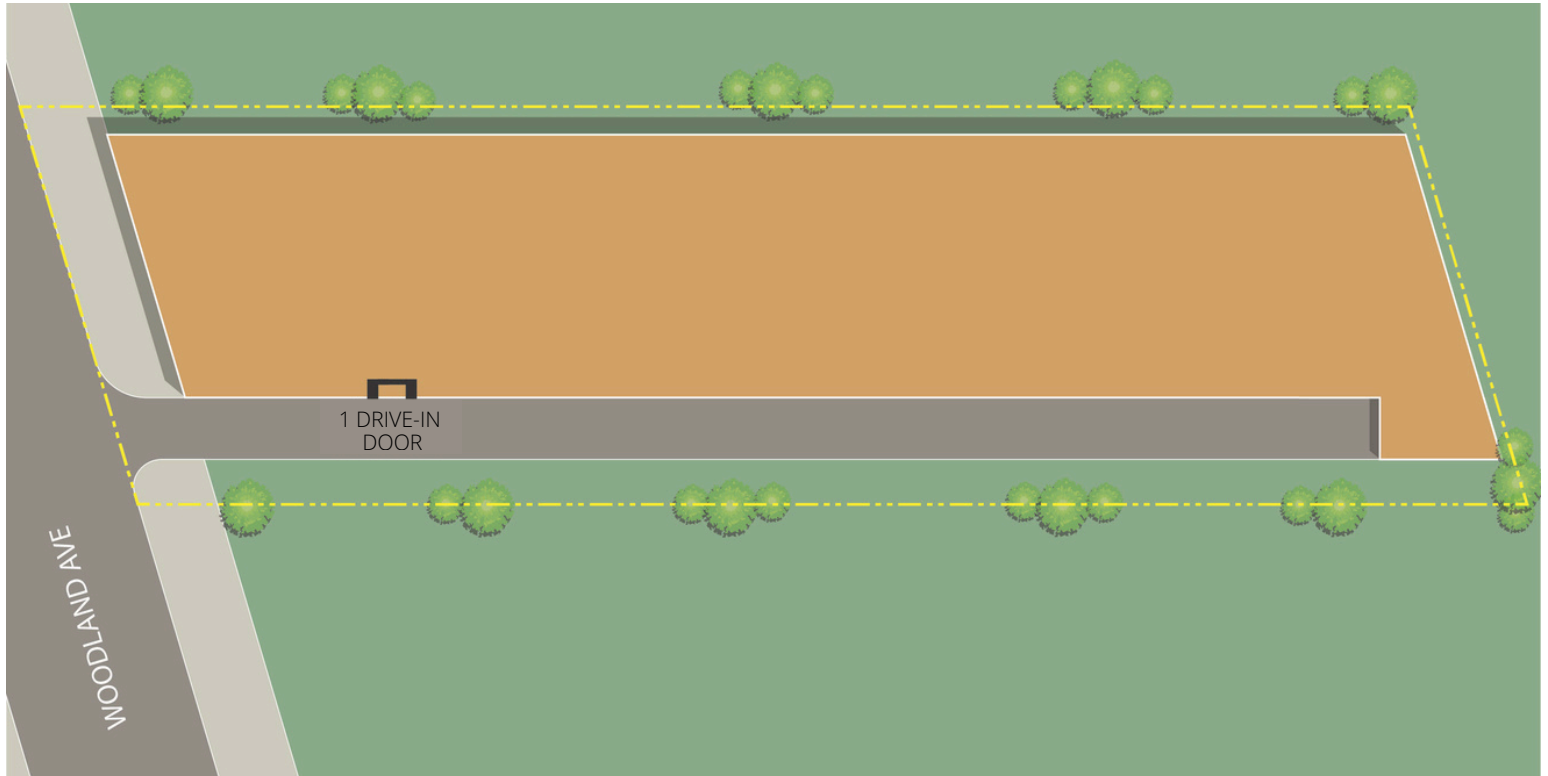
PROPERTY HIGHLIGHTS

- **TOTAL BUILDING SIZE:** 30,740 SF
 - **1st STORY:** 18,000 SF
 - **2nd STORY:** 12,000 SF
- **OFFICE SIZE:** 4,500 SF
- **LOT SIZE:** 23,552 SF
- **MANUFACTURING AREA:** Fully air conditioned with floor drains
- **COOLER:** 480 SF at 34-40 degrees
- **FREEZER:** 1,560 SF at 0-10 degrees
- **CEILING HEIGHT:** 9'-11' clear
- **ELECTRIC:** 1,200 Amps, 600v
- **LOADING:** 1 drive-in door (8'x20')
- **FIRE SUPPRESSION:** Wet system
- **ZONING:** ICMX, Industrial Commercial Mixed Use
- **ADDITIONAL:** Hood, air compressors, freight elevators

THE FLYNN COMPANY

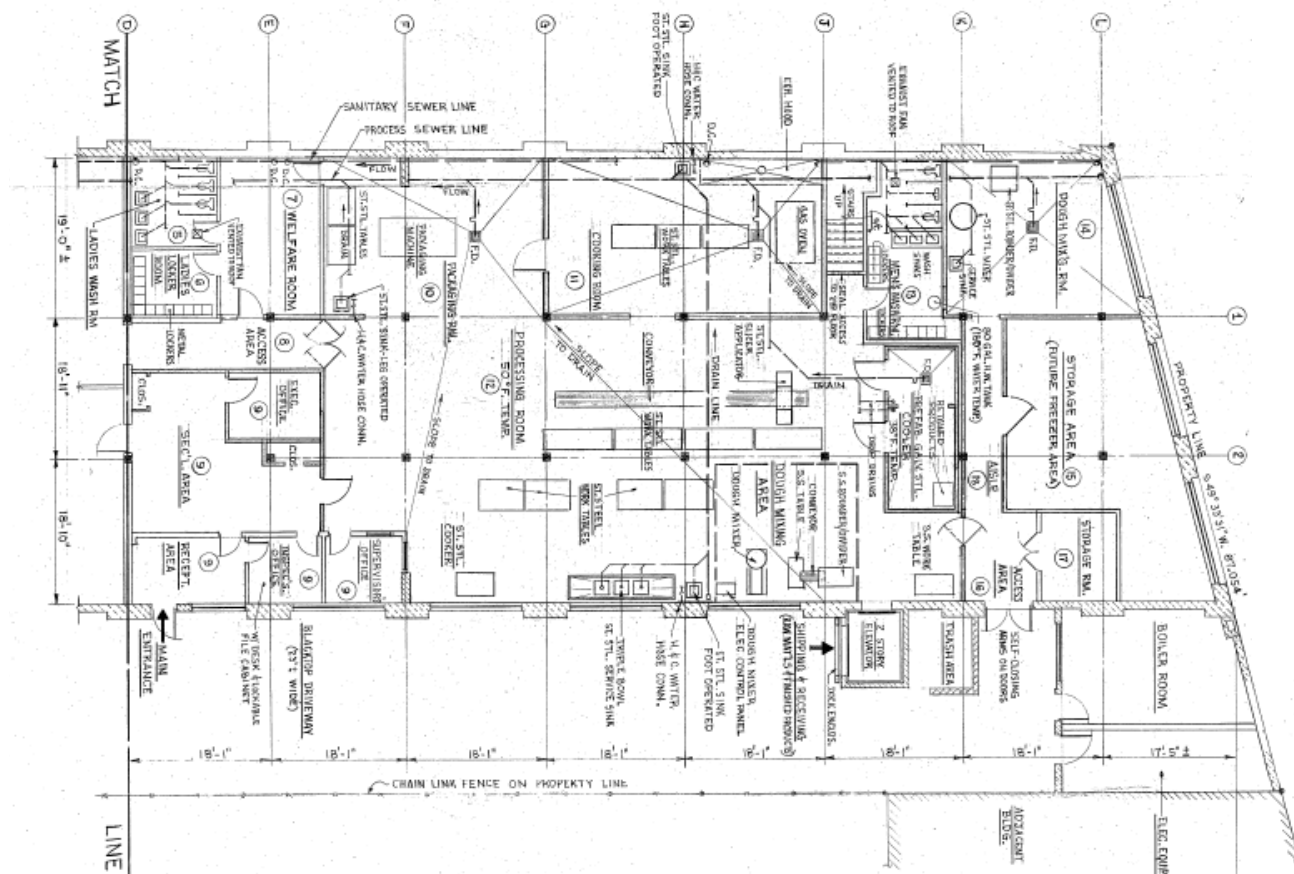
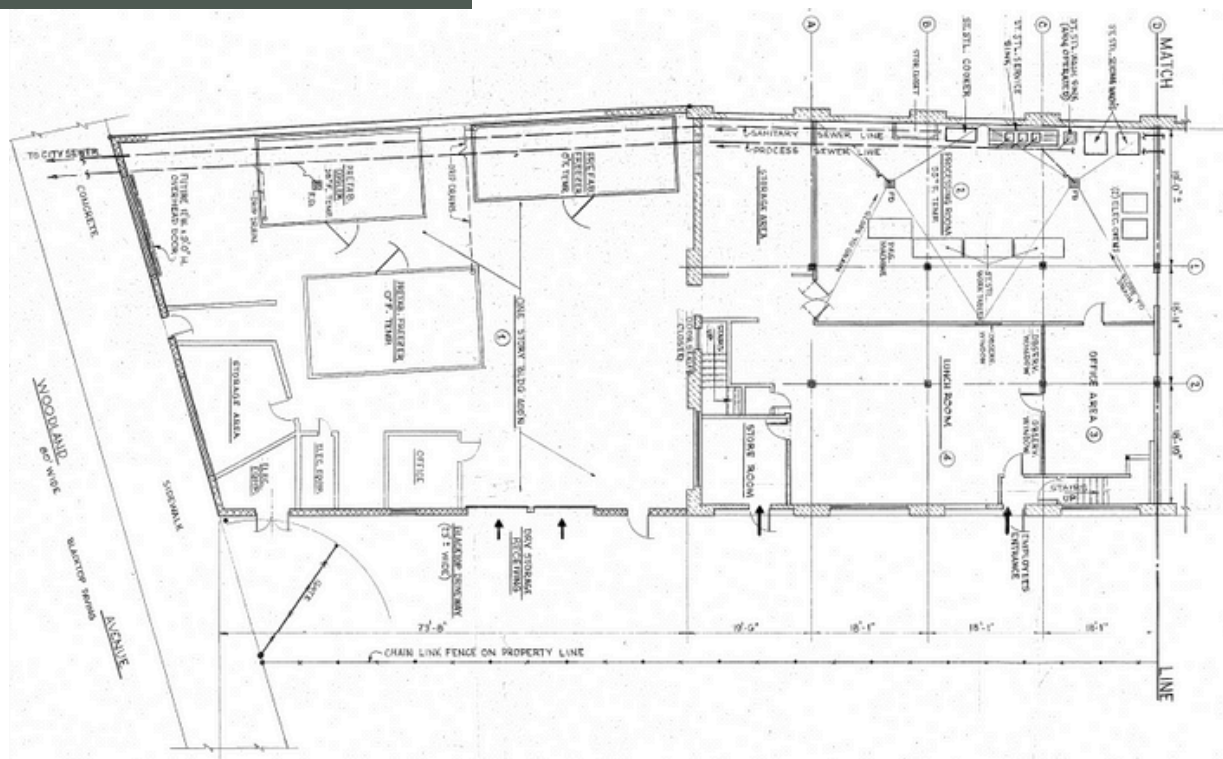
WWW.FLYNNCO.COM | 1621 WOOD STREET, PHILADELPHIA, PA 19103 | 215.561.6565

SITE / FLOOR PLANS

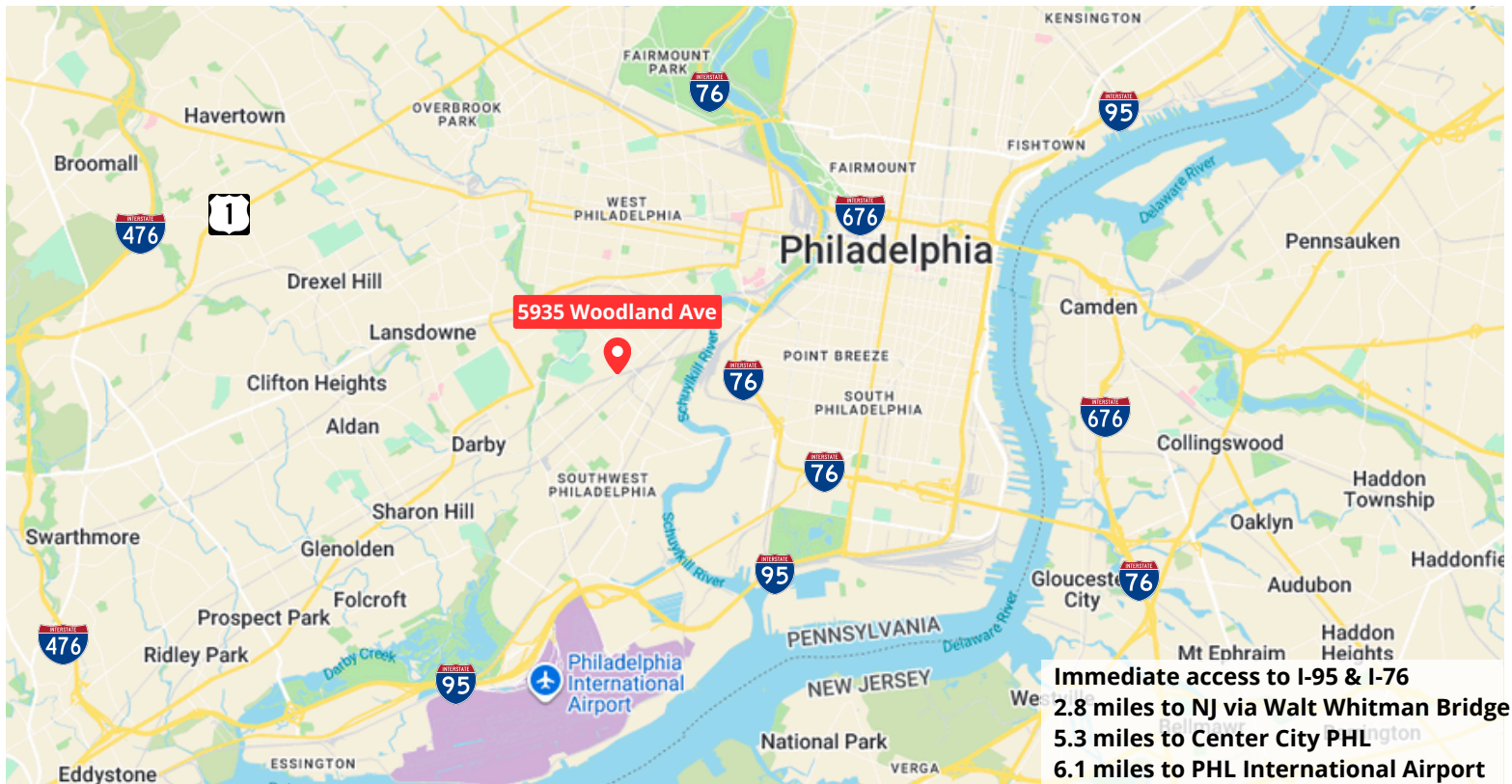


FIRST FLOOR

FLOOR PLANS



PHOTOS & LOCATION



**For More Information
Please Contact:**

COLIN FLYNN, SIOR
 CFLYNN@FLYNNCO.COM
 215-561-6565 X 123

BEN CONWAY
 BCONWAY@FLYNNCO.COM
 215-561-6565 X 124

SCOTT DELPHEY
 SCOTT.DELPHEY@FOODPROPERTIESGROUP.COM
 626-590-0490