

INDUSTRIAL WAREHOUSE FOR LEASE



2170–2180 VICTOR PLACE, SUITE 2176
COLORADO SPRINGS, CO 80915

3,780 SF SPACE
2.06 AC LAND AREA



COLE UNDERWOOD

Broker Associate

Direct: (719) 200-4610

cole@coleunderwood.com



4272 Promenade Drive Suite 100

Colorado Springs, CO 80920

www.coleunderwood.com

PROPERTY HIGHLIGHTS

Monthly Rent:	\$2,500 Plus Utilities
Space Size:	3,780 SF
Land Size:	2.06 AC
Zoning:	C5
Overhead Doors:	3
Year Built:	1996

PROPERTY DESCRIPTION

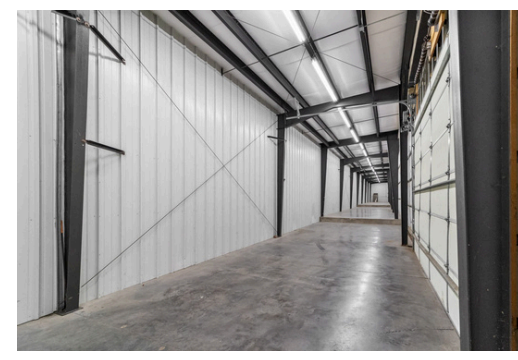
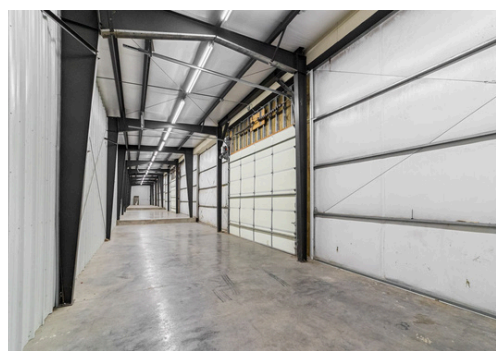
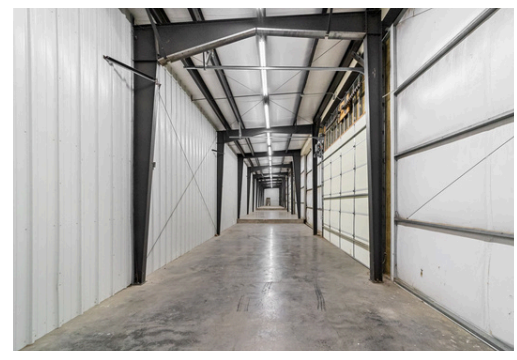
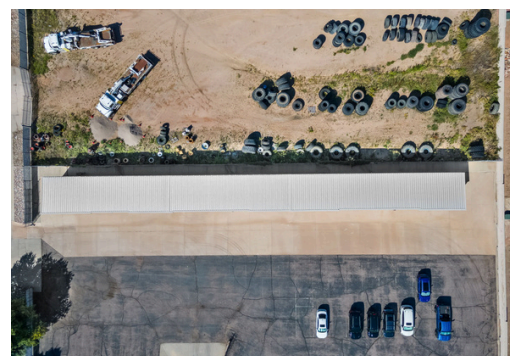
3,780 Square foot building with 3 overhead doors. Building only has electric and is 18' deep. Sits within a fully fenced property with easy access to Powers Blvd. Please call Listing agent for more details

PROPERTY HIGHLIGHTS

- Fully Fenced Property
- Zoned C5
- 3 Overhead Doors
- 18' Deep
- Right off Powers, South of Constitution



PROPERTY PHOTOS



PROPERTY MAP

