

FOR LEASE

CENTERPOINTE AT LAGUNA

*Move-In Ready &
Customizable Office,
Medical & Commercial
in Elk Grove.*

2236 LONGPORT CT
ELK GROVE, CA 95758

KIDDER.COM

 Kidder
Mathews

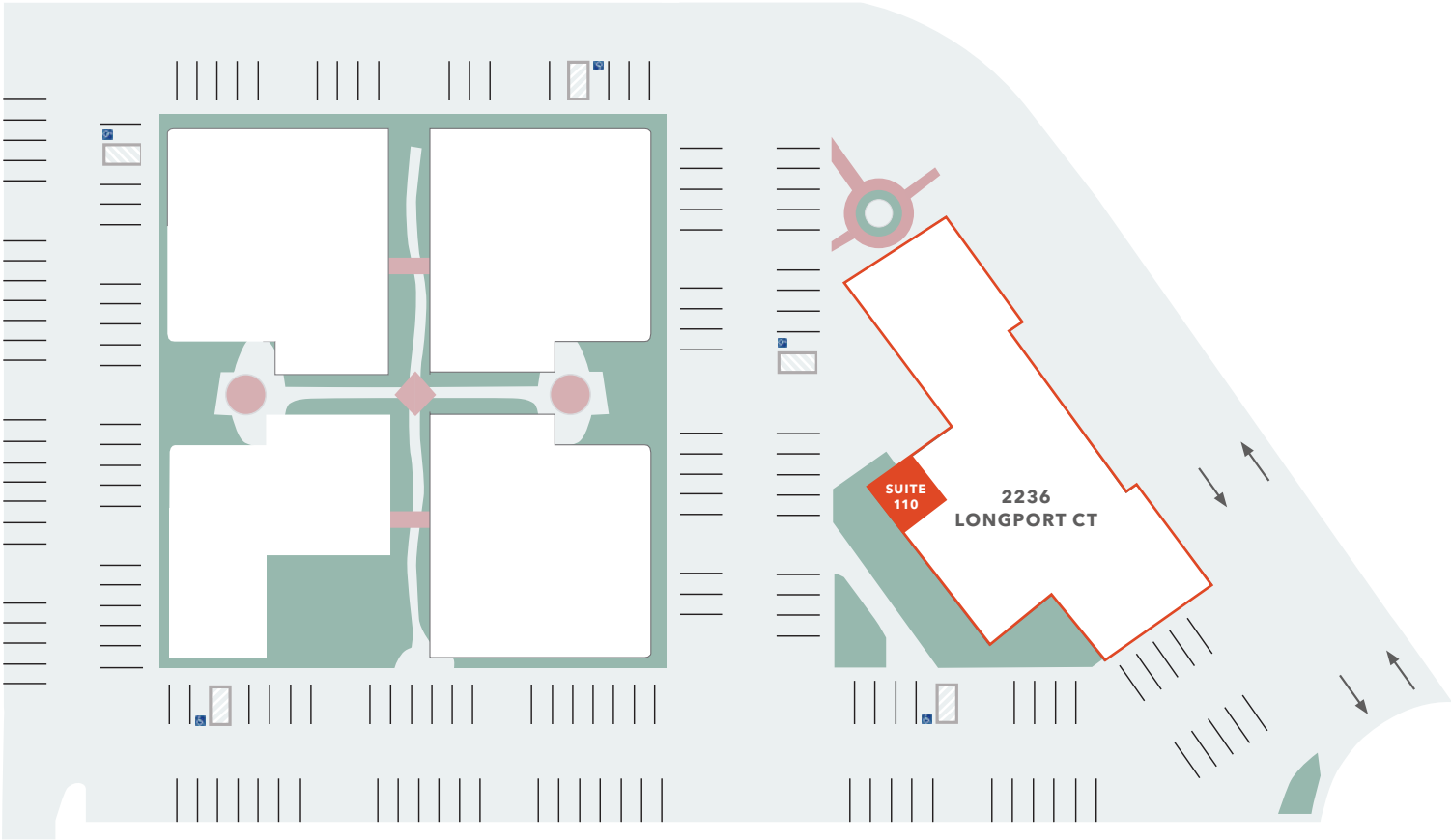
CENTERPOINTE AT LAGUNA

FOR LEASE

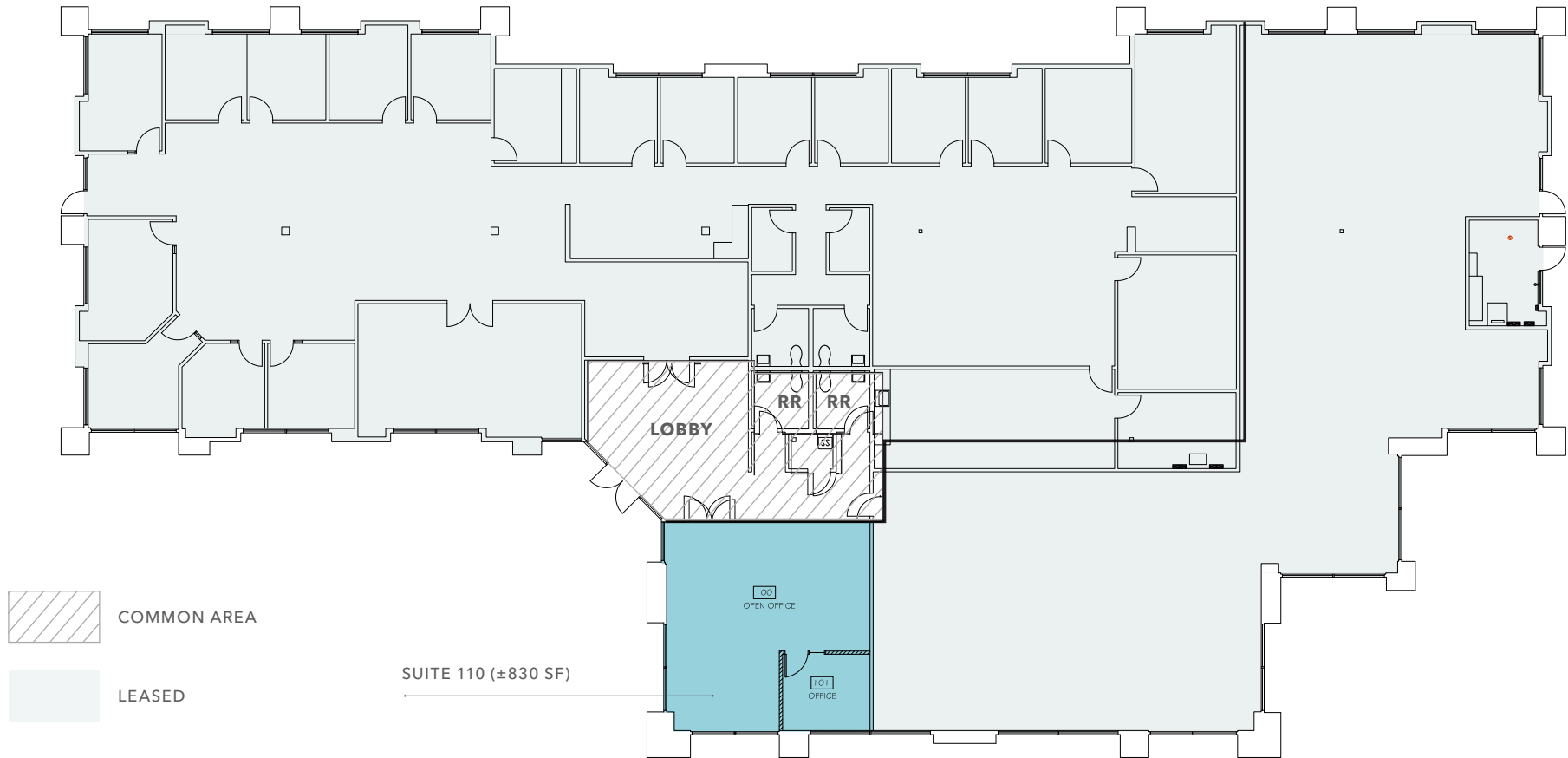
Address	Suite	SF	Availability	Lease Rate
2236 LONGPORT CT	Suite 110	±830	July 2026	\$2.75/ SF, Full-Service less Janitorial



SITE PLAN



FLOOR PLAN - 2236 LONGPORT CT



CENTERPOINTE AT LAGUNA





UNDER NEW OWNERSHIP
& PROPERTY MANAGEMENT



FREEWAY FRONTAGE LAND
ALSO AVAILABLE (±6.3 AC)

CENTERPOINTE
AT LAGUNA

AVAILABLE FOR LEASE

Benefits & Features

AFFORDABLY PRICED

Price below market. This is the best deal in Elk Grove for quality, Office, Medical, and Commercial buildings for lease.

RARE OPPORTUNITY

Rare opportunity to Lease small condominiums or stand-alone buildings in Elk Grove.

FLEXIBLE USES

Zoned General Commercial (GC) CenterPointe at Laguna allows for uses such as Office, Medical, Dental, Retail, Fitness, Education, Assembly, and many other uses.

SPACE OPTIONS & BUILDOUTS

Variety of unit sizes with customizable buildouts to fit specific tenant needs.

VERY ACCESSIBLE

Located immediately off of Interstate-5 & Laguna Blvd only 15 minutes from Downtown Sacramento.

IMMACULATE CONDITION

Immaculately maintained property with beautiful landscaping and water fountains

IMMEDIATE MOVE IN

Improved spaces can be leased and you can move-in immediately upon lease execution.

SIGNAGE

Signage available on Buildings and Monuments. Freeway visible signage opportunity.

NEARBY AMENITIES



Apple Campus

Apple established its Elk Grove campus in 1992 as a distribution and manufacturing hub supporting the company's growing personal computer business. During the late 1990s, the site became known for assembling early iMac computers and handling logistics operations for Apple products. As Apple shifted away from domestic manufacturing in the 2000s, the campus evolved into a large-scale operational center focused on AppleCare support, logistics, repair services, and refurbishment activities.

Today, the Elk Grove campus is one of Apple's largest facilities outside of Cupertino. The campus encompasses roughly 780,000 to 800,000 square feet across multiple buildings on approximately 78 acres near Interstate 5. Employment has steadily increased over the past decade, growing from roughly 1,200 employees in 2009 to more than 5,000 workers today, including support staff, logistics personnel, technical operations employees, and AppleCare representatives.

Looking ahead, Apple is expected to maintain Elk Grove as a strategic back-office and operations hub rather than a major engineering campus. The facility remains critical to Apple's supply chain, customer support, refurbishment, and distribution infrastructure, while continued modernization efforts suggest the company intends to preserve and expand its long-term presence in the Sacramento region.

TENTATIVE MONUMENT SIGNAGE RENDERING



CENTERPOINTE AT LAGUNA

Technology Integrators

SAP Fitness

Lampert & Scanfold, LLP

Sutter Medical Group

2228-2236 LONGPORT COURT

ABOUT ELK GROVE

ELK GROVE OVERVIEW

Elk Grove is the second largest city in Sacramento County, located approximately 15 minutes southeast of Downtown Sacramento. One of Sacramento's most affluent submarkets, demand for Elk Grove commercial real estate is robust because of a fast-growing population (over 1.0% average annual population growth 10 years) and the abundant spending power in the market. The city is part of the Sacramento/Roseville/Arden-Arcade MSA with a total population of approximately 2.35 million people. According to Elk Grove's city website, Elk Grove has the second highest median income levels out of the entire county at \$84,827 - confirming the city's affluence and spending power. Major employers in the Elk Grove submarket include Apple, the Elk Grove Auto Mall, State of California, Dignity Health, Kaiser Permanente, and many others. The area is also home to one of greater Sacramento's largest shopping centers called Delta Shores. Elk Grove is located 90 minutes from the San Francisco bay area, Lake Tahoe, and Nevada.

INFRASTRUCTURE

Elk Grove's location provides easy access to two major freeways, the Sacramento International Airport (SMF), rail lines, and two ports. The Sacramento International Airport is located approximately 26 miles north of Elk Grove along Interstate-5 and provides all the major carrier airlines.

In 2019, SMF airport serviced over 13 million passengers which was a 9.3% increase over 2018. Elk Grove is also positioned with direct access to Interstate-5 and Highway 99. Both freeways provide direct access to downtown Sacramento to the north as well as many other major freeways that connect to other major cities in the area including San Francisco and San Jose.

EDUCATION

Serving the City of Elk Grove and surrounding communities since 1959, the Elk Grove Unified School District (EGUSD) is a top performing school district recognized throughout California and the nation as a leader in progressive education. EGUSD mirrors the diversity of California, with more than 80 languages and dialects spoken throughout the district. As the diversity of EGUSD has grown, so has its student population. The district is currently the largest school district in Northern California and the fifth largest in the state - with nearly 62,000 students. EGUSD offers a variety of educational programs, including preschool, kindergarten through twelfth grade, adult education and special education. EGUSD has been honored numerous times at the local, state and national levels, proving that EGUSD is truly a district of excellence by design.



CENTERPOINTE AT LAGUNA

Exclusively leased by

KEVIN SHEEHAN
916.549.9691
kevin.sheehan@kidder.com
LIC N° 00936093

TYLER BOYD
916.945.7508
tyler.boyd@kidder.com
LIC N° 01927167

KIDDER.COM

This information supplied herein is from sources we deem reliable. It is provided without any representation, warranty, or guarantee, expressed or implied as to its accuracy. Prospective Buyer or Tenant should conduct an independent investigation and verification of all matters deemed to be material, including, but not limited to, statements of income and expenses. Consult your attorney, accountant, or other professional advisor. All Kidder Mathews designs are the sole property of Kidder Mathews. Branded materials and layouts are not authorized for use by any other firm or person.

