

Office/Flex | For Sublease

CBRE

2216 Magnolia Street

20,720 SF Available Now

2216 Magnolia Street
Richmond, Virginia 23223

Plug & Play Office/Flex/Data Center Opportunity



www.cbre.com/richmond

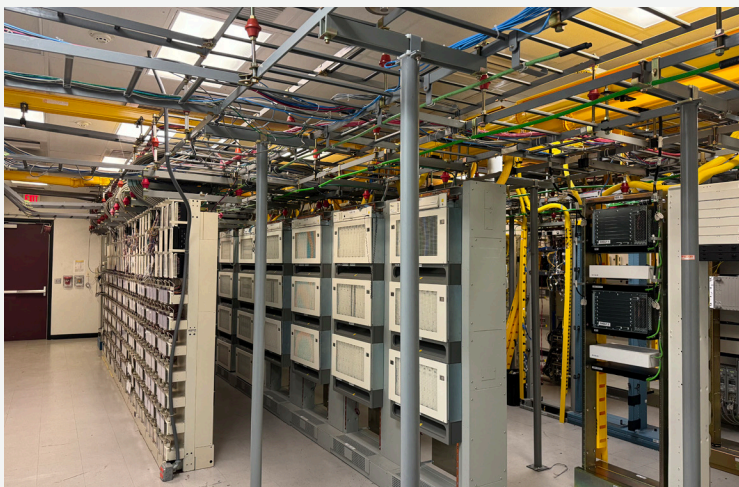
2216 Magnolia Street

2216 Magnolia Street | Richmond, Virginia 23223



Property Highlights

- + 20,720 SF of office/flex space for sublease
- + Building can accommodate a variety of uses, including office/warehouse, office or data center
- + 3 dock-high doors and 1 ground level door
- + Sublease term through March 14, 2028
- + Fenced storage lot
- + Heavy power: 400 amp
- + 17' clear
- + Excellent Interstate Access: 0.3 miles from I-64 interchange and 2 miles from I-95
- + Existing data center infrastructure available
- + Numerous amenities within short drive
- + Contact agent for more information





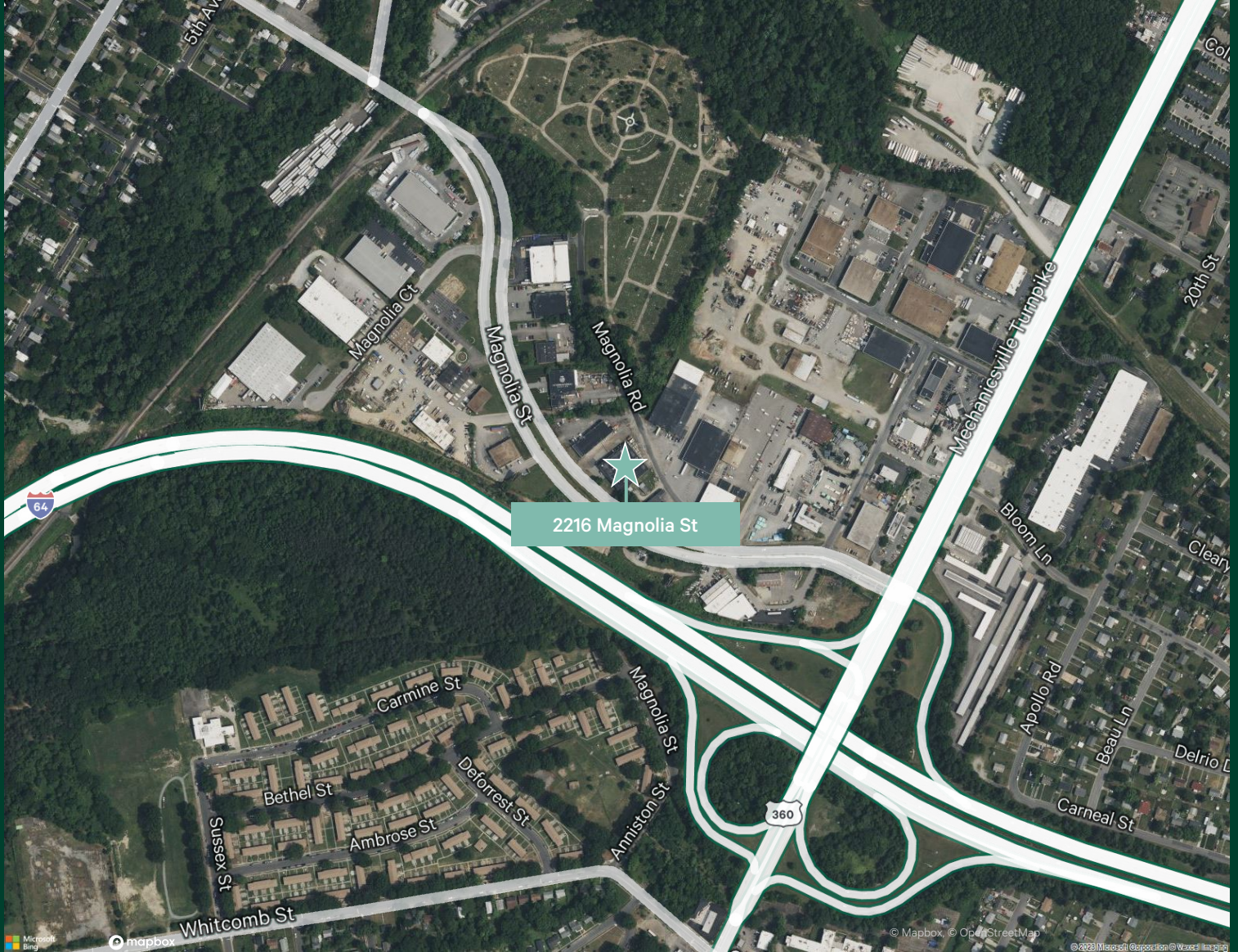
Floor Plan



2216 Magnolia Street

2216 Magnolia Street | Richmond, Virginia 23223

For Sublease



Contact Us

Chris Wallace
Senior Vice President
+1 804 401 4005
chris.wallace@cbre.com

Doug Tice, IV
Associate
+1 804 201 2036
doug.tice@cbre.com

© 2023 CBRE, Inc. All rights reserved. This information has been obtained from sources believed reliable, but has not been verified for accuracy or completeness. You should conduct a careful, independent investigation of the property and verify all information. Any reliance on this information is solely at your own risk. CBRE and the CBRE logo are service marks of CBRE, Inc. All other marks displayed on this document are the property of their respective owners, and the use of such logos does not imply any affiliation with or endorsement of CBRE. Photos herein are the property of their respective owners. Use of these images without the express written consent of the owner is prohibited.