

For Sale

\$255,000



**2460 NE Division Street
Gresham, OR 97030**

**Plaza 2400
Commercial Condo**

Move in Ready Commercial Condominium!
This is a wonderful opportunity to own your
own office space!

- 994 Square Feet, Large Reception area
- 3 Private Offices
- Kitchenette & Restroom
- 66 Parking spaces available
- Located across from Gresham Golf Course
- HOA dues are \$1,043 per quarter
- Property Taxes \$2755.99
- RMLS #24363286



Corinne O'Halloran, Broker

(503) 819-2337

Corinne@KMORealEstate.com

Sue O'Halloran, Broker

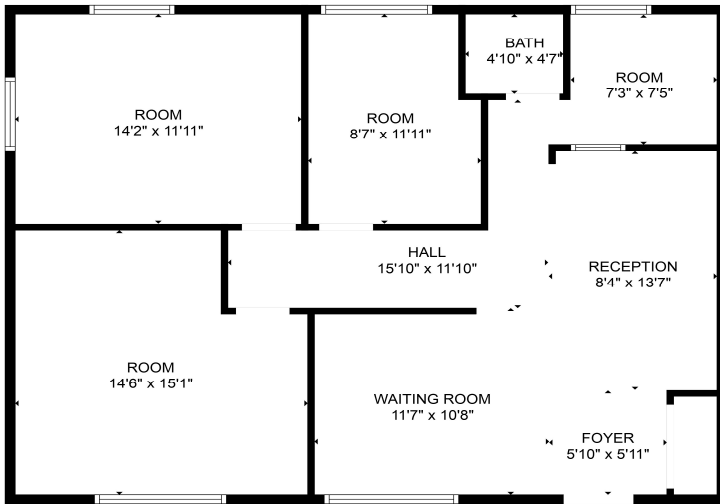
(503) 661-8000

Sue@KMORealEstate.com

333 N. Main Ave. Suite 109

Gresham, OR 97030

Plaza 2400 Commercial Condo



FLOOR PLAN CREATED BY CUBICASA APP. MEASUREMENTS DEEMED HIGHLY RELIABLE BUT NOT GUARANTEED.



KMO
REAL ESTATE
KOHLER MEYERS O'HALLORAN, INC.

Corinne O'Halloran, Broker
(503) 819-2337
Corinne@KMORealEstate.com

Sue O'Halloran, Broker
(503) 661-8000
Sue@KMORealEstate.com

333 N. Main Ave. Suite 109
Gresham, OR 97030