

FOR LEASE | 2ND FLOOR OFFICE

450 WEST FORT STREET



450 WEST FORT STREET DETROIT, MI 48226

PROPERTY HIGHLIGHTS:

- 4,957 SF of Move-In Ready, Upscale, and Modern Office Space
- Central downtown location - Nearby to area restaurants and amenities
- Convenient parking / low cost
- Near Huntington Place, Campus Martius, and Capitol Park

AVAILABLE SPACES

SPACE	LEASE RATE	SIZE (SF)
Suite 200	\$24.00 SF/yr	4,957 SF

The information provided herein along with any attachment(s) was obtained from sources believed to be reliable, however, Friedman Real Estate makes no guarantees, warranties, or representations as to the completeness or accuracy of such information and legal counsel is advised. All information provided is subject to verification and no liability for reliance on such information or errors or omissions is assumed. The presentation of this property is submitted subject to errors, omissions, change of price or conditions, prior sale or lease, or withdrawal without notice. Copyright © 2024 Friedman Real Estate. All rights reserved.

FOR MORE INFORMATION PLEASE CONTACT:



STEVE EISENSHTADT
Senior Vice President, Brokerage Services
steve.eisenshtadt@freg.com



ANDREW BOWER
Senior Associate, Advisory & Brokerage Services
andrew.bower@freg.com



JORDAN FRIEDMAN
Associate, Brokerage Services
jordan.friedman@freg.com

248.324.2000

eCODE 118



450 WEST FORT STREET | OFFICE
PROPERTY PHOTOS



FOR MORE INFORMATION **PLEASE CONTACT:**



STEVE EISENSHTADT
steve.eisenshtadt@freg.com



ANDREW BOWER
andrew.bower@freg.com



JORDAN FRIEDMAN
jordan.friedman@freg.com

450 WEST FORT STREET | OFFICE
PROPERTY PHOTOS



FOR MORE INFORMATION **PLEASE CONTACT:**



STEVE EISENSHTADT
steve.eisenshtadt@freg.com

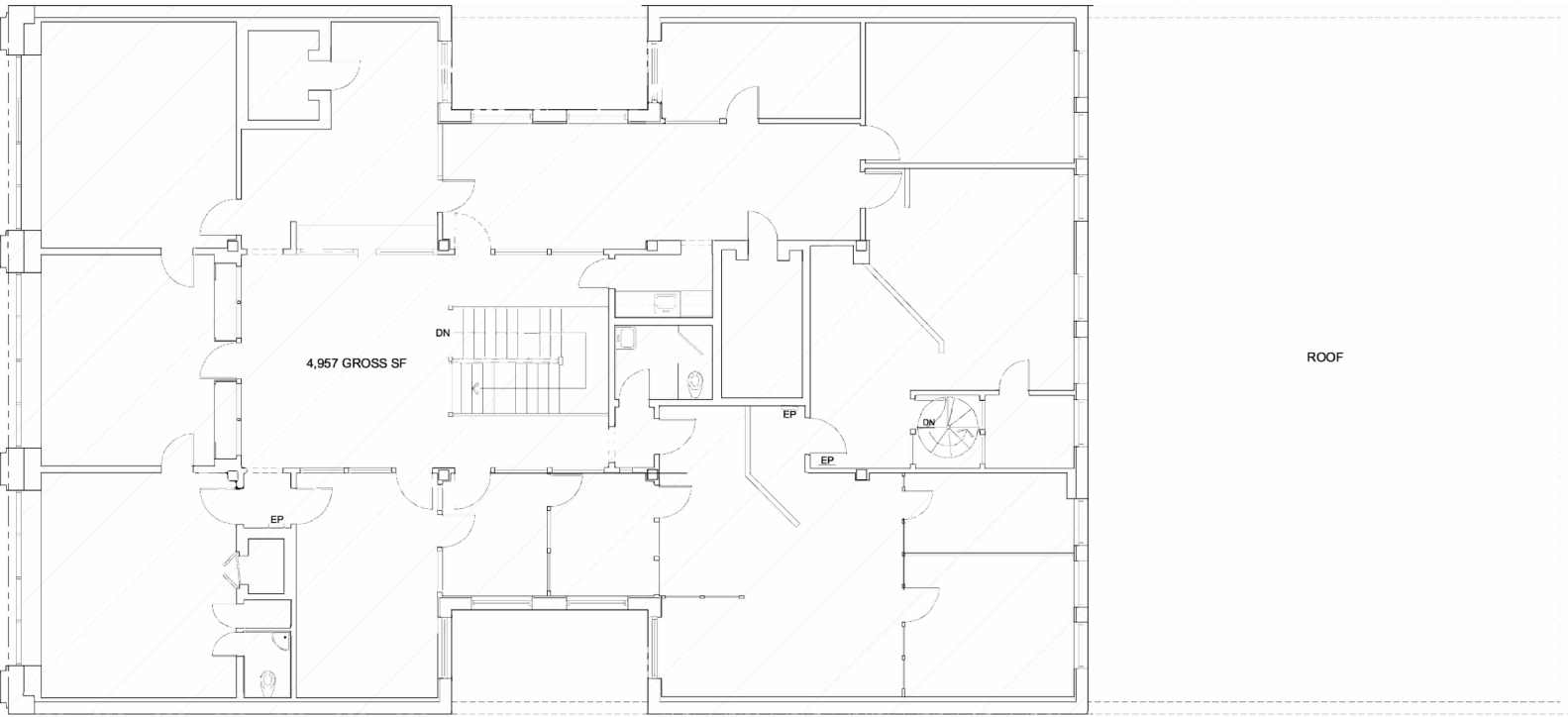


ANDREW BOWER
andrew.bower@freg.com



JORDAN FRIEDMAN
jordan.friedman@freg.com

450 WEST FORT STREET | OFFICE FLOOR PLAN WITH SQUARE FOOTAGE



SECOND FLOOR PLAN
450 W. FORT STREET, DETROIT, MI
Date: 1-15-19 Scale: 1/4" = 1'-0"

FOR MORE INFORMATION **PLEASE CONTACT:**



STEVE EISENSHTADT
steve.eisenshtadt@freg.com



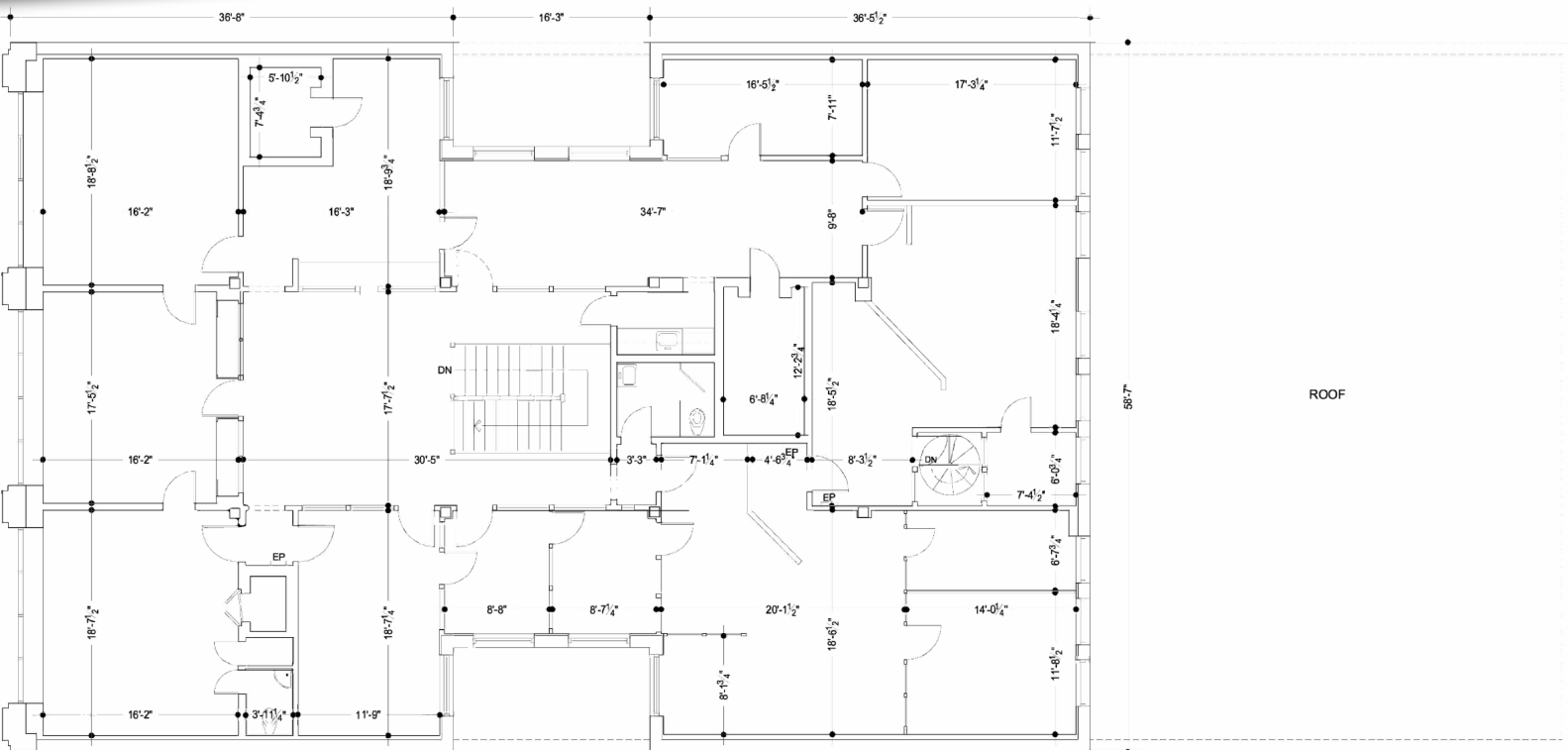
ANDREW BOWER
andrew.bower@freg.com



JORDAN FRIEDMAN
jordan.friedman@freg.com

450 WEST FORT STREET | OFFICE

FLOOR PLAN WITH DIMENSIONS



SECOND FLOOR PLAN
450 W. FORT STREET, DETROIT, MI
Date: 1-15-19 Scale: 1/4" = 1'-0"

FOR MORE INFORMATION PLEASE CONTACT:



STEVE EISENSHTADT
steve.eisenshtadt@freg.com



ANDREW BOWER
andrew.bower@freg.com



JORDAN FRIEDMAN
jordan.friedman@freg.com