

# FOR LEASE

900 Meridian Avenue E  
Milton, WA 98354



COMING SOON!



## SURPRISE LAKE SQUARE

Justin Holmes | Josh Parnell | Justice Knox

First Western Properties—Tacoma Inc. | 253.472.0404  
6402 Tacoma Mall Blvd, Tacoma, WA 98409 | fwp-inc.com

**SURPRISE LAKE SQUARE** is a strong, grocery anchored shopping center situated between I-5 and State Route 167. It is a bustling neighborhood shopping center with national anchors such as Safeway and Anytime Fitness. It offers high visibility on the best corner in Milton, along with close proximity to Federal Way, Puyallup, Fife, Kent and Auburn.

**900 MERIDIAN AVENUE E** AVAILABLE

- ▶ SUITE 6: 1,200 SF \$32.00 PSF+ NNN
- ▶ SUITE 816: 5,860 SF | GROUND LEASE | CALL FOR DETAILS

- Ample parking at 5/1,000.
- **Established neighborhood:** Located in a well-established area of Milton with existing residential and commercial development.
- **Accessibility:** Easy access to major roadways like State Route 167, providing convenient connections to surrounding areas.
- **Surrounding amenities:** Depending on the specific unit or business type, potential proximity to various amenities like The Mill Steakhouse, grocery stores, and other businesses in the Surprise Lake Square shopping center.



Population



Average HH Income

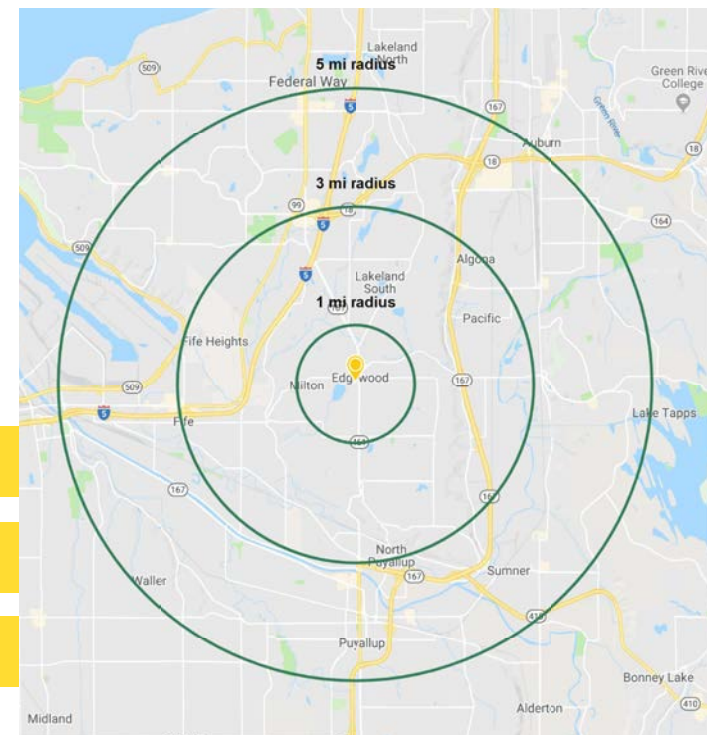


Daytime Population

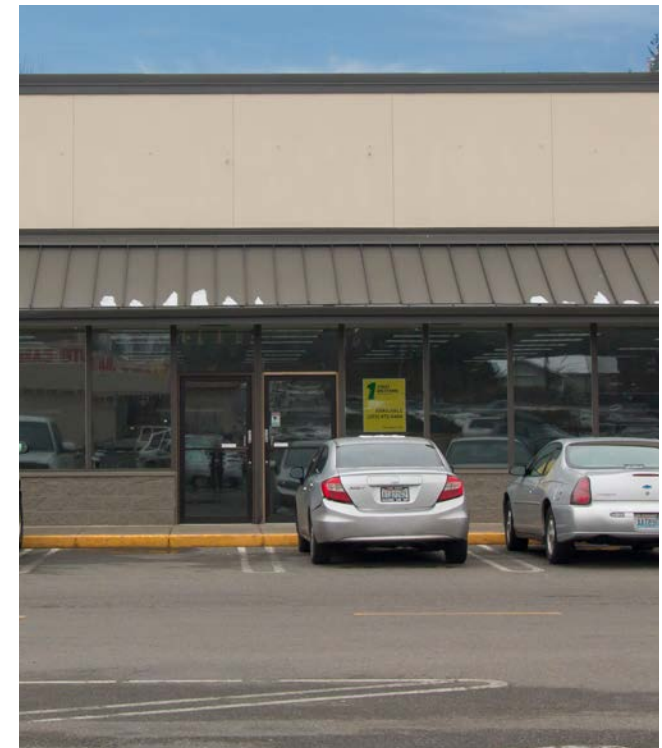
Regis - 2024

	Population	Average HH Income	Daytime Population
Mile 1	11,188	\$112,320	4,687
Mile 3	55,615	\$127,691	35,547
Mile 5	189,677	\$126,482	128,324

TENANTS



SUMMARY



LOCATION DETAILS



30,845 CPD  
Meridian Ave E



13,994 CPD  
Milton Way



Located in a  
bustling neighborhood  
shopping center



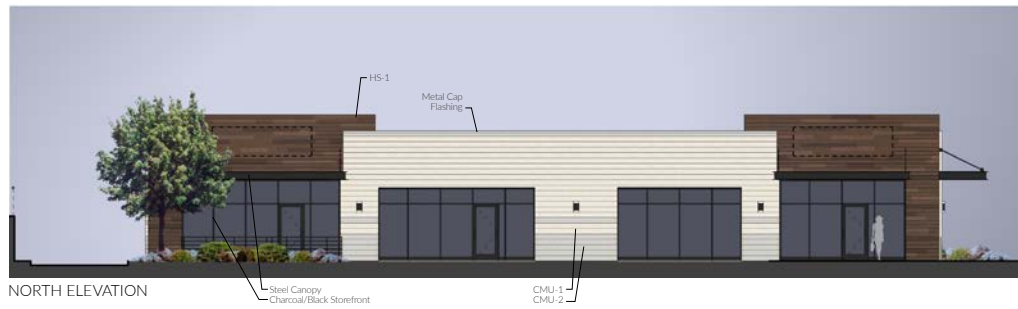
Located between  
I-5 and SR 167



# SITE PLAN

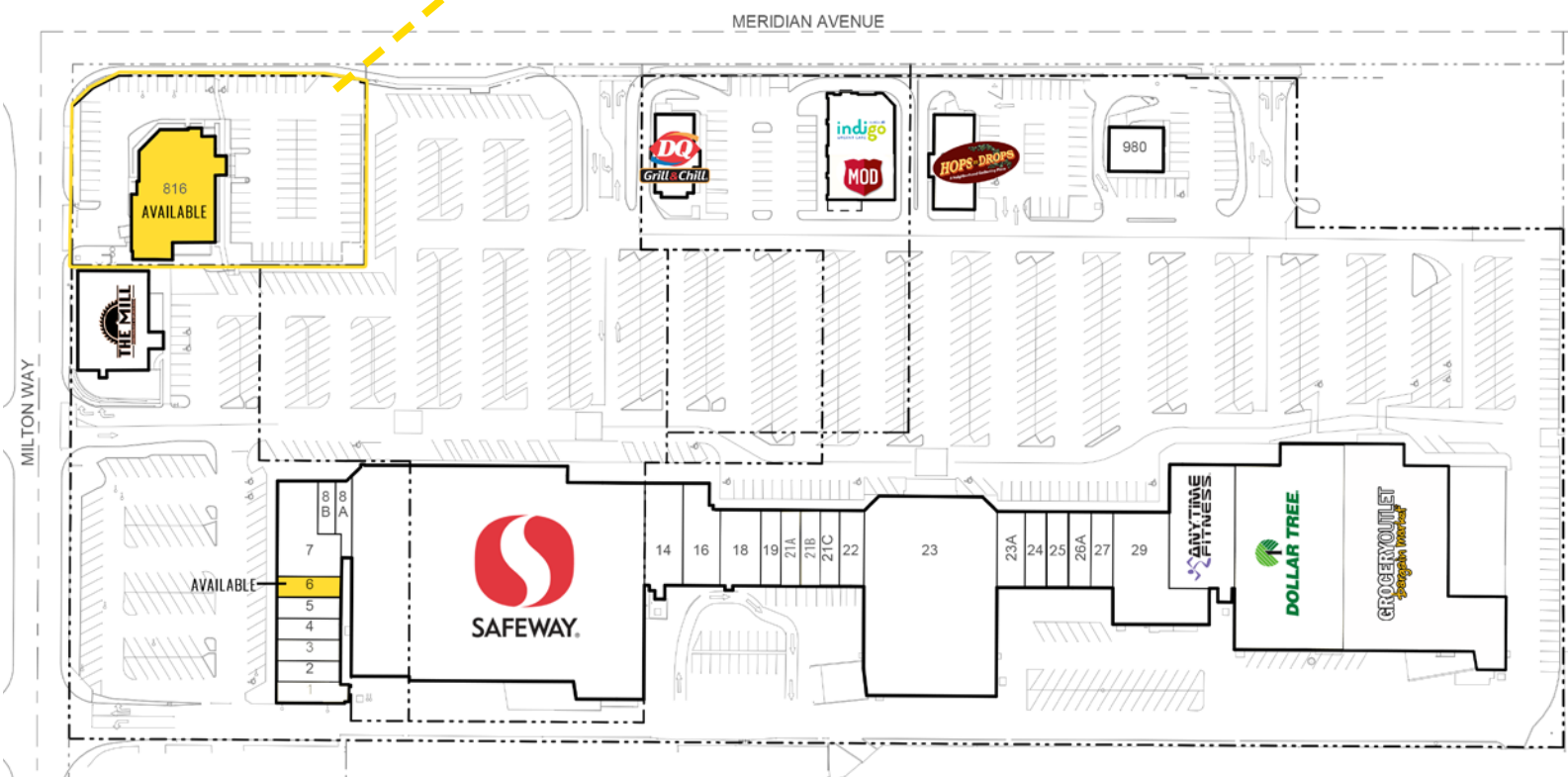


EAST ELEVATION



NORTH ELEVATION

## FUTURE DEVELOPMENT RENDERINGS



Suite	SF	Rate	Details
6	1,200	\$32.00, NNN	AVAILABLE
816	5,860	CALL FOR DETAILS	AVAILABLE





TACOMA | KIRKLAND | PORTLAND | SEATTLE



RELATIONSHIP FOCUSED. RESULTS DRIVEN.

**JUSTIN HOLMES**

 253.447.2282


 [justin@firstwesternproperties.com](mailto:justin@firstwesternproperties.com)

**JOSH PARNELL**

 253.284.3630

 [josh@firstwesternproperties.com](mailto:josh@firstwesternproperties.com)

**JUSTICE KNOX**

 253.471.5501

 [jknox@firstwesternproperties.com](mailto:jknox@firstwesternproperties.com)



First Western Properties—Tacoma Inc. | 253.472.0404  
6402 Tacoma Mall Blvd, Tacoma, WA 98409 | fwp-inc.com

© First Western Properties, Inc. DISCLAIMER: The above information has been secured from sources believed to be reliable, however, no representations are made to its accuracy. Prospective tenants or buyers should consult their professional advisors and conduct their own independent investigation. Properties are subject to change in price and/or availability without notice.