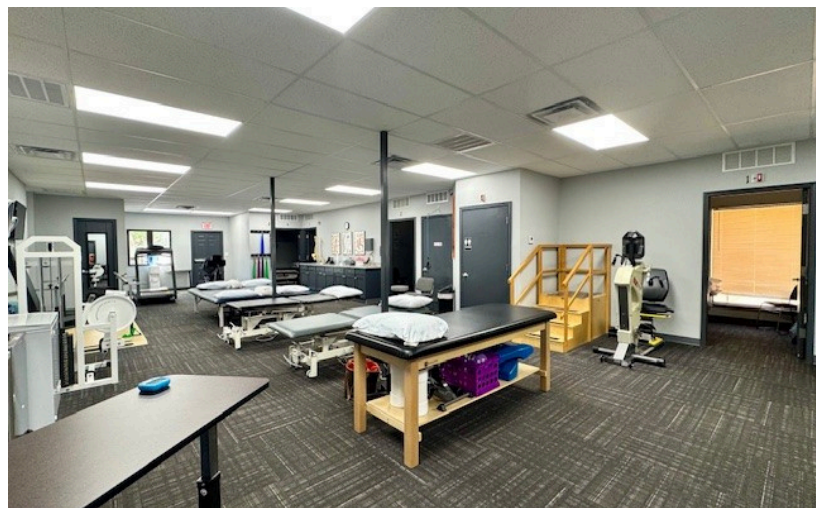


501 E 15<sup>TH</sup> STREET, BUILDING 1, EDMOND, OK 73013



\$19.00SF



Recently updated 3,080sf office medical suite in the heart of Edmond off of 15<sup>th</sup> and Rankin with frontage along 15<sup>th</sup> Street. Suite offers a lobby area, reception area, manager's office, 4 private clinic rooms, breakroom with laundry hookups, 3 private restrooms and large open area once used for therapy sessions. Terms are negotiable and possible TIA available depending on terms.

SKYBRIDGE REAL ESTATE

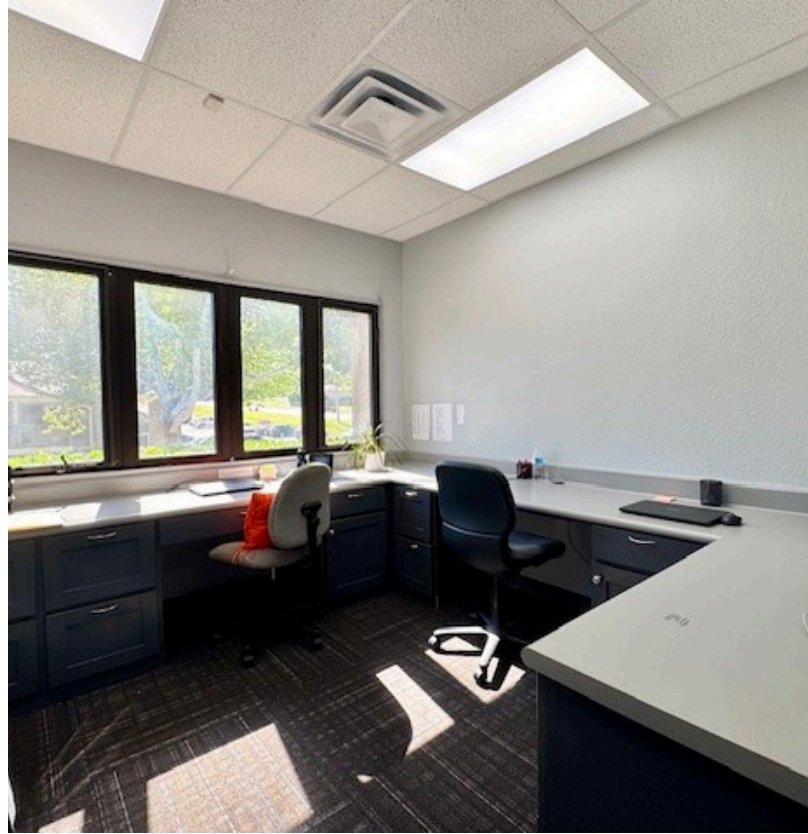
HEATHER RAINER | 405.922.0809

HEATHER.RAINER@SKYBRIDGELLC.COM

WWW.SKYBRIDGELLC.COM







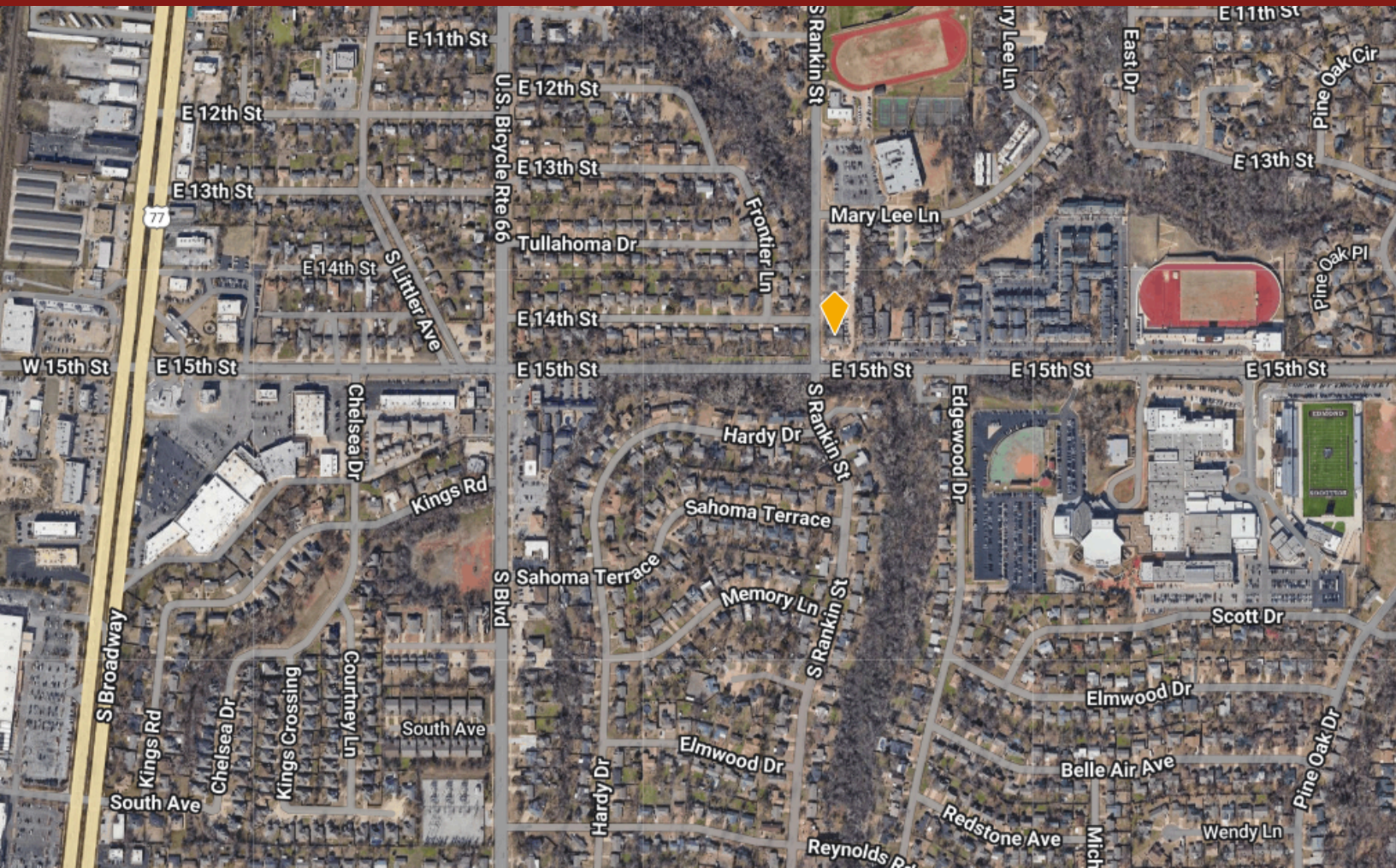
Heather Rainer- Broker Associate Skybridge Real Estate

Office: 405-898-2702 Cell: 405-922-0809

[Heather.Rainer@Skybridgellc.com](mailto:Heather.Rainer@Skybridgellc.com)



# Demographics



	1 mile	3 miles	5 miles
<b>Population</b>	<b>10,249</b>	<b>74,857</b>	<b>139,977</b>
<b>Avg Household Income</b>	<b>\$79,619</b>	<b>\$97,769</b>	<b>\$109,519</b>
<b>Total Households</b>	<b>4,207</b>	<b>28,608</b>	<b>53,111</b>



Heather Rainer- Broker Associate Skybridge Real Estate

Office: 405-898-2702 Cell: 405-922-0809

Heather.Rainer@Skybridgellc.com

No warranty or representation, express or implies, is made as to the accuracy of the information contained herein, and the same is submitted subject to errors, omissions, change of price, rental or other conditions, prior to sale, lease or financing, or withdrawal without notice, and any special listing conditions imposed by our principals no warranties or representations are made as to the condition of the property or any hazards contained therein are any to be implied.