

LAKE NONA®



ONE PERFORMANCE PLAZA

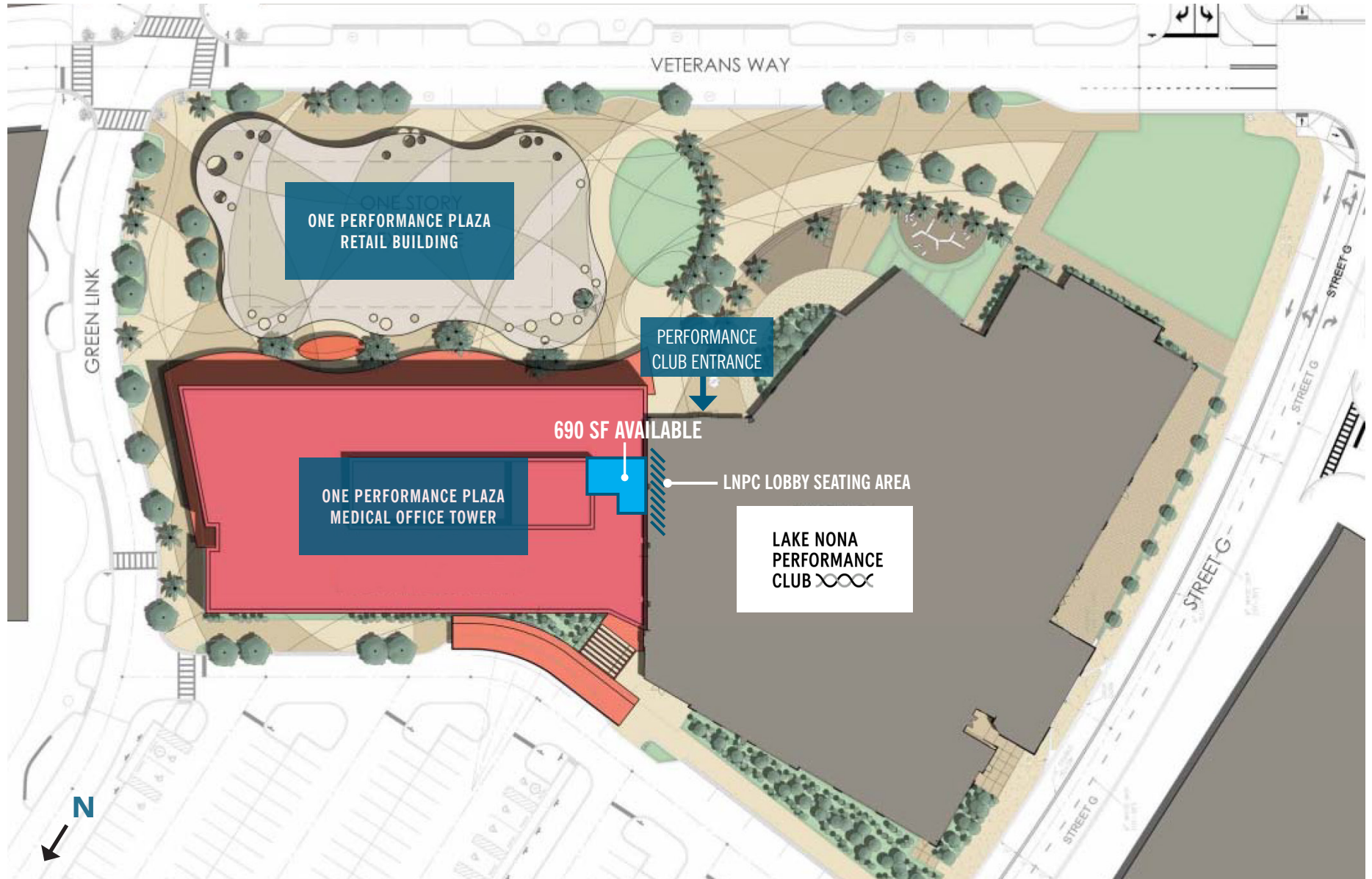
JUICE BAR/SMOOTHIE RETAIL OPPORTUNITY

CURATED RESTAURANT & RETAIL DESTINATION



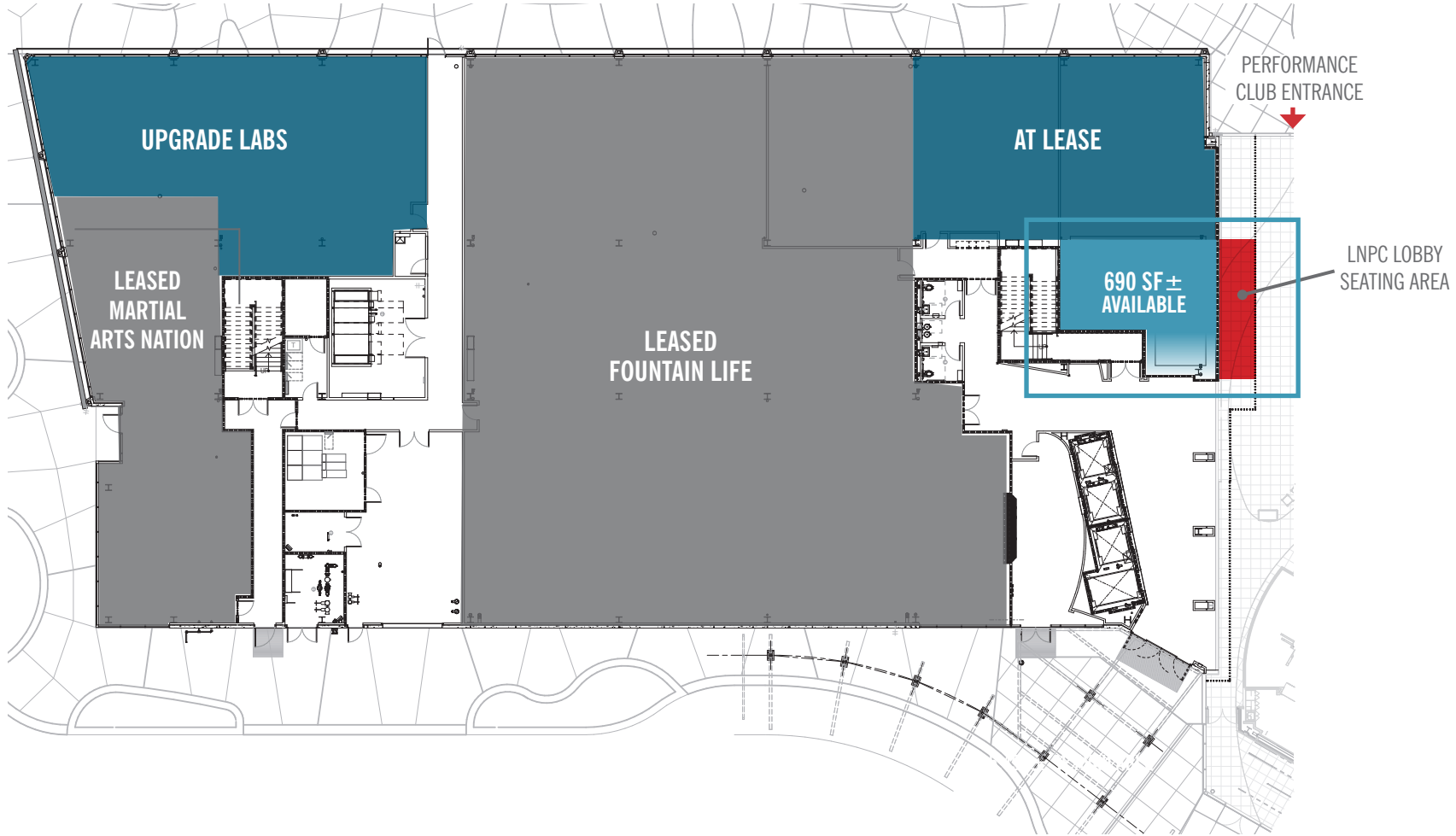
One Performance Plaza will feature 12,000+ SF of carefully curated restaurant and retail tenants that will complement the Plaza's holistic health and wellbeing mission. One Performance Plaza retail is part of the larger Lake Nona Town Center that includes a variety of dining, shopping, entertainment, and hospitality amenities within walking distance. Tenants include The Lake Nona Wave Hotel, Courtyard and Residence Inn by Marriott, Starbucks Coffee, Boxi Park, Chroma Modern Bar + Kitchen, Park Pizza Brewing Company, Bosphorous Turkish Cuisine Restaurant, Veg N'Out, Island Fin Poke Co., P. F. Chang's To Go and more.

RETAIL SITE PLAN



ONE PERFORMANCE PLAZA

TOWER GROUND LEVEL RETAIL



All floor plans are conceptual and spaces can be demised according to tenant needs.

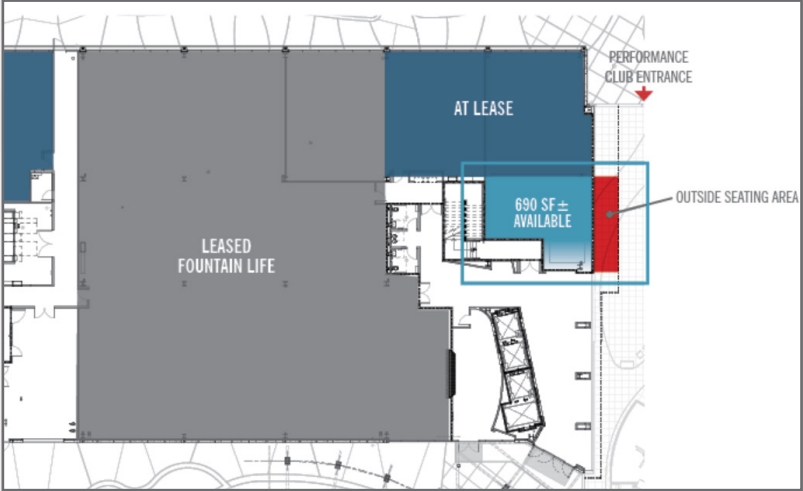
Juice Bar/Smoothie Concept



ONE PERFORMANCE PLAZA

JUICE BAR/SMOOTHIE RETAIL OPPORTUNITY

- Seeking JUICE BAR/SMOOTHIE establishment
- 690 SF Available inside Lake Nona Performance Club (LNPC)
- Open seating area inside LNPC lobby area
- 6-story medical office building with approximately 150,000 SF of office space
- LNPC is 127,000 sf medically integrated fitness facility





Joanne Ling

*Sr. Director Commercial Sales,
Leasing & Development*

P: 407.313.1946

C: 407.620.6494

E: JLing@Tavistock.com

LAKE NONA



LAKENONA.COM