

**FOR LEASE**



## PROPERTY DETAILS

520 N. Marketplace Dr., Centerville, UT 84014

*Lease Rate: \$28.00/SF/Year Full Service*

- 2,598 SF available on the first floor
- LEED Silver
- Mens/womens lockers and shower area
- Multiple fiber providers
- 4/1,000 parking ratio
- Covered parking on-site
- Unprecedented I-15 access
- 15 minutes to Downtown Salt Lake City and Salt Lake City International Airport



**NEWMARK**



**MOUNTAIN WEST**

**CHRIS FALK, CCIM, SIOR**

cfalk@newmarkmw.com

direct 801.499.6514

[View Profile](#)

**BRAXTON WILLIE, CCIM**

bwillie@newmarkmw.com

direct 801.803.3334

[View Profile](#)

**FULL SERVICE**

**COMMERCIAL REAL ESTATE**

1410 S University Park Blvd, Ste 120

Clearfield, Utah 84015

Office 801.578.5580

[www.newmarkmw.com](http://www.newmarkmw.com)

# NEWMARK

 **MOUNTAIN WEST**

**CHRIS FALK, CCIM, SIOR**  
cfalk@newmarkmw.com  
direct 801.499.6514  
[View Profile](#)

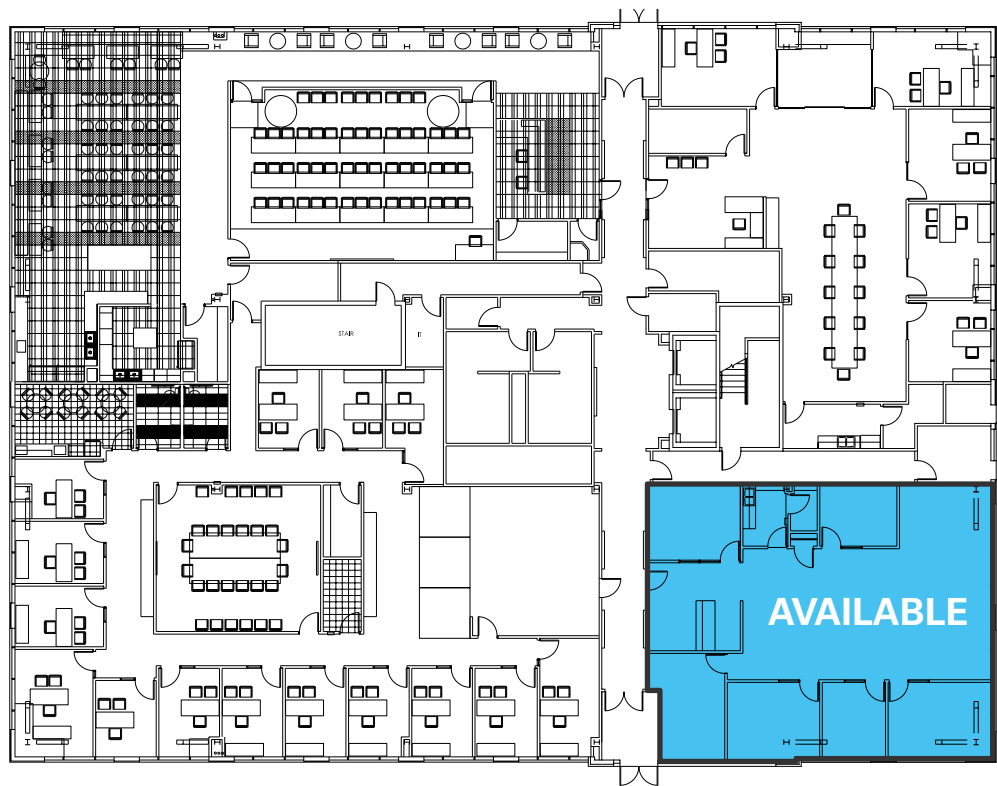
**BRAXTON WILLIE, CCIM**  
bwillie@newmarkmw.com  
direct 801.803.3334  
[View Profile](#)



**FULL SERVICE  
COMMERCIAL REAL ESTATE**  
1410 S University Park Blvd, Ste 120  
Clearfield, Utah 84015  
Office 801.578.5580  
[www.newmarkmw.com](http://www.newmarkmw.com)



## FIRST FLOOR



**CHRIS FALK, CCIM, SIOR**  
[cfalk@newmarkmw.com](mailto:cfalk@newmarkmw.com)  
 direct 801.499.6514  
[View Profile](#)

**BRAXTON WILLIE, CCIM**  
[bwillie@newmarkmw.com](mailto:bwillie@newmarkmw.com)  
 direct 801.803.3334  
[View Profile](#)

**FULL SERVICE  
 COMMERCIAL REAL ESTATE**  
 1410 S University Park Blvd, Ste 120  
 Clearfield, Utah 84015  
 Office 801.578.5580  
[www.newmarkmw.com](http://www.newmarkmw.com)





**CHRIS FALK, CCIM, SIOR**  
 cfalk@newmarkmw.com  
 direct 801.499.6514  
[View Profile](#)

**BRAXTON WILLIE, CCIM**  
 bwillie@newmarkmw.com  
 direct 801.803.3334  
[View Profile](#)

**FULL SERVICE  
 COMMERCIAL REAL ESTATE**  
 1410 S University Park Blvd, Ste 120  
 Clearfield, Utah 84015  
 Office 801.578.5580  
[www.newmarkmw.com](http://www.newmarkmw.com)