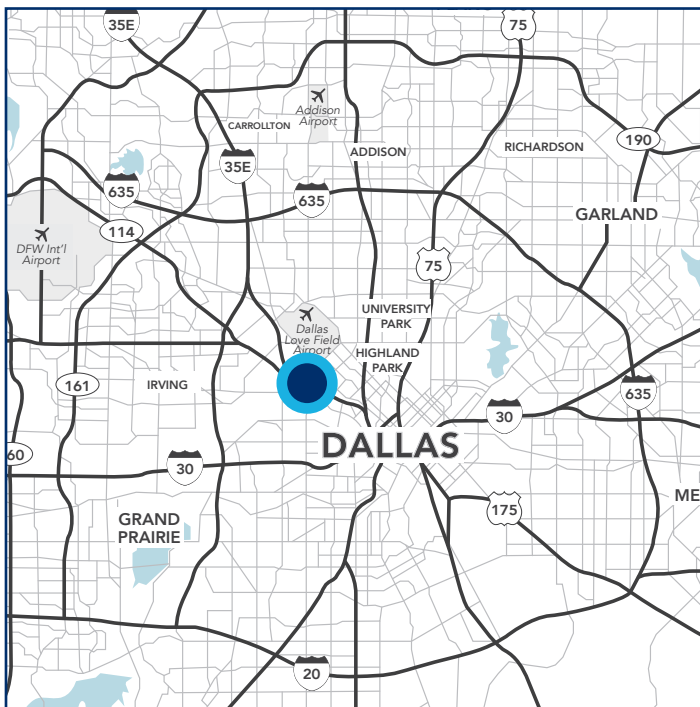


39,018 SF AVAILABLE FOR LEASE OR SALE
2998-3010 N STEMMONS FWY
DALLAS, TEXAS 75247



*Price
Reduction*



PROPERTY HIGHLIGHTS

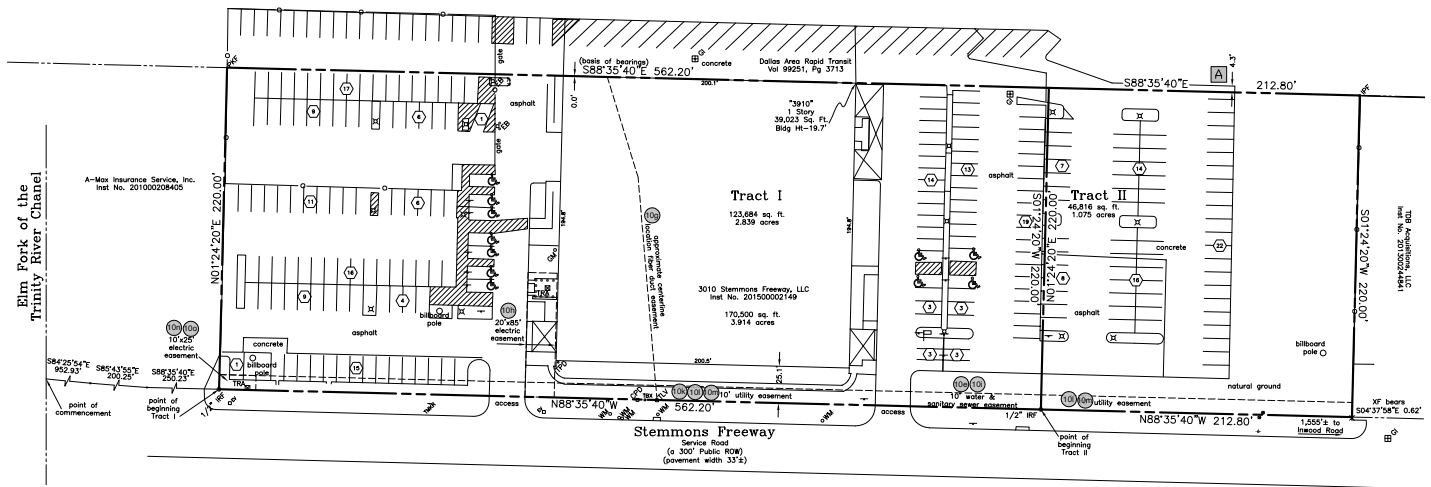
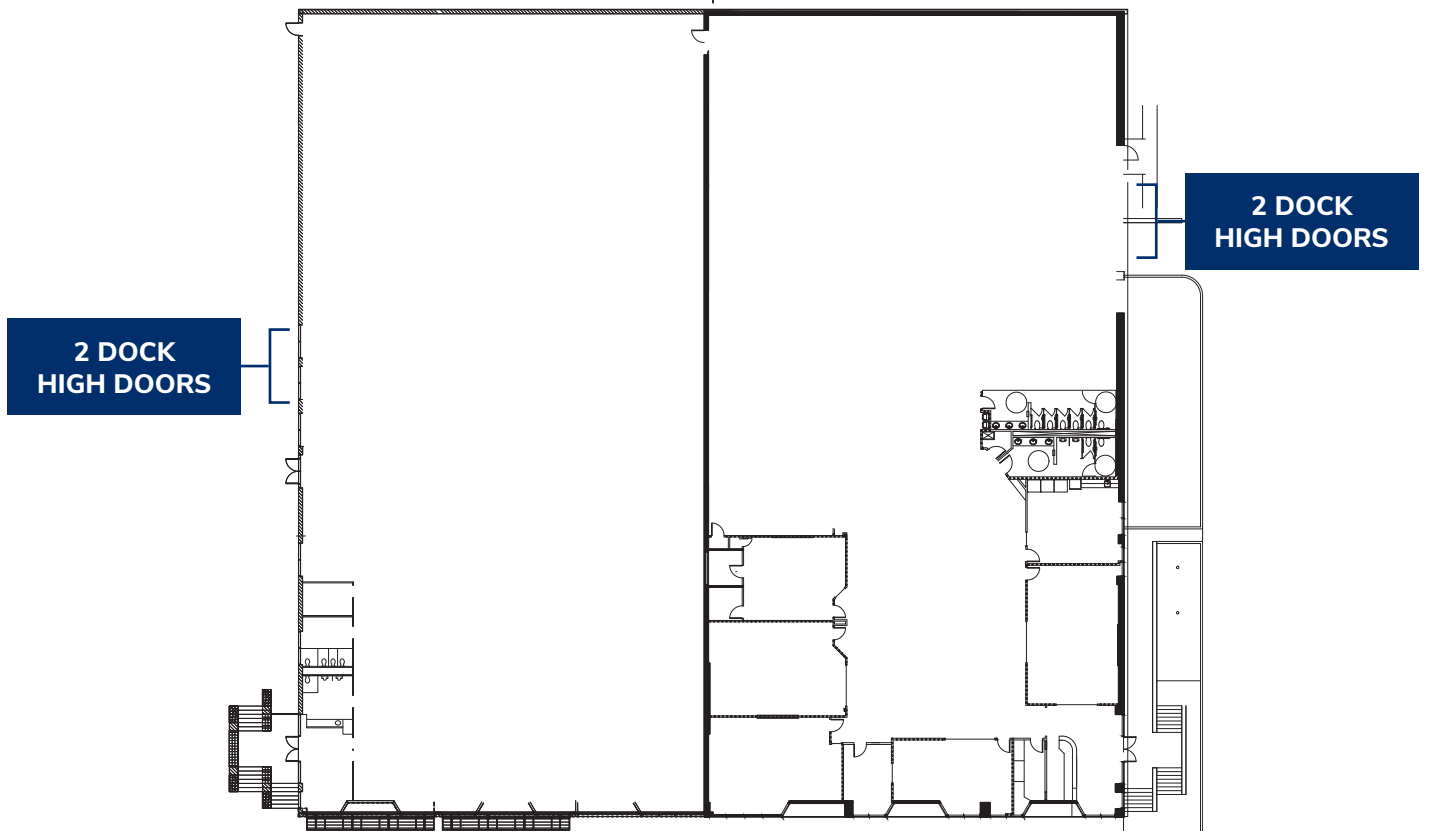
- Office/Showroom/Warehouse
- 39,018 SF of Building
- 2 Pylon Signs Available
- Abundant Parking (276 Parking Spaces)
- Situated on 3.91 Acres
- Dallas Love Field - 11 Minute Drive Time
- DFW Airport - 21 Minute Drive Time
- Strategic Location Near the Medical District and Design District
- 14' Clear Height
- 4 Dock High Doors
- Fully Sprinklered
- 100% HVAC

GIOVANNI SCARDINO
847.612.8488
giovanni.scardino@streamrealty.com

JASON MOSER
214.244.6144
jmoser@streamrealty.com

STREAM

39,018 SF AVAILABLE FOR LEASE OR SALE
2998-3010 N STEMMONS FWY
 DALLAS, TEXAS 75247



GIOVANNI SCARDINO
 847.612.8488
 giovanni.scardino@streamrealty.com

JASON MOSER
 214.244.6144
 jmoser@streamrealty.com

