

327 Spokane Avenue
Whitefish, MT 59937
MLS #30027453

Versatile Commercial Opportunity



327 Spokane Avenue

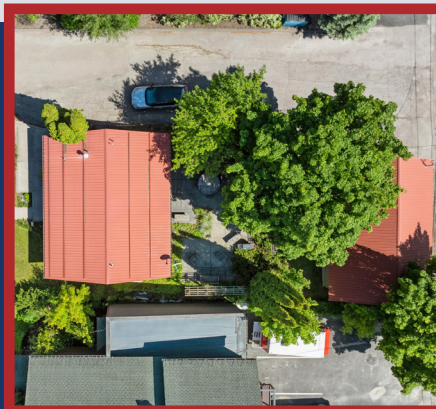
OFFERED AT
\$2,490,000

Prime Location With Flexible Zoning & Development Potential

This downtown Whitefish commercial property, situated on Spokane Avenue, the town's main thoroughfare, boasts a WB-3 zoning with flexible permitted uses and ample design guidelines. Approved for short-term rentals and multi-family development, accommodating 1 to 4 units, it features a 1,536-square-foot building on a .22-acre lot. Previously a law office, it suits retail, office spaces, restaurants, cafes, or mixed-use ventures. Its proximity to the bustling downtown ensures high foot traffic and optimal visibility in Whitefish.

SPECIAL FEATURES

- Commercial Building
- 0.22 Acres | 9,582 Sqft
- Short-term Rental Friendly
- Excellent Visibility, Traffic
- Centrally Located
- Zone WB-3 & Versatile



Sharon Kahle Bill Kahle

BROKER REALTOR®

406.270.9468 406.270.9467

sharonkahle4@gmail.com billkahlemt@gmail.com



RE/MAX
WHITEFISH

509 E 6th ST.
Whitefish, MT 59937

406.863.3400
remax-whitefish-mt.com