

10201 W 75TH STREET OVERLAND PARK, KS

AREA
REAL ESTATE ADVISORS



PROPERTY HIGHLIGHTS:

FORMER STARBUCKS DRIVE-THRU (TENANT VACATING 11/30/24)

0.46 ACRES AVAILABLE FOR LEASE OR PURCHASE

BUILT IN 2014

EXCELLENT VISIBILITY WITH 33,538 CPD ON 75TH STREET

IMMEDIATE ACCESS TO I-35

CLOSE PROXIMITY TO ADVENTHEALTH HOSPITAL/MEDICAL OFFICE PARK

MORE INFORMATION:

FINNIAN O'DOHERTY

D 816.876.2532

E FODOHERTY@OPENAREA.COM

MATT VAUPELL

D 816.876.2501

E MVAUPELL@OPENAREA.COM

AREA REAL ESTATE ADVISORS

A 4800 MAIN ST, SUITE 400 • KANSAS CITY, MO 64112

P 816.895.4800 **W** OPENAREA.COM

The information used to create this brochure was gathered from sources deemed reliable. Though we do not doubt its accuracy, we do not guarantee or warranty it. You and your advisors should conduct a careful independent investigation of the information to determine your satisfaction and suitability.

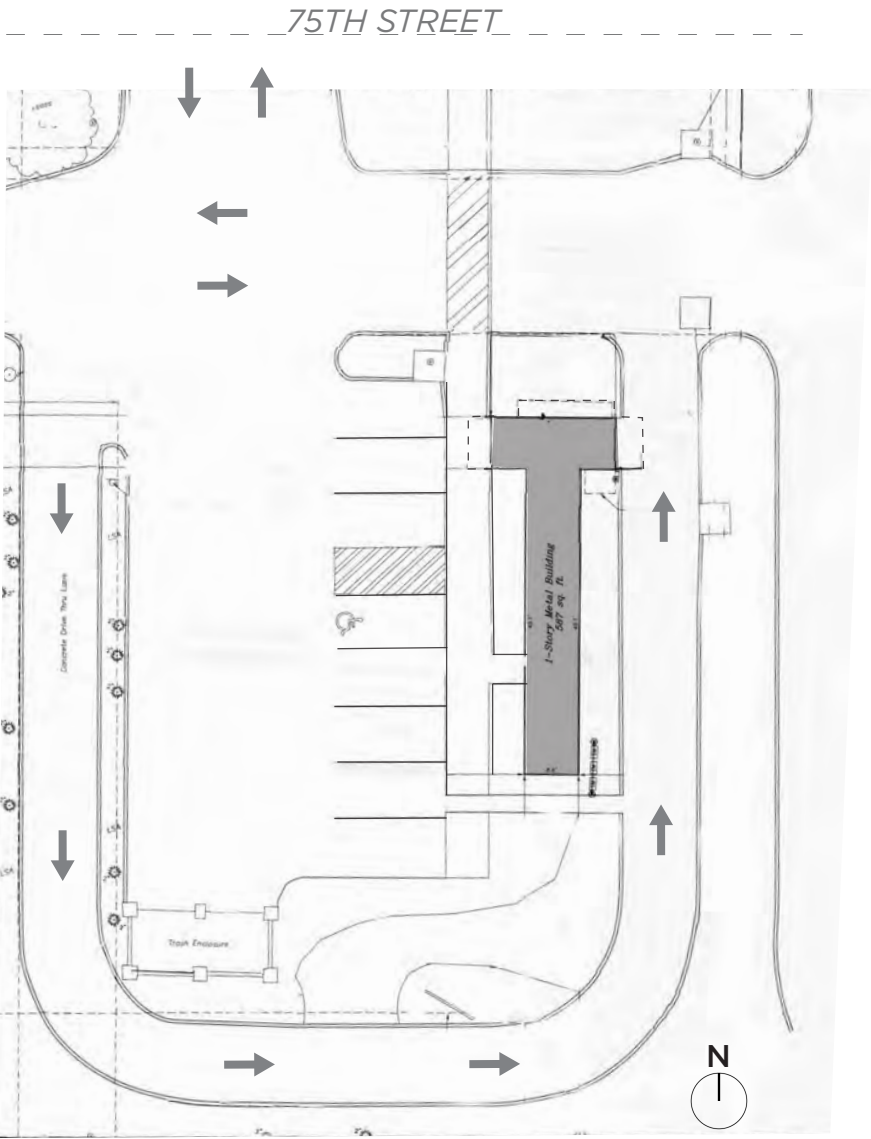


AREA REAL ESTATE ADVISORS

A 4800 MAIN ST, SUITE 400 • KANSAS CITY, MO 64112
P 816.895.4800 **W** OPENAREA.COM

The information used to create this brochure was gathered from sources deemed reliable. Though we do not doubt its accuracy, we do not guarantee or warranty it. You and your advisors should conduct a careful independent investigation of the information to determine your satisfaction and suitability.

SITE PLAN:



AREA REAL ESTATE ADVISORS

A 4800 MAIN ST, SUITE 400 • KANSAS CITY, MO 64112
P 816.895.4800 W OPENAREA.COM

The information used to create this brochure was gathered from sources deemed reliable. Though we do not doubt its accuracy, we do not guarantee or warranty it. You and your advisors should conduct a careful independent investigation of the information to determine your satisfaction and suitability.

Full Profile

2010-2020 Census, 2024 Estimates with 2029 Projections
 Calculated using Weighted Block Centroid from Block Groups



Lat/Lon: 38.9927/-94.7037

10201 W 75th St Overland Park, KS 66204		1 mi radius	3 mi radius	5 mi radius
Population				
2024 Estimated Population		14,489	104,877	241,044
2029 Projected Population		14,946	106,441	245,242
2020 Census Population		13,111	102,085	233,786
2010 Census Population		13,070	99,737	225,410
Projected Annual Growth 2024 to 2029		0.6%	0.3%	0.3%
Historical Annual Growth 2010 to 2024		0.8%	0.4%	0.5%
Households				
2024 Estimated Households		6,958	47,458	108,186
2029 Projected Households		7,225	48,696	111,265
2020 Census Households		6,197	45,381	102,815
2010 Census Households		6,044	43,462	97,916
Projected Annual Growth 2024 to 2029		0.8%	0.5%	0.6%
Historical Annual Growth 2010 to 2024		1.1%	0.7%	0.7%
Age				
2024 Est. Population Under 10 Years		13.4%	13.1%	13.1%
2024 Est. Population 10 to 19 Years		10.3%	11.6%	12.1%
2024 Est. Population 20 to 29 Years		20.5%	14.8%	13.9%
2024 Est. Population 30 to 44 Years		22.6%	21.4%	20.8%
2024 Est. Population 45 to 59 Years		14.8%	15.5%	15.6%
2024 Est. Population 60 to 74 Years		12.4%	16.1%	16.5%
2024 Est. Population 75 Years or Over		6.0%	7.4%	8.0%
2024 Est. Median Age		32.9	36.5	37.2
Marital Status & Gender				
2024 Est. Male Population		49.4%	49.2%	49.0%
2024 Est. Female Population		50.6%	50.8%	51.0%
2024 Est. Never Married		45.0%	35.0%	31.6%
2024 Est. Now Married		35.0%	46.4%	50.1%
2024 Est. Separated or Divorced		17.1%	14.4%	13.6%
2024 Est. Widowed		2.9%	4.2%	4.8%
Income				
2024 Est. HH Income \$200,000 or More		4.4%	8.9%	12.8%
2024 Est. HH Income \$150,000 to \$199,999		7.0%	9.5%	10.3%
2024 Est. HH Income \$100,000 to \$149,999		14.6%	20.3%	20.0%
2024 Est. HH Income \$75,000 to \$99,999		11.8%	15.3%	14.7%
2024 Est. HH Income \$50,000 to \$74,999		25.5%	20.4%	17.3%
2024 Est. HH Income \$35,000 to \$49,999		12.8%	9.3%	8.5%
2024 Est. HH Income \$25,000 to \$34,999		8.5%	6.0%	5.9%
2024 Est. HH Income \$15,000 to \$24,999		7.8%	5.1%	4.6%
2024 Est. HH Income Under \$15,000		7.7%	5.3%	5.8%
2024 Est. Average Household Income		\$74,043	\$102,789	\$123,313
2024 Est. Median Household Income		\$62,697	\$85,697	\$95,877
2024 Est. Per Capita Income		\$35,673	\$46,638	\$55,462
2024 Est. Total Businesses		539	4,559	10,890
2024 Est. Total Employees		8,012	56,022	161,789

Full Profile

2010-2020 Census, 2024 Estimates with 2029 Projections
 Calculated using Weighted Block Centroid from Block Groups



Lat/Lon: 38.9927/-94.7037

10201 W 75th St Overland Park, KS 66204		1 mi radius	3 mi radius	5 mi radius
Race				
2024 Est. White		78.7%	80.3%	78.9%
2024 Est. Black		7.2%	5.8%	6.4%
2024 Est. Asian or Pacific Islander		5.1%	5.5%	5.4%
2024 Est. American Indian or Alaska Native		0.2%	0.3%	0.3%
2024 Est. Other Races		8.7%	8.1%	9.0%
Hispanic				
2024 Est. Hispanic Population		1,192	8,443	22,348
2024 Est. Hispanic Population		8.2%	8.1%	9.3%
2029 Proj. Hispanic Population		8.8%	8.6%	9.8%
2020 Hispanic Population		23.1%	14.0%	12.1%
Education (Adults 25 & Older)				
2024 Est. Adult Population (25 Years or Over)		9,761	72,555	166,407
2024 Est. Elementary (Grade Level 0 to 8)		5.5%	2.3%	1.7%
2024 Est. Some High School (Grade Level 9 to 11)		5.0%	2.8%	2.1%
2024 Est. High School Graduate		19.1%	18.0%	16.2%
2024 Est. Some College		20.1%	20.5%	19.0%
2024 Est. Associate Degree Only		10.4%	9.2%	8.2%
2024 Est. Bachelor Degree Only		27.4%	30.4%	32.6%
2024 Est. Graduate Degree		12.5%	16.8%	20.3%
Housing				
2024 Est. Total Housing Units		7,283	49,636	113,379
2024 Est. Owner-Occupied		30.1%	53.8%	57.6%
2024 Est. Renter-Occupied		65.4%	41.8%	37.8%
2024 Est. Vacant Housing		4.5%	4.4%	4.6%
Homes Built by Year				
2024 Homes Built 2010 or later		9.5%	9.2%	9.8%
2024 Homes Built 2000 to 2009		10.7%	8.3%	8.9%
2024 Homes Built 1990 to 1999		9.6%	7.9%	8.6%
2024 Homes Built 1980 to 1989		12.8%	12.4%	13.3%
2024 Homes Built 1970 to 1979		20.3%	19.5%	18.1%
2024 Homes Built 1960 to 1969		20.0%	17.1%	14.8%
2024 Homes Built 1950 to 1959		9.7%	15.4%	15.4%
2024 Homes Built Before 1949		2.8%	5.7%	6.6%
Home Values				
2024 Home Value \$1,000,000 or More		1.3%	1.3%	2.6%
2024 Home Value \$500,000 to \$999,999		8.3%	8.8%	13.5%
2024 Home Value \$400,000 to \$499,999		7.4%	10.0%	12.2%
2024 Home Value \$300,000 to \$399,999		22.5%	27.5%	28.2%
2024 Home Value \$200,000 to \$299,999		44.2%	38.8%	30.6%
2024 Home Value \$150,000 to \$199,999		9.2%	8.2%	6.8%
2024 Home Value \$100,000 to \$149,999		3.1%	2.9%	3.0%
2024 Home Value \$50,000 to \$99,999		1.3%	0.5%	0.9%
2024 Home Value \$25,000 to \$49,999		1.5%	1.0%	1.1%
2024 Home Value Under \$25,000		1.3%	1.0%	1.1%
2024 Median Home Value		\$270,648	\$295,568	\$341,218
2024 Median Rent		\$1,042	\$1,108	\$1,121

©2024, Sites USA, Chandler, Arizona, 480-491-1112 Demographic Source: Applied Geographic Solutions 5/2024, TIGER Geography - RF1

This report was produced using data from private and government sources deemed to be reliable. The information herein is provided without representation or warranty.

Full Profile

2010-2020 Census, 2024 Estimates with 2029 Projections
 Calculated using Weighted Block Centroid from Block Groups



Lat/Lon: 38.9927/-94.7037

10201 W 75th St Overland Park, KS 66204	1 mi radius	3 mi radius	5 mi radius
Labor Force			
2024 Est. Labor Population Age 16 Years or Over	11,618	83,400	191,007
2024 Est. Civilian Employed	71.1%	68.2%	66.6%
2024 Est. Civilian Unemployed	3.9%	2.0%	1.7%
2024 Est. in Armed Forces	0.2%	-	0.1%
2024 Est. not in Labor Force	24.8%	29.7%	31.6%
2024 Labor Force Males	49.3%	48.8%	48.6%
2024 Labor Force Females	50.7%	51.2%	51.4%
Occupation			
2024 Occupation: Population Age 16 Years or Over	8,258	56,912	127,130
2024 Mgmt, Business, & Financial Operations	17.0%	21.2%	22.6%
2024 Professional, Related	27.8%	30.8%	31.5%
2024 Service	14.8%	12.0%	11.3%
2024 Sales, Office	21.6%	21.6%	21.3%
2024 Farming, Fishing, Forestry	-	0.2%	0.1%
2024 Construction, Extraction, Maintenance	6.4%	4.2%	4.0%
2024 Production, Transport, Material Moving	12.3%	9.9%	9.1%
2024 White Collar Workers	66.4%	73.7%	75.4%
2024 Blue Collar Workers	33.6%	26.3%	24.6%
Transportation to Work			
2024 Drive to Work Alone	73.2%	71.1%	70.6%
2024 Drive to Work in Carpool	7.0%	4.8%	4.5%
2024 Travel to Work by Public Transportation	0.3%	0.5%	0.5%
2024 Drive to Work on Motorcycle	-	0.1%	0.1%
2024 Walk or Bicycle to Work	1.4%	1.3%	1.2%
2024 Other Means	2.2%	1.1%	1.1%
2024 Work at Home	15.8%	21.0%	22.0%
Travel Time			
2024 Travel to Work in 14 Minutes or Less	26.6%	29.6%	28.5%
2024 Travel to Work in 15 to 29 Minutes	55.9%	55.8%	55.6%
2024 Travel to Work in 30 to 59 Minutes	16.7%	13.4%	14.4%
2024 Travel to Work in 60 Minutes or More	0.7%	1.2%	1.5%
2024 Average Travel Time to Work	18.8	18.2	18.5
Consumer Expenditure			
2024 Est. Total Household Expenditure	\$396.7 M	\$3.4 B	\$8.84 B
2024 Est. Apparel	\$13.93 M	\$120.09 M	\$314.32 M
2024 Est. Contributions, Gifts	\$22.09 M	\$199.74 M	\$538.36 M
2024 Est. Education, Reading	\$12.18 M	\$111.92 M	\$307 M
2024 Est. Entertainment	\$22.08 M	\$194.21 M	\$509.71 M
2024 Est. Food, Beverages, Tobacco	\$61.38 M	\$516.79 M	\$1.33 B
2024 Est. Furnishings, Equipment	\$13.77 M	\$120.72 M	\$315.91 M
2024 Est. Health Care, Insurance	\$36.14 M	\$309.03 M	\$795.83 M
2024 Est. Household Operations, Shelter, Utilities	\$129.92 M	\$1.1 B	\$2.84 B
2024 Est. Miscellaneous Expenses	\$7.49 M	\$64.74 M	\$168.76 M
2024 Est. Personal Care	\$5.33 M	\$45.73 M	\$118.71 M
2024 Est. Transportation	\$72.39 M	\$619.06 M	\$1.6 B

©2024, Sites USA, Chandler, Arizona, 480-491-1112 Demographic Source: Applied Geographic Solutions 5/2024, TIGER Geography - RF1

This report was produced using data from private and government sources deemed to be reliable. The information herein is provided without representation or warranty.